

WATER CONTROL COORDINATES			
POINT	NORTHING	EASTING	
WC-1	310,473.54	3,350,719.71	
WC-2	312,838.93	3,352,475.08	
WC-3	311,964.39	3,353,523.42	
WC-4	312,498.73	3,355,097.35	
WC-5	301,636.87	3,356,924.59	
WC-6	297,339.18	3,358,060.82	
WC-7	294,653.96	3,360,099.30	
WC-8	292,013.63	3,357,711.70	
WC-9	292,091.40	3,357,258.76	
WC-10	290,579.46	3,354,887.42	
WC-11	325,119.01	3,375,556.80	
WC-12	324,136.10	3,375,863.70	
WC-13	322,722.41	3,377,253.96	
WC-14	322,456.12	3,378,120.96	

REV.	DATE	DESCRIPTION	BY



OFFICE OF COASTAL PROTECTION & RESTORATION  
**ENGINEERING BRANCH**  
 4501 LAUREL STREET  
 BATON ROUGE, LOUISIANA 70801

DRAWN BY: P&O      DESIGNED BY: P&O

BATON ROUGE, TOPOGRAPHIC, AND MARSH TOPOGRAPHIC SURVEY  
 LOST LAKE MARSH CREATION and  
 HYDROLOGIC RESTORATION PROJECT  
 PRE-CONSTRUCTION SURVEY

STATE PROJECT NUMBER: 2503-10-49 (TE-72)  
 FEDERAL PROJECT NUMBER:

APPROVED BY:

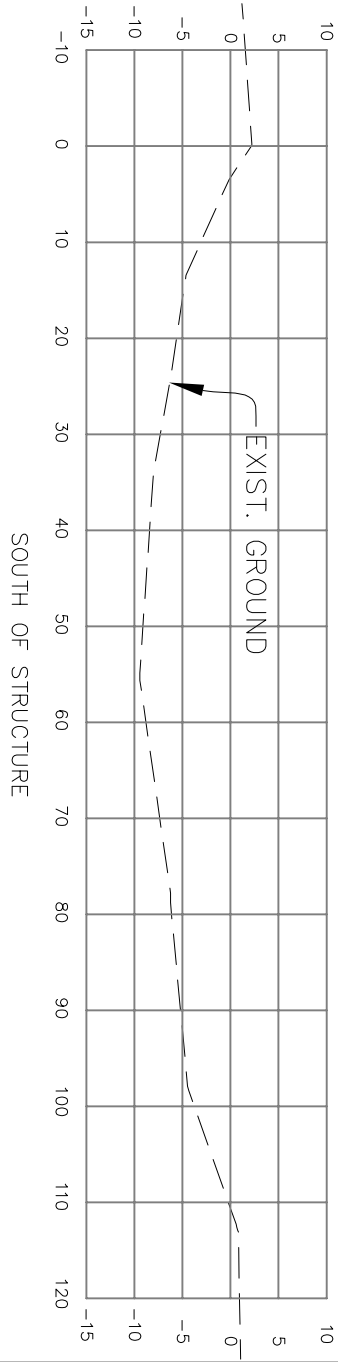
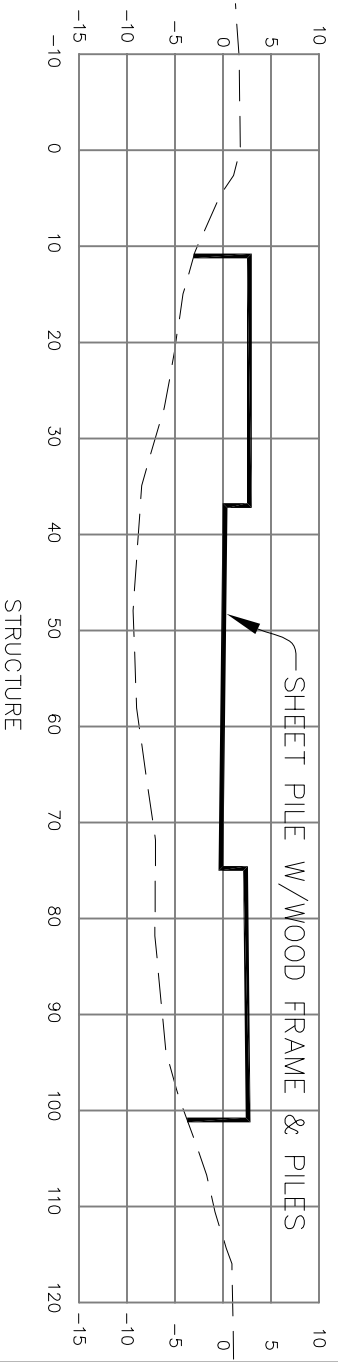
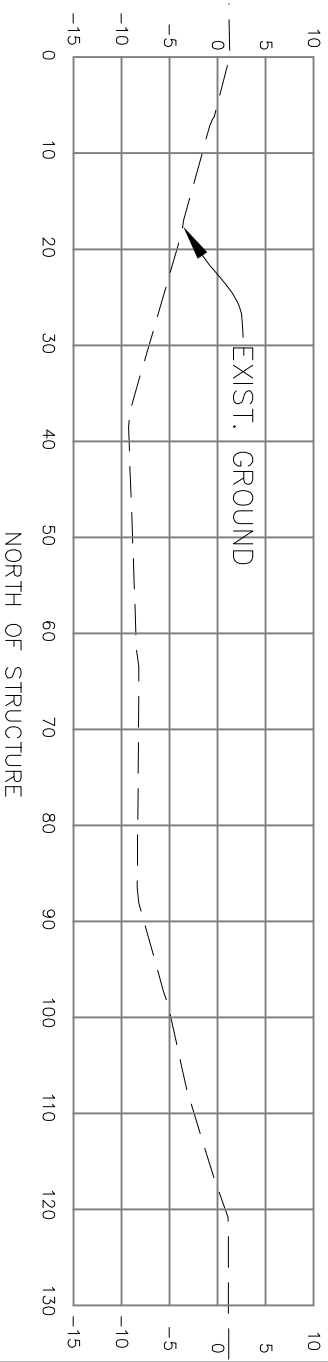
WATER CONTROL STRUCTURES  
 LOCATION  
 PLAN

DATE: MAY, 2011  
 SHEET 54 OF 68



**LEGEND**

- TOP BANK
- WATER'S EDGE
- 4' CONTOURS



**SCALE:**  
 HORIZ: 1" = 20'  
 VERT: 1" = 20'



REV.	DATE	DESCRIPTION	BY



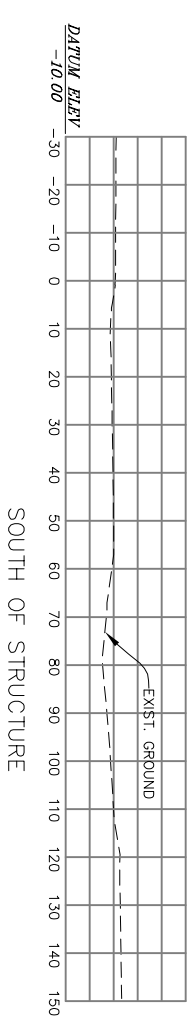
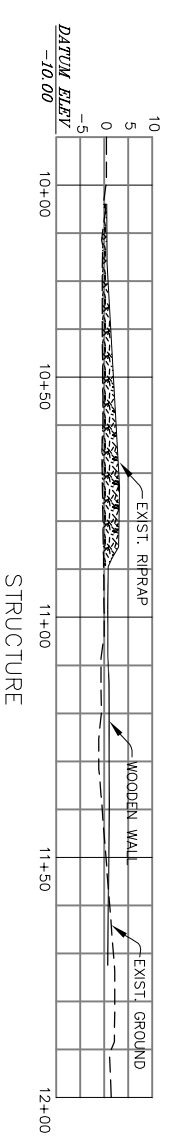
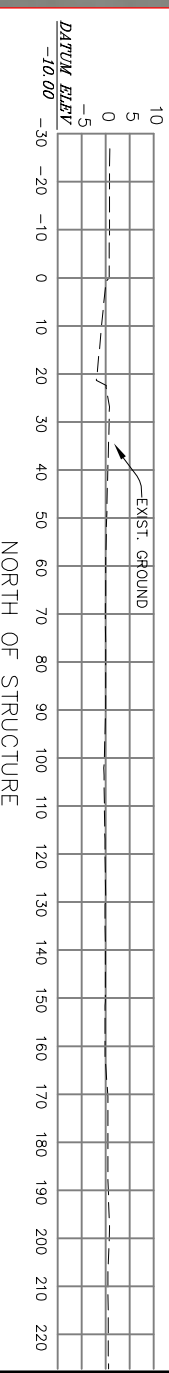
**OFFICE OF COASTAL PROTECTION & RESTORATION  
 ENGINEERING BRANCH**  
 450 LAUREL STREET  
 BATON ROUGE, LOUISIANA 70801

BATHYMETRIC, TOPOGRAPHIC, AND MANGROVE SURVEY  
 LOST LAKE MARSH CREATION and  
 HYDROLOGIC RESTORATION PROJECT  
 PRECONSTRUCTION SURVEY

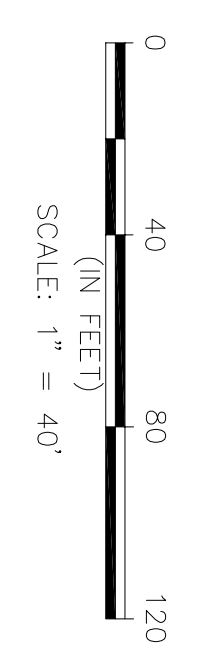
STATE PROJECT NUMBER: 2503-10-49 (TE-72)  
 FEDERAL PROJECT NUMBER:

WATER CONTROL STRUCTURE  
 NUMBER WC-1  
 PLAN AND SECTION

DATE: MAY, 2011  
 SHEET 55 OF 68



SCALE:  
 HORIZ: 1" = 40'  
 VERT: 1" = 40'



SCALE: 1" = 40'

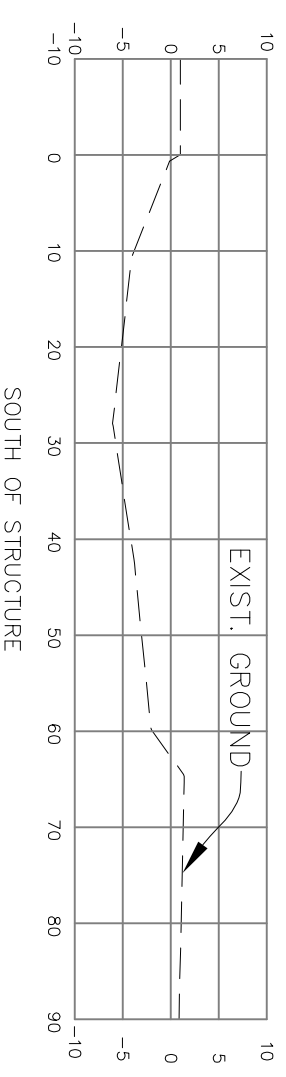
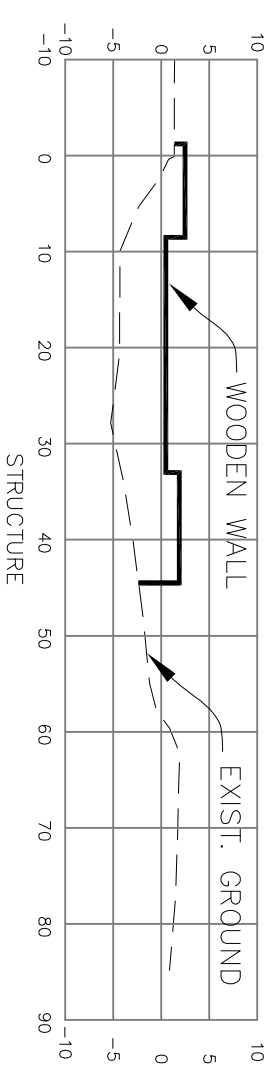
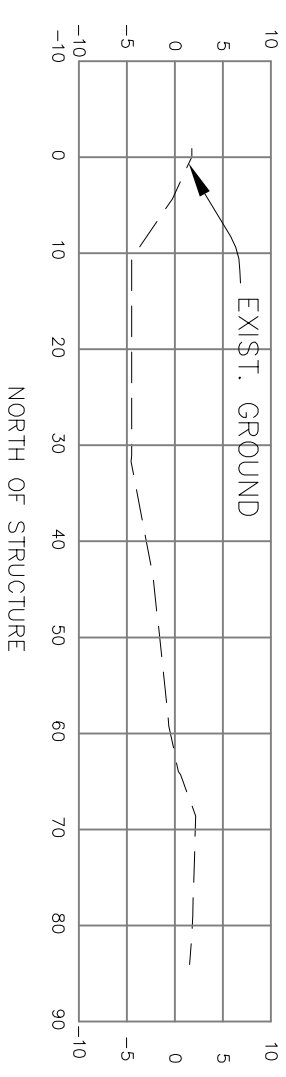
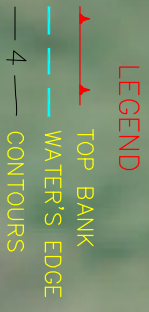
REV.	DATE	DESCRIPTION	BY



OFFICE OF COASTAL PROTECTION & RESTORATION  
**ENGINEERING BRANCH**  
 450 LAUREL STREET  
 BATON ROUGE, LOUISIANA 70801

BATHYMETRIC, TOPOGRAPHIC AND MAGNETOMETRIC SURVEY  
 LOST LAKE MARSH CREATION and  
 HYDROLOGIC RESTORATION PROJECT  
 PRE-CONSTRUCTION SURVEY  
 STATE PROJECT NUMBER: 2503-10-49 (TE-72)  
 FEDERAL PROJECT NUMBER:

WATER CONTROL STRUCTURE  
 NUMBER WC-2  
 PLAN AND SECTION  
 DATE: MAY, 2011  
 SHEET 56 OF 68



SCALE:  
 HORIZ: 1"=20'  
 VERT: 1"=20'

REV.	DATE	DESCRIPTION	BY

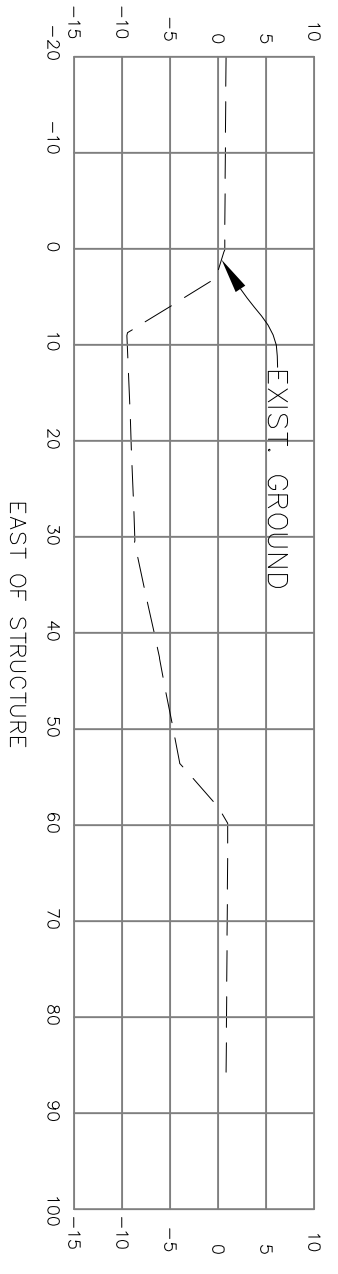
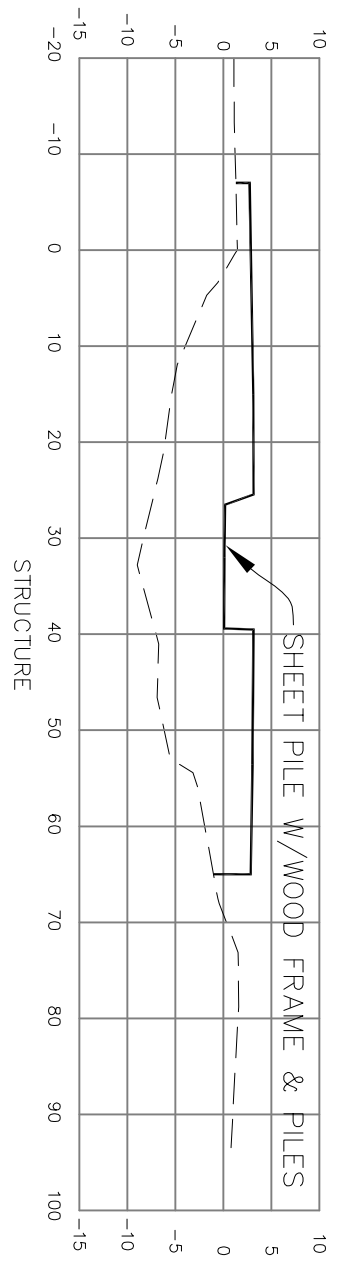
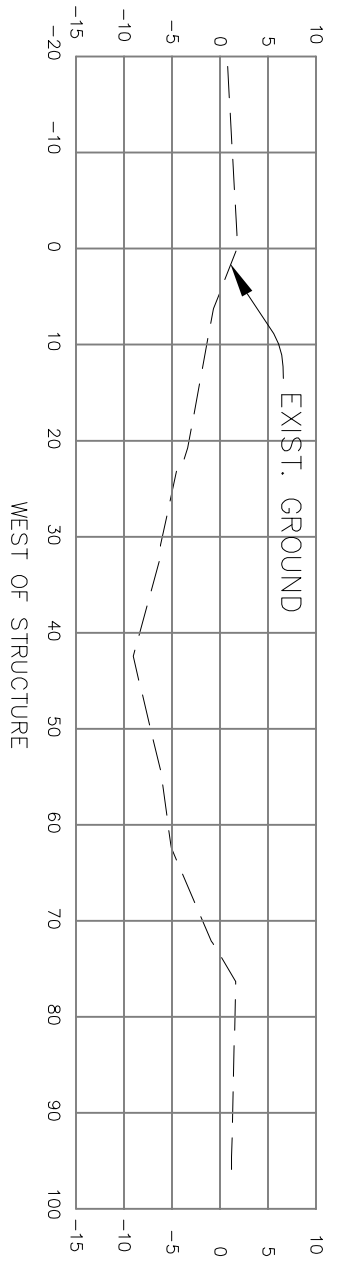
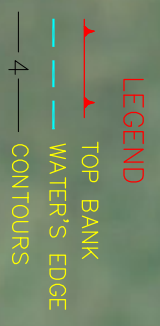
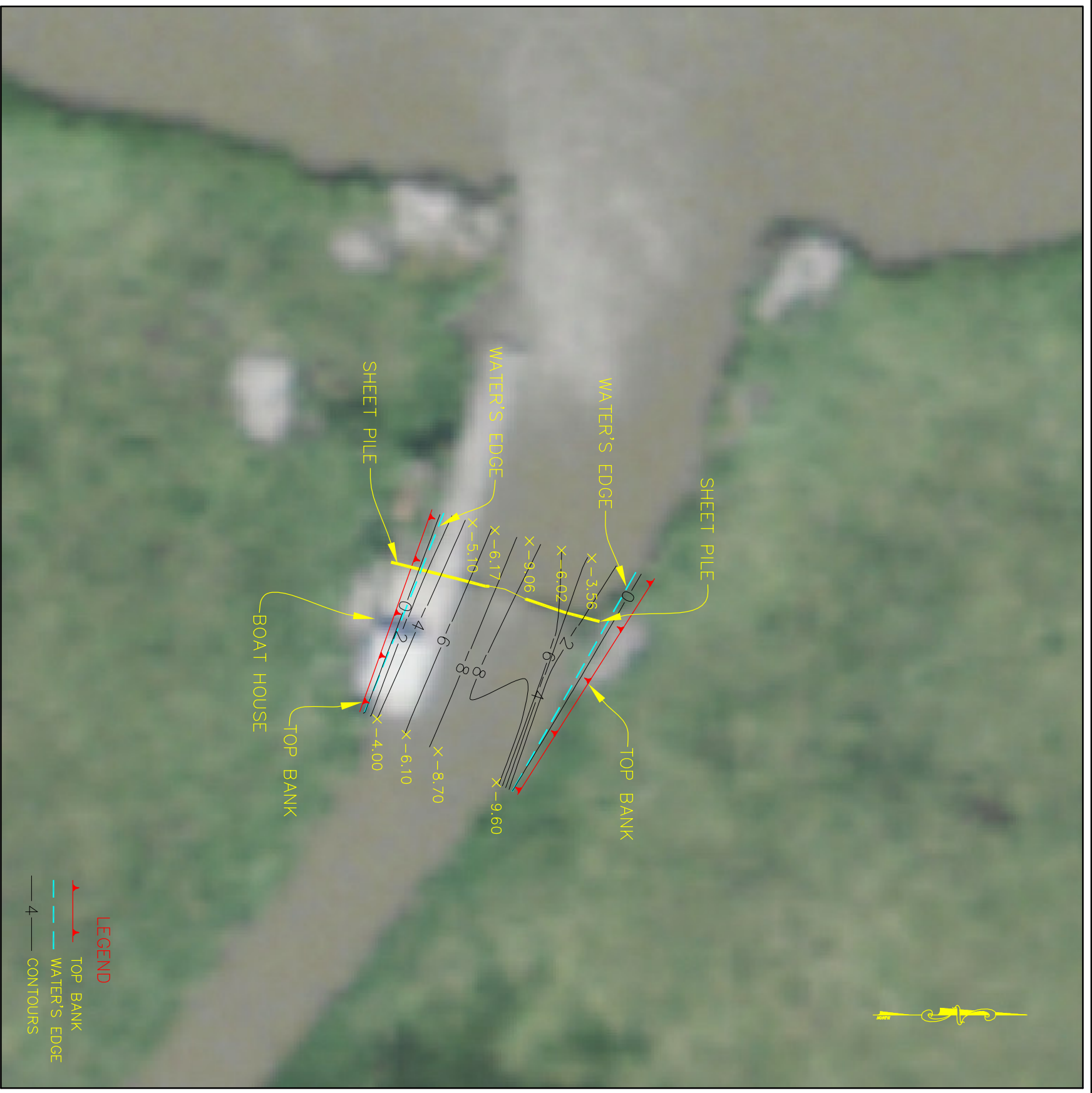
OFFICE OF COASTAL PROTECTION & RESTORATION  
**ENGINEERING BRANCH**  
 450 LAUREL STREET  
 BATON ROUGE, LOUISIANA 70801

BATHYMETRIC, TOPOGRAPHIC AND MANGROVE SURVEY  
 OF  
 LOST LAKE MARSH CREATION and  
 HYDROLOGIC RESTORATION PROJECT  
PRE-CONSTRUCTION SURVEY

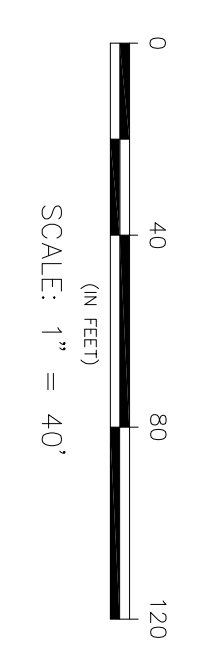
STATE PROJECT NUMBER: 2503-10-49 (TE-72)  
 FEDERAL PROJECT NUMBER:  
 DATE: MAY, 2011  
 SHEET 57 OF 68

DRAWN BY: P&O      DESIGNED BY: P&O      APPROVED BY:

WATER CONTROL STRUCTURE  
 NUMBER WC-3  
 PLAN AND SECTION



SCALE:  
HORIZ: 1"=20'  
VERT: 1"=20'



REV.	DATE	DESCRIPTION	BY

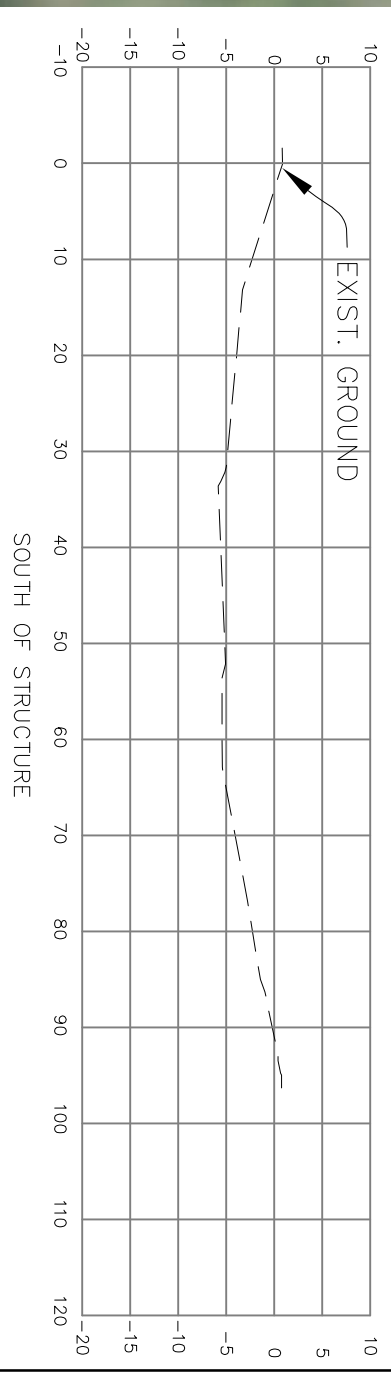
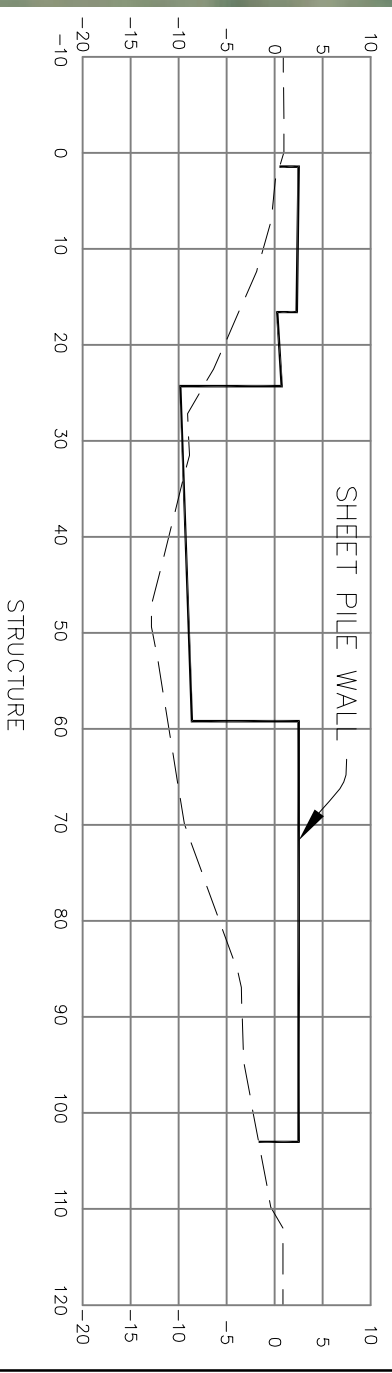
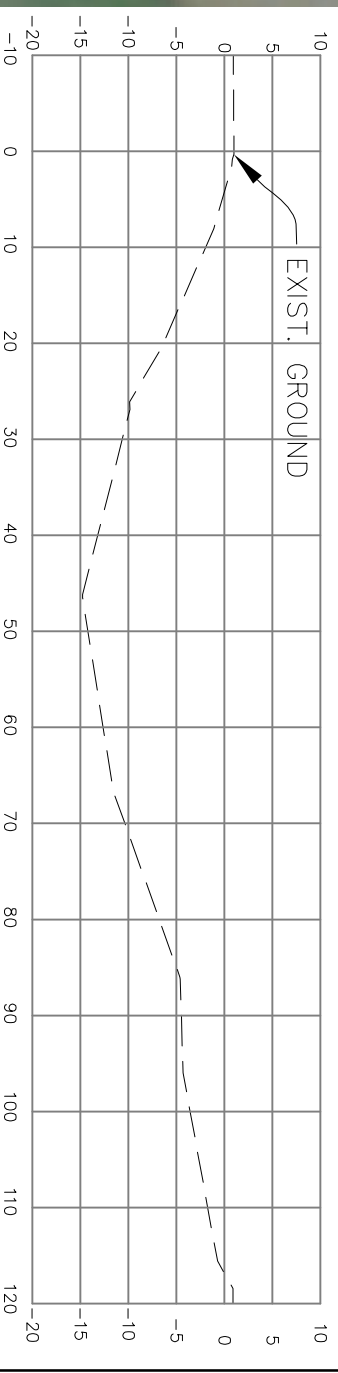
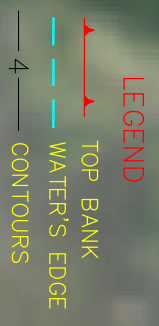
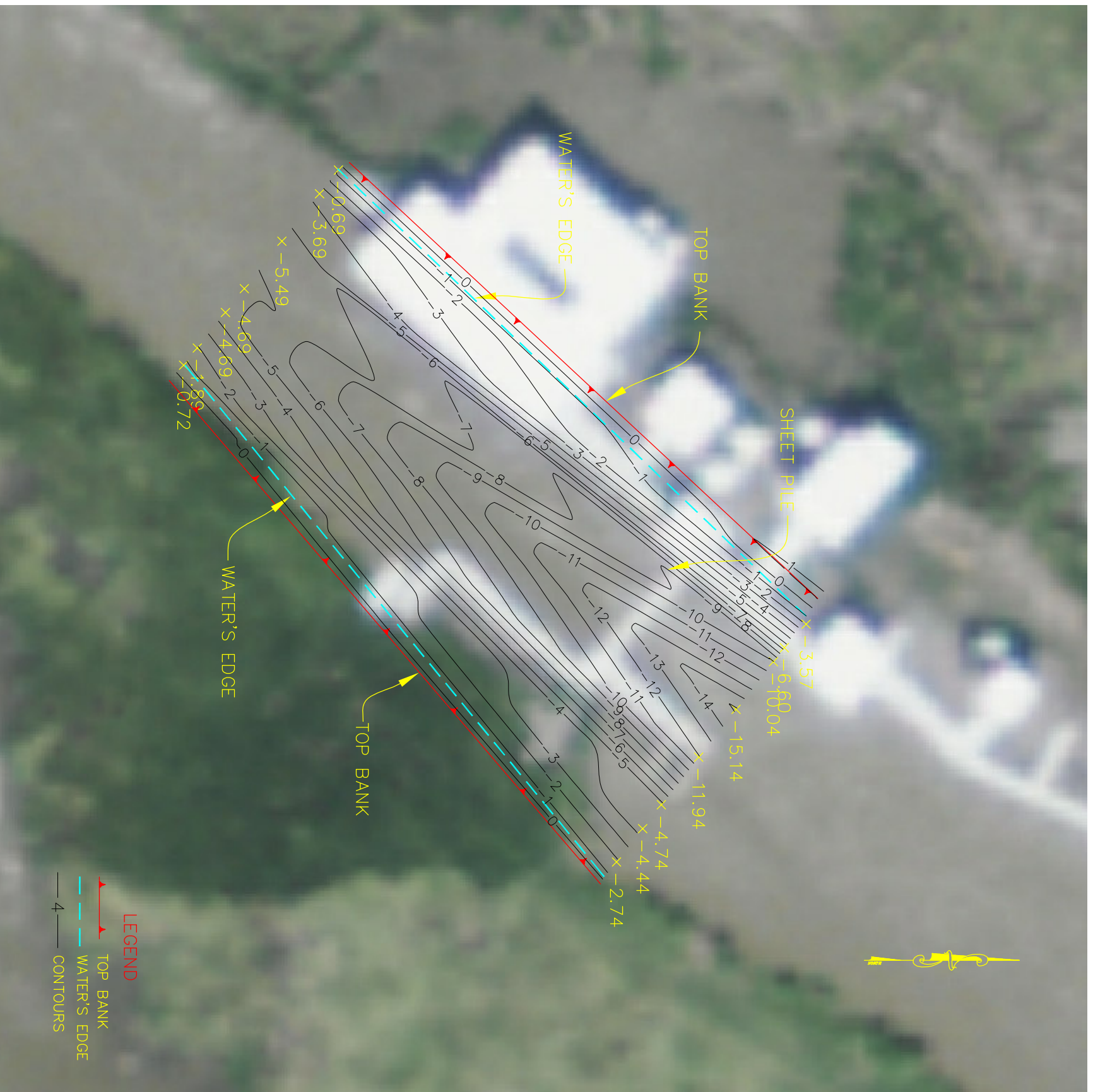


OFFICE OF COASTAL PROTECTION & RESTORATION  
**ENGINEERING BRANCH**  
 450 LAUREL STREET  
 BATON ROUGE, LOUISIANA 70801

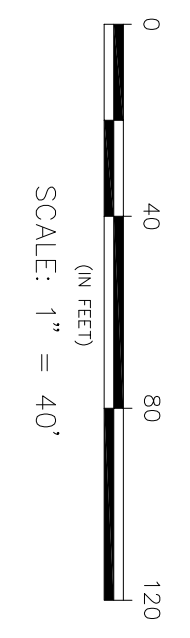
BATHYMETRIC, TOPOGRAPHIC, AND WADGETON/OTHER SURVEY  
 LOST LAKE MARSH CREATION and  
 HYDROLOGIC RESTORATION PROJECT  
PRE-CONSTRUCTION SURVEY  
 STATE PROJECT NUMBER: 2503-10-49 (TE-72)  
 FEDERAL PROJECT NUMBER:

WATER CONTROL STRUCTURE  
 NUMBER WC-4  
 PLAN AND SECTION  
 DATE: MAY, 2011  
 SHEET 58 OF 68

DRAWN BY: P&O      DESIGNED BY: P&O      APPROVED BY:



**SCALE:**  
 HORIZ: 1"=40'  
 VERT: 1"=5'



SCALE: 1" = 40'

REV.	DATE	DESCRIPTION	BY

**PYBURN & ODOM MCA**  
 Engineering & Related Services Since 1948

OFFICE OF COASTAL PROTECTION & RESTORATION  
**ENGINEERING BRANCH**  
 450 LAUREL STREET  
 BATON ROUGE, LOUISIANA 70801

DRAWN BY: P&O      DESIGNED BY: P&O

BATON ROUGE, TOPOGRAPHIC AND MAGNETOMETER SURVEY  
 OF  
 LOST LAKE MARSH CREATION and  
 HYDROLOGIC RESTORATION PROJECT  
PRE-CONSTRUCTION SURVEY

STATE PROJECT NUMBER: 2503-10-49 (TE-72)  
 FEDERAL PROJECT NUMBER:

WATER CONTROL STRUCTURE  
 NUMBER WC-5  
 PLAN AND SECTION

DATE: MAY, 2011  
 SHEET 59 OF 68

APPROVED BY:



SCALE: 1" = 40'

REV.	DATE	DESCRIPTION	BY



**OFFICE OF COASTAL PROTECTION & RESTORATION  
ENGINEERING BRANCH**  
450 LAUREL STREET  
BATON ROUGE, LOUISIANA 70801

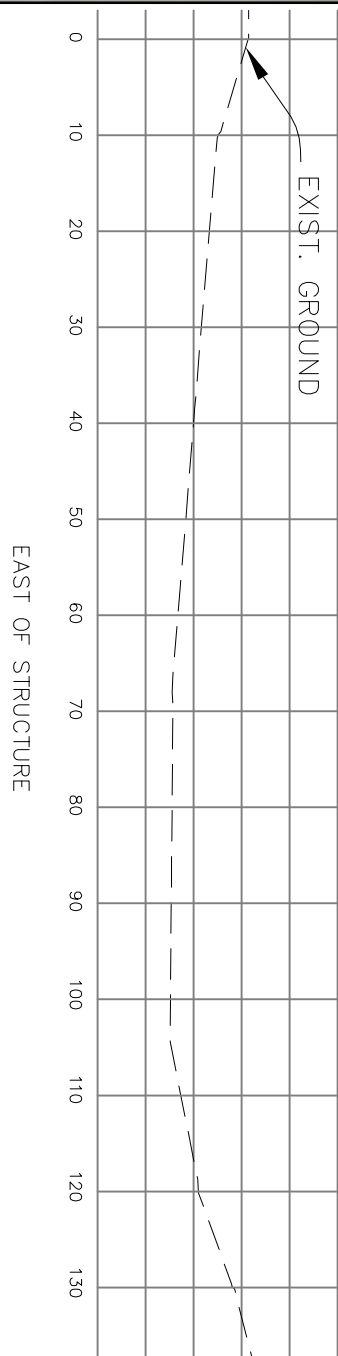
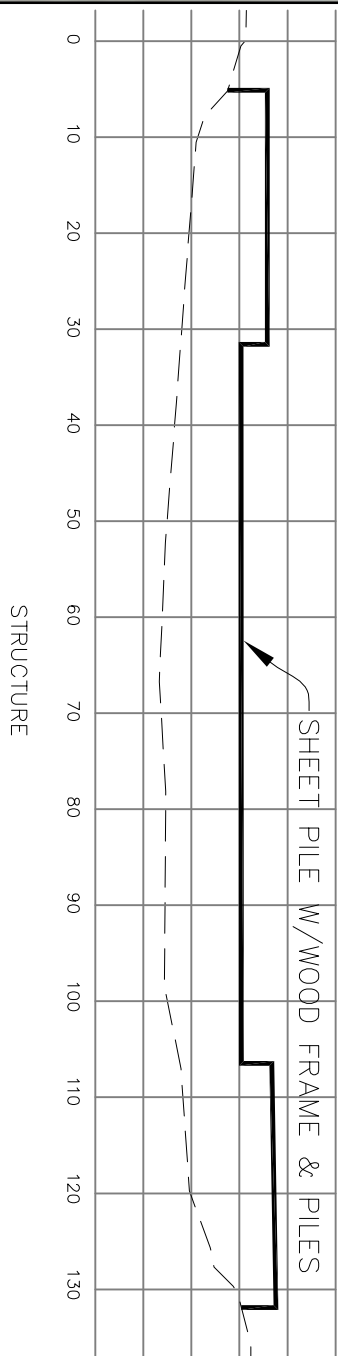
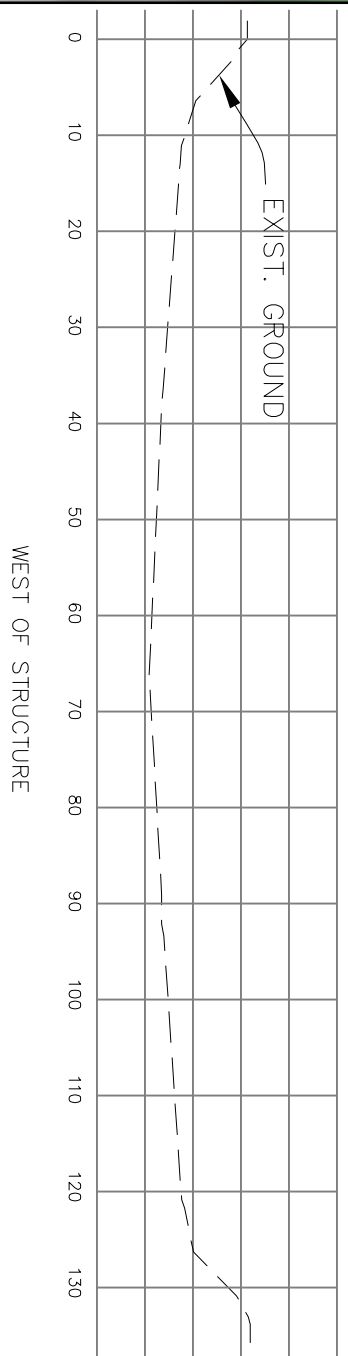
DRAWN BY: P&O      DESIGNED BY: P&O

BATHYMETRIC, TOPOGRAPHIC, AND MANGROVE/RIER SURVEY  
LOST LAKE MARSH CREATION and HYDROLOGIC RESTORATION PROJECT  
PRE-CONSTRUCTION SURVEY

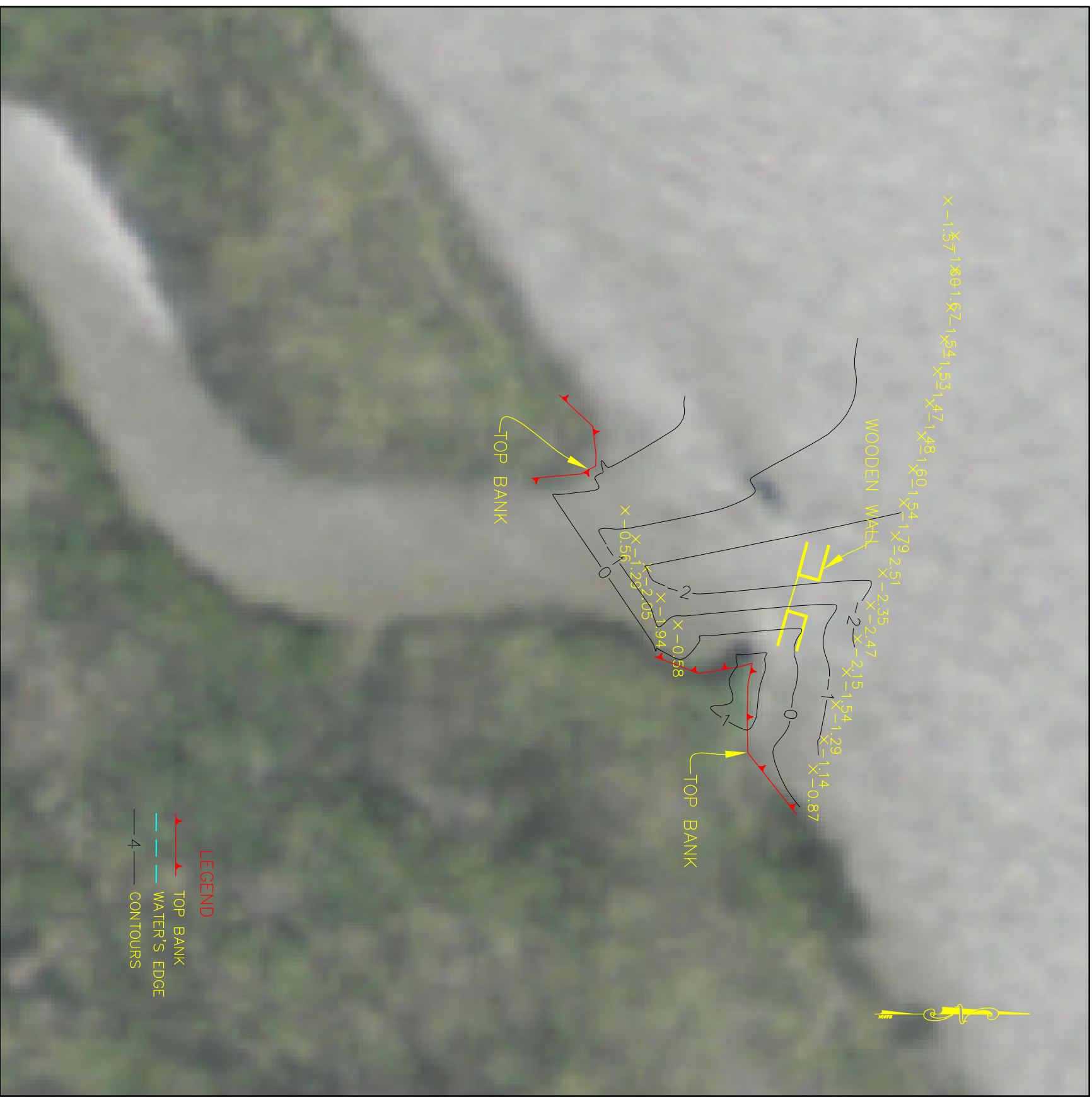
STATE PROJECT NUMBER: 2503-10-49 (TE-72)  
FEDERAL PROJECT NUMBER:

WATER CONTROL STRUCTURE  
NUMBER WC-6  
PLAN AND SECTION

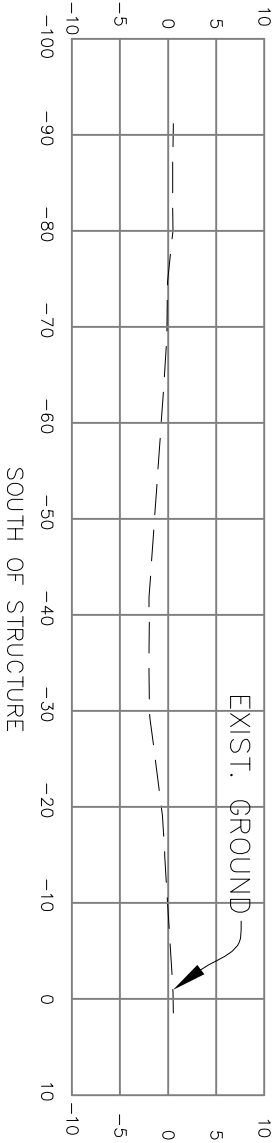
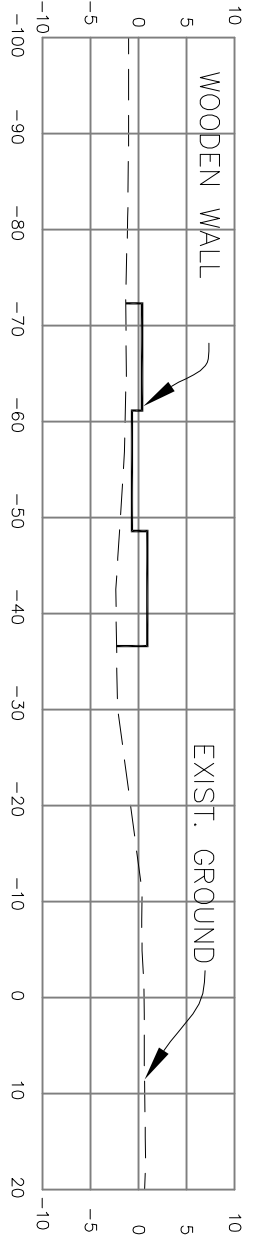
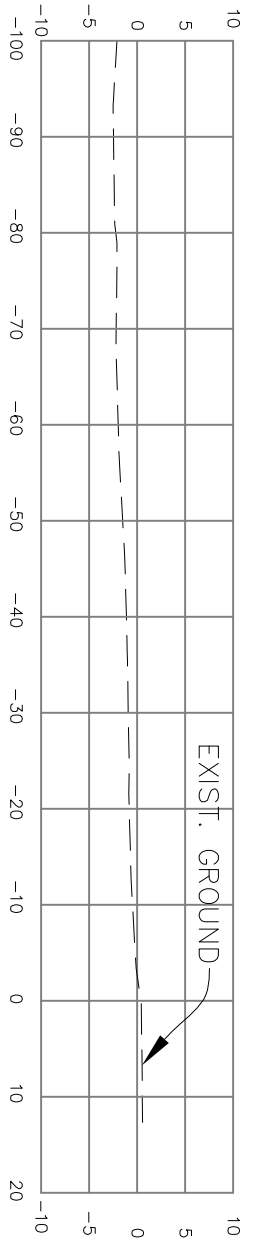
DATE: MAY, 2011  
SHEET 60 OF 68



**SCALE:**  
HORIZ: 1" = 20'  
VERT: 1" = 20'

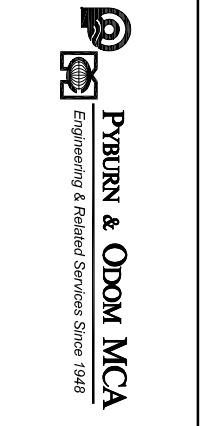


- LEGEND**
- ▲— TOP BANK
  - WATER'S EDGE
  - 4 — CONTOURS

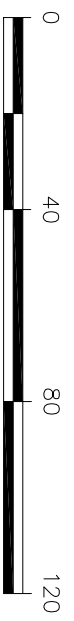


**SCALE:**  
 HORIZ: 1" = 20'  
 VERT: 1" = 20'

REV.	DATE	DESCRIPTION	BY



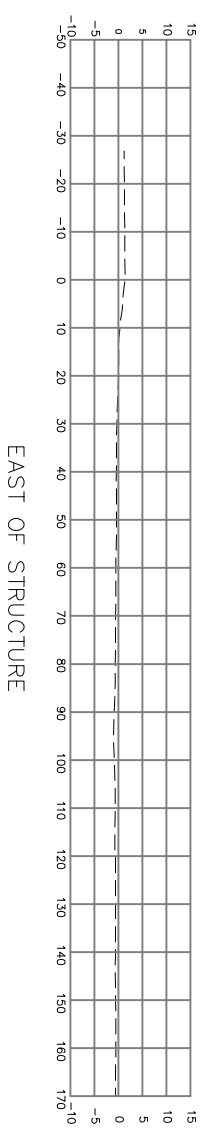
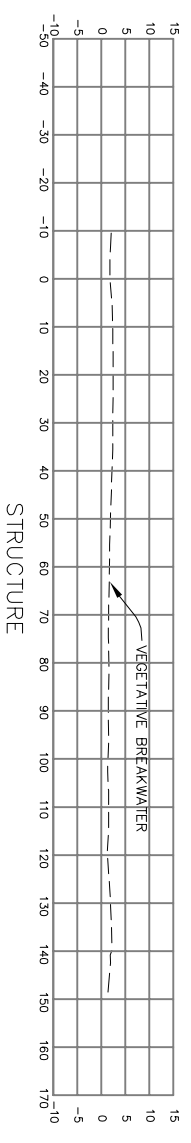
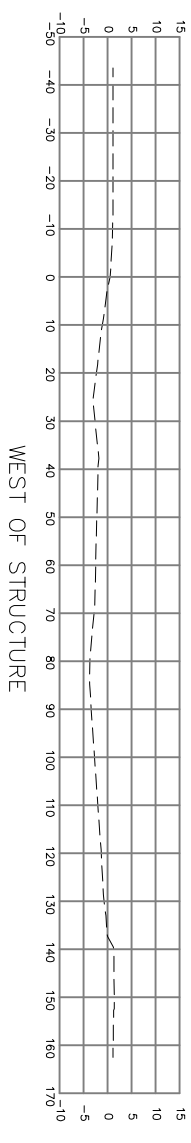
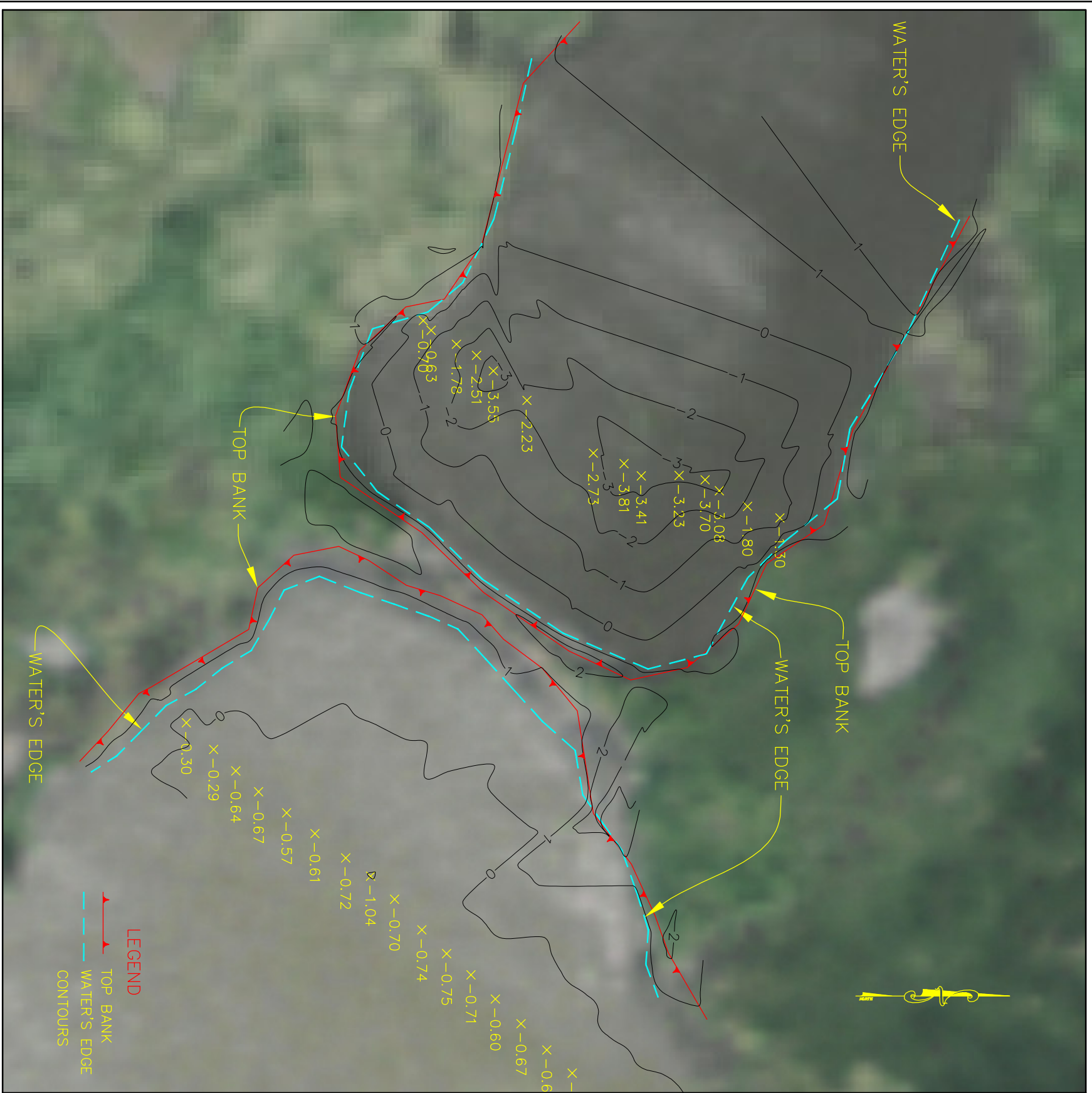
OFFICE OF COASTAL PROTECTION & RESTORATION <b>ENGINEERING BRANCH</b> 450 LAUREL STREET BATON ROUGE, LOUISIANA 70801		BATHYMETRIC, TOPOGRAPHIC AND MANGROVE SURVEY OF LOST LAKE MARSH CREATION and HYDROLOGIC RESTORATION PROJECT PRE-CONSTRUCTION SURVEY		WATER CONTROL STRUCTURE NUMBER WC-7 PLAN AND SECTION	
DRAWN BY: P&O	DESIGNED BY: P&O	APPROVED BY:		DATE: MAY, 2011	SHEET 61 OF 68
FEDERAL PROJECT NUMBER: STATE PROJECT NUMBER: 2503-10-49 (TE-72)		FEDERAL PROJECT NUMBER:			



SCALE: 1" = 40'







**SCALE:**  
 HORIZ: 1"=40'  
 VERT: 1"=40'

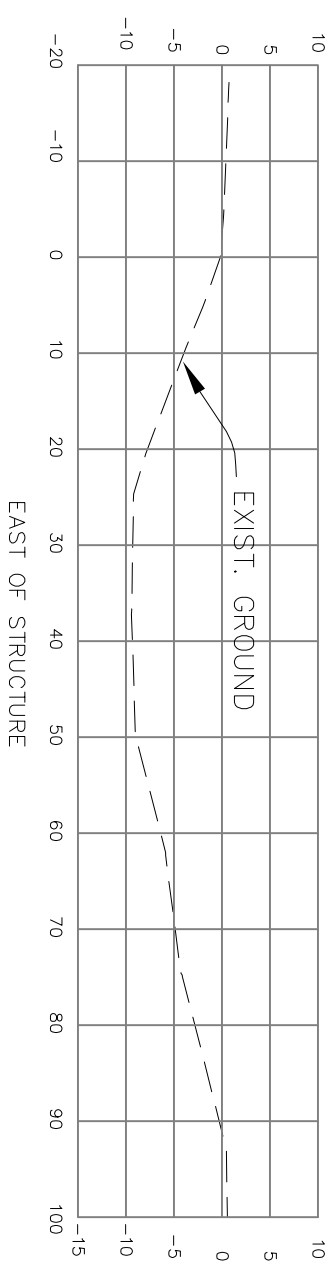
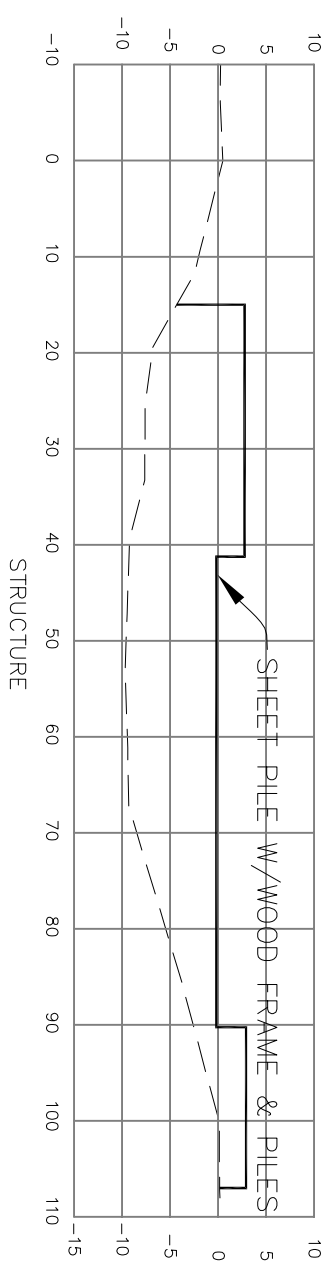
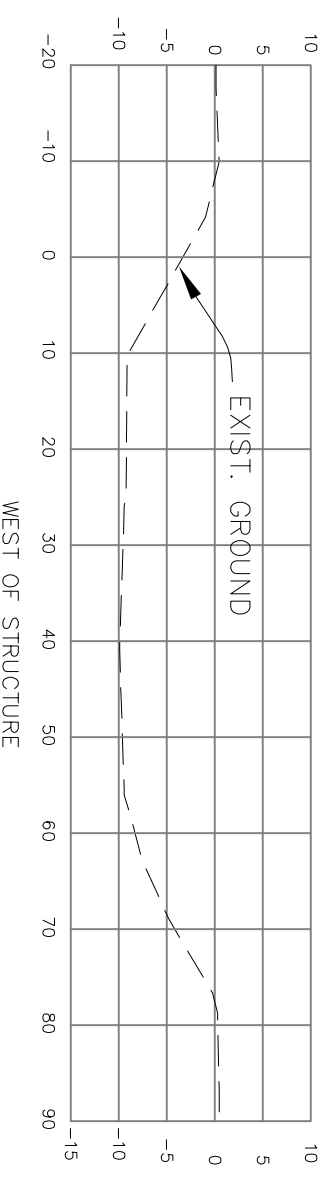
REV.	DATE	DESCRIPTION	BY

**Pyburn & Odom MCA**  
 Engineering & Related Services Since 1948

**OFFICE OF COASTAL PROTECTION & RESTORATION  
 ENGINEERING BRANCH**  
 450 LAUREL STREET  
 BATON ROUGE, LOUISIANA 70801

DRAWN BY: P&O      DESIGNED BY: P&O

BATON ROUGE, LOUISIANA: TOPOGRAPHIC AND MAGNETOMETRIC SURVEY OF LOST LAKE MARSH CREATION and HYDROLOGIC RESTORATION PROJECT PRE-CONSTRUCTION SURVEY		WATER CONTROL STRUCTURE NUMBER WC9 PLAN AND SECTION	
STATE PROJECT NUMBER: 2503-10-49 (TE-72)	FEDERAL PROJECT NUMBER:	DATE: MAY, 2011	SHEET 69 OF 68
APPROVED BY:			



**SCALE:**  
 HORIZ: 1" = 20'  
 VERT: 1" = 20'

REV.	DATE	DESCRIPTION	BY



**OFFICE OF COASTAL PROTECTION & RESTORATION  
 ENGINEERING BRANCH**  
 450 LAUREL STREET  
 BATON ROUGE, LOUISIANA 70801

DRAWN BY: P&O      DESIGNED BY: P&O

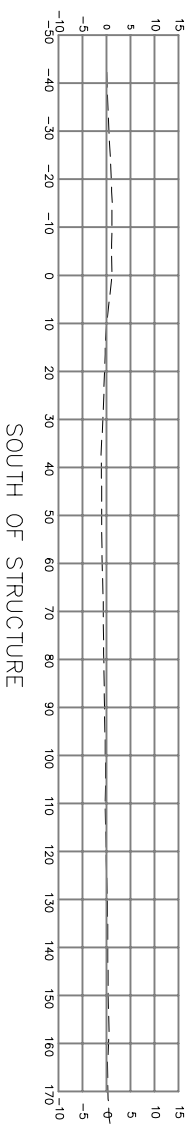
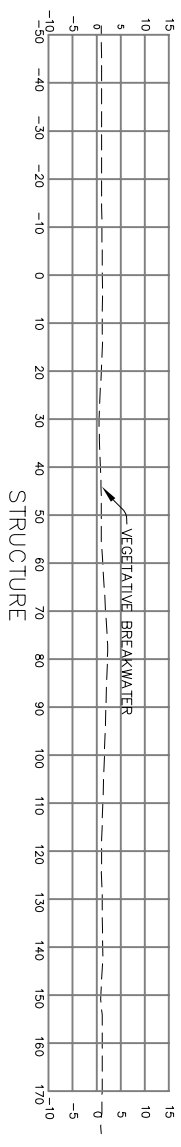
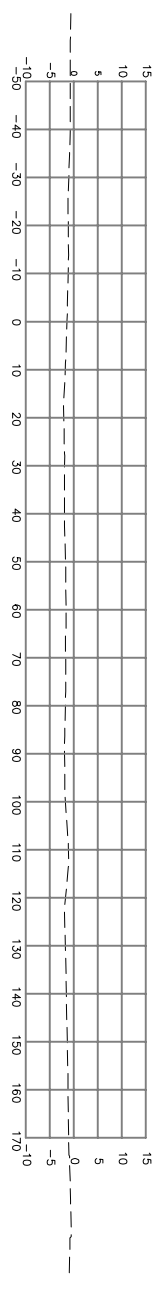
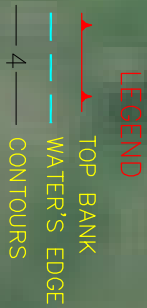
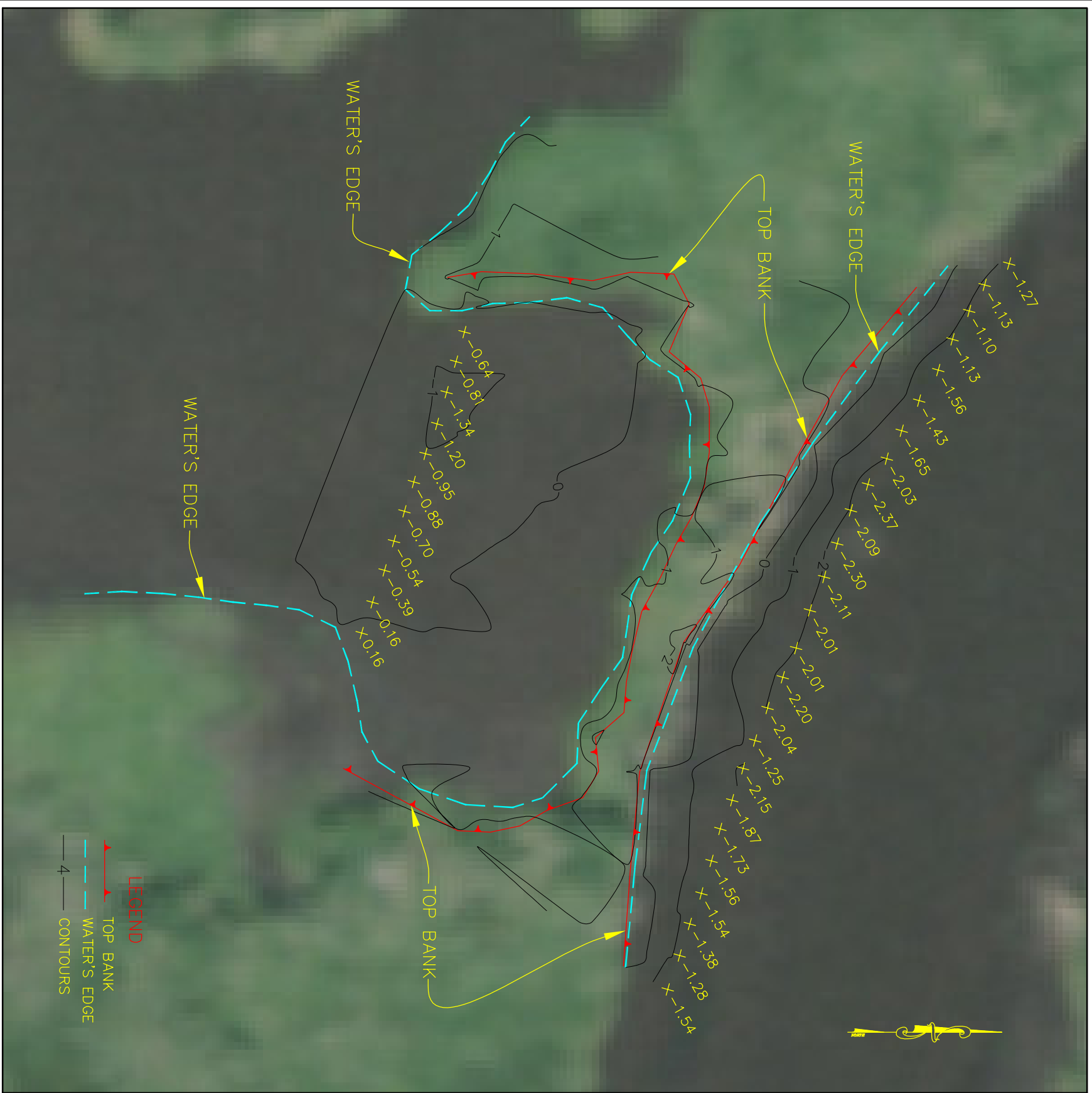
BATHYMETRIC, TOPOGRAPHIC, AND MAGNETOMETRIC SURVEY  
 LOST LAKE MARSH CREATION and  
 HYDROLOGIC RESTORATION PROJECT  
 PRE-CONSTRUCTION SURVEY

STATE PROJECT NUMBER: 2503-10-49 (TE-72)  
 FEDERAL PROJECT NUMBER:

WATER CONTROL STRUCTURE  
 NUMBER WC-10  
 PLAN AND SECTION

DATE: MAY, 2011  
 SHEET 64 OF 68





SCALE:  
 HORIZ: 1"=40'  
 VERT: 1"=40'

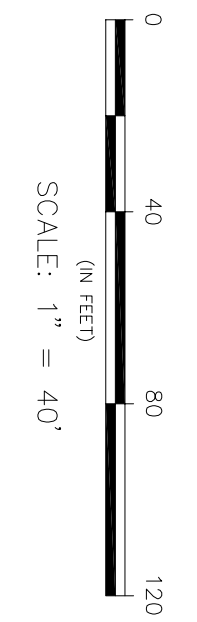
REV.	DATE	DESCRIPTION	BY

**Pyburn & Odom MCA**  
 Engineering & Related Services Since 1948

OFFICE OF COASTAL PROTECTION & RESTORATION  
**ENGINEERING BRANCH**  
 450 LAUREL STREET  
 BATON ROUGE, LOUISIANA 70801

BATON ROUGE TOPOGRAPHIC AND MAGNETOMETER SURVEY  
 OF  
 LOST LAKE MARSH CREATION and  
 HYDROLOGIC RESTORATION PROJECT  
 PRE-INSTRUCTION SURVEY  
 STATE PROJECT NUMBER: 2503-10-49 (TE-72)  
 FEDERAL PROJECT NUMBER:

WATER CONTROL STRUCTURE  
 NUMBER WC-12  
 PLAN AND SECTION  
 DATE: MAY, 2011  
 SHEET 66 OF 68



DRAWN BY: P&O      DESIGNED BY: P&O      APPROVED BY:



**LEGEND**  
 TOP BANK  
 WATER'S EDGE  
 CONTOURS



REV.	DATE	DESCRIPTION	BY



OFFICE OF COASTAL PROTECTION & RESTORATION  
**ENGINEERING BRANCH**  
 450 LAUREL STREET  
 BATON ROUGE, LOUISIANA 70801

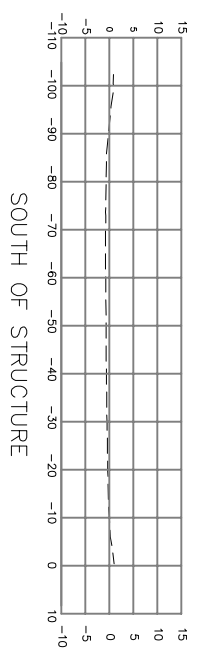
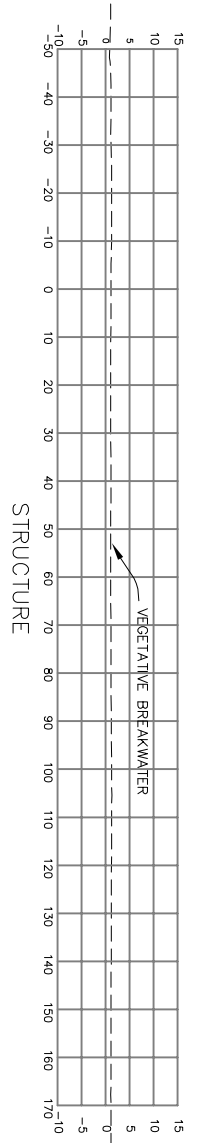
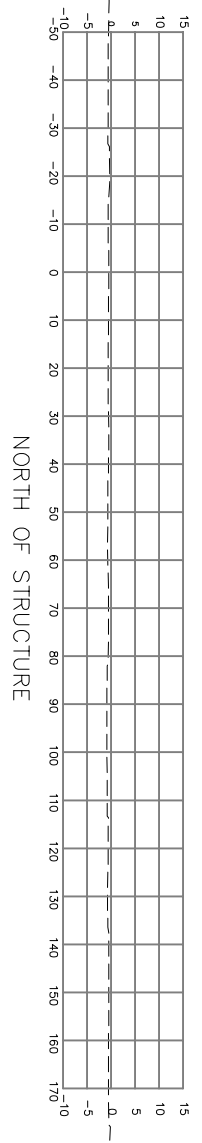
DRAWN BY: P&O      DESIGNED BY: P&O

BATHYMETRIC, TOPOGRAPHIC AND MAGNETOMETRIC SURVEY  
 OF  
**LOST LAKE MARSH CREATION and**  
**HYDROLOGIC RESTORATION PROJECT**  
PRE-CONSTRUCTION SURVEY

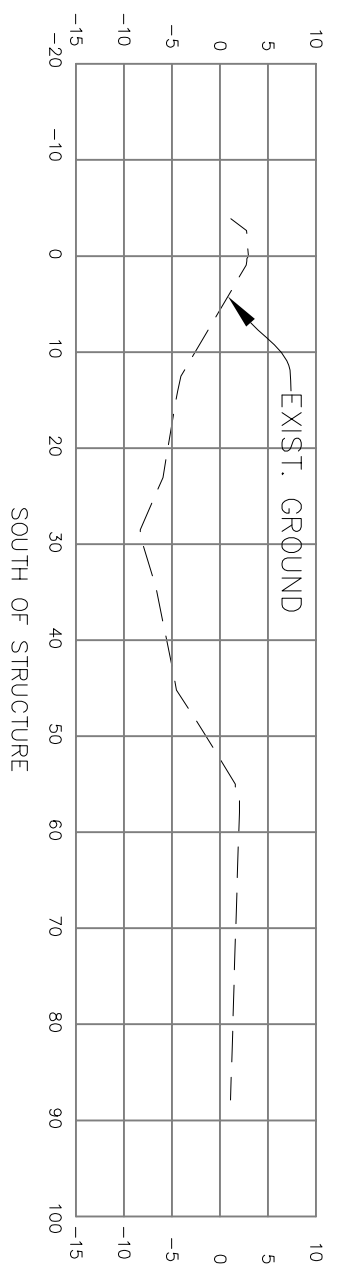
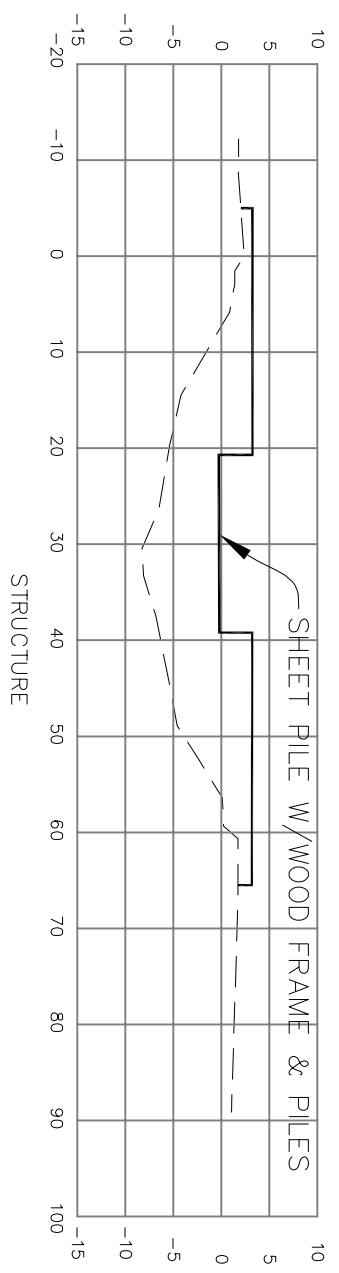
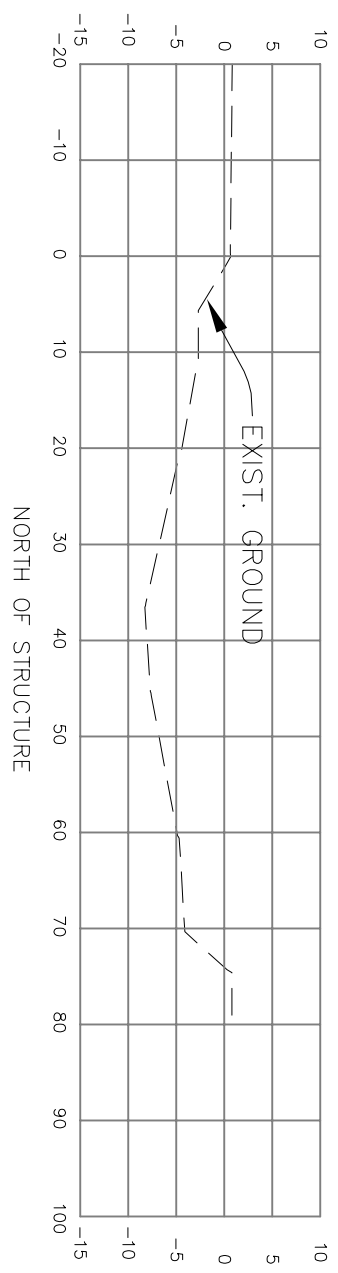
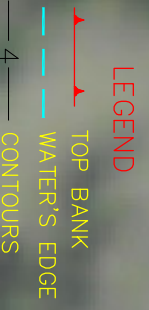
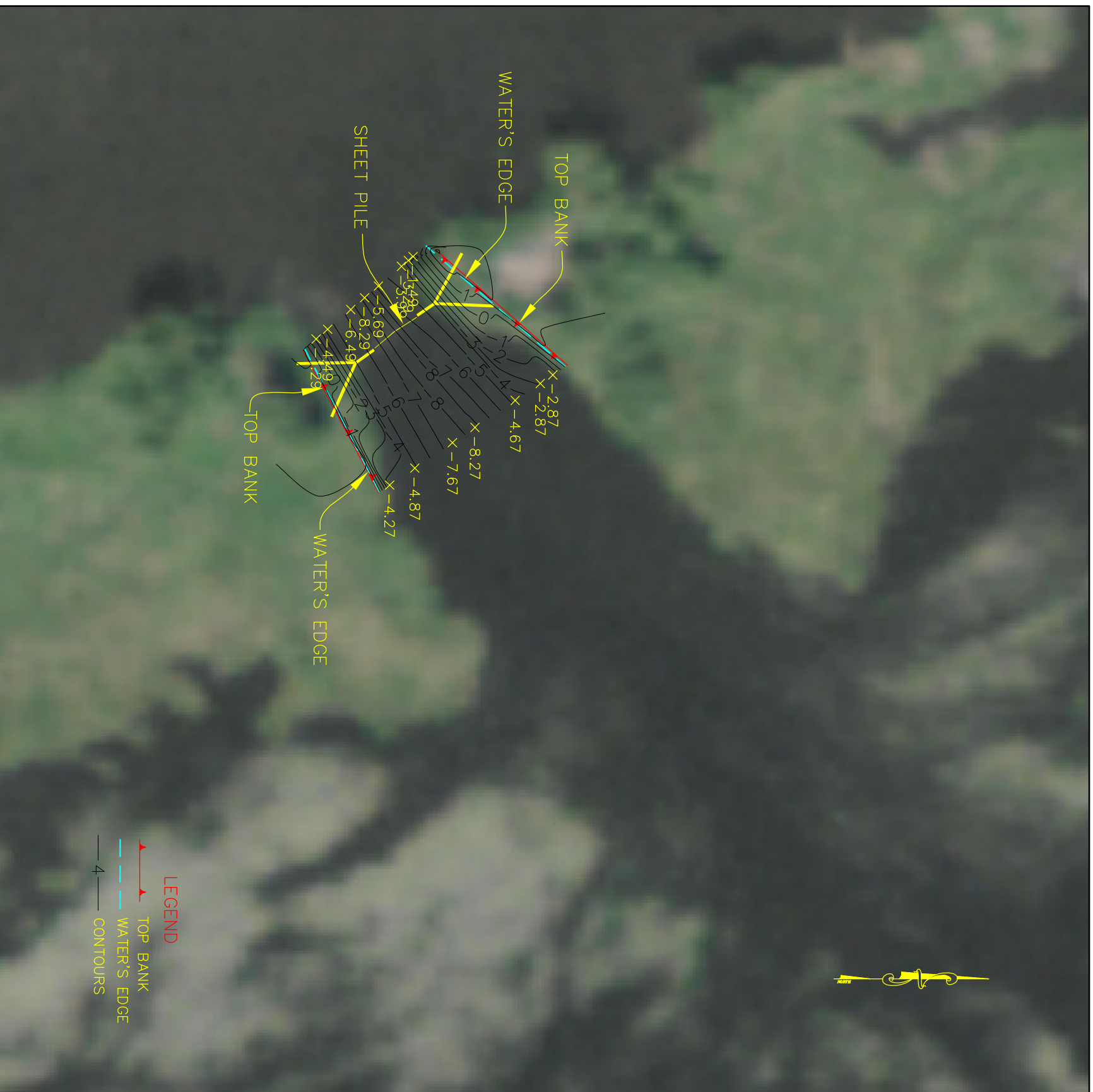
STATE PROJECT NUMBER: 2503-10-49 (TE-72)  
 FEDERAL PROJECT NUMBER:

WATER CONTROL STRUCTURE  
 NUMBER WC-13  
 PLAN AND SECTION

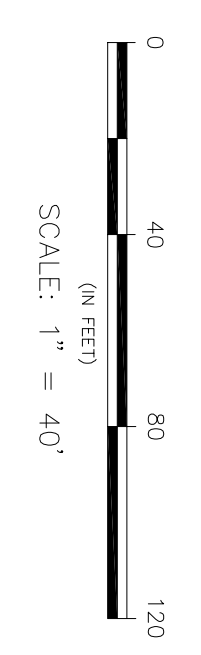
DATE: MAY, 2011  
 SHEET 67 OF 68



SCALE:  
 HORIZ: 1" = 40'  
 VERT: 1" = 40'



SCALE:  
 HORIZ: 1" = 40'  
 VERT: 1" = 5'



REV.	DATE	DESCRIPTION	BY

**Pyburn & Odom MCA**  
 Engineering & Related Services Since 1948

OFFICE OF COASTAL PROTECTION & RESTORATION  
**ENGINEERING BRANCH**  
 450 LAUREL STREET  
 BATON ROUGE, LOUISIANA 70801

DRAWN BY: P&O      DESIGNED BY: P&O

BATON ROUGE, LOUISIANA, AND MAGNOLIA, MISSISSIPPI  
 LOST LAKE MARSH CREATION AND  
 HYDROLOGIC RESTORATION PROJECT  
 PRE-CONSTRUCTION SURVEY

STATE PROJECT NUMBER: 2503-10-49 (TE-72)  
 FEDERAL PROJECT NUMBER:

WATER CONTROL STRUCTURE  
 NUMBER WC-14  
 PLAN AND SECTION

DATE: MAY, 2011  
 SHEET 68 OF 68