

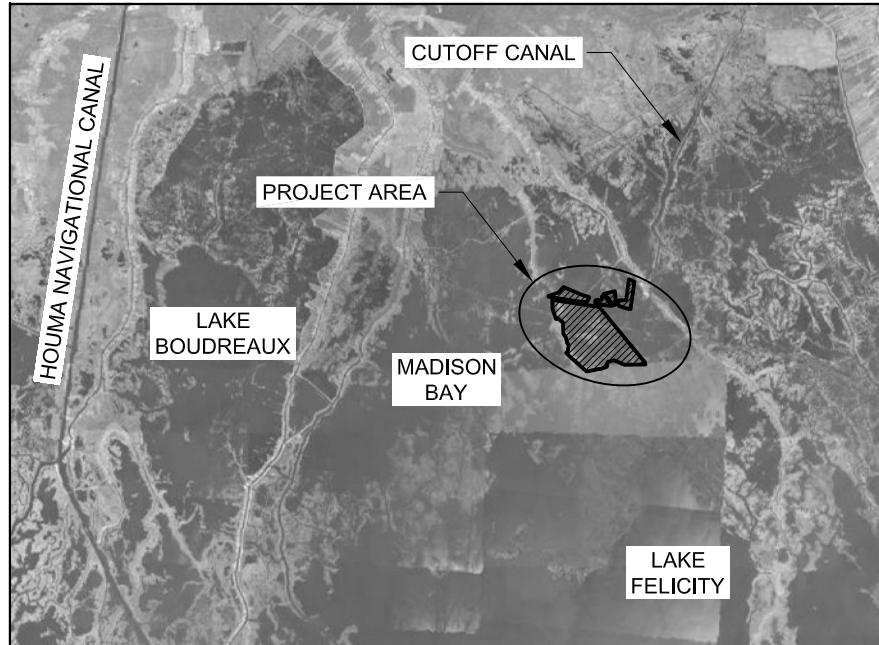
INDEX TO SHEETS

<u>SHEET NO.</u>	<u>DESCRIPTION</u>
1	TITLE SHEET
2	SAMPLING LAYOUT
3	TYPICAL SECTIONS

STATE OF LOUISIANA
COASTAL PROTECTION AND RESTORATION AUTHORITY

ISLAND ROAD MARSH CREATION
AND NOURISHMENT PROJECT

TE-117
TERREBONNE PARISH

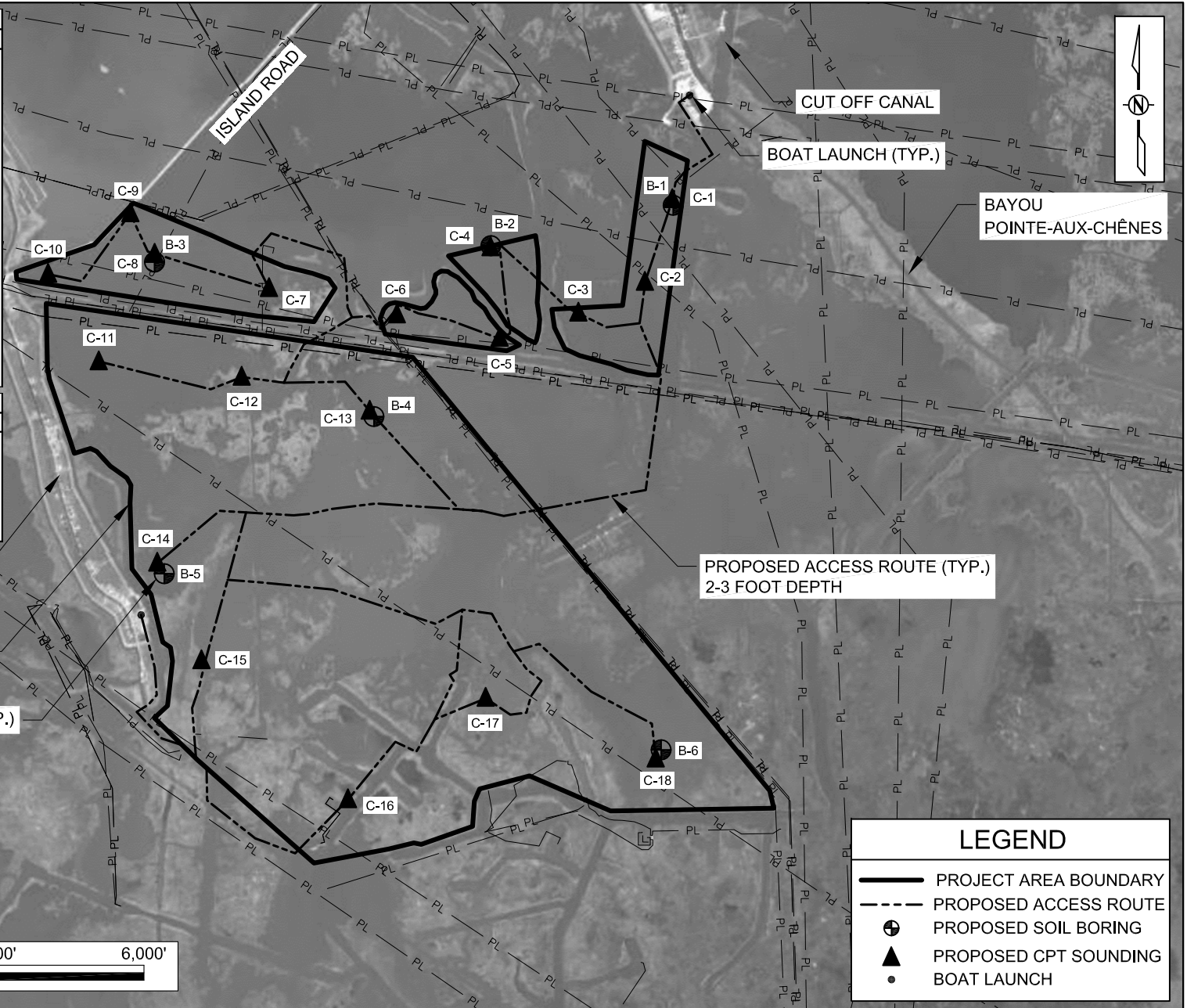


EXPLORATORY GEOTECHNICAL SAMPLING PLAN

APPLICATION BY: COASTAL PROTECTION & RESTORATION AUTHORITY P.O. BOX 44027 BATON ROUGE, LA 70804	COASTAL PROTECTION AND RESTORATION AUTHORITY 450 LAUREL STREET BATON ROUGE, LOUISIANA 70801	ISLAND ROAD MARSH CREATION AND NOURISHMENT PROJECT	TITLE SHEET
DRAWN BY: SHANE FAUST	DESIGNED BY: J. BOUDREAU, E.I.	APPROVED BY: RUDY SIMONEAU, P.E.	STATE PROJECT NUMBER: TE-117 FEDERAL PROJECT NUMBER: N/A
		DATE: NOVEMBER 2014	SHEET 1 OF 3

CPT DETAILS			
CPT ID	LATITUDE	LONGITUDE	DEPTH
C-1	N 29° 24' 38.34"	W 90° 26' 58.06"	50 FT
C-2	N 29° 24' 22.78"	W 90° 27' 03.26"	30 FT
C-3	N 29° 24' 15.63"	W 90° 27' 12.98"	30 FT
C-4	N 29° 24' 30.63"	W 90° 27' 39.29"	50 FT
C-5	N 29° 24' 11.48"	W 90° 27' 38.71"	30 FT
C-6	N 29° 24' 17.81"	W 90° 28' 01.59"	30 FT
C-7	N 29° 24' 21.32"	W 90° 28' 28.47"	30 FT
C-8	N 29° 24' 27.89"	W 90° 28' 55.26"	50 FT
C-9	N 29° 24' 37.06"	W 90° 29' 01.97"	30 FT
C-10	N 29° 24' 24.33"	W 90° 29' 19.13"	30 FT
C-11	N 29° 24' 07.79"	W 90° 29' 07.46"	30 FT
C-12	N 29° 24' 04.07"	W 90° 28' 35.45"	30 FT
C-13	N 29° 23' 57.03"	W 90° 28' 06.00"	30 FT
C-14	N 29° 23' 26.28"	W 90° 28' 53.59"	50 FT
C-15	N 29° 23' 08.56"	W 90° 28' 43.49"	30 FT
C-16	N 29° 22' 40.50"	W 90° 28' 11.15"	30 FT
C-17	N 29° 23' 00.38"	W 90° 27' 40.59"	30 FT
C-18	N 29° 22' 50.73"	W 90° 27' 01.73"	30 FT

BORING DETAILS			
BORING ID	LATITUDE	LONGITUDE	DEPTH
B-1	N 29° 24' 38.34"	W 90° 26' 58.06"	30 FT
B-2	N 29° 24' 30.63"	W 90° 27' 39.29"	50 FT
B-3	N 29° 24' 27.89"	W 90° 28' 55.26"	30 FT
B-4	N 29° 23' 57.03"	W 90° 28' 06.00"	30 FT
B-5	N 29° 23' 26.28"	W 90° 28' 53.59"	30 FT
B-6	N 29° 22' 50.73"	W 90° 27' 01.73"	30 FT



APPLICATION BY:
 COASTAL PROTECTION & RESTORATION AUTHORITY
 P.O. BOX 44027
 BATON ROUGE, LA 70801

COASTAL PROTECTION AND RESTORATION AUTHORITY
 450 LAUREL STREET
 BATON ROUGE, LOUISIANA 70801

ISLAND ROAD MARSH CREATION AND NOURISHMENT PROJECT

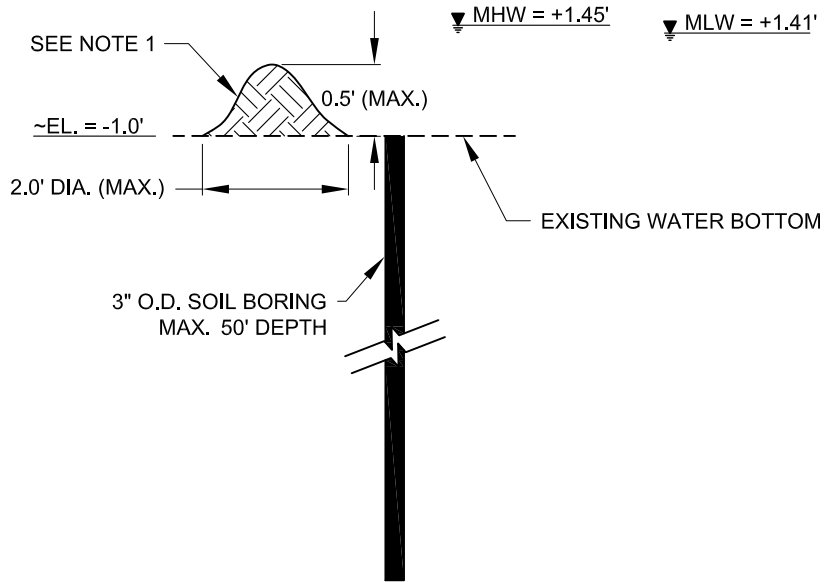
STATE PROJECT NUMBER: TE-117

FEDERAL PROJECT NUMBER: N/A

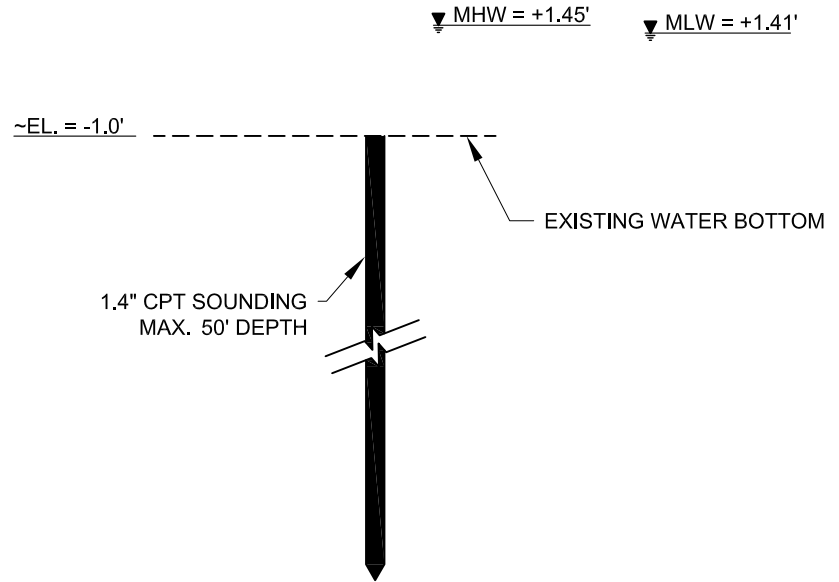
SAMPLING LAYOUT

DATE: NOVEMBER 2014

SHEET 2 OF 3



TYPICAL MARSH SOIL BORING SECTION
NOT TO SCALE



TYPICAL CPT SOUNDING SECTION
NOT TO SCALE

NOTES:

1. FOR EACH BORE HOLE UP TO 0.09 CUBIC YARDS (CY) OF THE MATERIAL WILL BE EXCAVATED AND HAULED OFF SITE. A ROTARY WASH DRILLING METHOD WILL BE USED TO ADVANCE THE SAMPLE TO THE SPECIFIED DEPTH. ANY SPOIL OR EXCESS SOIL REMOVED DURING THE SAMPLING PROCESS WILL BE PLACED ADJACENT TO THE BORE HOLE ACCORDING TO THE SPECIFIED DIMENSIONS.
2. ALL EQUIPMENT USED WILL REMAIN IN THE OPEN WATER.
3. FULLY LOADED VESSEL DRAFT NOT TO EXCEED 1 FOOT.

APPLICATION BY: COASTAL PROTECTION & RESTORATION AUTHORITY P.O. BOX 44027 BATON ROUGE, LA 70801	COASTAL PROTECTION AND RESTORATION AUTHORITY 450 LAUREL STREET BATON ROUGE, LOUISIANA 70801	ISLAND ROAD MARSH CREATION AND NOURISHMENT PROJECT	TYPICAL SECTIONS
DRAWN BY: SHANE FAUST		STATE PROJECT NUMBER: TE-117	DATE: NOVEMBER 2014
DESIGNED BY: J. BOUDREAUX, E.I.	APPROVED BY: RUDY SIMONEAUX, P.E.	FEDERAL PROJECT NUMBER: N/A	SHEET 3 OF 3