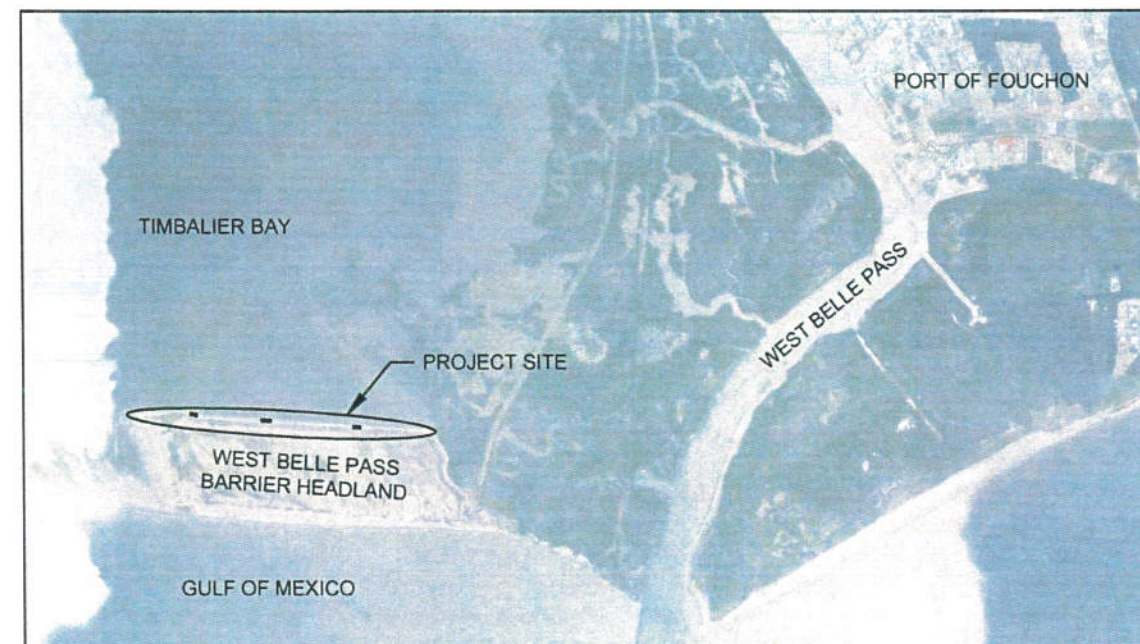


INDEX TO SHEETS

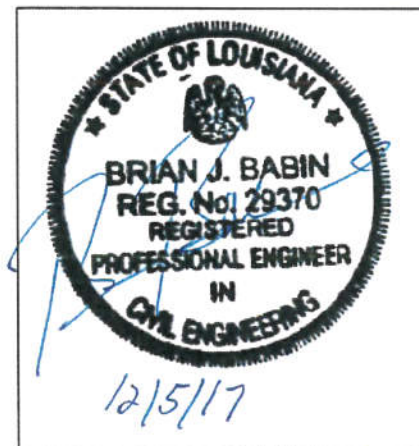
SHEET NO.	DESCRIPTION
1	TITLE SHEET
2	GENERAL NOTES
3	ACCESS ROUTE
4	PLAN/PROFILE
5	CROSS SECTIONS
6	CROSS SECTIONS

STATE OF LOUISIANA
COASTAL PROTECTION AND RESTORATION AUTHORITY

WEST BELLE PASS BARRIER HEADLAND
RESTORATION PROJECT – 2018 MAINTENANCE EVENT
STATE PROJECT NO. TE-0052
LAFOURCHE PARISH, LA



8,000' 4,000' 0' 8,000' 16,000'



[Signature]
CHIEF, OPERATIONS DIVISION
[Signature]
ENGINEER MANAGER
[Signature]
PROJECT ENGINEER

LICENSURE CLASSIFICATION REQUIREMENTS
CLASSIFICATION III HEAVY CONSTRUCTION

				COASTAL PROTECTION AND RESTORATION AUTHORITY 1440 TIGER DRIVE, SUITE B THIBODAUx, LOUISIANA 70301	WEST BELLE PASS 2018 MAINTENANCE EVENT		TITLE SHEET
					STATE PROJECT NUMBER: TE-0052		
					FEDERAL PROJECT NUMBER TE-0052		DATE 12/2017
REV	DATE	DESCRIPTION	BY		DRAWN BY BEN HARTMAN, E.I	DESIGNED BY BEN HARTMAN, E.I	APPROVED BY BRIAN BABIN, P.E

GENERAL NOTES

1. PLANS AND SPECIFICATIONS ARE COMPLEMENTARY; WHAT IS REQUIRED BY ONE IS BINDING AS IF REQUIRED BY ALL. CLARIFICATIONS AND INTERPRETATIONS OF, OR NOTIFICATIONS OF MINOR VARIATIONS AND DEVIATIONS IN THE CONTRACT DOCUMENTS, WILL BE ISSUED BY THE ENGINEER, IF NECESSARY.
2. ALL DISTANCE MEASUREMENTS SHOWN ON THE PLANS ARE APPROXIMATE.
3. NO EQUIPMENT MAY ALTER THE EXISTING CONDITIONS OF THE NEWLY CREATED DUNE PLATFORM OR DISTURB EXISTING VEGETATION, EXCLUDING VEGETATION IN THE FOOTPRINT OF THE GAP, SPOIL, OR DESIGNATED ACCESS ROUTE.
4. ANY DAMAGE TO EXISTING U.S. COAST GUARD NAVIGATION AIDS OR PRIVATE NAVIGATION AIDS SHALL BE REPAIRED BY THE CONTRACTOR TO U.S. COAST GUARD STANDARDS AT THE EXPENSE OF THE CONTRACTOR.
5. MEAN HIGH WATER (MHW) AND MEAN LOW WATER (MLW) ELEVATIONS ARE ADOPTED FROM THE ORIGINAL PROJECT PERMIT AND PLANS, WHICH IS BASED ON THE TIDE STATION AT PORT FOUCHON. ELEVATIONS ARE REFERENCED TO NAVD 88, US FEET.
6. ALL EQUIPMENT SHALL BE FLOATING AT ALL TIMES DURING TRANSIT TO AND FROM THE PROJECT SITE.

SHOWN BELOW IS A LIST OF PIPELINE COMPANIES KNOWN TO OPERATE IN THE AREA DURING INITIAL CONSTRUCTION

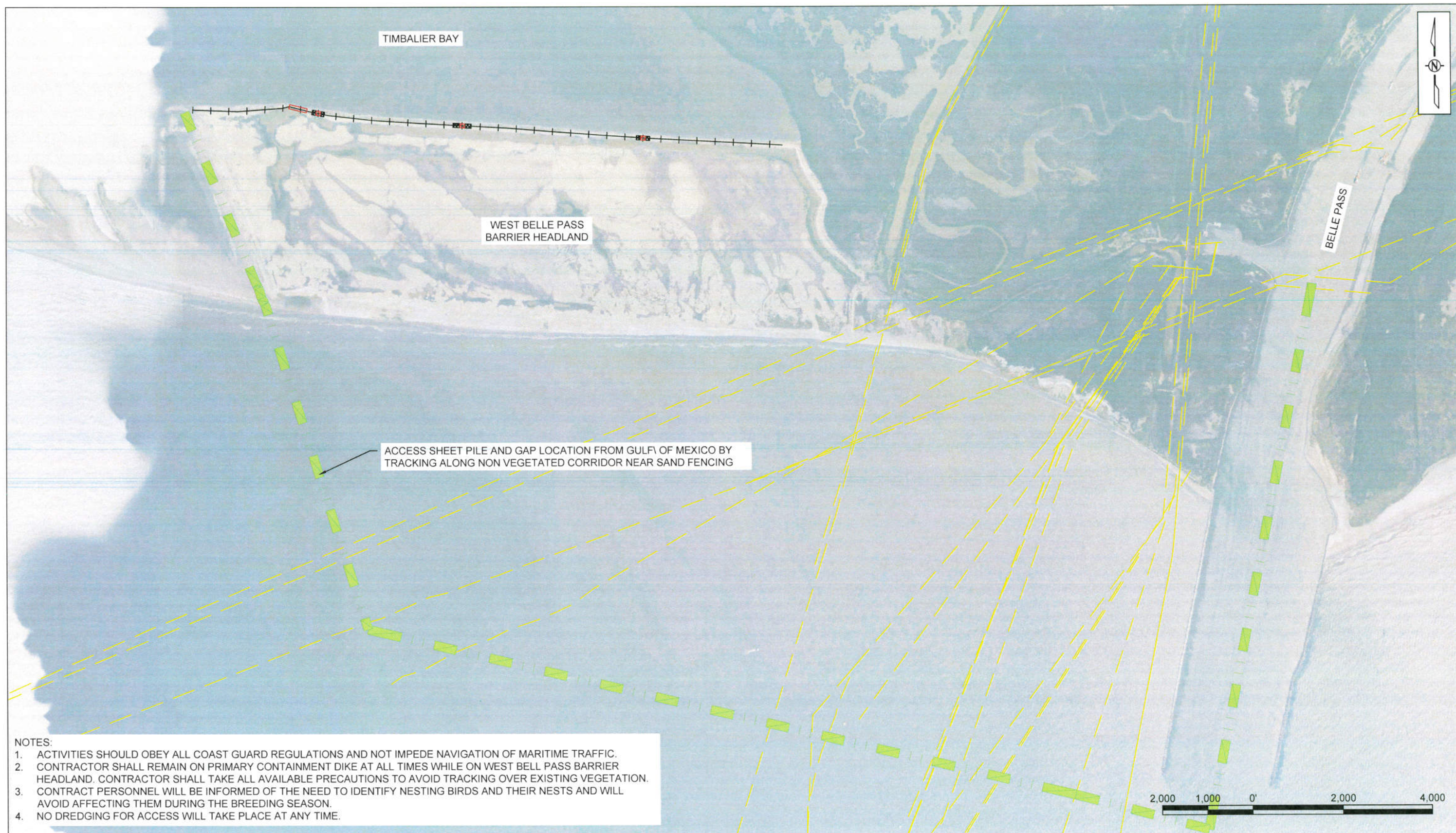
- CHEVRON PIPELINE COMPANY
- TENNESSEE GAS PIPELINE
- WILLIAMS GAS PIPELINE

THIS IS NOT A COMPREHENSIVE LIST OF ALL PIPELINE AND GAS UTILITIES OPERATING IN THE AREA.. THE CONTRACTOR SHALL ASSUME RESPONSIBILITY TO CONDUCT ALL CROSSINGS SAFELY IN NAVIGABLE WATER. THE CONTRACTOR SHALL NOTIFY EACH PIPELINE COMPANY OF PROJECT INITIATION NOT LESS THAN 10 WORKING DAYS PRIOR TO MOBILIZATION.

SUMMARY OF ESTIMATED QUANTITIES

ITEM NO.	DESCRIPTION	UNIT	ESTIMATED QUANTITY
1	MOBILIZATION/DEMOBILIZATION	LUMP SUM	1
2	REMOVE SHEET PILE WALL	LUMP SUM	1
3	DEGRADE CONTAINMENT DIKE	EACH	3

				COASTAL PROTECTION & RESTORATION AUTHORITY THIBODAUX REGIONAL OFFICE 1440 TIGER DRIVE, SUITE B THIBODAUX, LOUISIANA 70301		WEST BELLE PASS 2018 MAINTENANCE EVENT	GENERAL NOTES
						STATE PROJECT NUMBER: TE-0052	
						FEDERAL PROJECT NUMBER: TE-0052	
REV.	DATE	DESCRIPTION	BY	DRAWN BY: BEN HARTMAN, E.I		APPROVED BY: BRIAN BABIN, P.E.	SHEET 2 OF 6



LEGEND

- | | | | |
|--|------------------------------------|--|--------------------------|
| | EARTHEN CONTAINMENT TO BE DEGRADED | | KNOWN PIPELINE LOCATIONS |
| | EARTHEN CONTAINMENT TO REMAIN | | SPOIL PLACEMENT LOCATION |
| | | | ACCESS ROUTE |

PATH: F:\Engineering\Basins\TE\TE-52\G.2 - 2017 Maintenance Event\G - Engineering & Design\G.2.1.k - Preliminary Design Reports & Plans\Construction Plans

REV	DATE	DESCRIPTION	BY
A	08/24/2017	CHANGES TO ACCESS ROUTE	BJH

COASTAL PROTECTION & RESTORATION AUTHORITY
THIBODAUX REGIONAL OFFICE
1440 TIGER DRIVE, SUITE B
THIBODAUX, LOUISIANA 70301

DRAWN BY: BEN HARTMAN, E.I. DESIGNED BY: BEN HARTMAN, E.I.

WEST BELLE PASS
2018 MAINTENANCE EVENT

STATE PROJECT NUMBER: TE-0052

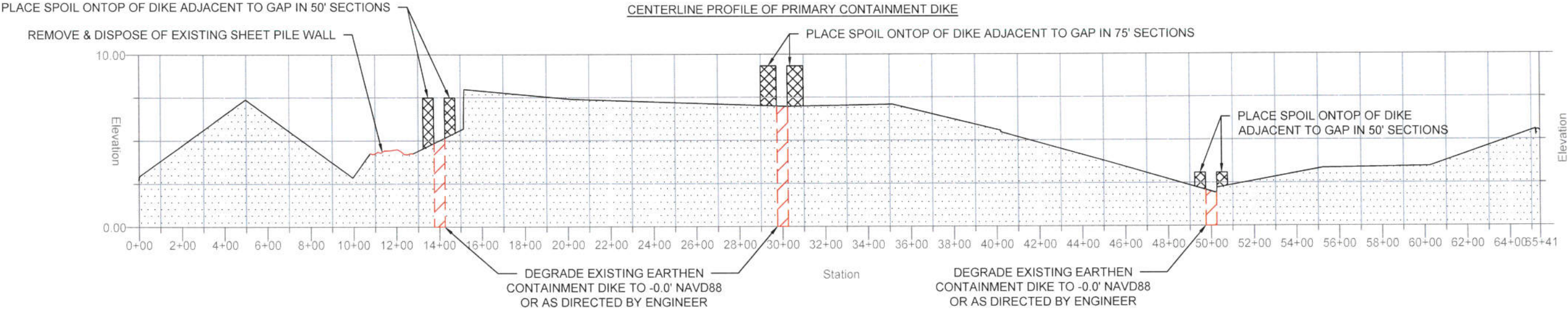
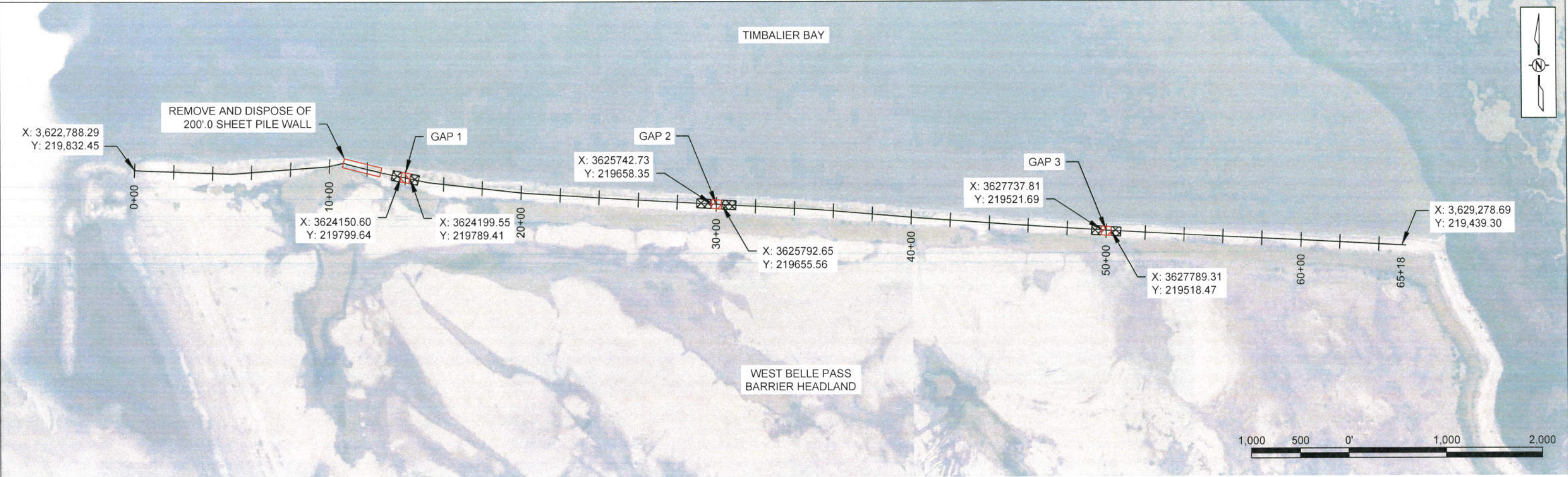
FEDERAL PROJECT NUMBER: TE-0052

APPROVED BY: BRIAN BABIN, P.E.

ACCESS ROUTE

DATE: 12/2017

SHEET 3 OF 6



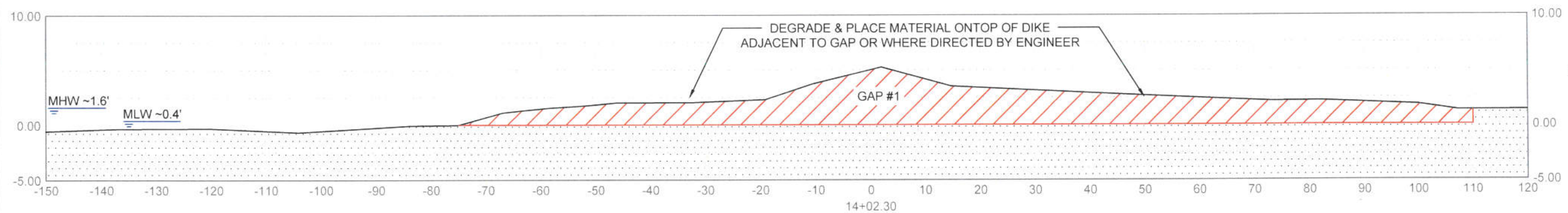
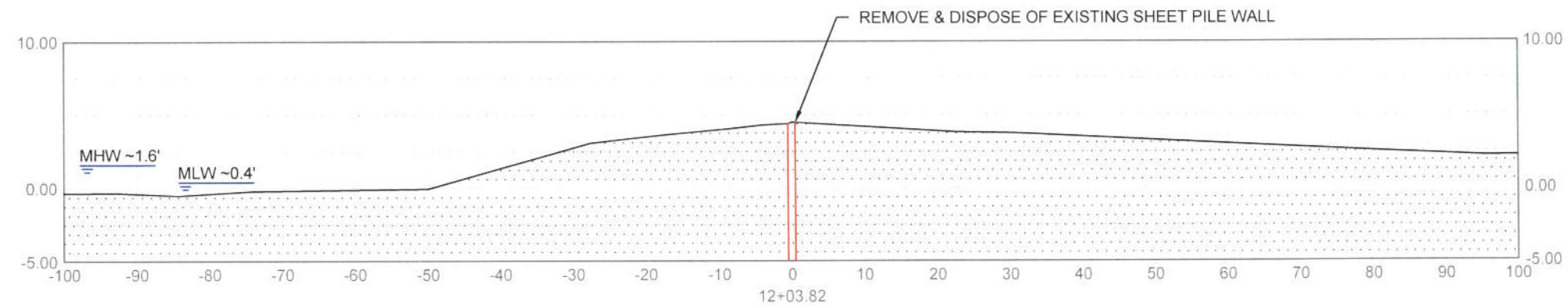
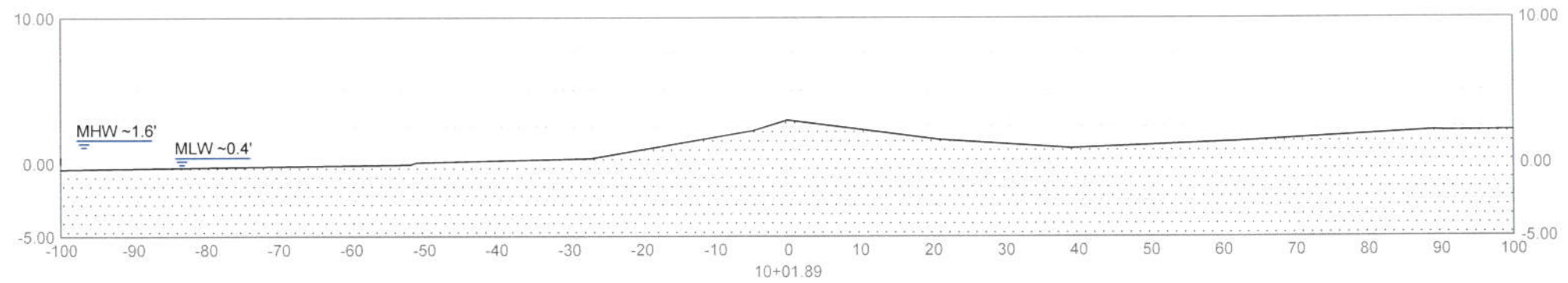
- NOTES:
1. MATERIAL REMOVED FROM PRIMARY CONTAINMENT DIKE SHOULD BE PLACED ADJACENT TO OPENING ON TOP OF DIKE OR WHERE DIRECTED BY ENGINEER
 2. GAPS OF THE PRIMARY CONTAINMENT DIKE WILL BE 50' IN BOTTOM WIDTH, HAVE 3:1 SIDE SLOPES, AND SHOULD CONNECT THE INTERIOR BAYOU TO TIMBALIER BAY
 3. ALL ACTIVITIES ASSOCIATED WITH REMOVING AND DISPOSING OF THE SHEETPILE WALL SHALL BE PAID UNDER BID ITEM No. 2.
 4. ACTIVITIES SHOULD OBEY ALL COAST GUARD REGULATIONS AND NOT IMPEDE NAVIGATION OF MARITIME TRAFFIC
 5. CONSTRUCTION OF GAPS WILL BE PAID UNDER BID ITEM No. 3, WITH THE OWNER RESERVING THE RIGHT TO ADD/REMOVE ADDITIONAL GAPS
 6. CENTERLINE PROFILE DATA AND GPS COORDINATES FOR GAPPING COME FROM DATA COLLECTED BY HYDROTERRA TECHNOLOGIES, LLC ON FEB 1-3 2017.

LEGEND

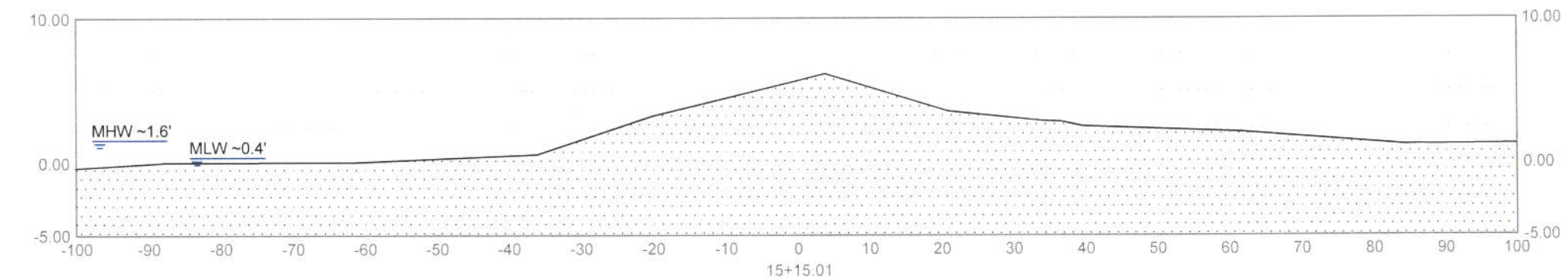
	EARTHEN CONTAINMENT TO BE DEGRADED		SPOIL PLACEMENT LOCATION
	EARTHEN CONTAINMENT TO REMAIN		

PATH: F:\Engineering\Basins\TE\TE-52\G.2 - 2017 Maintenance Event\C - Engineering & Design\G.2.1.k - Preliminary Design Reports & Plans\Construction Plans

				COASTAL PROTECTION & RESTORATION AUTHORITY THIBODAUx REGIONAL OFFICE 1440 TIGER DRIVE, SUITE B THIBODAUx, LOUISIANA 70301		WEST BELLE PASS 2018 MAINTENANCE EVENT		PLAN/PROFILE	
						STATE PROJECT NUMBER: TE-0052			
						FEDERAL PROJECT NUMBER: TE-0052		DATE: 12/2017	
REV.	DATE	DESCRIPTION	BY			DRAWN BY: BEN HARTMAN, E.I.	DESIGNED BY: BEN HARTMAN, E.I.	APPROVED BY: BRIAN BABIN, P.E.	SHEET 4 OF 6



C/L COORDINATES
 X: 3624150.60
 Y: 219799.64
 X: 3624199.55
 Y: 219789.41



LEGEND

- EARTHEN CONTAINMENT TO BE DEGRADED
- EARTHEN CONTAINMENT TO REMAIN

PATH: F:\Engineering\Basins\TE\TE-52\G.2 - 2017 Maintenance Event\C - Engineering & Design\G.2.1.k - Preliminary Design Reports & Plans\Construction Plans

REV.	DATE	DESCRIPTION	BY

COASTAL PROTECTION & RESTORATION AUTHORITY
THIBODAUX REGIONAL OFFICE
 1440 TIGER DRIVE, SUITE B
 THIBODAUX, LOUISIANA 70301

DRAWN BY: BEN HARTMAN, E.I. DESIGNED BY: BEN HARTMAN, E.I.

WEST BELLE PASS
 2018 MAINTENANCE EVENT

STATE PROJECT NUMBER: TE-0052

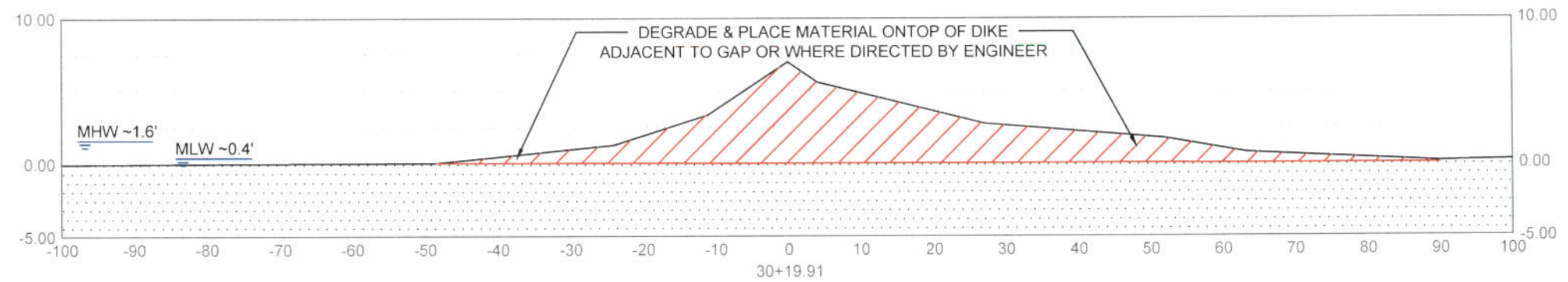
FEDERAL PROJECT NUMBER: TE-0052

APPROVED BY: BRIAN BABIN, P.E.

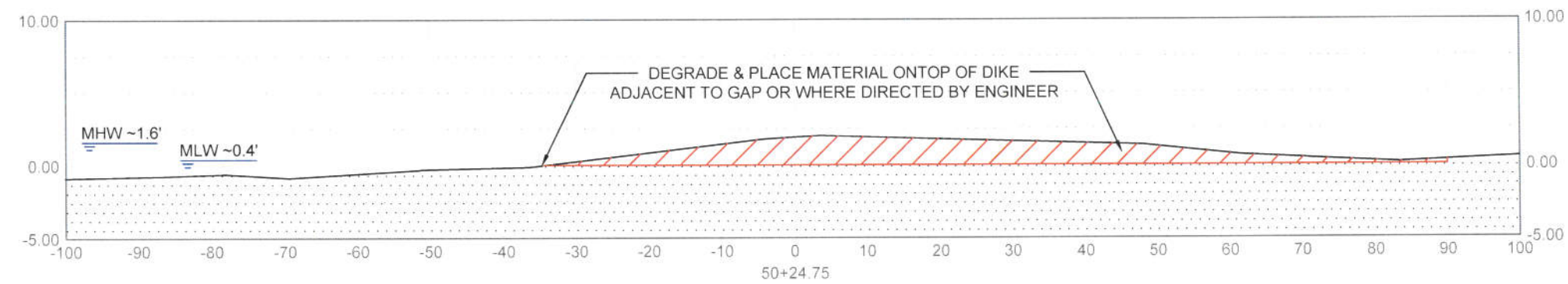
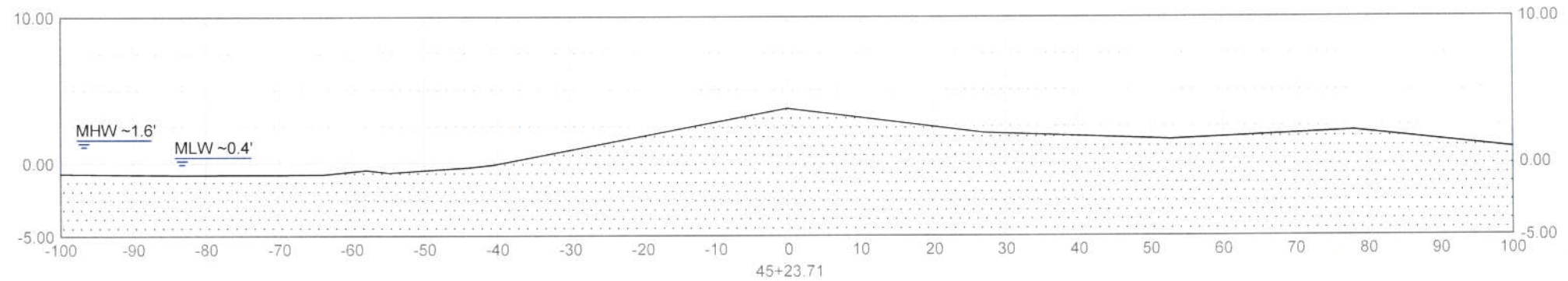
CROSS SECTIONS

DATE: 12/2017

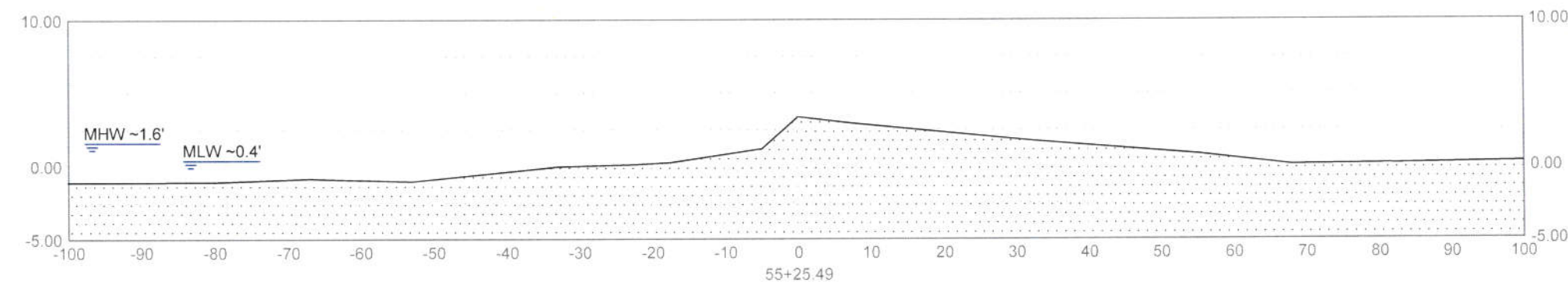
SHEET 5 OF 6





C/L COORDINATES
 X: 3625742.73
 Y: 219658.35
 X: 3625792.65
 Y: 219655.56



C/L COORDINATES
 X: 3627737.81
 Y: 219521.69
 X: 3627789.31
 Y: 219518.47



LEGEND

-  EARTHEN CONTAINMENT TO BE DEGRADED TO 0.0 FT NAVD88
-  EARTHEN CONTAINMENT TO REMAIN

PATH: F:\Engineering\Basins\TE\TE-52\G.2 - 2017 Maintenance Event\C - Engineering & Design\G.2.1.k - Preliminary Design Reports & Plans\Construction Plans

				COASTAL PROTECTION & RESTORATION AUTHORITY THIBODAU REGIONAL OFFICE 1440 TIGER DRIVE, SUITE B THIBODAU, LOUISIANA 70301	WEST BELLE PASS 2018 MAINTENANCE EVENT		CROSS SECTIONS
					STATE PROJECT NUMBER: TE-0052		
					FEDERAL PROJECT NUMBER: TE-0052		DATE: 12/2017
REV.	DATE	DESCRIPTION	BY		DRAWN BY: BEN HARTMAN, E.I	DESIGNED BY: BEN HARTMAN, E.I	APPROVED BY: BRIAN BABIN, P.E.