



Coastal Protection and
Restoration Authority of Louisiana

South Central & South West Louisiana Regional Update

Patrick J. Landry, P.E.

CPRA Operations Division

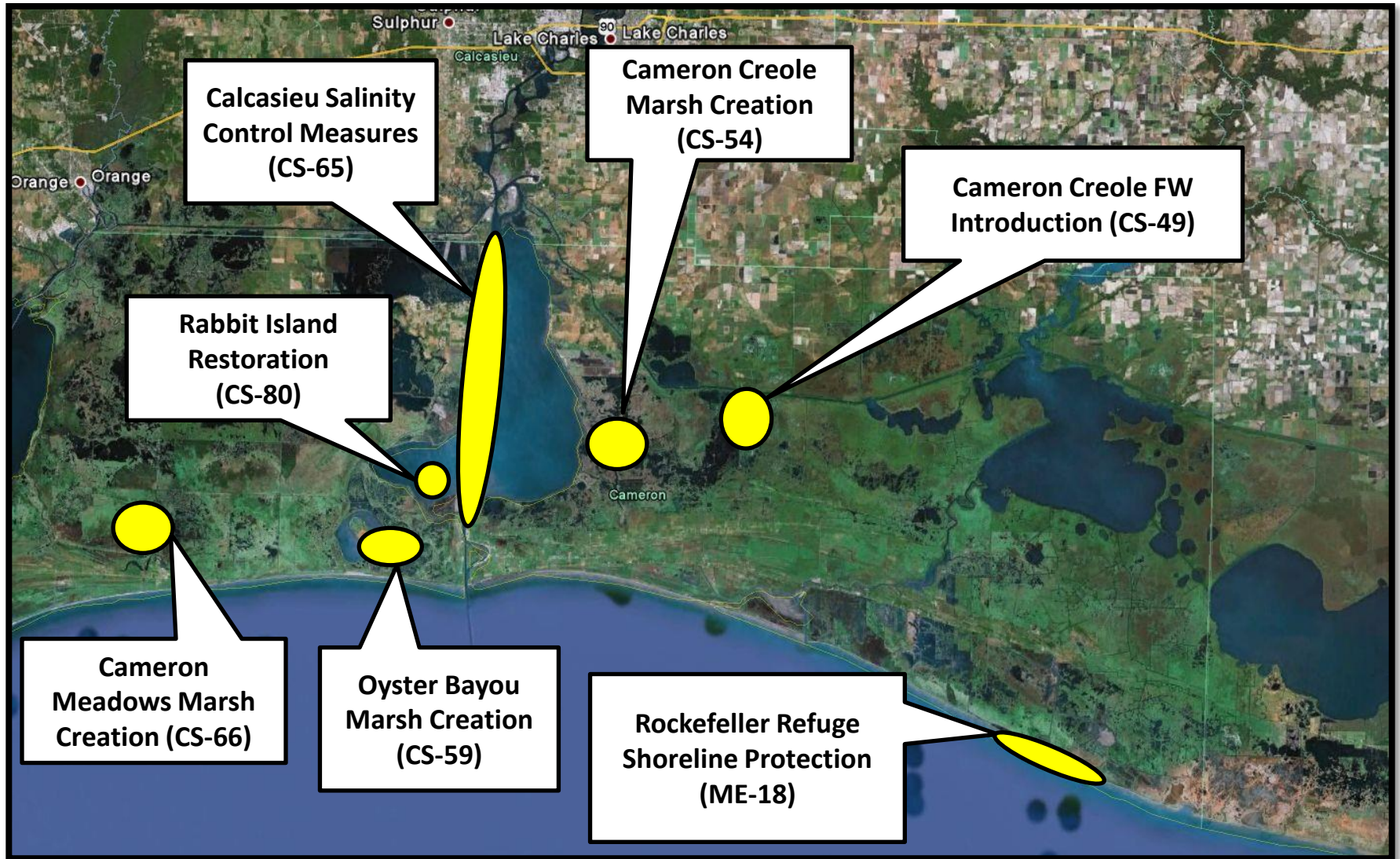
August 16, 2017



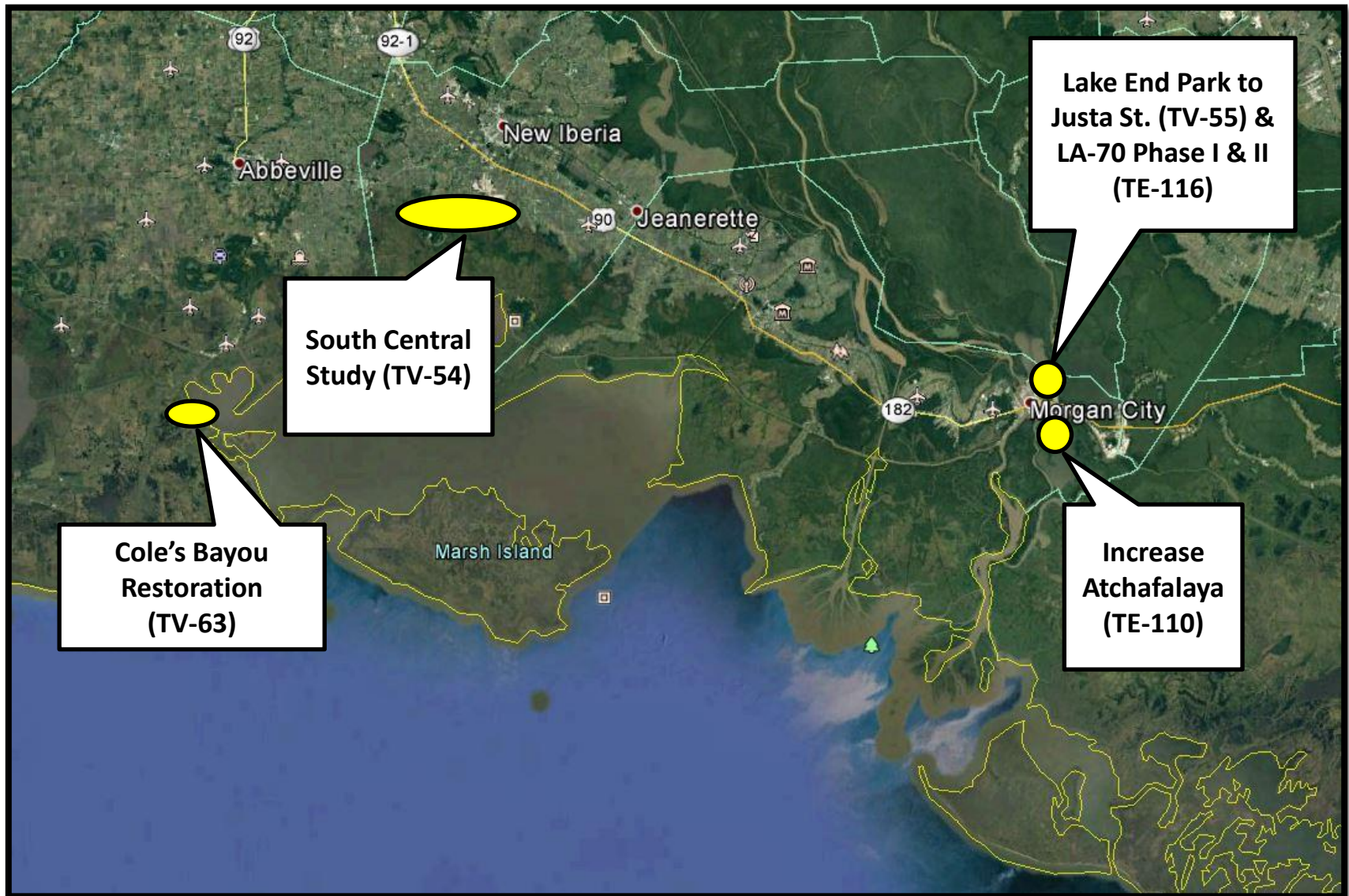
committed to our coast

Louisiana Coastal Protection and Restoration Authority

Calcasieu-Sabine & Mergementau Basin



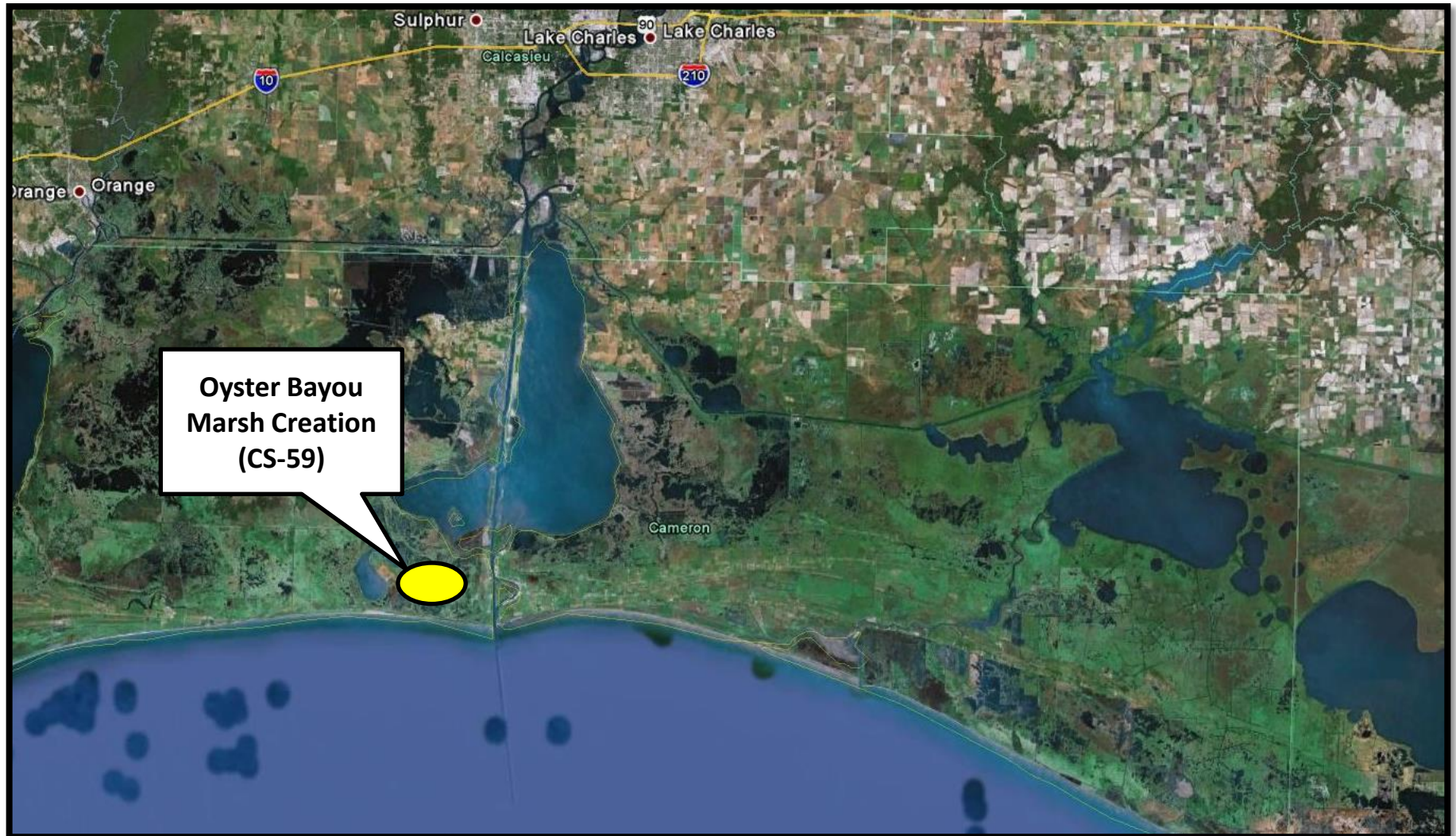
Teche-Vermilion and Terrebonne Basin



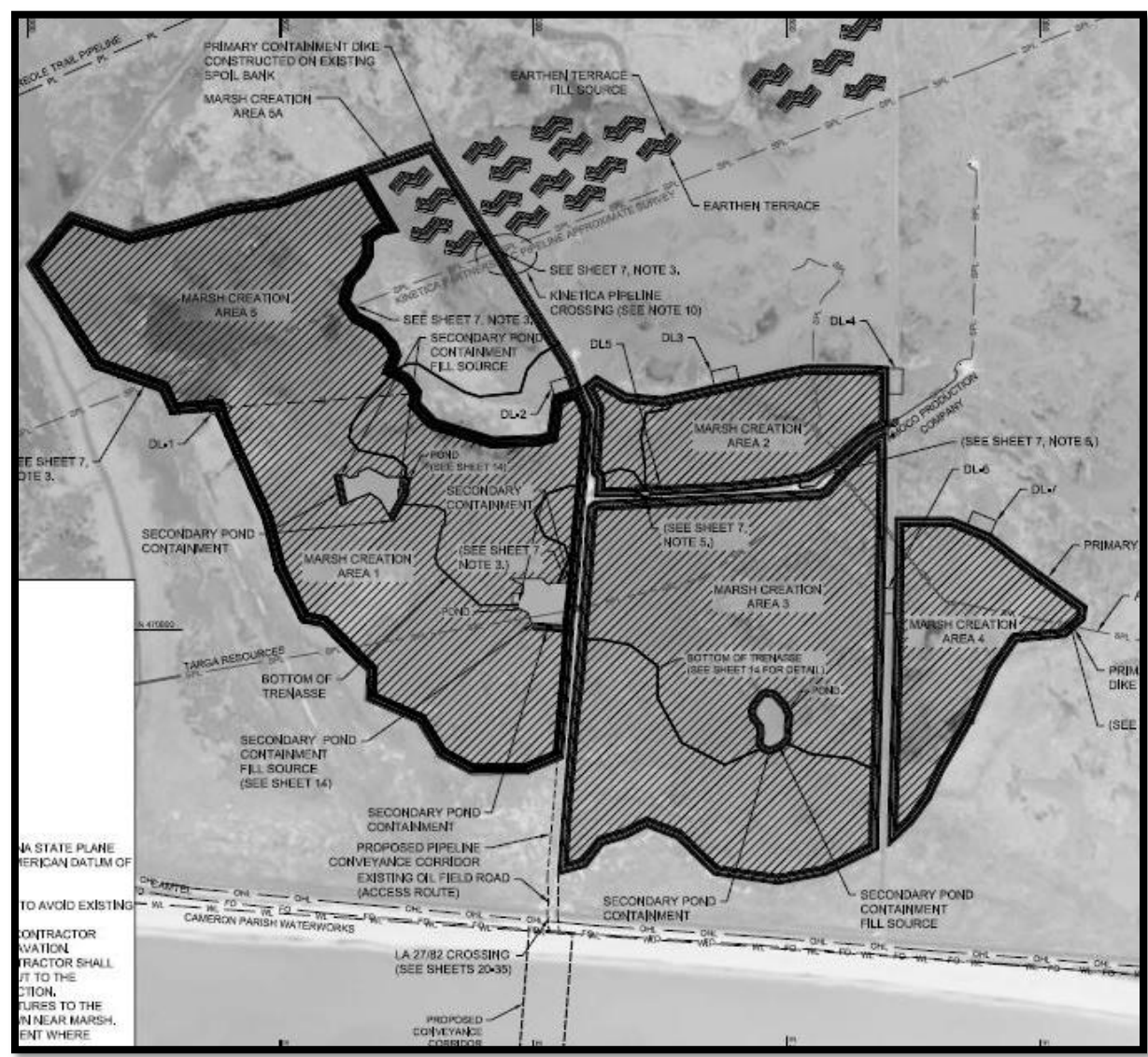
South Central & South West
Louisiana Regional Update

REGIONAL CWPPRA PROJECTS FUNDED FOR CONSTRUCTION PHASE II

Oyster Bayou Marsh Creation (CS-59)



Oyster Bayou Marsh Creation (CS-59)



Oyster Bayou Marsh Creation (CS-59)



Oyster Bayou Marsh Creation (CS-59)



Oyster Bayou Marsh Creation (CS-59)



Oyster Bayou Marsh Creation (CS-59)

- **Project Features:**

- 510+ acres of Marsh Creation
- 14,000 ft. of Terraces

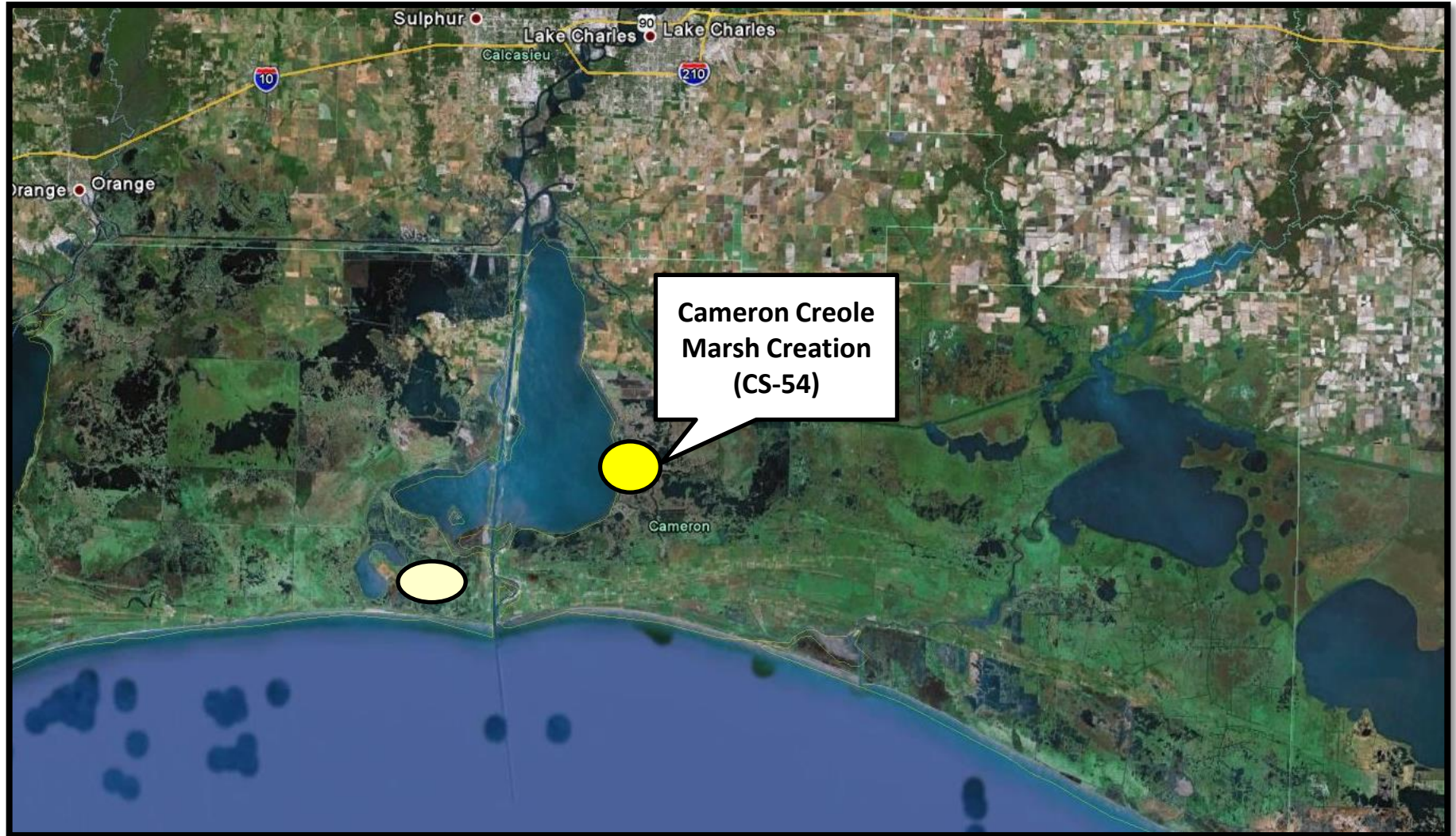
- **Construction:**

- Total Cost – \$23.8 M
- Contractor – Weeks Marine

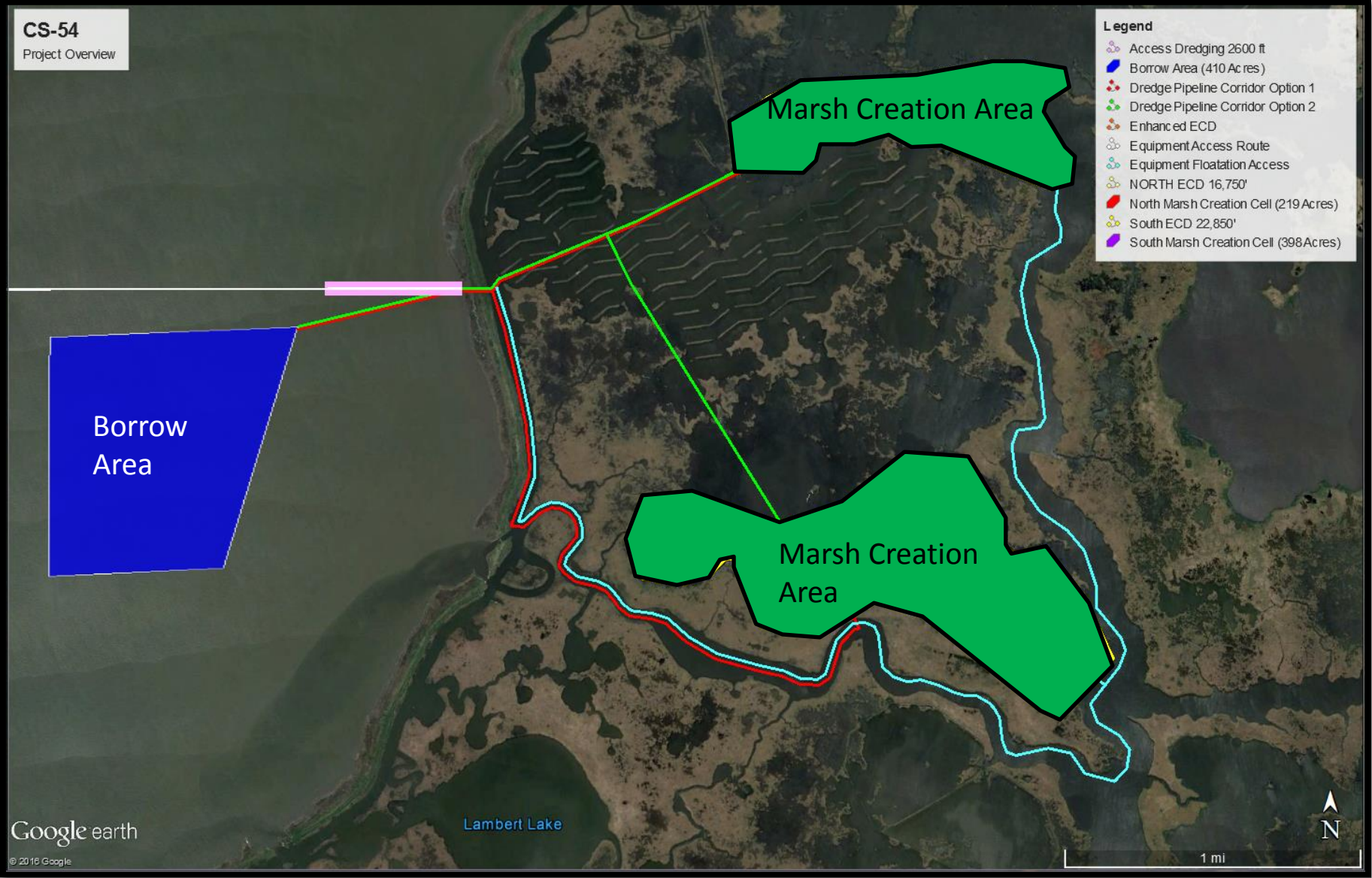
- **Project Status:**

- Construction Start – Dec.2016
- Containment – 40,000 ft. of earthen dikes constructed
- Dredging – Avg. discharge rate of 50,000 CY per day
- Construction Completion – Dec. 2017

Cameron Creole Marsh Creation (CS-54)



Cameron Creole Marsh Creation (CS-54)



Cameron Creole Marsh Creation (CS-54)

- **Project Features:**

- 617 acres of Marsh Creation
 - 219 acres on Miami Corp & 398 acres on Cameron Prairie

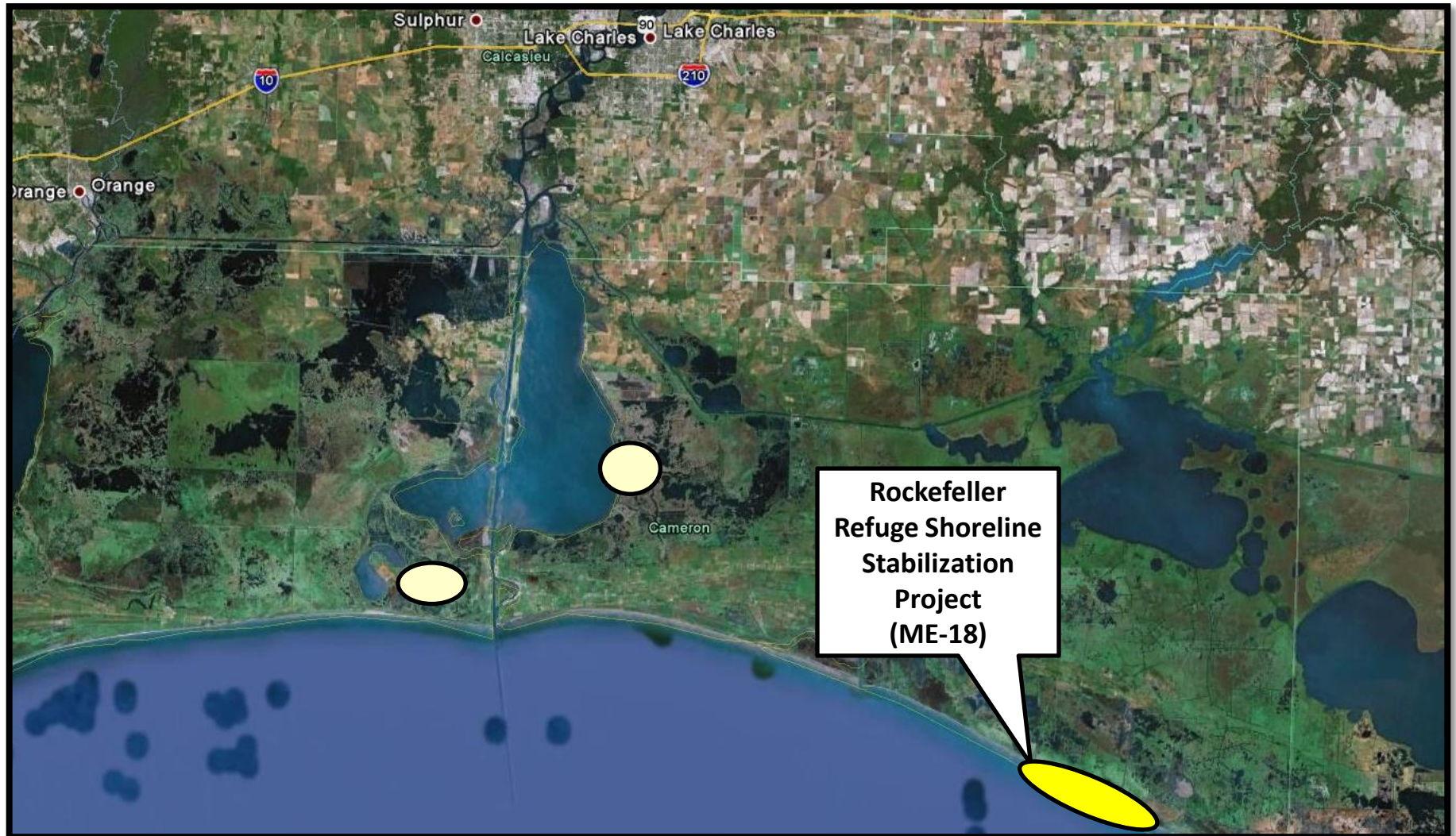
- **Construction:**

- Total Cost – \$8.2 M
- Contractor – Apollo Environmental Strategies

- **Project Status:**

- Project Bid Opening: June 28, 2017
- NTP & Pre-Construction Meeting: Sept. 13, 2017
- Construction Completion: Late 2018

Rockefeller Refuge Shoreline (ME-18)



Rockefeller Refuge Shoreline (ME-18)



Rockefeller Refuge Shoreline (ME-18)



Rockefeller Refuge Shoreline (ME-18)

- **Project Features:**

- Project Located near Joseph's Harbor Canal
- Segmented Breakwaters with Lightweight Aggregate Core
- Breakwaters Positioned on -2.0' contour
- Project Length – Approximately 3 Miles

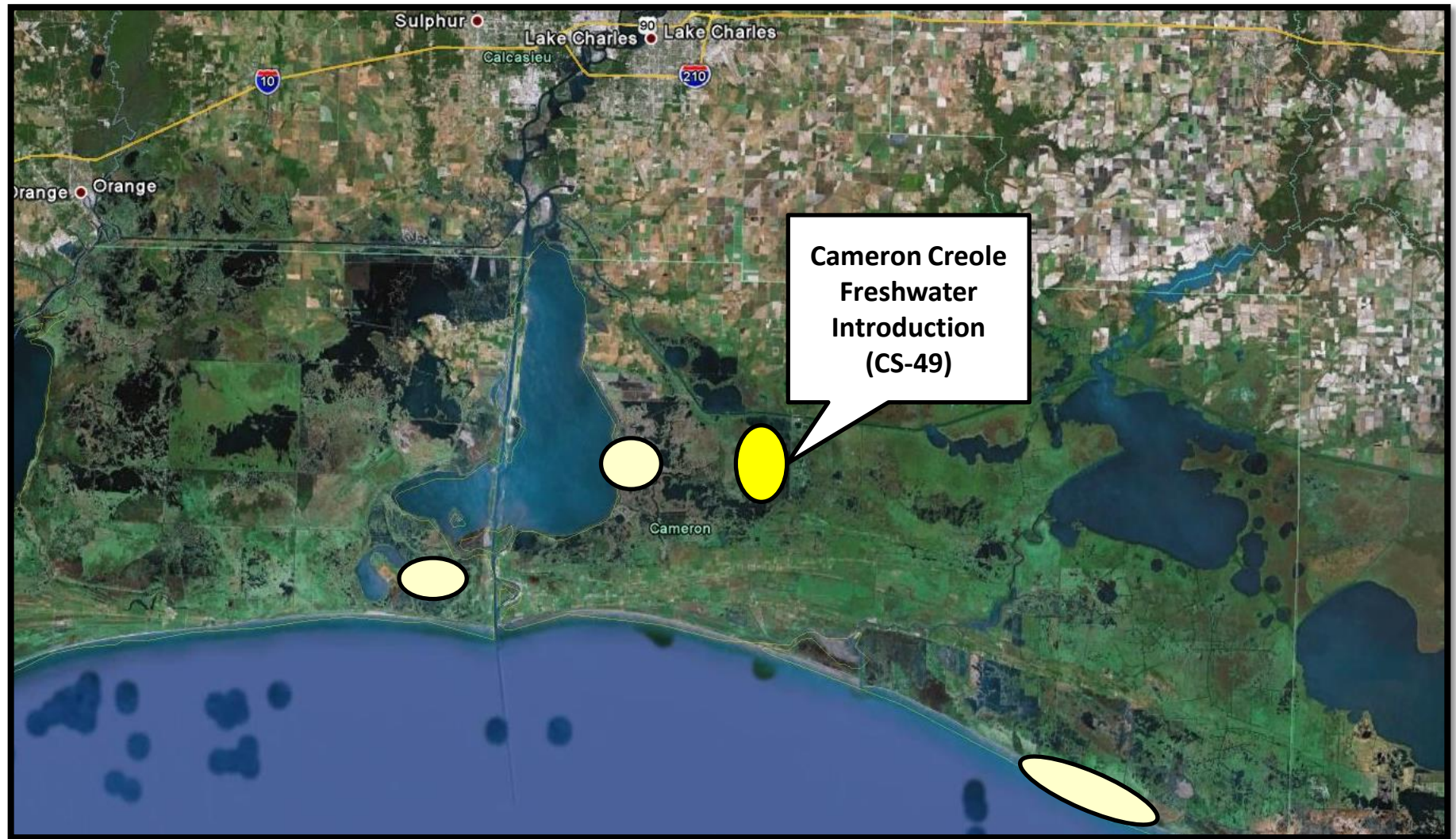
- **Construction:**

- Total Cost – \$18.9 M
- Contractor – Leblanc Marine

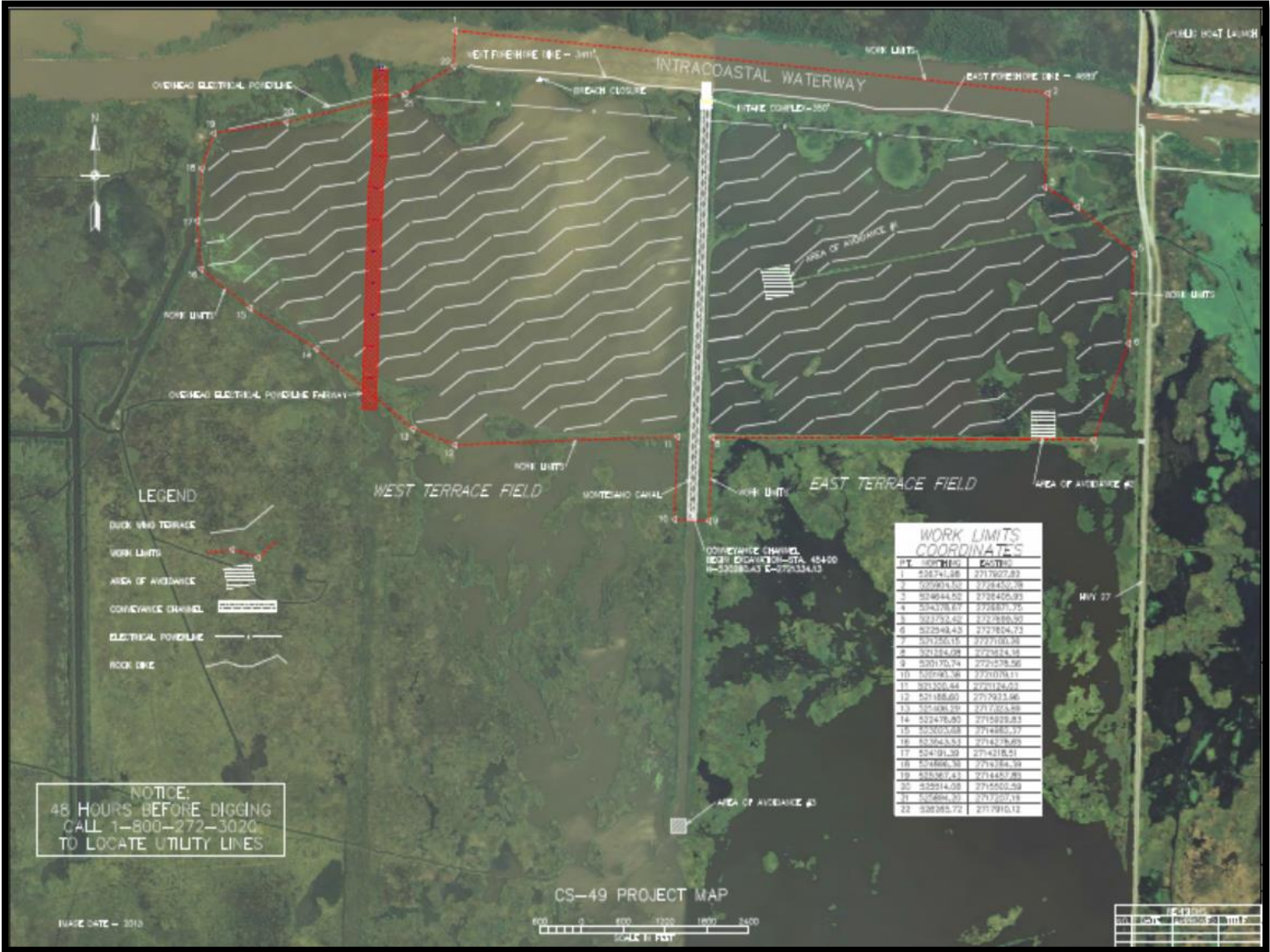
- **Project Status:**

- Project Bid Opening: July 6, 2017
- Anticipate Construction Start: Oct. 2017
- Construction Completion: Early 2019

Cameron Creole FW Introduction (CS-49)



Cameron Creole FW Introduction (CS-49)



Cameron Creole FW Introduction (CS-49)

- **Project Features:**

- Placement of sheet pile structure in Monsanto canal (8 - 5' square openings)
- 8,000 feet of GIWW Foreshore Rock Dike
- 120,000 linear feet of terracing

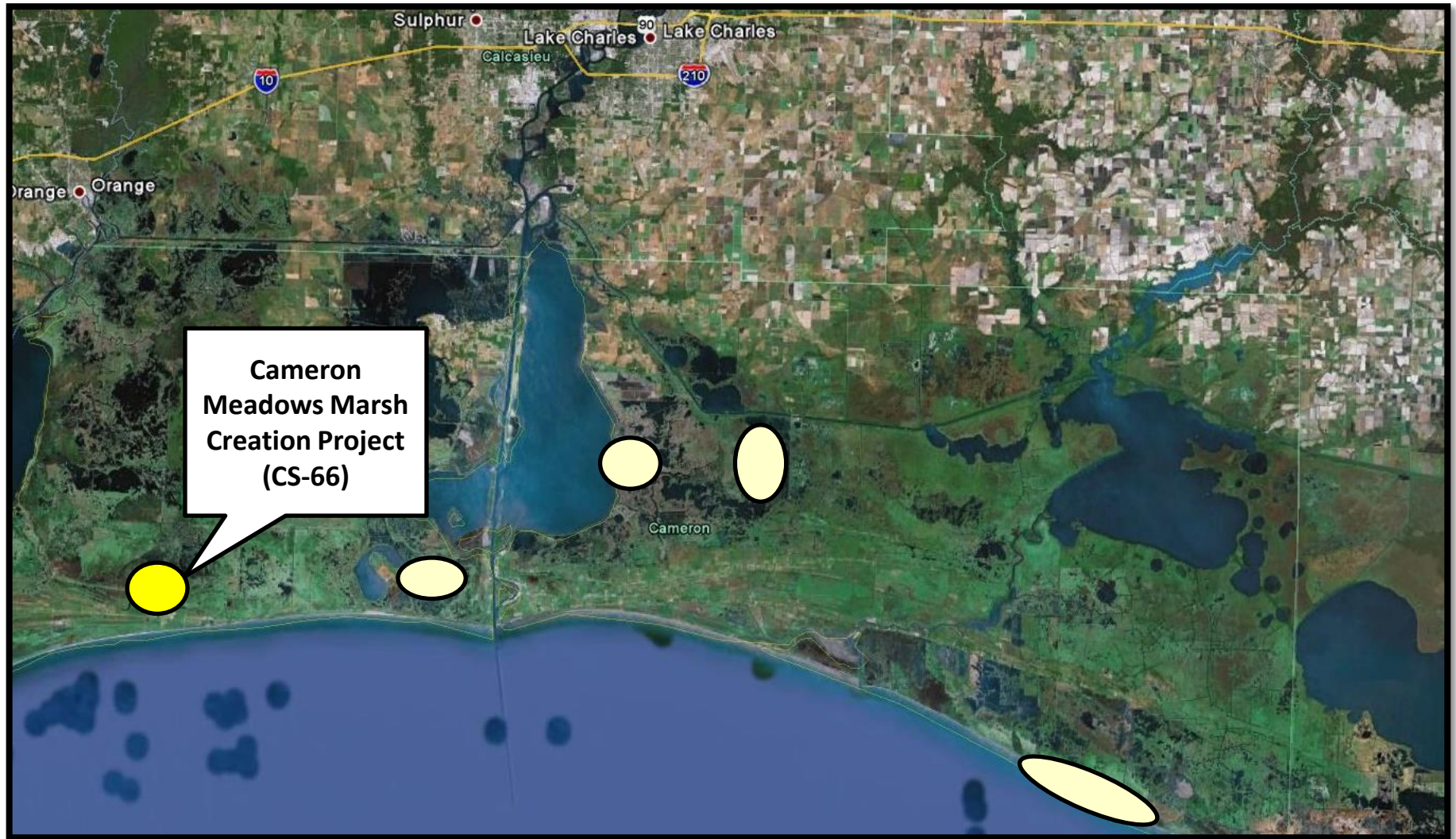
- **Construction:**

- Total Cost – \$15M (Estimated)

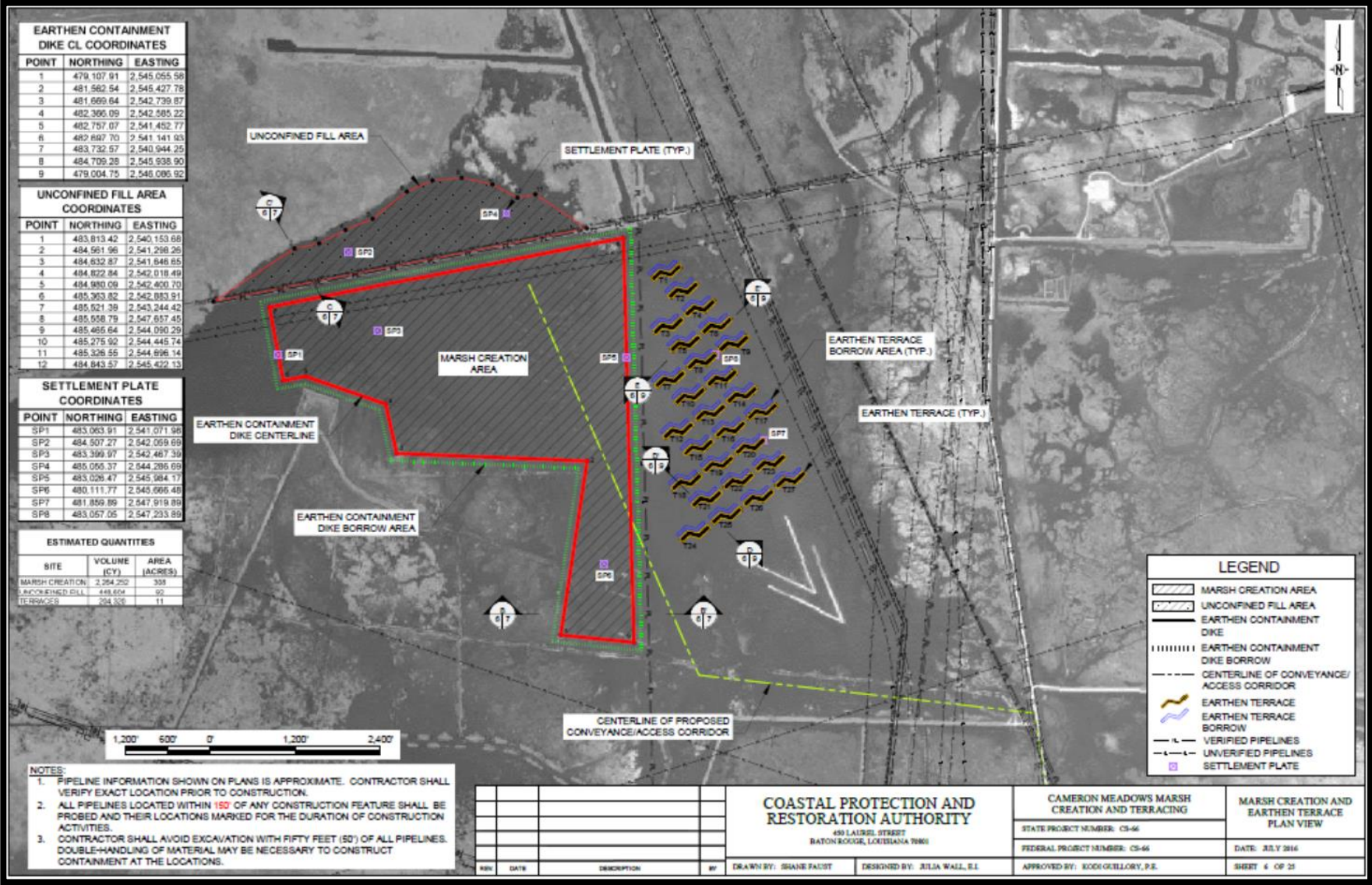
- **Project Status:**

- Project is at 95% design level
- NRCS is finalizing the design features
- ***Will request construction funds at December 2017 CWPPRA Technical Committee Meeting***

Cameron Meadows Marsh Creation (CS-66)



Cameron Meadows Marsh Creation (CS-66)



Cameron Meadows Marsh Creation (CS-66)

- **Project Features:**

- 400 acres of marsh creation
- 12,150 linear feet of terraces (27 terraces)
- Offshore Borrow Area – 5 miles south of the project

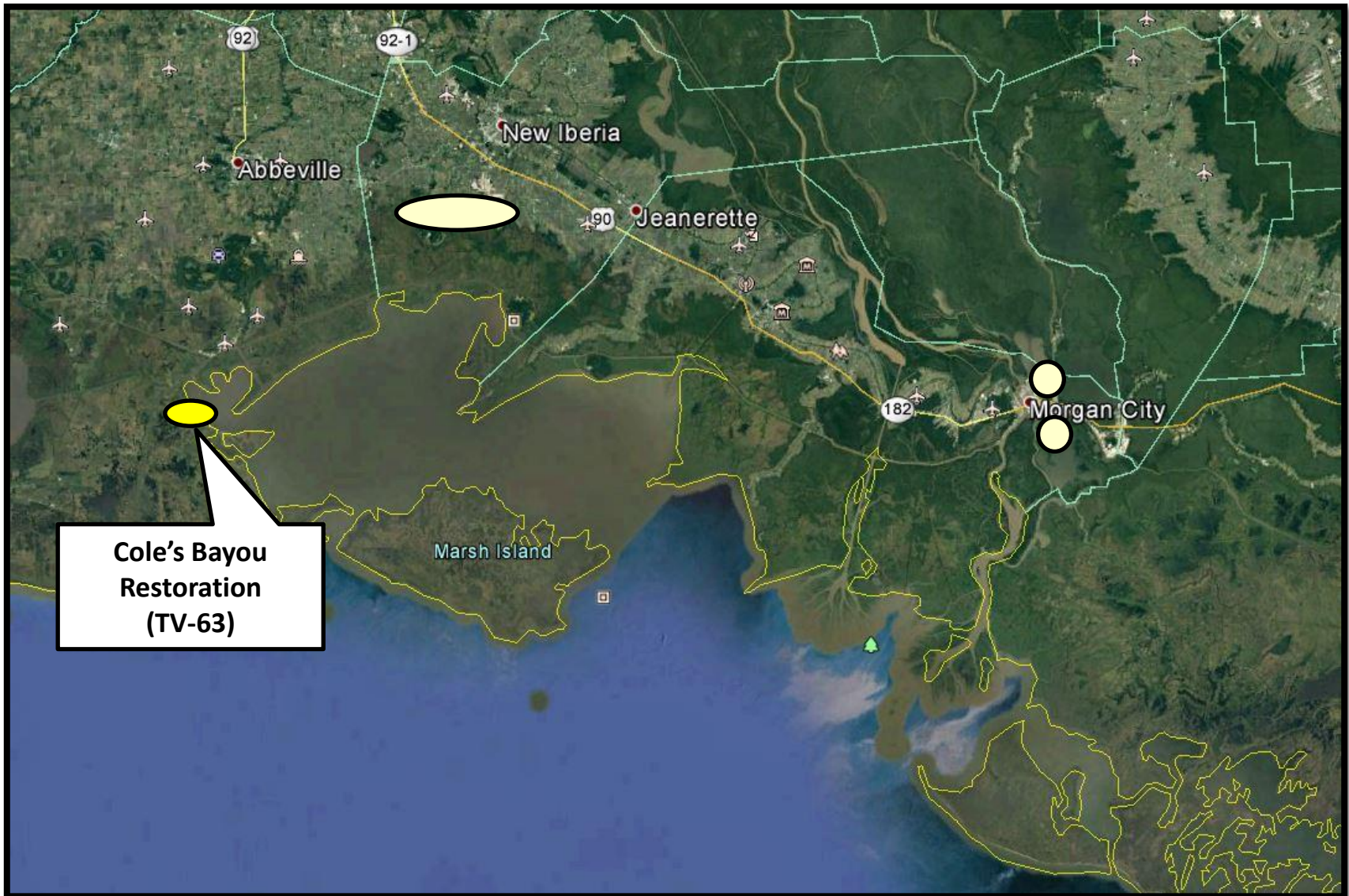
- **Project Costs:**

- Total Cost – \$38.5M (Fully Funded Project Costs)

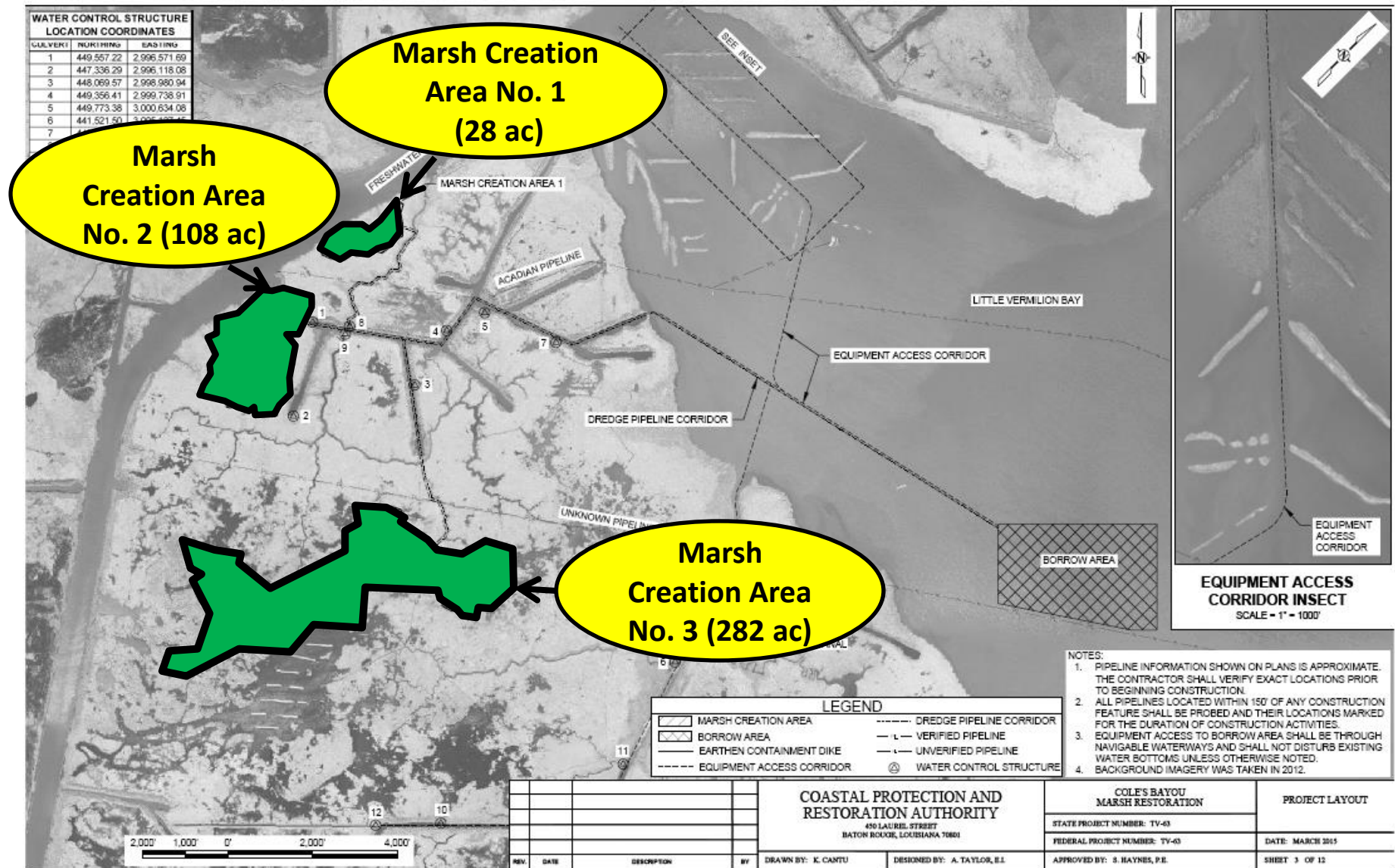
- **Project Status:**

- CWPPRA funding approved: January 2017
- Securing land rights now
- Permitting to begin: Fall 2017
- Plan to be in Construction in late 2018

Coles Bayou Restoration Project (TV-63)



Coles Bayou Restoration Project (TV-63)



Coles Bayou Restoration Project (TV-63)

- **Project Features:**

- Benefit 418 acres Marsh Creation
- Inshore Borrow from Vermilion Bay
- Increase freshwater and sediment inflow into interior wetlands by installing a series of culverts (22 – 42” culverts @ 9 locations)

- **Construction Costs:**

- Total Cost – \$20M (Estimated)

- **Project Status:**

- Plans and specs are being finalized
- Anticipate Project Bid: late 2017
- Anticipate Construction start: early 2018

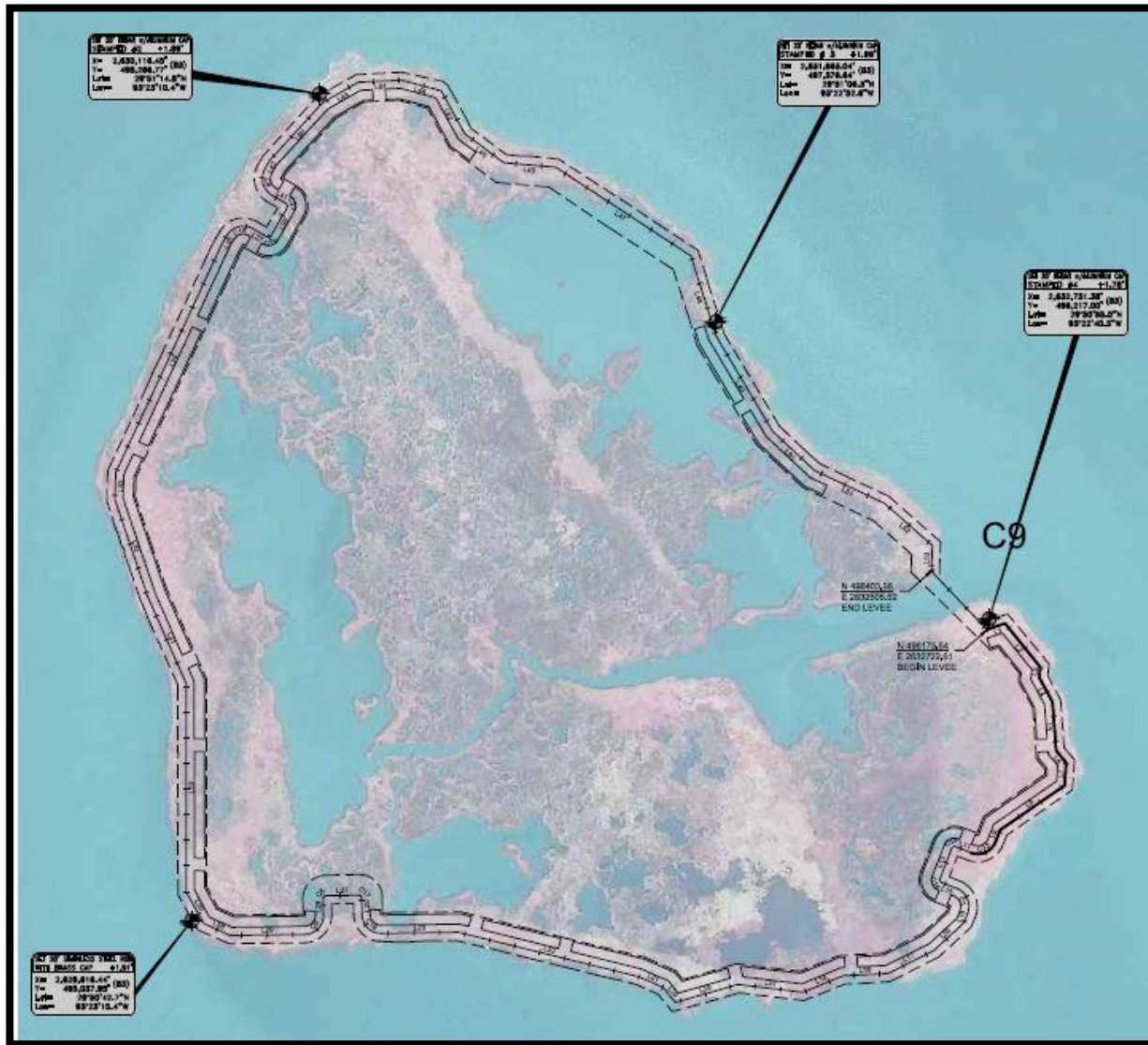
South Central & South West
Louisiana Regional Update

REGIONAL NRDA PROJECTS

Rabbit Island Restoration (CS-80)



Rabbit Island Restoration (CS-80)



Rabbit Island Restoration (CS-80)

- **Project Features:**

- Restore Bird Habitat
- Benefit 200+ acres Marsh Creation
- Additional Features includes Dunes to enhance Bird Habitat and Shoreline Protection on NE Side of Island

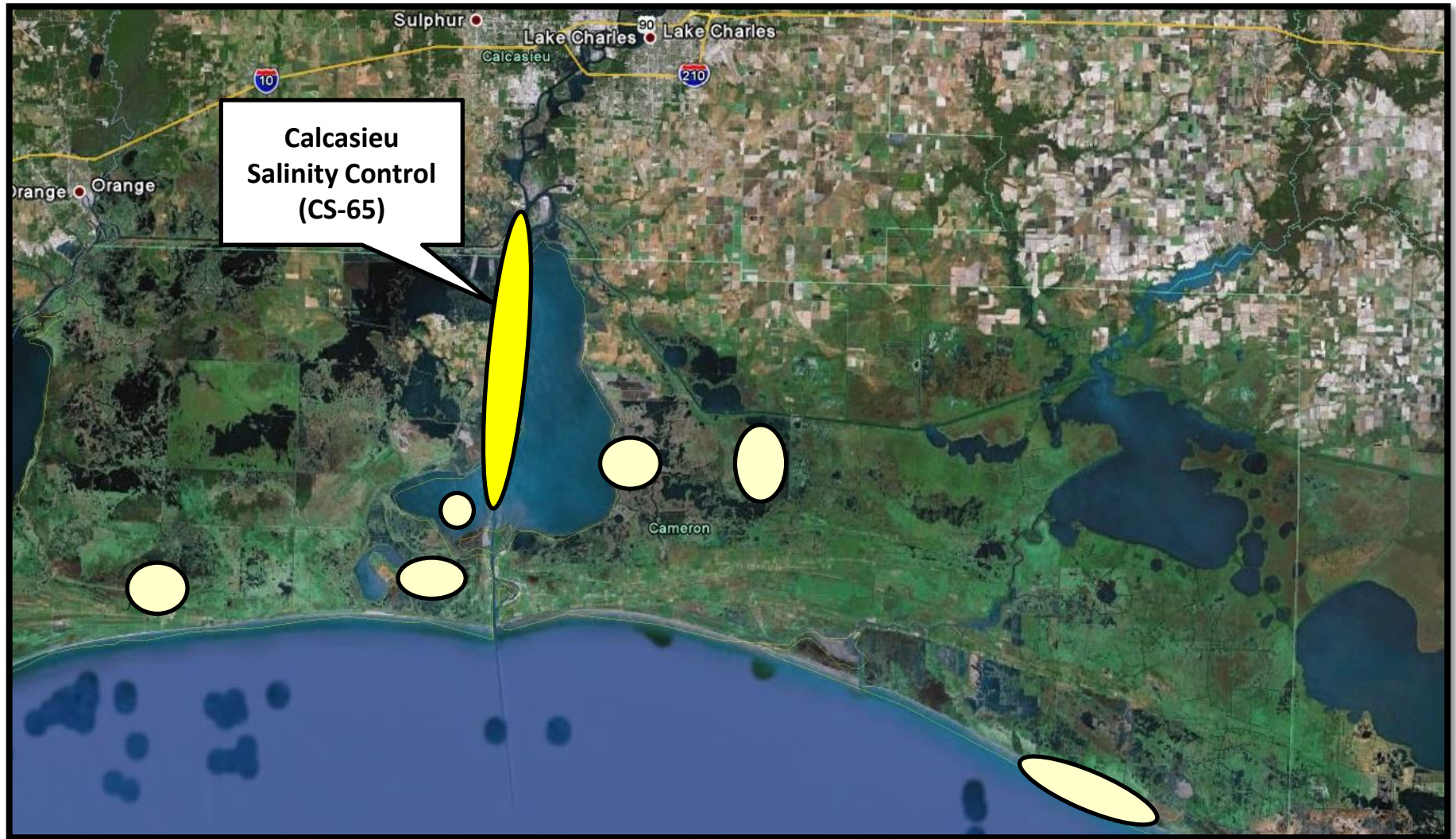
- **E&D and Project Status :**

- E&D NTP has been issued to Royal on Aug. 2017
- Data Collection and Preliminary Design to begin soon

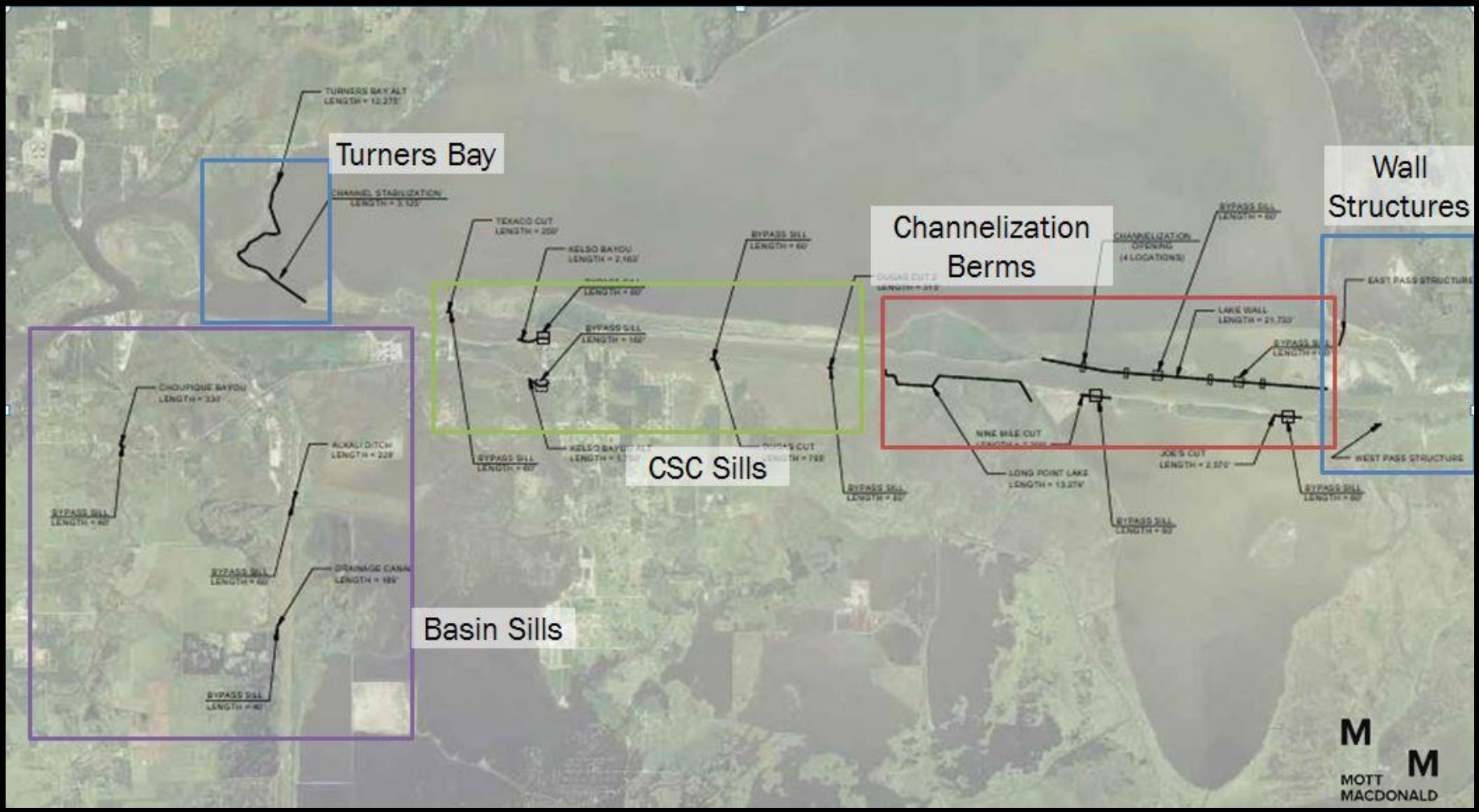
South Central & South West
Louisiana Regional Update

REGIONAL RESTORE PROJECTS

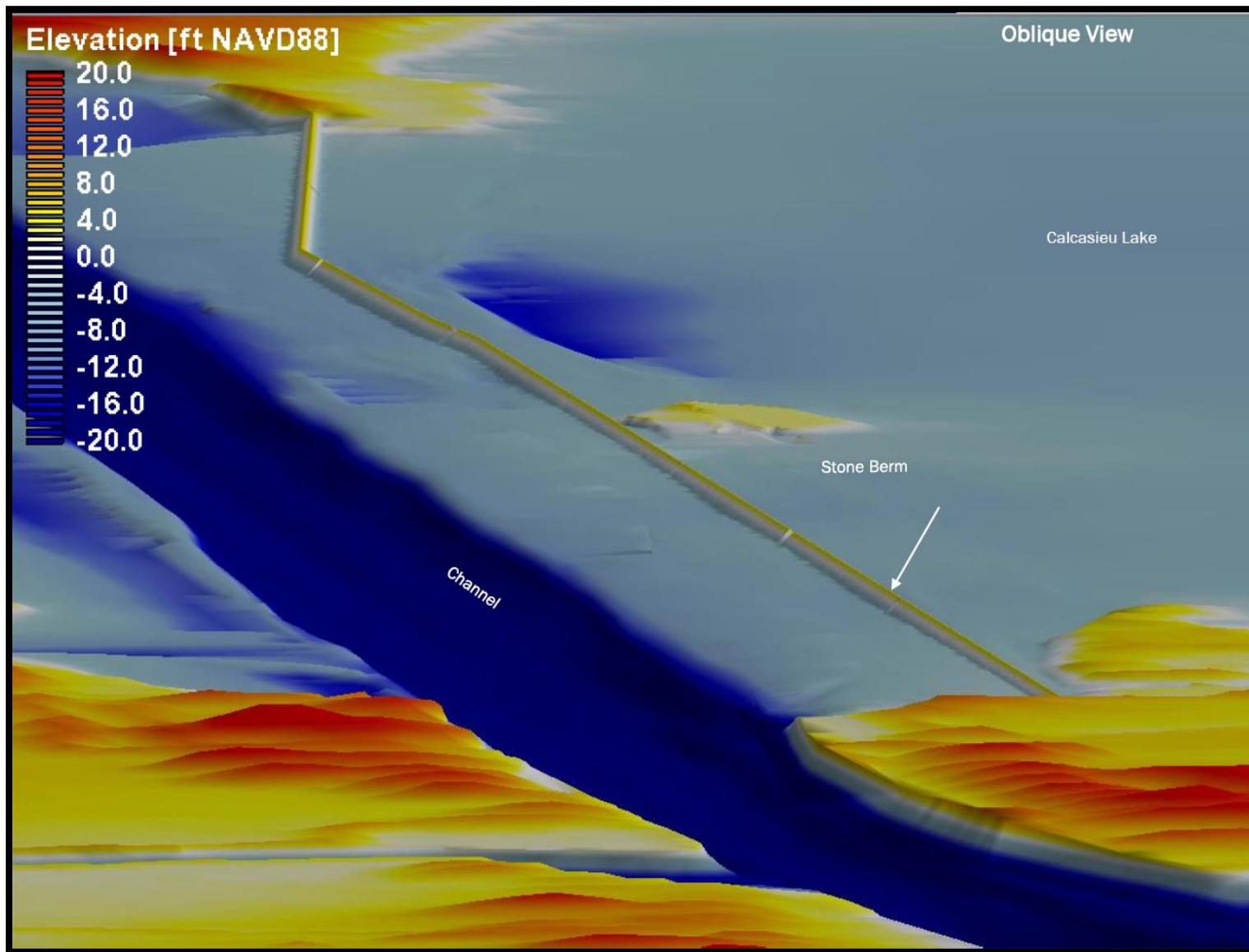
Calcasieu Salinity Control (CS-65)



Calcasieu Salinity Control (CS-65)



Calcasieu Salinity Control (CS-65)



Calcasieu Salinity Control (CS-65)

- **Project Features:**

- Salinity Control Benefit 12,385 acres (MP '17)
- Approximately 14 structures along ship channel & connecting waterways
- Project is 100% funded with RESTORE ACT (Bucket 1)

- **E&D and Project Status:**

- Engineering & Design: \$36M (Estimated in RESTORE MYIP)
- Data Collection, Modeling and Design Underway
- 15% Design; Outreach & Engagement - Early 2018

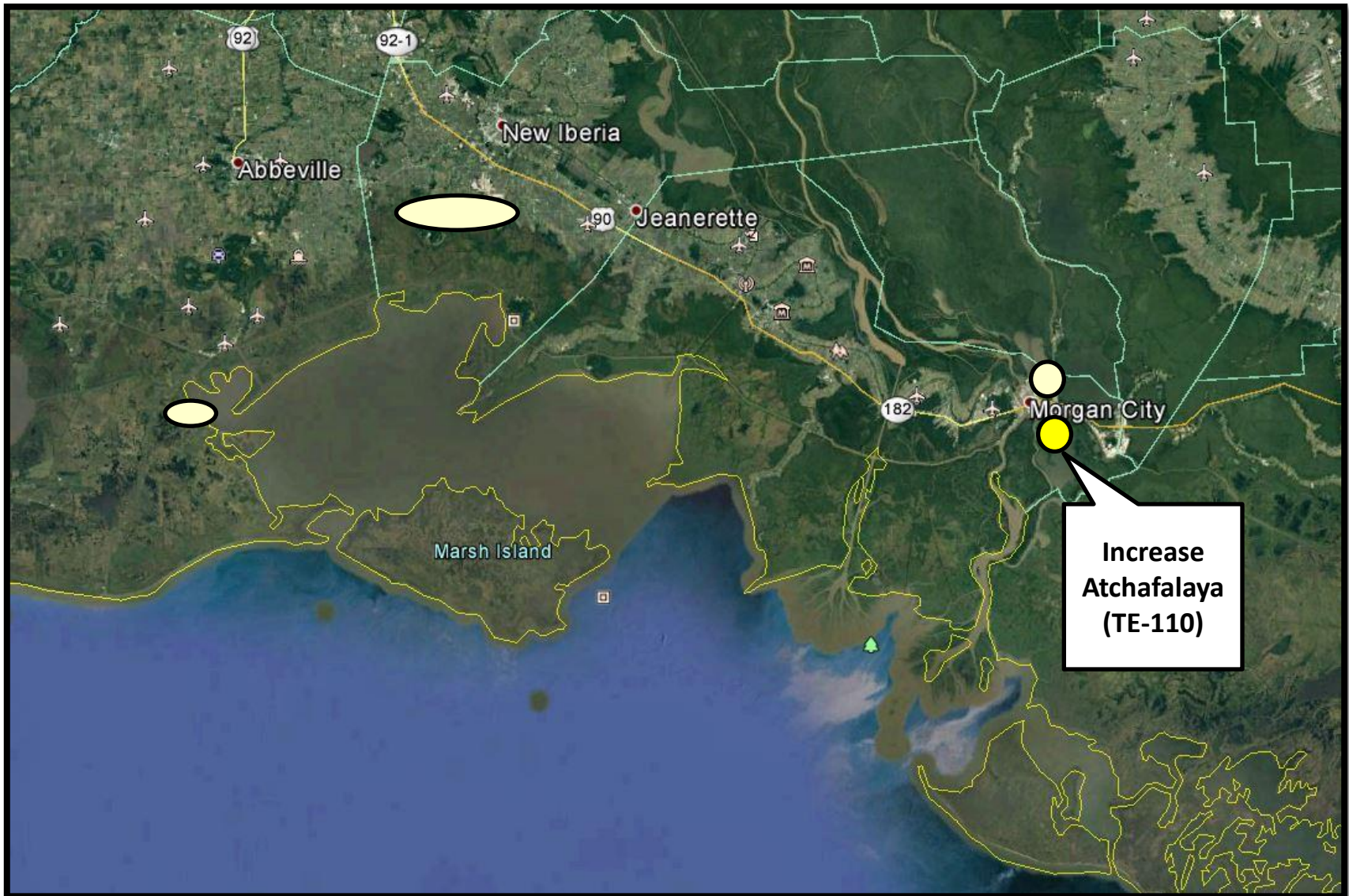
- **Construction:**

- Construction: \$262.8M (Estimated in RESTORE MYIP)

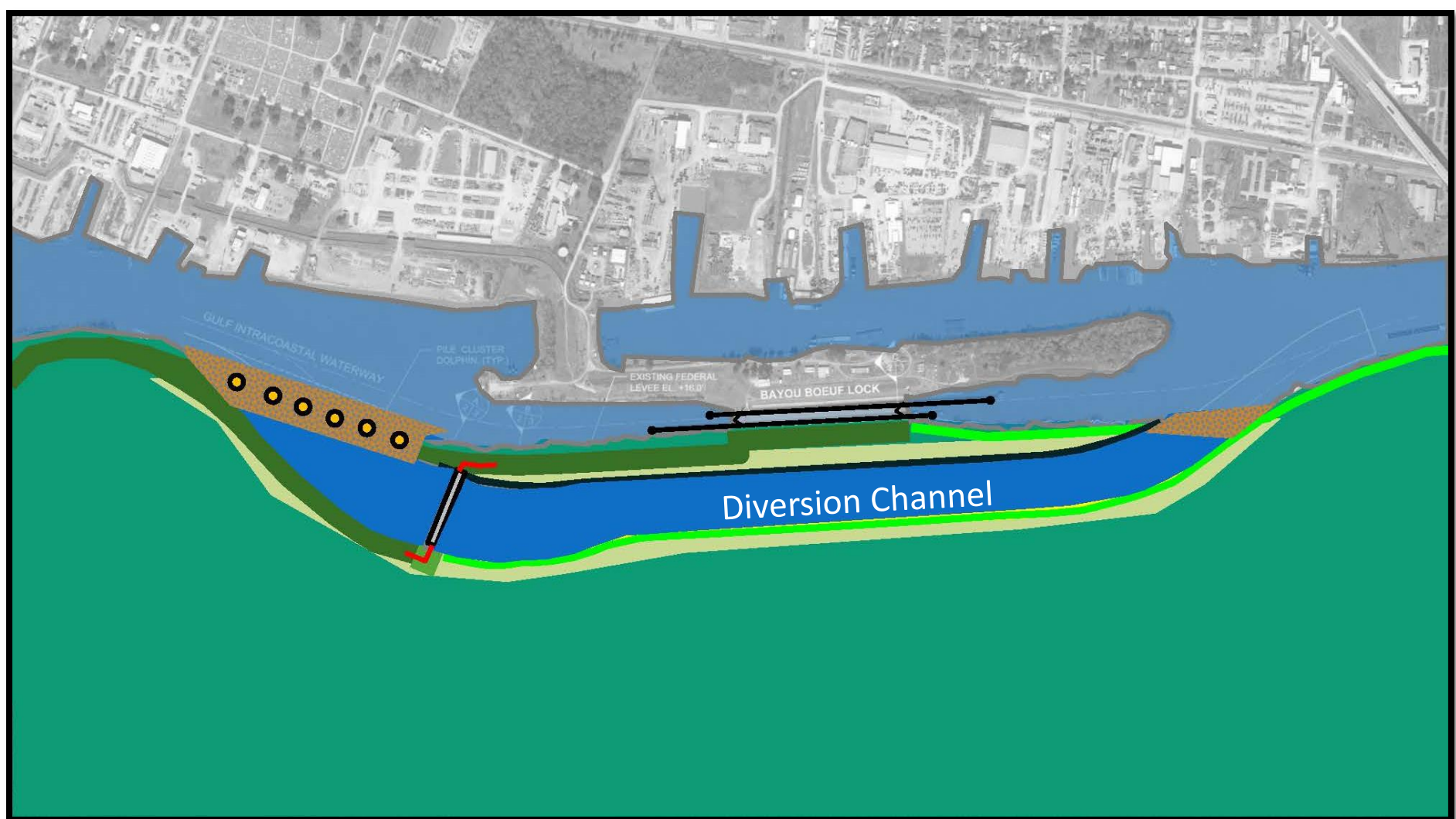
South Central & South West
Louisiana Regional Update

REGIONAL NFWF PROJECTS

Increase Atchafalaya Flow to TE (TE-110)



Increase Atchafalaya Flow to TE (TE-110)



Increase Atchafalaya Flow (TE-110)

- **Project Features:**

- The project is projected to prevent the loss of 13,000 to 18,000 acres over 50 years, depending on the relative sea level rise scenario analyzed. Land loss prevention is concentrated in areas around Houma
- Diversion Channel in the vicinity of Bayou Boeuf Lock
- Dredging of the GIWW between Bayou Chene and Bayou Boeuf
- Hydrologic Modifications to distribute water to target areas

- **E&D and Project Status:**

- Nearing end of 15% design phase

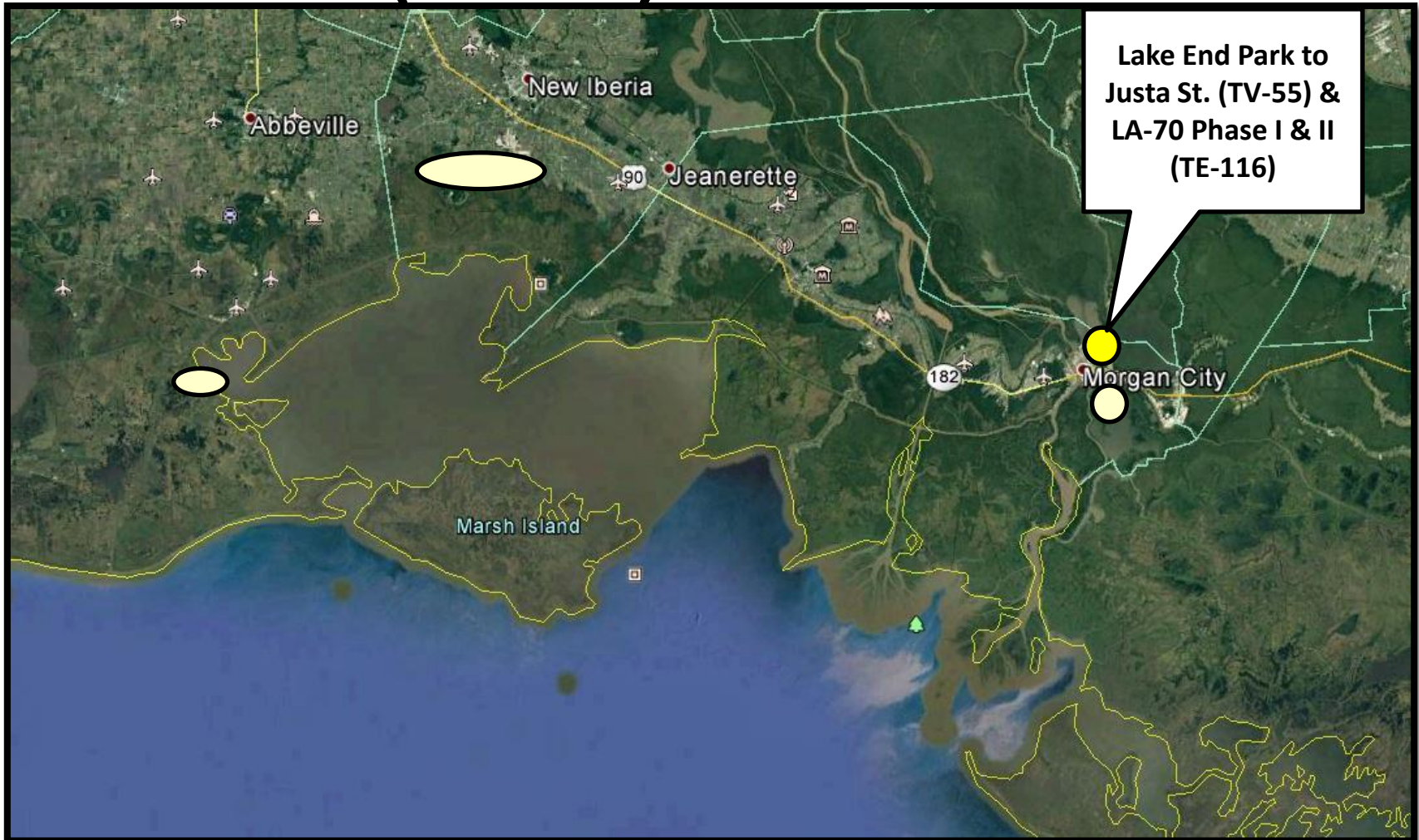
- **Construction:**

- Construction: \$400 M (Estimated)

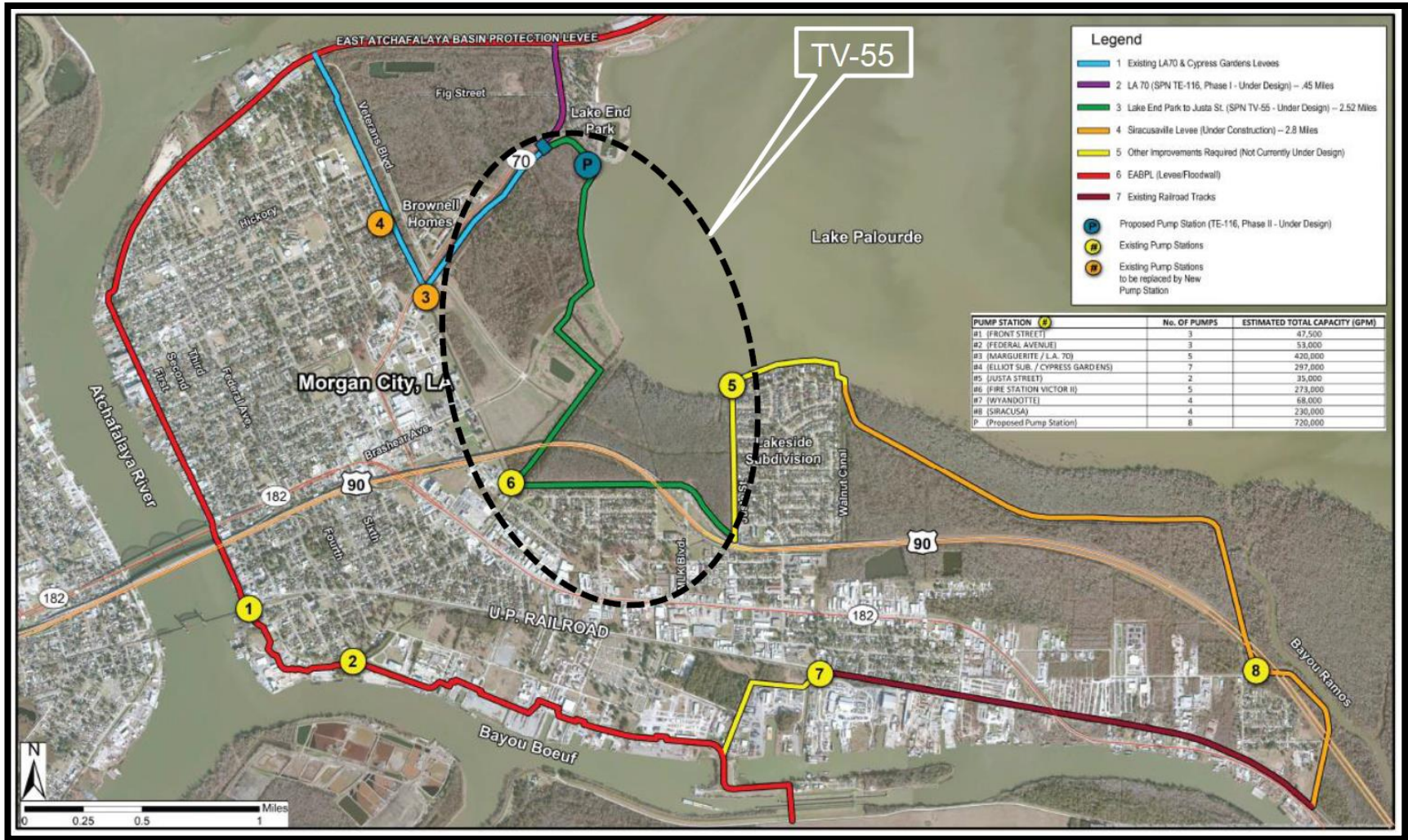
South Central & South West
Louisiana Regional Update

ADDITIONAL REGIONAL EFFORTS

Lake End to Justa Street (TV-55) & LA-70 Phase I and II (TE-116)



Lake End to Justa Street (TV-55)



Lake End to Justa Street (TV-55)

- **Project Features:**

- Increase level of protection
- Raise 2.52 miles of levee. Elevation varies from +8.5' to +10'

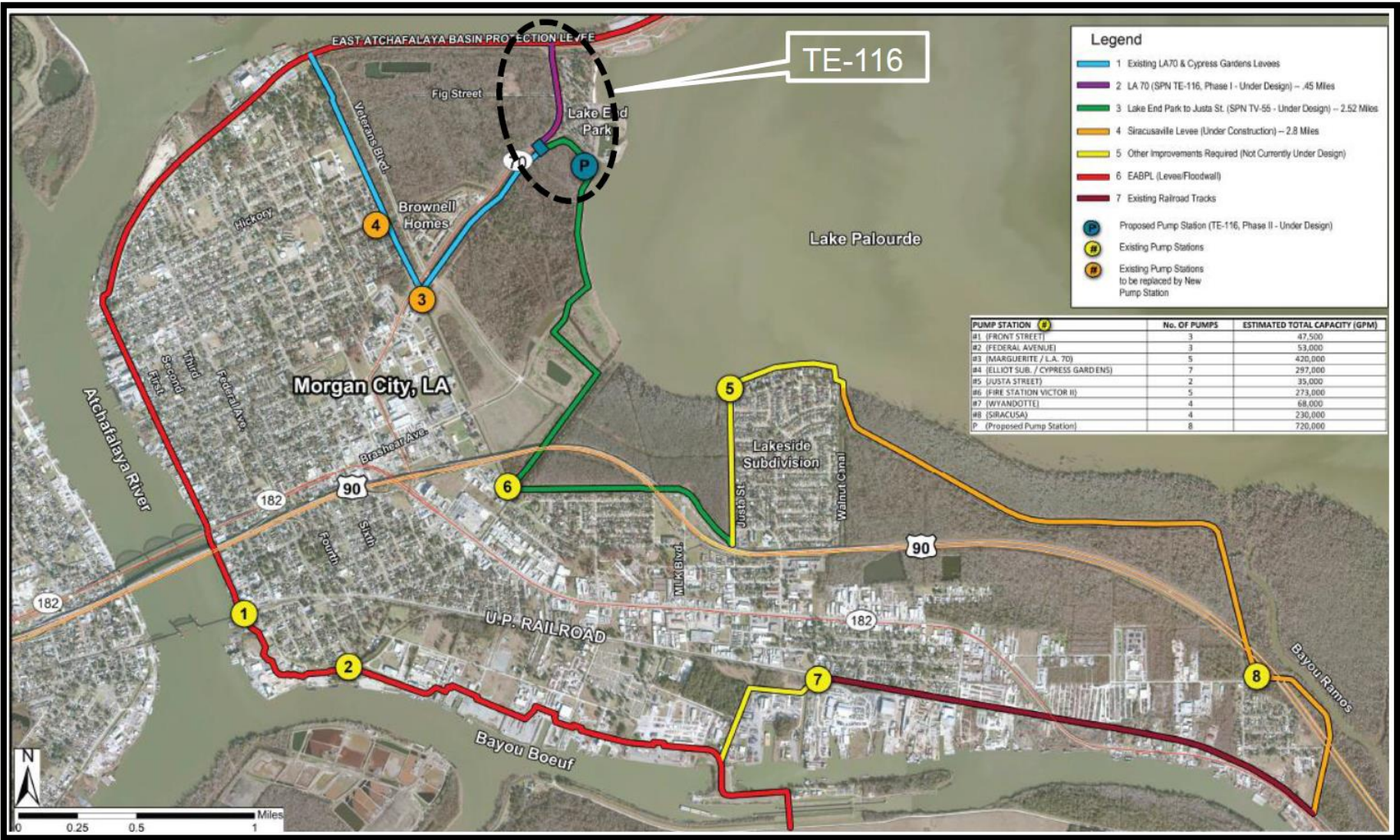
- **Project Status:**

- Currently under construction. NTP issued April 2017
- Construction completion expected in 1st Quarter 2018

- **Project Cost:**

- Total Project Cost: \$11.14M
- CPRA's contribution \$6.2M

LA 70 Phase I & Phase II (TE-116)



Phase I - LA 70 (TE-116)

- **Project Features:**

- Increase level of protection
- Raise 2,100 feet of LA 70 to elevation +8.5'

- **Project Status:**

- Project was Bid on July 18, 2017
- Drainage District No. 2 is preparing to award contract
- Construction NTP September 2017
- Construction completion expected in 3rd Quarter 2018

- **Project Cost:**

- Total Project Cost: \$3.1M
- CPRA's contribution \$2.7M

Phase II-Pump Station & Drainage (TE-116)

- **Project Features:**

- Install new PS and associated drainage improvements
- New 1600 cfs PS and water control structure

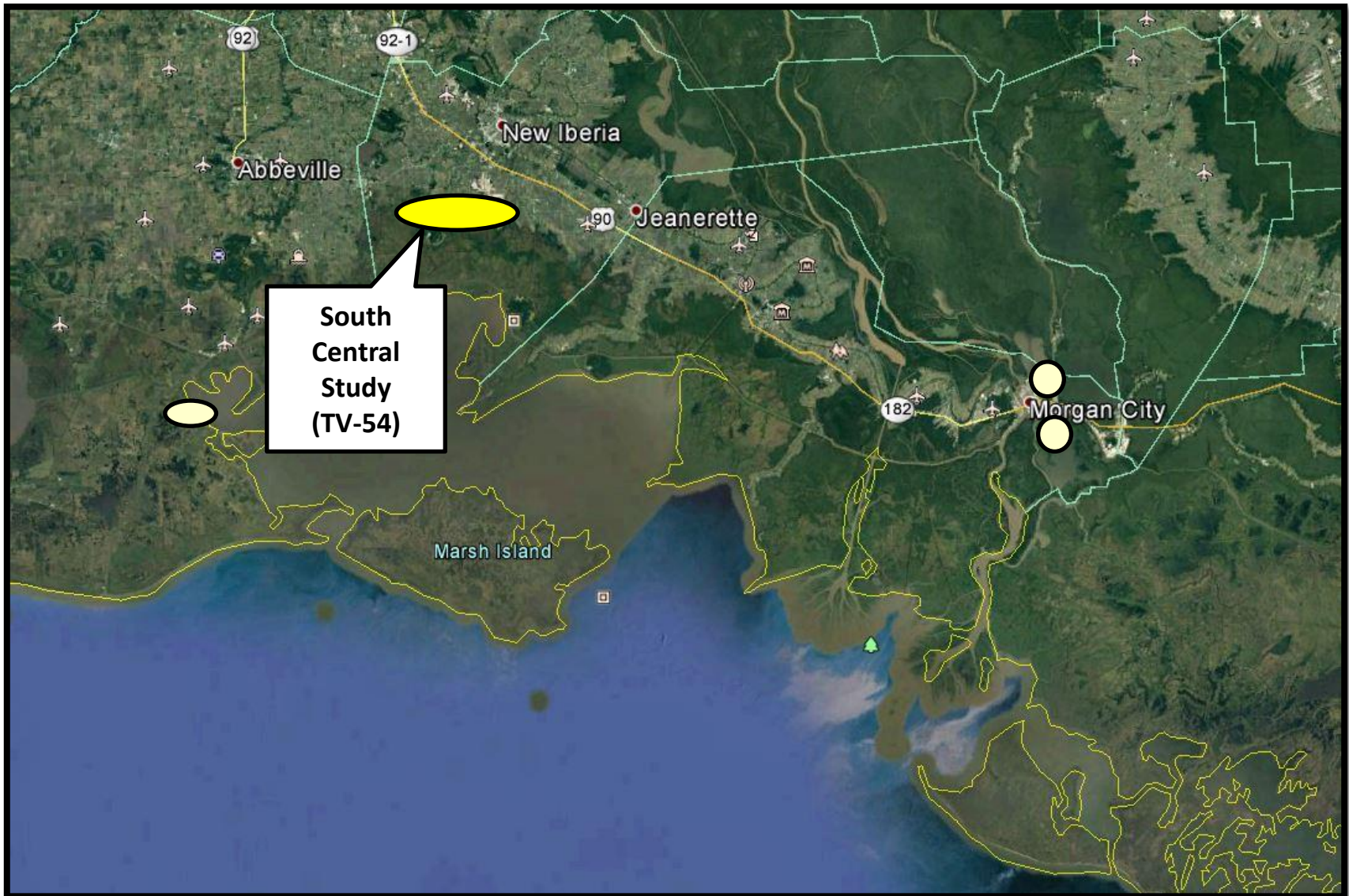
- **Project Status:**

- Using CMAR pilot program to select Contractor
- Drainage District No. 2 just bonded out \$6.38M
- Funds will be available in the near future.

- **Project Cost:**

- Total Construction Cost: \$6.8M (Estimated)
- E&D Cost: \$480K

South Central Coastal Plan (TV-54)

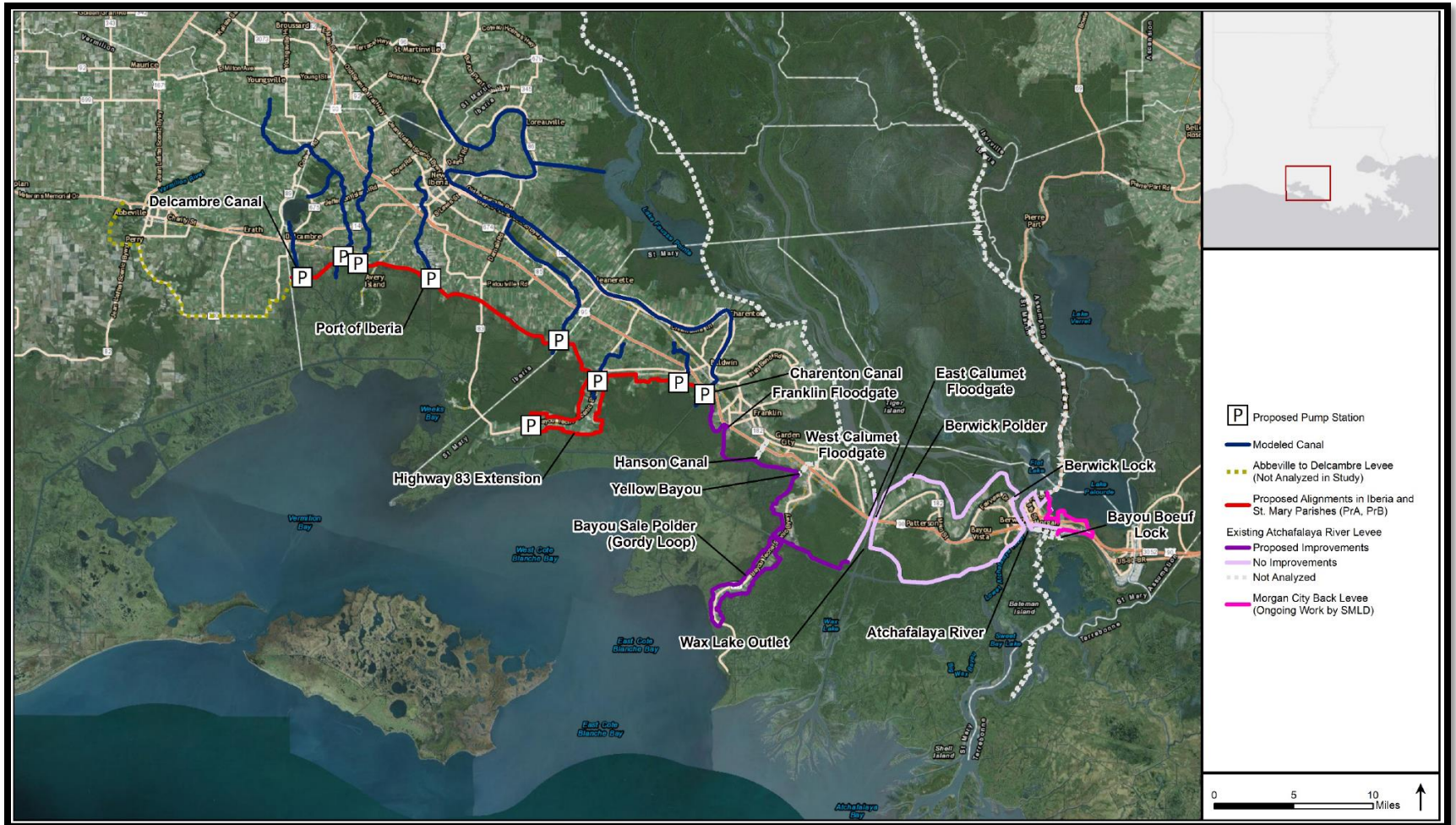


South Central Coastal Plan (TV-54)

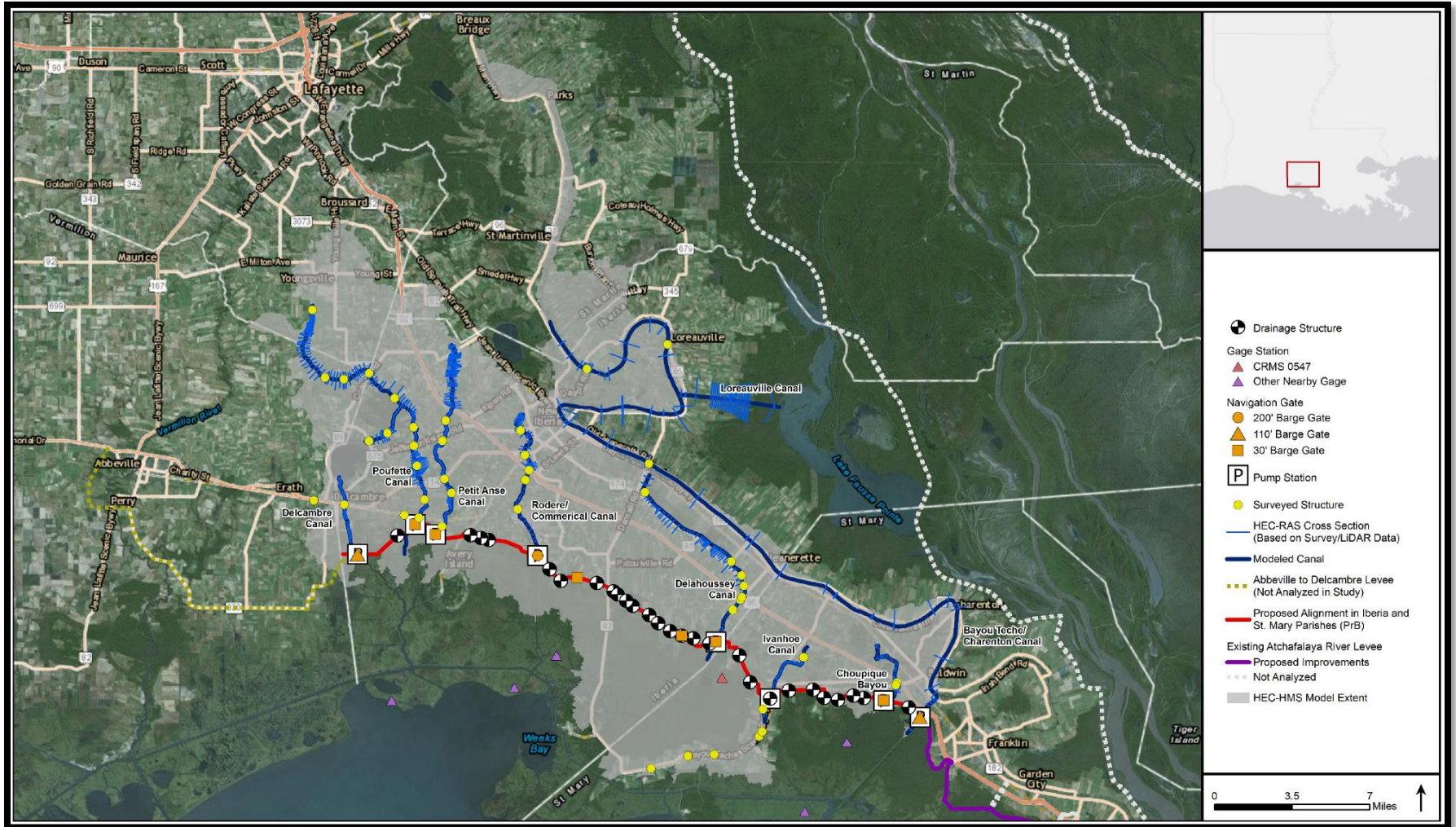
- **Project Features:**

- Study evaluates the level of risk reduction needed to reduce flooding due to storm surge by examining a new levee alignment running through Iberia and St. Mary Parishes.
- Study also examines the possibility of upgrading the existing deficient (for storm surge) MR&T riverine levee system segments in St. Mary Parish and identifies features and associated costs for the proposed levee systems
- Storm surge/wave modeling, project planning level designs and cost estimating has been completed
- This effort will assist the levee districts in project planning

South Central – Pump Station & Levee Alignment (TV-54)



South Central – Flood Gates, Drainage Structures & Levee Alignment (TV-54)



Levee District Updates in Iberia

- **Iberia Parish Levee & Conservation District:**
 - Levee District Currently Reviewing South Central Study provided by CPRA on June 30th
 - Upon Parish Council approval on Aug. 23rd, Levee District will proceed with 5-mil property millage vote on ballot on Nov. 18, 2017

Levee District Updates in Vermilion

- **Chenier Plain Authority:**

- Vermilion Parish requested that CPRA conduct an H&H Study similar to South Central Study recently completed for Iberia and St. Mary Parish
- Establish parish priority lists
- Outreach & Engagement w/ officials & public
- Early discussion of property millage vote: Nov. 2018

Bayou Chene Flood Control Structure

- **Project Features:**

- Size – Approximately 400 FT. Wide Barge Floodgate
- Receiving structures and Tie-in levees

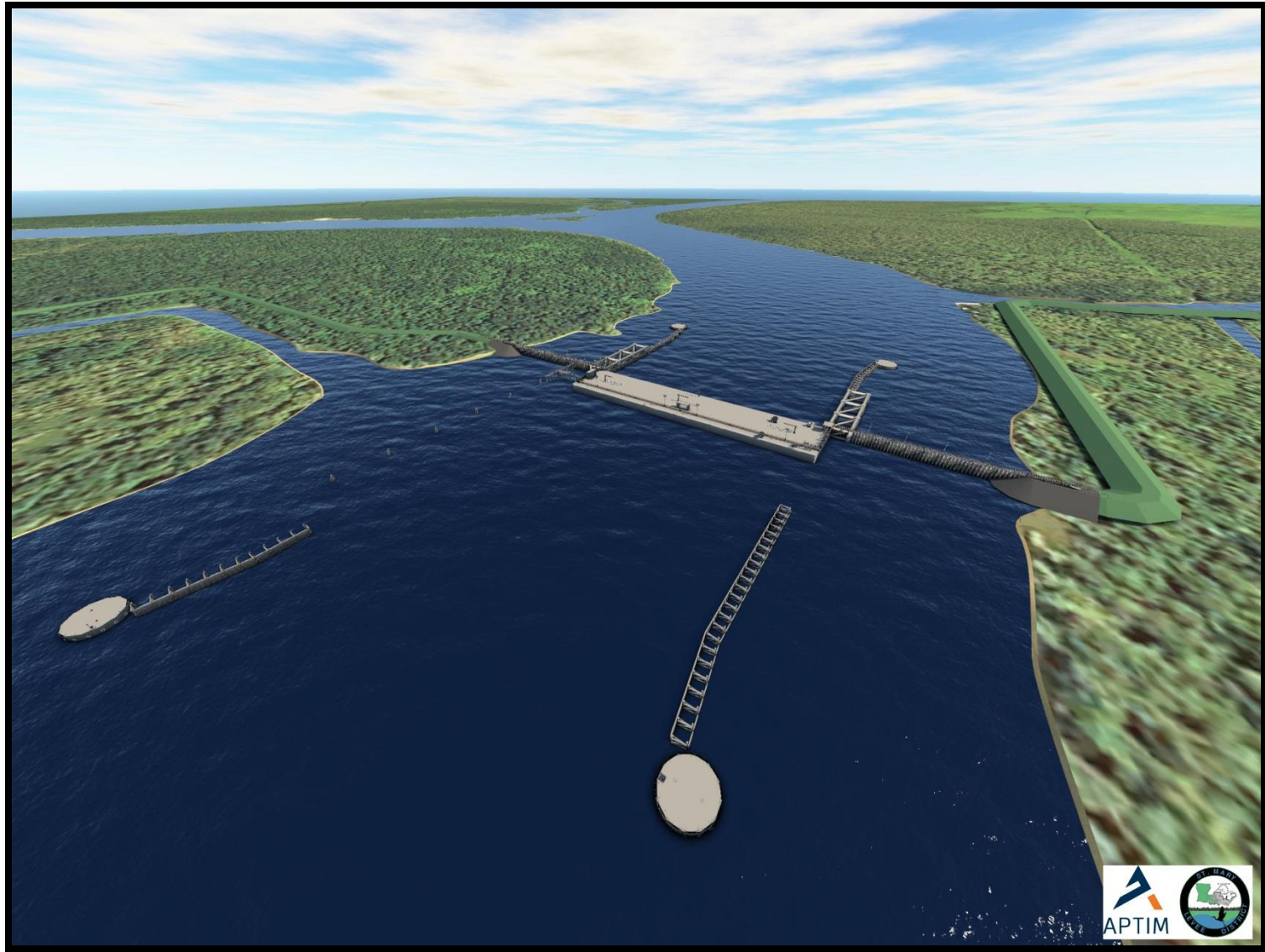
- **CPRA Funding Commitment:**

- Total Commitment \$80 M

- **Project Status:**

- St. Mary Levee District is leading the E&D and Permitting efforts with USACE

Bayou Chene Flood Control Structure



Louisiana Coastal Protection and Restoration
Authority

QUESTIONS?

Contact Information:

Patrick J. Landry, P.E.

CPRA Regional Operations Manager for SW La.

Operations Division

(337) 482-0680 (work)

(337) 501-8037 (cell)

patrick.landry@la.gov