



Southwest Louisiana Regional Update

Darrell Pontiff

CPRA Regional Operations Manager

October 24, 2018



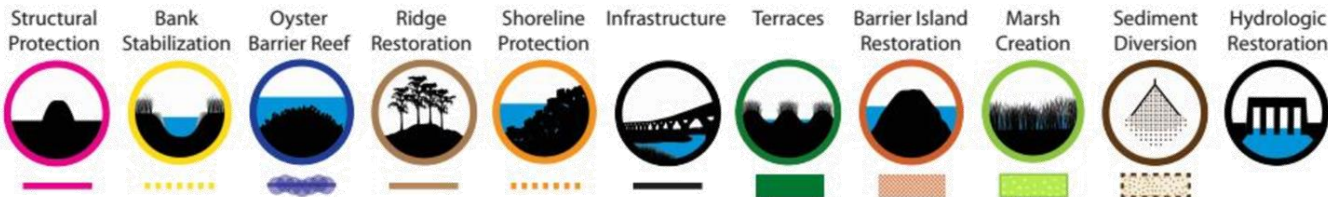
committed to our coast

TWO BASINS

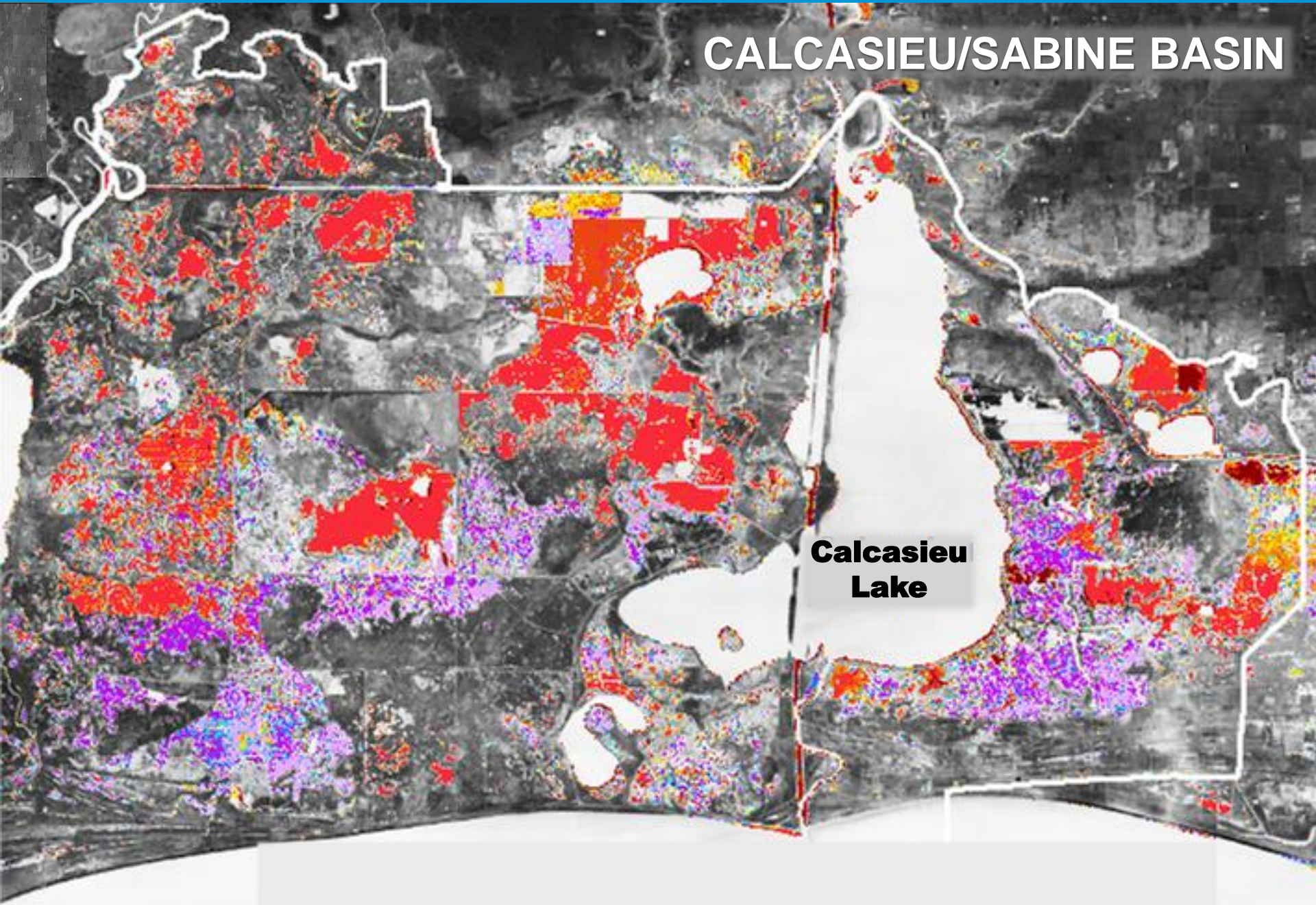
CALCASIEU/SABINE BASIN

MERMENTAU BASIN

Project Types



CALCASIEU/SABINE BASIN



CURRENT PROJECTS





**Cameron Parish
Shoreline (CS-33)**



Cameron Parish Shoreline Project

(CS-33)



Project Cost: \$45.8 million *(100% 2007-08 State Surplus funds)*

Construction Cost: \$40+ million

Project Features:

- Constructed 5+ miles of beach
- Pumped 2 million cubic yards of sand
- Sand source 20+ miles in Gulf of Mexico
- Sand fencing
- Volunteer vegetative plantings

Project Status:

- Sand pumping complete: Feb 2014
- Sand fence re-built: October 2015
- Dunes forming adjacent to sand fencing

Grand Bayou Marsh Creation Project

(CS-54)



CALCASIEU
LAKE

Cameron

**GRAND BAYOU MARSH
CREATION PROJECT
(CS-54)**

GRAND LAKE

WHITE
LAKE

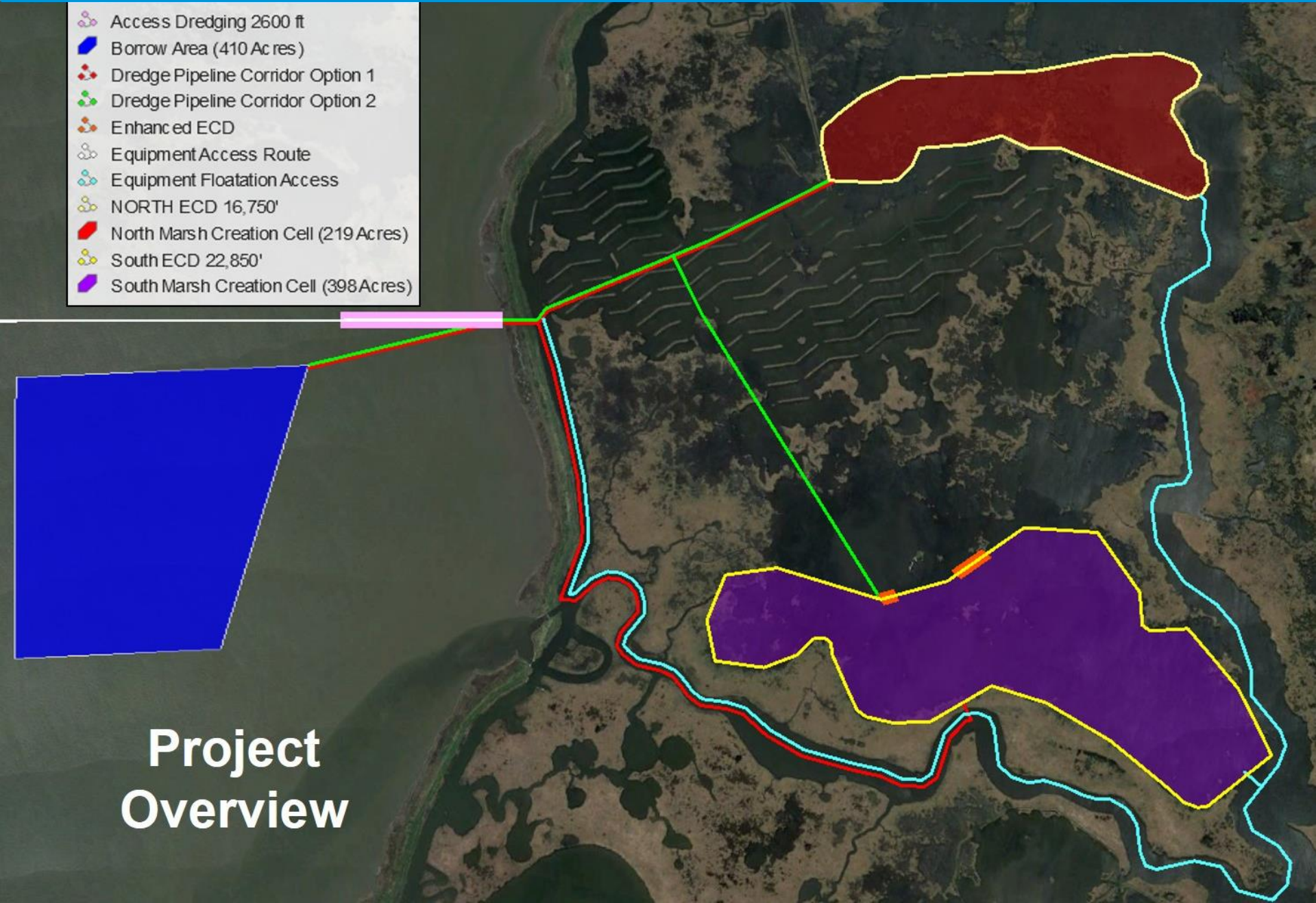
GULF OF MEXICO

Grand Bayou Marsh Creation Project

(CS-54)

- Access Dredging 2600 ft
- Borrow Area (410 Acres)
- Dredge Pipeline Corridor Option 1
- Dredge Pipeline Corridor Option 2
- Enhanced ECD
- Equipment Access Route
- Equipment Floatation Access
- NORTH ECD 16,750'
- North Marsh Creation Cell (219 Acres)
- South ECD 22,850'
- South Marsh Creation Cell (398 Acres)

**Project
Overview**







Project Features: Total Benefit 617 acres (2 cells)
219 acres (Miami Corp);
398 acres (Cameron Prairie)

Construction Cost: \$ 8.2M Base Bid
Potential Expansion/Nourishment

Project Status:

- **Construction started: September 2017**
- **Dredging started February 2018**
- **North Cell Complete (Approx. 998,758 CY)**
- **Currently Pumping Into South Cell**
- **Construction completion: December 2018 (450 days)**

Oyster Bayou Marsh Creation Project

(CS-59)



OYSTER BAYOU
MARSH CREATION
PROJECT (CS-59)

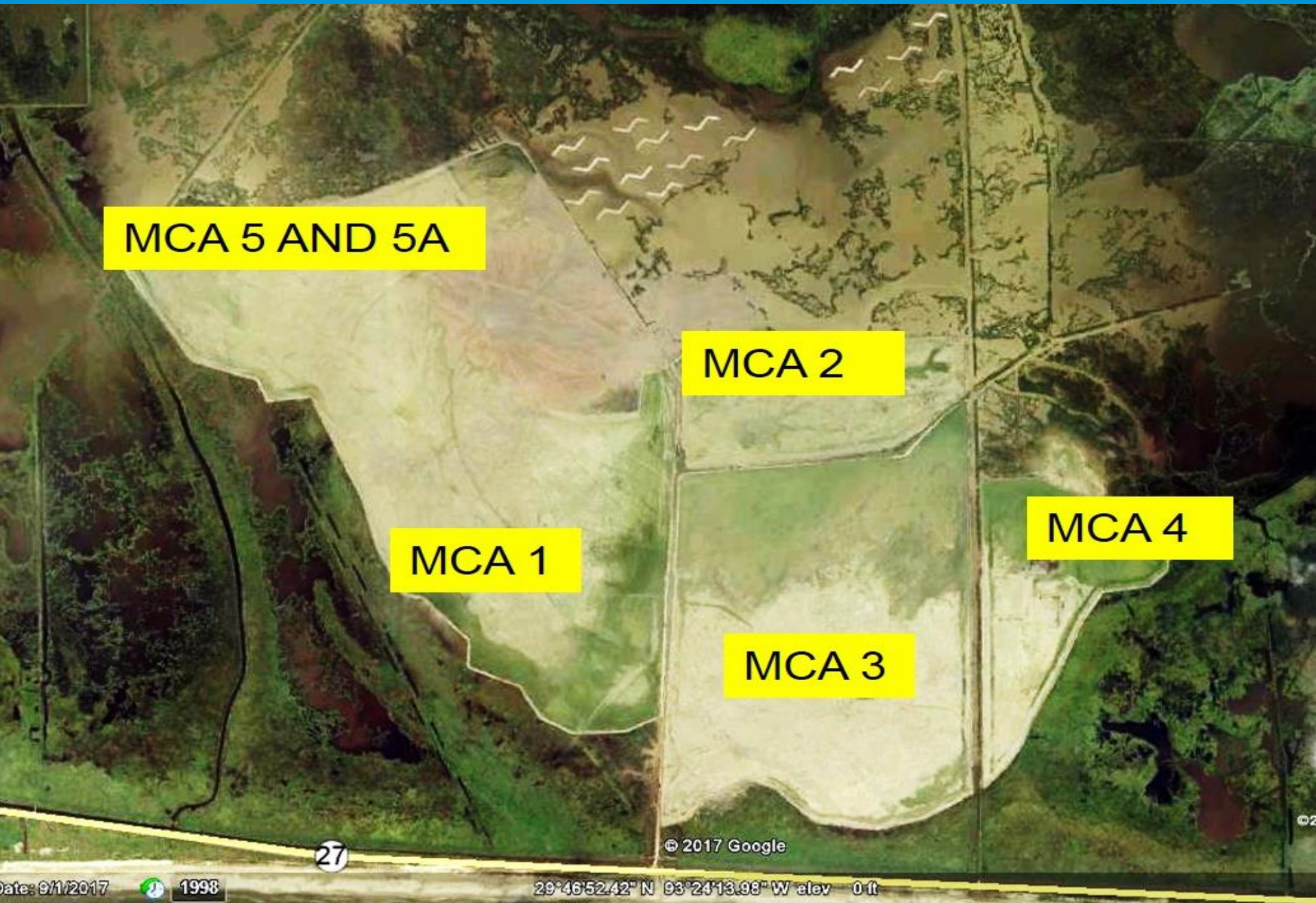
CALCASIEU
LAKE

Cameron

GRAND
LAKE

GULF OF MEXICO





Oyster Bayou Marsh Creation Project

(CS-59)



Project Features

- ▶ 950 acres of marsh creation
- ▶ 7,200 feet of terrace construction

Construction Cost: \$ 22.1 Million

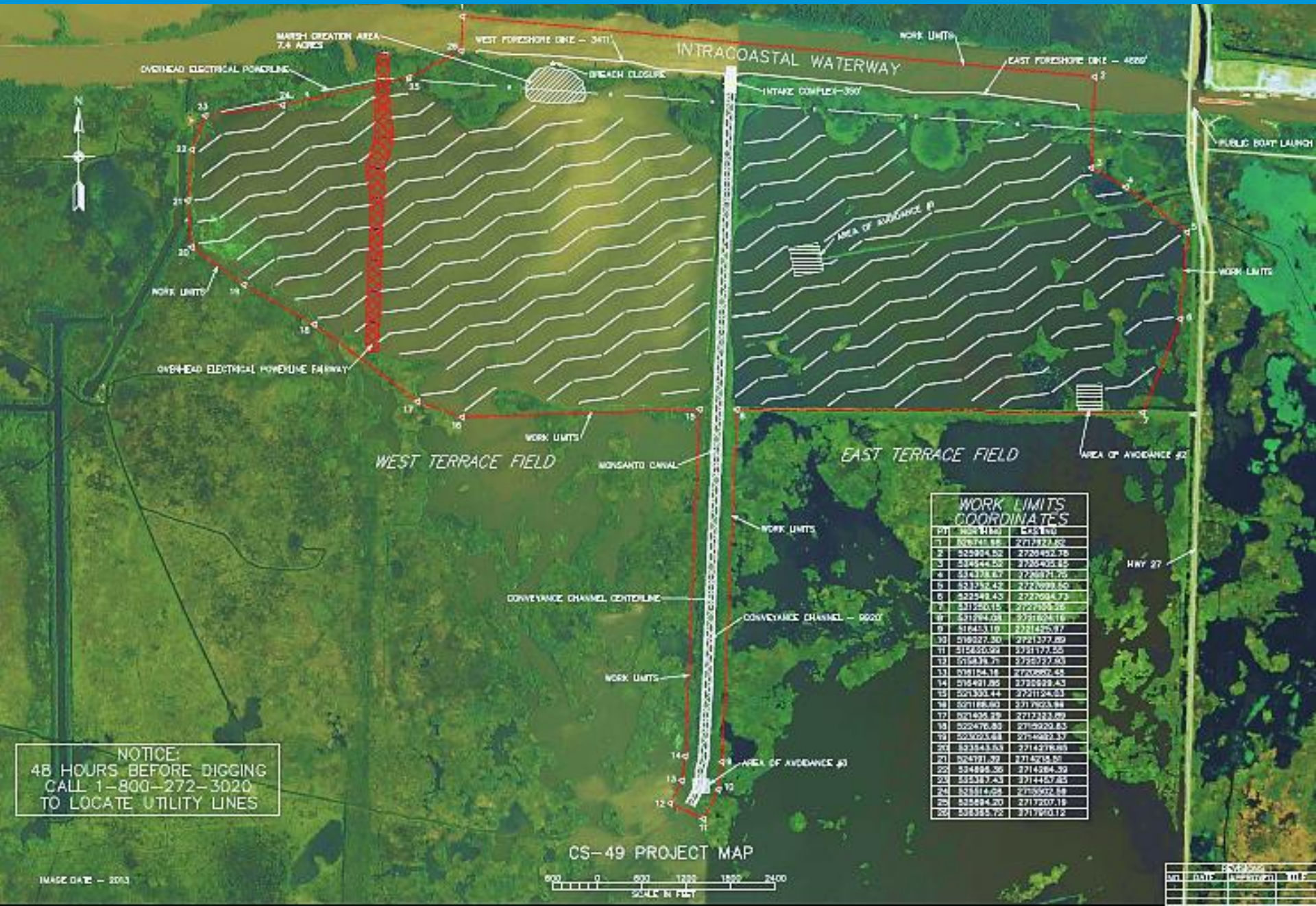
Project Status

- ▶ Construction start: December 2016
- ▶ Marsh Creation completion: September 2017
- ▶ 54,857 linear feet of earthen containment dikes
- ▶ Waterline along Hwy 82 relocated/Road crossing
- ▶ Dredged 4.31 Million Cubic Yards

Cameron Creole Freshwater Introduction (CS-49)



Cameron Creole Freshwater Introduction (CS-49)



Cameron Creole Freshwater Introduction (CS-49)

Project Features:

- Placement of sheet pile structure in Monsanto canal (8 - 5' square openings)
- 8,000 feet of GIWW rock shoreline protection
- 120,000 linear feet of terracing

Construction Cost: \$16 million (estimated)

Project Status:

- Project approved for Phase 2 construction at December 2017 CWPPRA Technical Committee Meeting
- NRCS is finalizing plans/specifications/permitting
- Expected Bid Date early 2019

Calcasieu River Salinity Control

(CS-65)



CALCASIEU RIVER
SALINITY CONTROL
MEASURES (CS-65)

CALCASIEU
LAKE

**DETAILS ON THIS
PROJECT COMING UP
LATER IN THIS MEETING**

GULF OF MEXICO

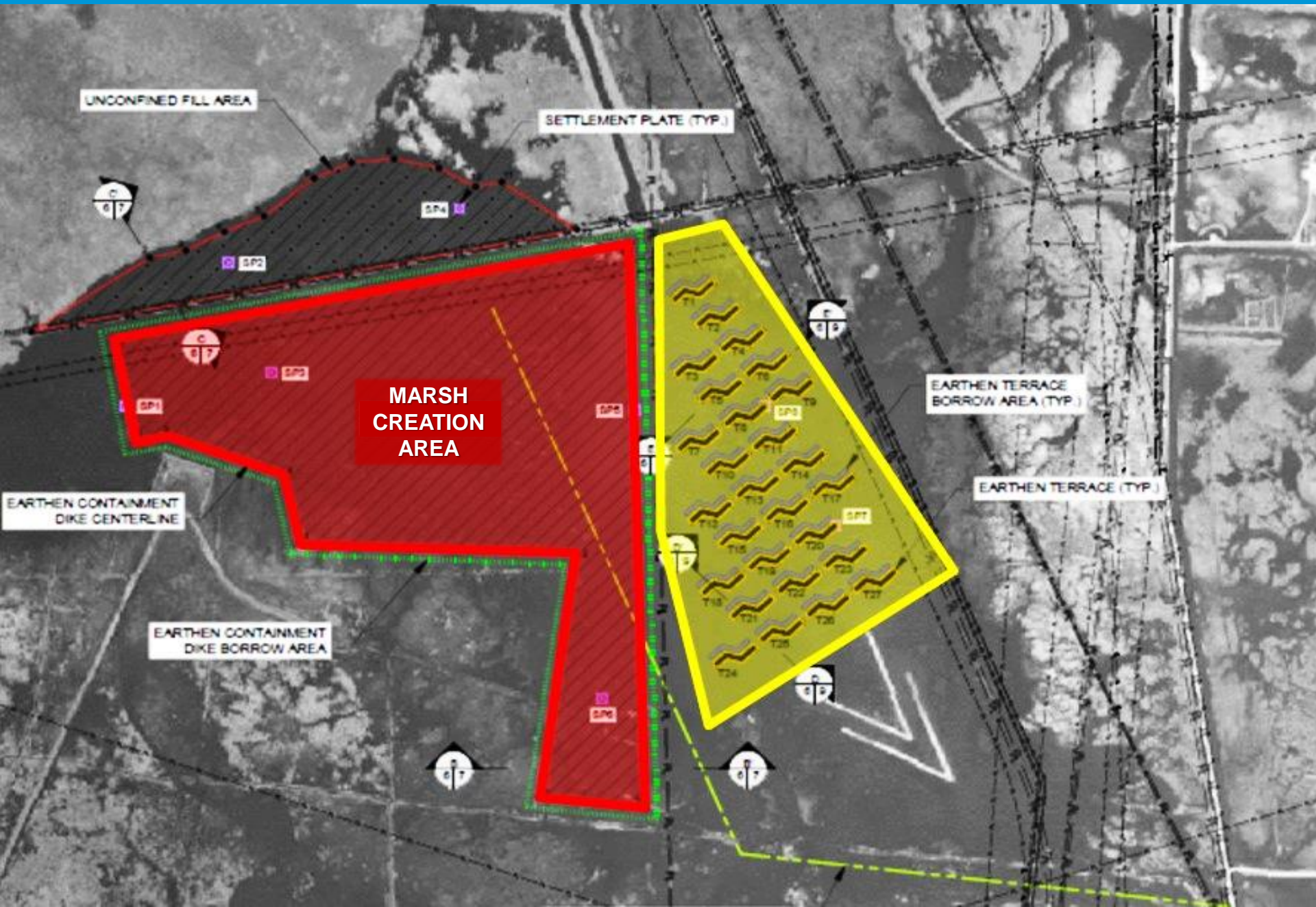
Cameron Meadows Marsh Creation

(CS-66)



Cameron Meadows Marsh Creation

(CS-66)



Project Features:

- 400 acres of marsh creation
- 12,150 linear feet of terraces (27 terraces)
- Borrow area – 5 miles south of the project area

Fully Funded Project Cost: \$ 35.4 million

Project Status:

- Construction Funding approved at January 2017 CWPPRA Task Force Meeting
- Securing land rights now
- Minor adjustments to plans
- Plan to be in construction in 2019

No Name Bayou Marsh Creation

(CS-78)



No Name Bayou Marsh Creation

(CS-78)



Project Features

- Benefit 533 acres of marsh
- 3.5 million cubic yards of material
- Borrow site still to be determined (possibly Calcasieu Lake)

Construction Cost: \$24 million (original estimate)

Project Status

- 30% Design meeting: TBD
- 95% Design meeting: TBD
- Request construction funds: TBD

Rabbit Island Restoration Project

(CS-80)



EQUIPMENT ACCESS CORRIDOR	
NORTHING	EASTING
495,536.6128	2,541,809.5115
496,193.7234	2,537,325.4145
496,214.0237	2,539,783.7020

WEST COVE

Rabbit
Island

Borrow
Area

Access Corridor

EAC/DPC

3

2

1

CAI CA
LA



Project Vision

Re-establish eroded marsh and nourish existing marsh to benefit bird habitat

Project Features

Placement of fill within the interior of the island, as well as the creation of dunes and rock dikes to maintain the integrity of the 200 acres of bird habitat

Project Status

- Contractor selected for E&D: (Royal Engineers)
- Conceptual alternatives being considered
- Permit application submitted August 2018
- Project is still awaiting funding authorization (Deepwater Horizon Oil Spill–NRDA) \$24 Million (construction)

Sabine Refuge Marsh Creation CYCLES 6 & 7 (CS-81)



SABINE REFUGE
MARSH CREATION
(CS-81) Cycles 6&7

Sabine Refuge Marsh Creation CYCLES 6 & 7 (CS-81)



Sabine Refuge Marsh Creation CYCLES 6 & 7 (CS-81)

Project Features:

- Creation of 900 acres of marsh, 29 acres nourishment
- Marsh to be created over 2 USACE maintenance dredging events of Calcasieu River

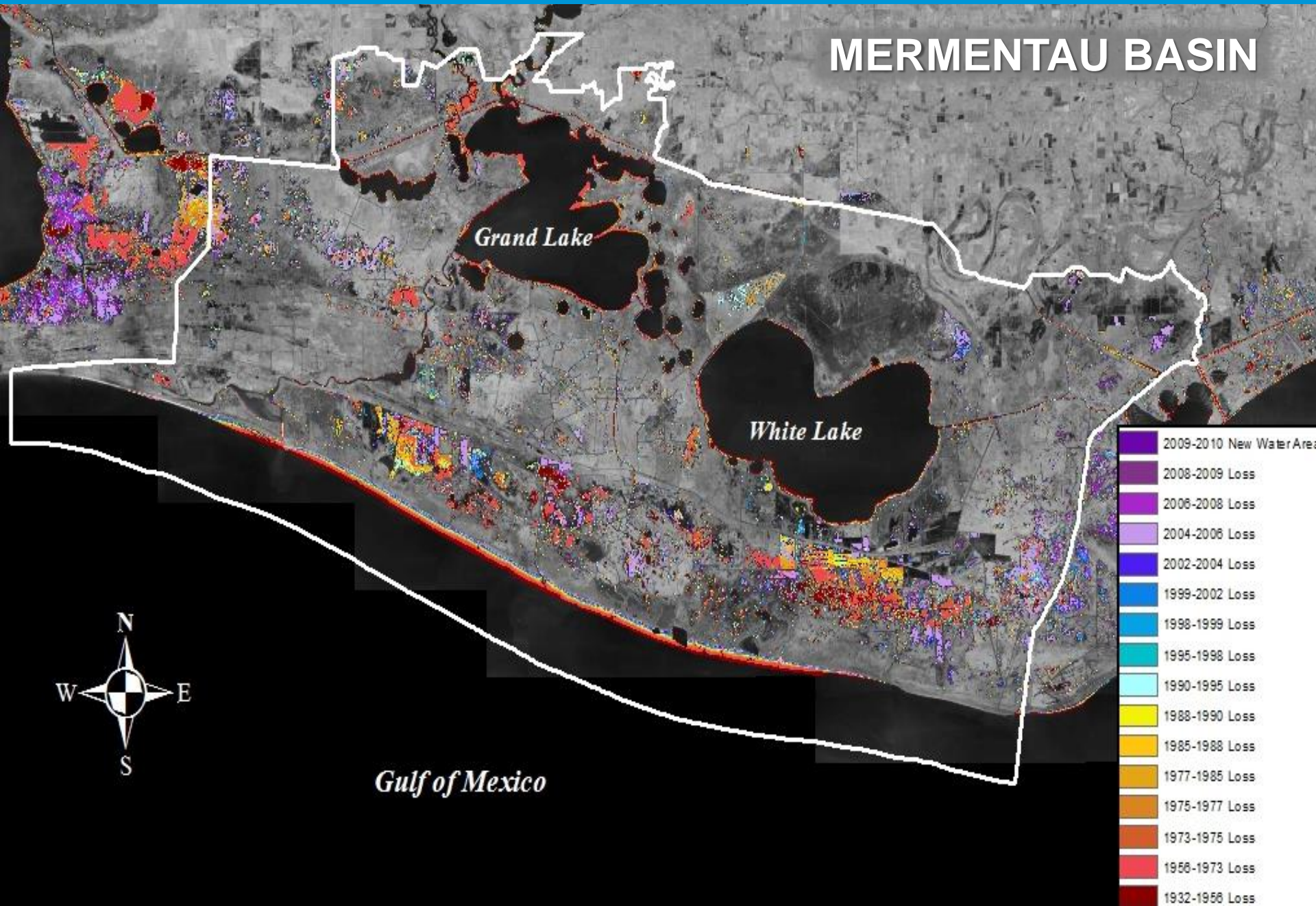
Construction Cost: \$24 million (estimated)

Project Status:

- Project approved for Phase 1 at December 2017 CWPPRA Technical Committee Meeting: \$3.8 Million
- Expected Bid Date: TBD

Historical Persistent Land Loss

1932-2010



Freshwater Introduction South of HWY 82 (ME-16)





Freshwater Introduction South of HWY 82 (ME-16)



Freshwater Introduction South of HWY 82 (ME-16)

Project Goals:

Reduce salinities south of Hwy 82 by increasing freshwater

Project Features: Four pipe barrel structure locations, (48 inch diameter), (3 or 4 barrel)
26,000 LF of earthen terraces
101,970 CY of spray dredging
39,432 CY of bucket dredging

Construction Cost: \$ 3.94 million

Project Status: Completed December 2006

Rockefeller Refuge Shoreline Stabilization (ME-18)



REEF BREAKWATER WITH LIGHTWEIGHT AGGREGATE CORE



Rockefeller Refuge Shoreline Stabilization (ME-18)

Project Features

Construct lightweight aggregate core breakwaters along shoreline for 3 miles, approximately 150' offshore on a contour of -3.5'

Construction Cost: \$18.9 million (Potential Expansion)

Project Status

- NTP issued November 1, 2017
- Additional dollars made available from other agencies
- Construction completion: June 24, 2019 (600 calendar days)

Grand Lake Shoreline Protection (Tebo Point) ME-21



Accomplished in two increments

CIAP portion (7.2 miles) completed in 2010

CWPPRA portion (1.1 miles) completed in 2017 (Tebo Point)



Project Goals:

Protect SW shoreline of Grand Lake from wave erosion

Project Features: 8.3 miles of foreshore rock dike

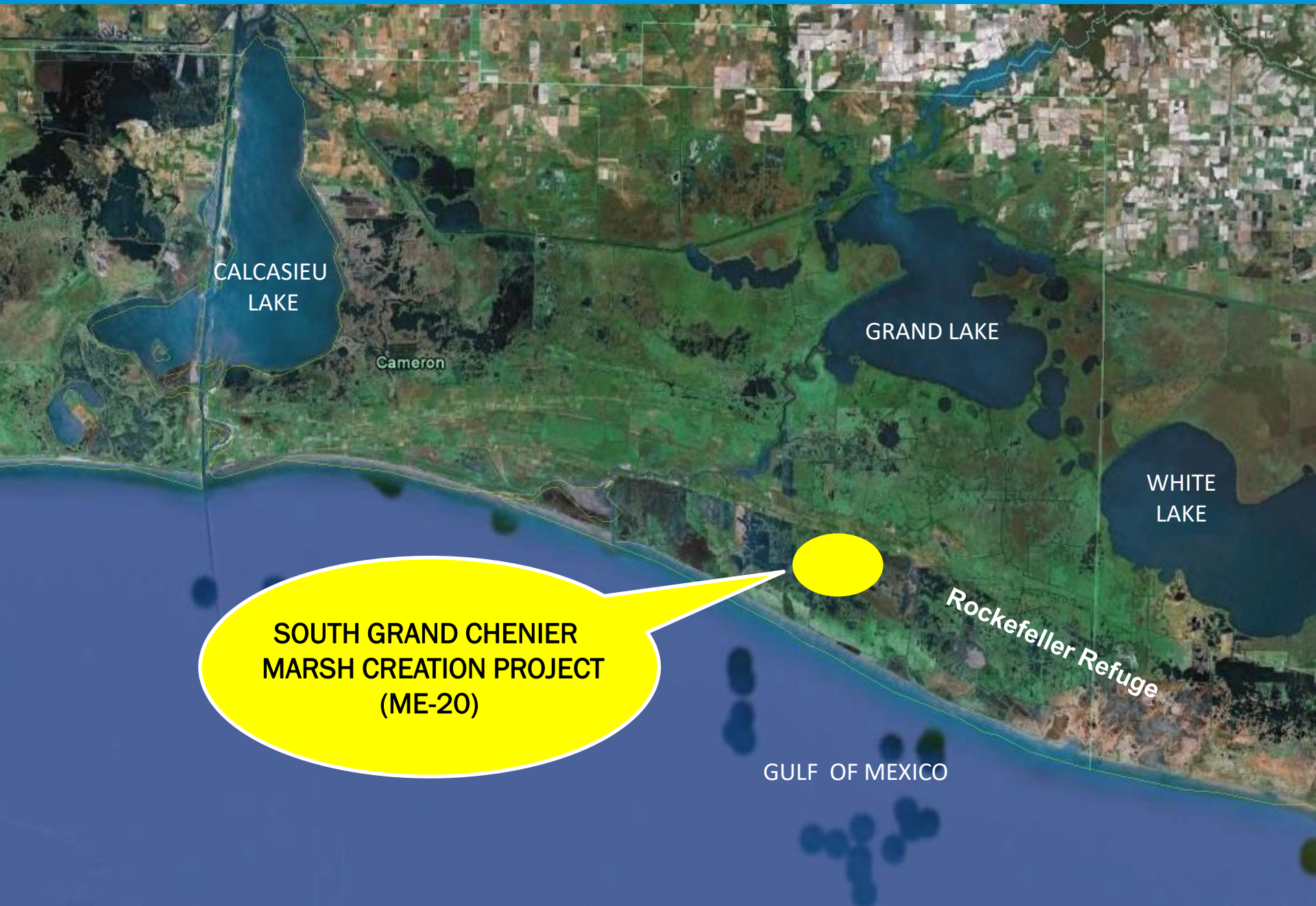
Combined Construction Cost: \$ 14.6 million

- ▶ **CIAP Portion:** \$10.6 million (7.2 miles) *completed Feb. 2010*
- ▶ **CWPPRA Portion:** \$ 4.0 million (1.1 miles) *completed May 2017*



South Grand Chenier Marsh Creation

(ME-20)



CALCASIEU
LAKE

Cameron

GRAND LAKE

WHITE
LAKE

Rockefeller Refuge

SOUTH GRAND CHENIER
MARSH CREATION PROJECT
(ME-20)

GULF OF MEXICO

South Grand Chenier Marsh Creation

(ME-20)



*Gulf of
Mexico*

Borrow Site

**Rockefeller
Wildlife Refuge**

*Second
Lake*

Hog Bayou

*Back Prong
Bayou*

Hog Bayou

Project Features

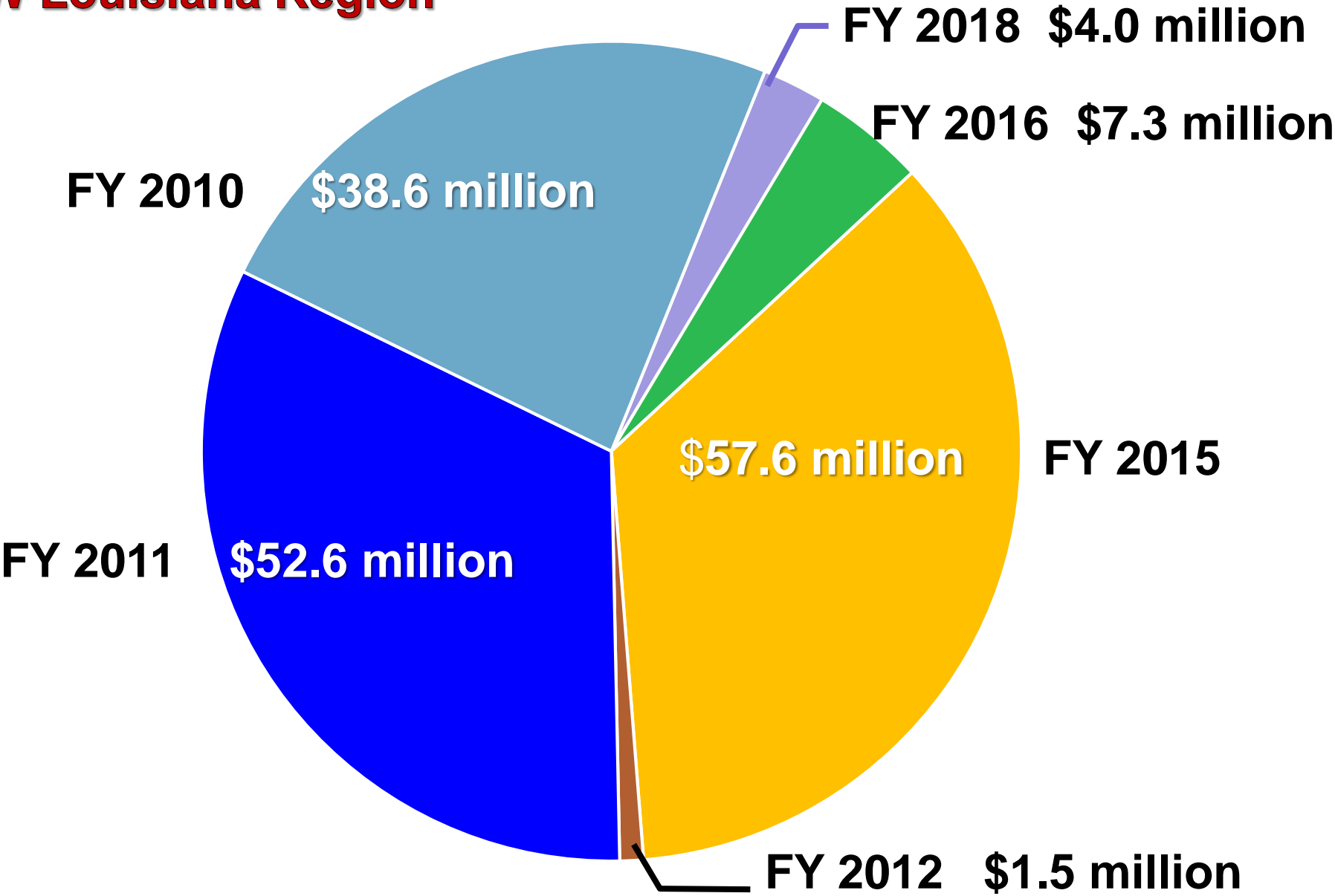
Benefit 430 acres of marsh by building two cells of 200+ acres each with sediment from the Gulf of Mexico

Anticipated Construction Cost: \$17 million (*estimated*)

Project Status:

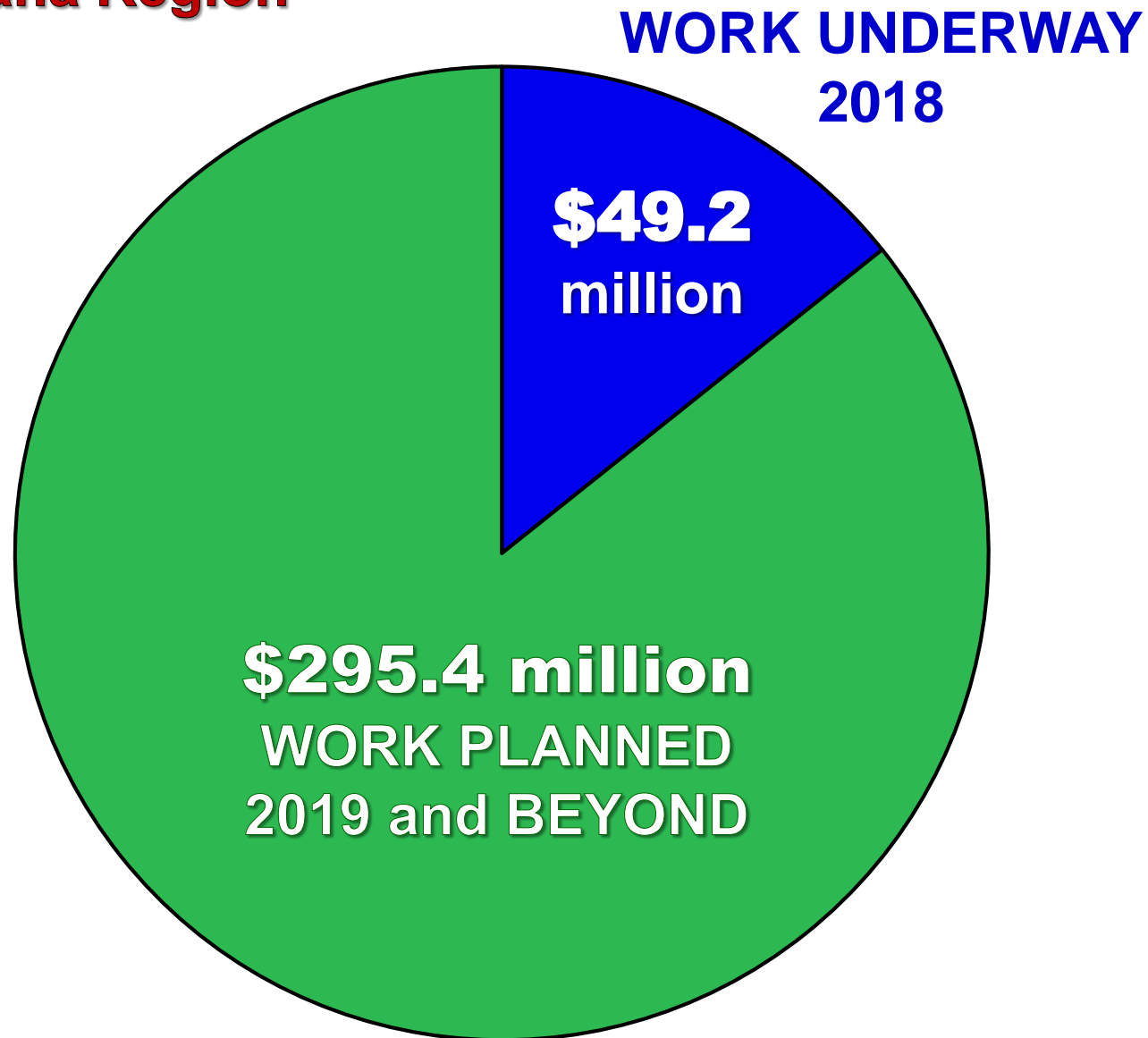
- Out to bid twice: April 6, 2017 and August 14, 2018
- Each time bids came in over estimate: \$8.1 million & \$9.9 million
- Project team rejected all bids and is regrouping on project design and will conduct “Industry Day” with dredgers

SW Louisiana Region



LOOKING FORWARD: \$344.6 Million *CURRENT/FUTURE PROJECTS*

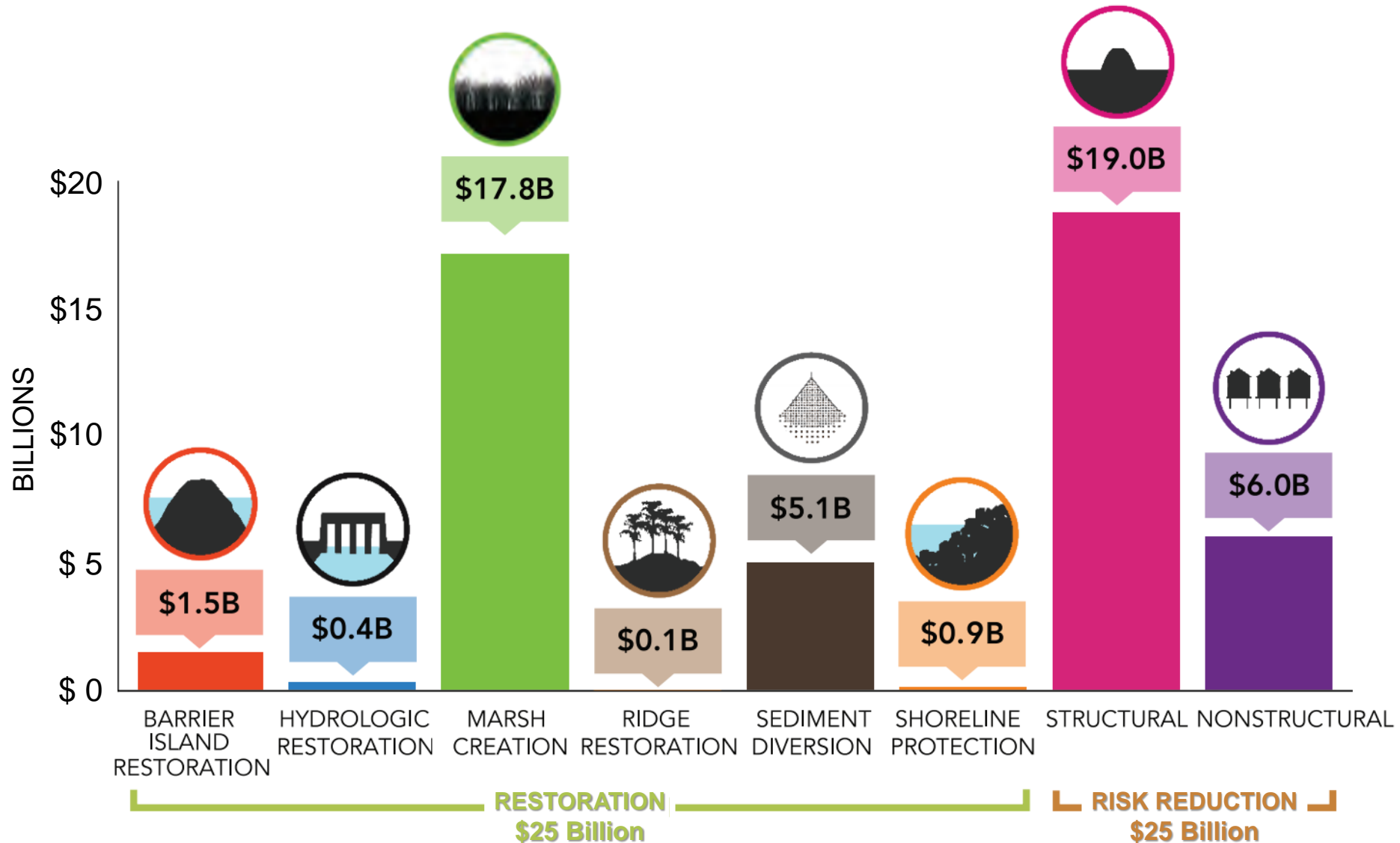
SW Louisiana Region



Proposed Master Plan Funding

\$50 Billion

FUNDING BY PROJECT TYPE





CONNECT WITH US!

