

STATE OF LOUISIANA
OFFICE OF COASTAL PROTECTION AND RESTORATION
RESTORATION DIVISION

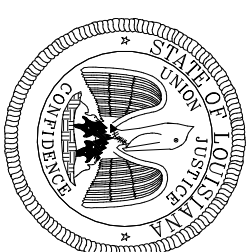
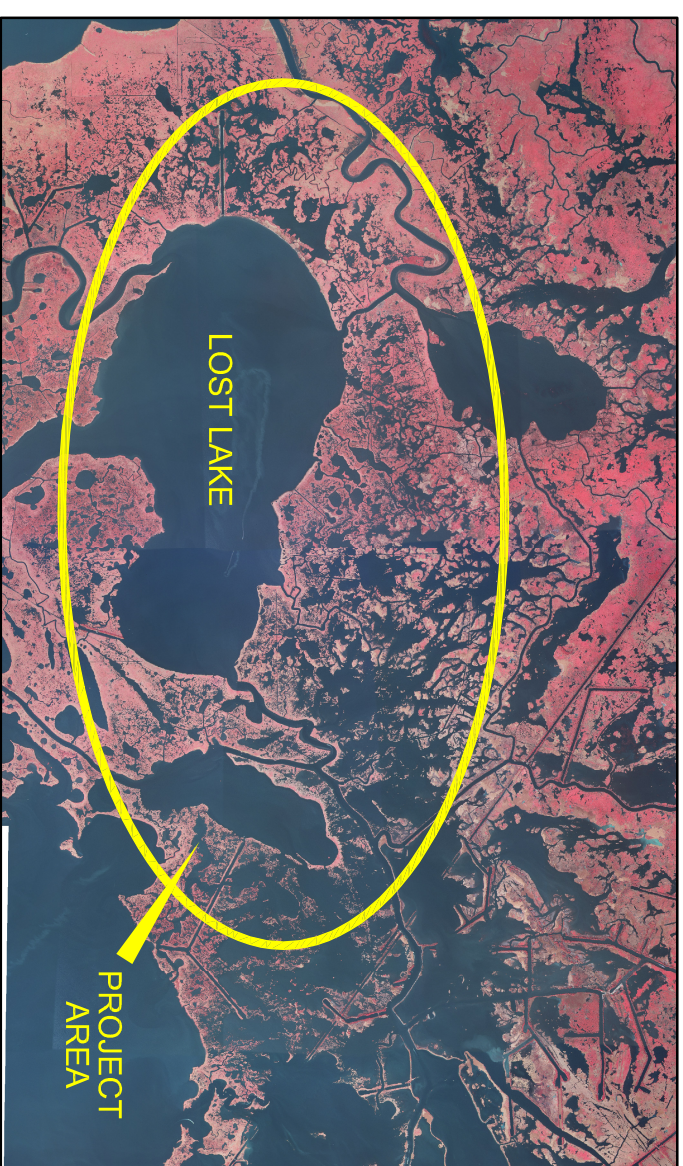
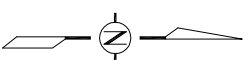
**TOPOGRAPHIC/BATHYMETRIC SURVEY
IN SUPPORT OF:
LOST LAKE MARSH CREATION
& HYDROLOGIC RESTORATION
TE-72
TERREBONNE PARISH, LOUISIANA**

INDEX TO SHEETS

SHEET NO.	DESCRIPTION
1	TITLE SHEET
2	PLAN - LOCATION OF SURVEY TRANSECTS
3	HORIZONTAL & VERTICAL CONTROL INFO
4	PLAN - LOCATION OF MAGNETOMETER TRANSECTS
5	PLAN - PIPELINE LOCATION
6	PLAN - WESTERN FILL SITE & BORROW AREA
7	PLAN - LOST LAKE BORROW AREA
8	PLAN - EASTERN FILL & TERRACE AREA
9-53	PROFILE OF SURVEY TRANSECTS T-1 - T-105
54	PLAN - WATER CONTROL STRUCTURES LOCATION MAP
55-68	PLAN & SECTION - WATER CONTROL STRUCTURES WC-1 - WC-14

GENERAL NOTE:

- ① REFER TO LDNR CONTRACT NO: 2503-10-49 (TE-72), AND PYBURN AND ODOM PROJECT NO: 20-501.
- ② PLANE COORDINATES SHOWN HEREON ARE IN US SURVEY FEET AND ARE RELATIVE TO THE NORTH AMERICAN DATUM OF 1983 BASED ON THE STATE PLANE COORDINATE SYSTEM FOR LOUISIANA, SOUTH ZONE (1702).
- ③ ELEVATIONS ARE IN FEET AND TENTHS AND REFER TO NORTH AMERICAN VERTICAL DATUM OF 1988 (NAVD88) EPOCH 2006.81.
- ④ TOPOGRAPHIC AND HYDROGRAPHIC POSITIONS OBTAINED USING A COMBINATION OF GULFNET VIRTUAL REAL TIME NETWORK (VRS) AND STANDARD REALTIME KINEMATIC (RTK) METHODS.
- ⑤ CONTROL MARK TE 34 SM 04 WAS VERIFIED BY (2) 5 HOUR STATIC GPS SESSIONS THE RESULTS OF WHICH WERE HELD FOR VERTICAL CONTROL OF THE PROJECT.
PUBLISHED ELEVATION = 2.99'
OBSERVED/HELD ELEVATION = 2.93'
- ⑥ HYDROGRAPHIC DATA OBTAINED USING ODOM HYDROTRAC ECHO SOUNDER WITH HORIZONTAL POSITIONING CORRECTIONS FROM GULFNET (VRS).
- ⑦ SOUNDINGS WERE REDUCED TO ELEVATIONS IN REALTIME USING GULFNET (VRS).
- ⑧ THE SURVEY WAS PERFORMED FEB - MAY, 2011, BY PYBURN AND ODOM, INC.
- ⑨ THE INFORMATION DEPICTED ON THIS MAP REPRESENTS THE RESULTS OF SURVEYS MADE ON THE DATES INDICATED AND CAN ONLY BE CONSIDERED AS INDICATING THE GENERAL CONDITIONS EXISTING AT THE TIME.
- ⑩ REFER TO P&O FIELD BOOK NO: 3034,3035 & 3036.



FEDERAL PROJECT SPONSOR

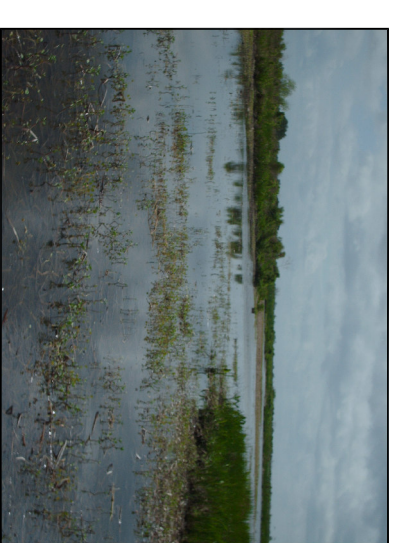


PHOTO OF MARSH AREA (TYPICAL)

REV.	DATE	DESCRIPTION	BY



PYBURN & ODOM MCA
Engineering & Related Services Since 1948

OFFICE OF COASTAL PROTECTION & RESTORATION
ENGINEERING BRANCH
450 LAUREL STREET
BATON ROUGE, LOUISIANA 70801

LOST LAKE MARSH CREATION
& HYDROLOGIC RESTORATION
STATE PROJECT NUMBER: 2503-10-49 (TE-72)
FEDERAL PROJECT NUMBER:

TITLE SHEET
DATE: MAY, 2011
SHEET 1 OF 68

DRAWN BY: P & O
DESIGNED BY: P & O
APPROVED BY: