



River Reintroduction into Maurepas Swamp

PO-0029

Project Overview

March, 2018

Project Overview

The River Reintroduction into Maurepas Swamp project was recommended and unanimously approved by the Louisiana Legislature in both the 2012 and 2017 Coastal Master Plans. This \$200 million project is located in St. John the Baptist, St. James Parishes, and Ascension Parishes at Mississippi River mile 144.2 near Garyville, Louisiana. This project will benefit approximately 45,000 acres of coastal forest by reconnecting the Mississippi River and the Maurepas Swamp, thereby improving the swamp ecosystem health and function.

Issues to be Addressed

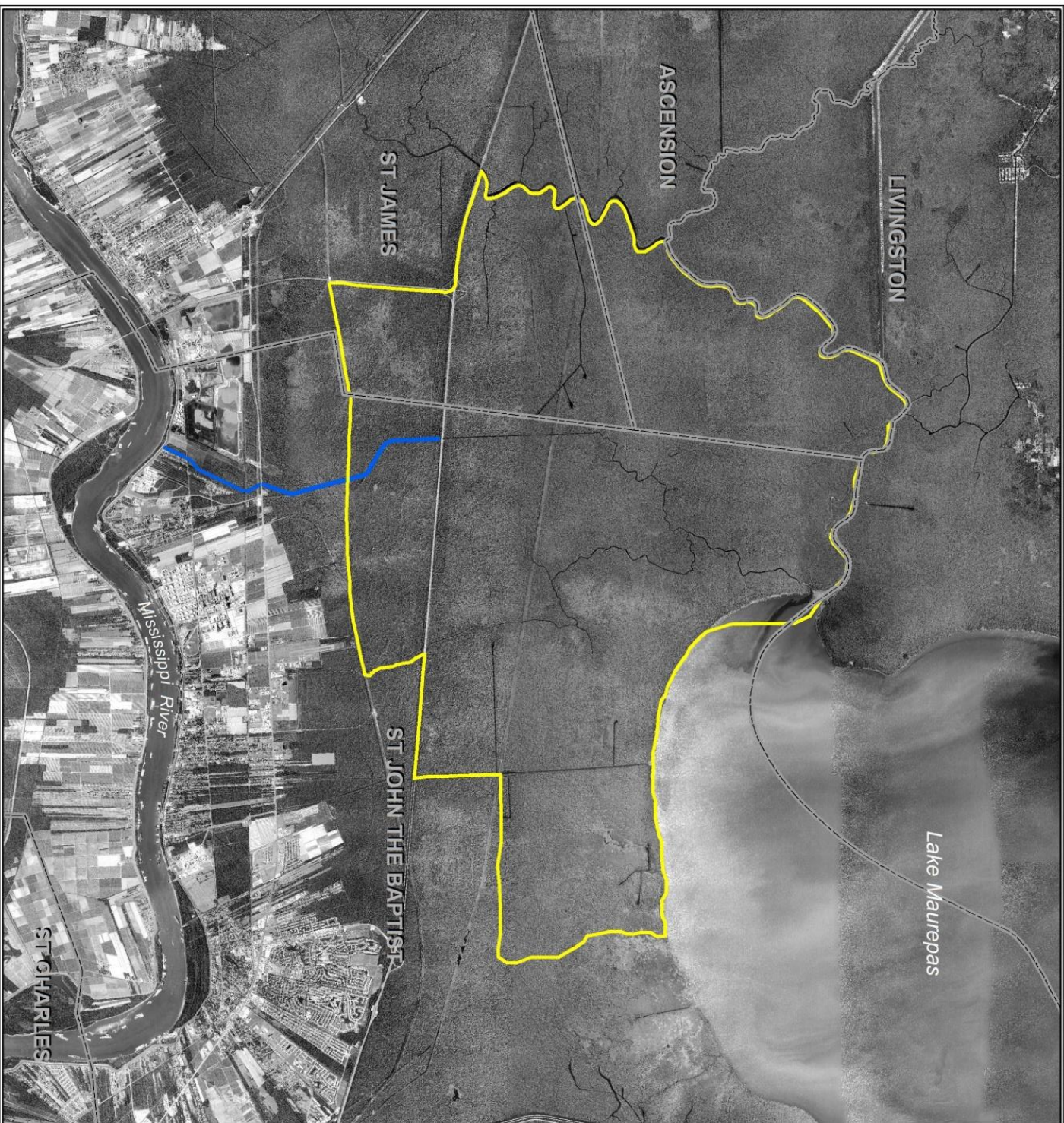
The swamp has been slowly transitioning from forested freshwater swamp to marsh. Disconnection from the river deprived the swamp of the seasonal high and low flows that both enriched the soil and allowed for regeneration of trees respectively.

Project Benefits

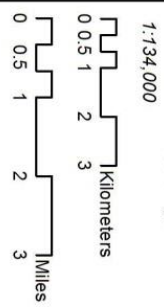
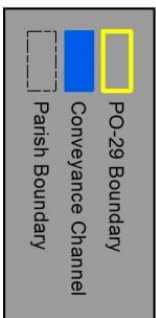
This project is being designed to convey up to 2,000 cubic feet per second of water from the Mississippi River approximately 5.5 miles to the north into the Maurepas Swamp through Hope Canal. The specific objectives of the project are to: restore natural swamp hydrology, increase sediment and nutrient loading to the project area, increase substrate accretion, retain and increase existing areas of swamp vegetation including overstory cover, and reduce salinity levels.

Project Design and Location

The current design is to construct a structure with three 10'x10' box culverts in the Mississippi River Levee, then 5.5 miles of conveyance channel to the outfall into the Maurepas swamp just north of I-10. The first 2 miles will be a newly excavated channel, and the remaining 3.5 miles will follow the existing Hope Canal. Small earthen levees will be constructed to guide the water to the swamp. Other project features include road and railroad crossings, pipeline and utility crossings, and a pump station. The pump station near LA 54 and US 61 will collect local surface drainage and place it into the conveyance channel which will redirect and deliver water via Hope Canal into the Maurepas Swamp. Designed in consideration of local drainage in Garyville and the surrounding areas, the project will have no negative impacts to drainage.



**River Reintroduction
into Maurepas Swamp
(PO-29)**



Coastal Protection and Restoration
Authority of Louisiana
Map Date: July 17, 2013
Imagery: 2012 DOQQ
//2013040292