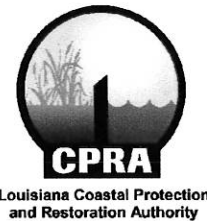
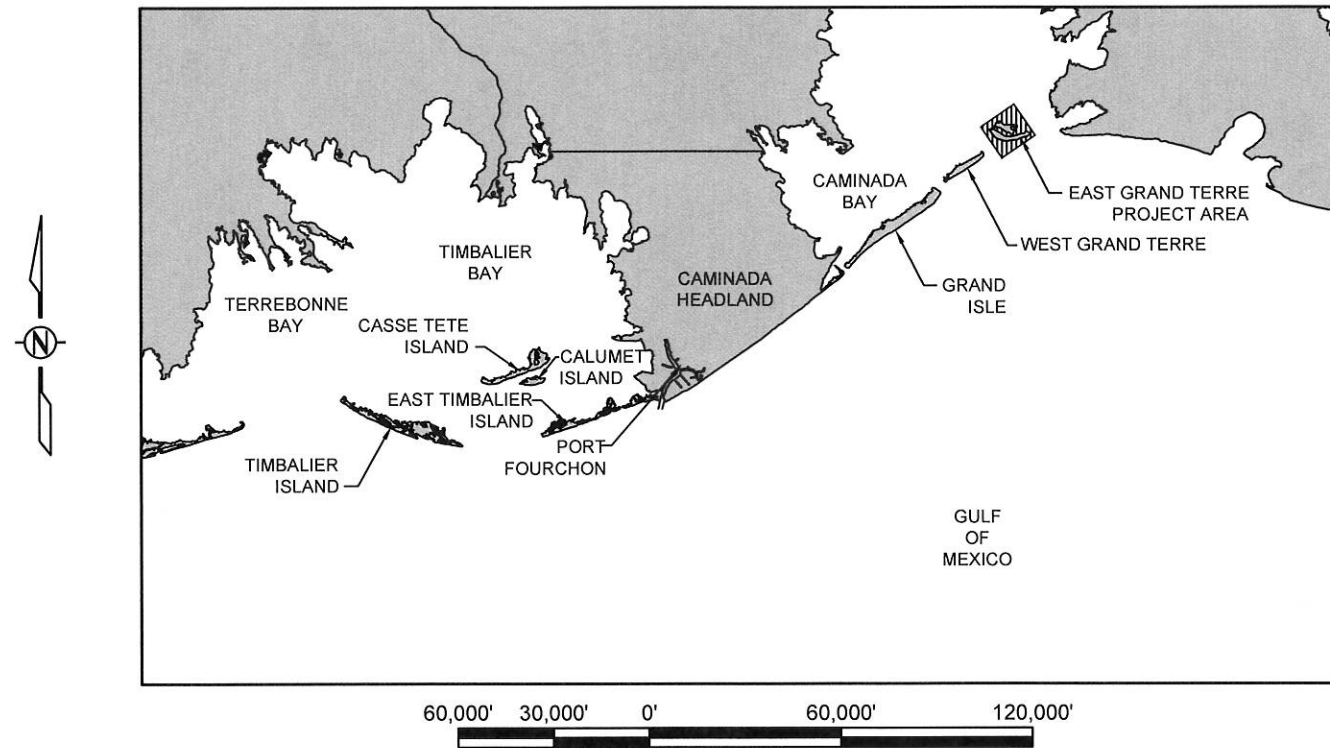


STATE OF LOUISIANA  
COASTAL PROTECTION AND RESTORATION AUTHORITY  
ENGINEERING DIVISION

INDEX TO SHEETS

SHEET NO.	DESCRIPTION
1	TITLE SHEET
2	GENERAL NOTES
3	PROJECT LAYOUT
4	COORDINATES & PLANTING DETAILS

COASTWIDE VEGETATIVE PLANTING  
YEAR 5 – EAST GRAND TERRE PROJECT  
LA-39  
JEFFERSON PARISH, LOUISIANA



LICENSURE CLASSIFICATION REQUIREMENTS

MAJOR CATEGORY: HEAVY CONSTRUCTION  
SUBCLASSIFICATION: LANDSCAPING, GRADING & BEAUTIFICATION

OR

MAJOR CATEGORY: SPECIALITY  
SUBCLASSIFICATION: COASTAL RESTORATION & HABITAT ENHANCEMENT OR SEEDING, SODDING, LOAD & SOIL STABILIZATION, EROSION CONTROL, SHEET PILING

\_\_\_\_\_  
ENGINEER MANAGER

\_\_\_\_\_  
ENGINEER SUPERVISOR

\_\_\_\_\_  
PROJECT DESIGNER

				COASTAL PROTECTION & RESTORATION AUTHORITY ENGINEERING DIVISION 450 LAUREL STREET BATON ROUGE, LOUISIANA 70801		COASTWIDE VEGETATIVE PLANTING YEAR 5 - EAST GRAND TERRE PROJECT		TITLE SHEET	
						STATE PROJECT NUMBER: LA-39			
						FEDERAL PROJECT NUMBER: LA-39		DATE: APRIL 2016	
REV.	DATE	DESCRIPTION	BY	DRAWN BY: SHANE FAUST		DESIGNED BY: SHANE FAUST		APPROVED BY: SHANNON HAYNES, P.E.	
								SHEET 1 OF 4	

## GENERAL NOTES

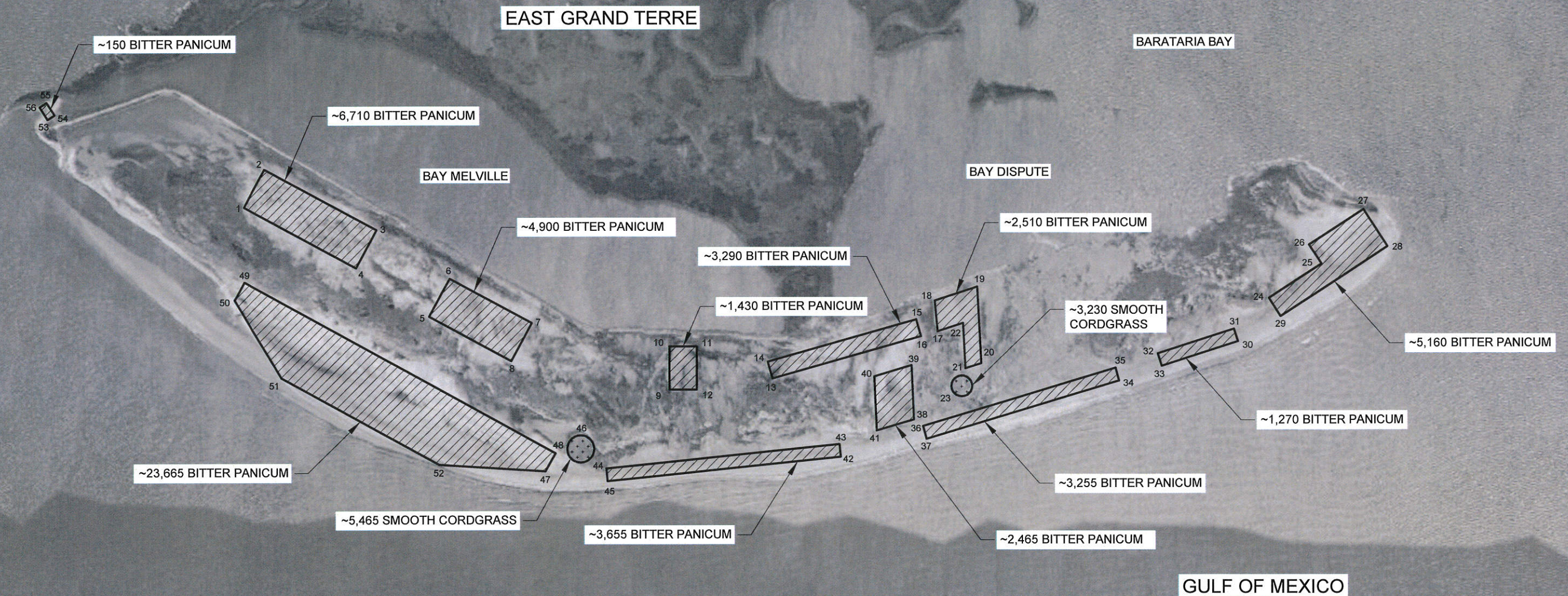
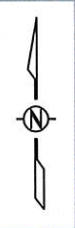
1. PLANS AND SPECIFICATIONS ARE COMPLEMENTARY; WHAT IS REQUIRED BY ONE IS BINDING AS IF REQUIRED BY ALL. CLARIFICATIONS AND INTERPRETATIONS OF, OR NOTIFICATIONS OF MINOR VARIATIONS AND DEVIATIONS IN THE CONTRACT DOCUMENTS, WILL BE ISSUED BY THE ENGINEER, IF NECESSARY.
2. EXACT LOCATION OF ALL PLANTS SHALL BE DETERMINED ON SITE BY THE ENGINEER DURING PRE-CONSTRUCTION LAYOUT.
3. ALL DISTANCE MEASUREMENTS SHOWN ON THE PLANS ARE APPROXIMATE.
4. NO EQUIPMENT MAY ALTER THE EXISTING CONDITIONS OF THE NEWLY CREATED DUNE PLATFORM OR DISTURB EXISTING VEGETATION.
5. ANY DAMAGE TO EXISTING U.S. COAST GUARD NAVIGATION AIDS OR PRIVATE NAVIGATION AIDS SHALL BE REPAIRED BY THE CONTRACTOR TO U.S. COAST GUARD STANDARDS AT THE EXPENSE OF THE CONTRACTOR.
6. MEAN HIGH WATER (MHW) AND MEAN LOW WATER (MLW) ARE BASED ON THE TIDE STATION 8761724 AT GRAND ISLE, EAST POINT. ELEVATIONS ARE REFERENCED TO NAVD 88, US FEET.
7. ALL EQUIPMENT SHALL BE FLOATING AT ALL TIMES DURING TRANSIT TO AND FROM THE PROJECT SITE.

## SUMMARY OF ESTIMATED QUANTITIES

ITEM NO.	DESCRIPTION	UNIT	ESTIMATED QUANTITY
1	BITTER PANICUM FOUR-INCH CONTAINER	EACH	58,450
2	SMOOTH CORDGRASS PLUGS	EACH	8,695

QUANTITIES SHOWN ARE FOR BID PURPOSES ONLY AND WERE CALCULATED ACCORDING TO CONDITIONS SURVEYED IN AUGUST 2010. THE OWNER RESERVES THE RIGHT TO ADJUST QUANTITIES HIGHER OR LOWER WITHOUT ADJUSTMENT OF THE UNIT PRICE.

					<b>COASTAL PROTECTION AND RESTORATION AUTHORITY</b> 450 LAUREL STREET BATON ROUGE, LOUISIANA 70801	COASTWIDE VEGETATIVE PLANTING YEAR 5 - EAST GRAND TERRE PROJECT STATE PROJECT NUMBER: LA-39 FEDERAL PROJECT NUMBER: LA-39	GENERAL NOTES  DATE: APRIL 2016
REV.	DATE	DESCRIPTION	BY	DRAWN BY: SHANE FAUST	DESIGNED BY: SHANE FAUST	APPROVED BY: SHANNON HAYNES, P.E.	SHEET 2 OF 4



LEGEND	
	BITTER PANICUM PLANTING AREA
	SMOOTH CORDGRASS PLANTING AREA

**NOTES:**

- BACKGROUND IMAGERY WAS TAKEN IN OCTOBER 2013.
- EXACT LOCATIONS OF PLANTS SHALL BE DETERMINED ON SITE BY THE ENGINEER DURING PRE-COSNTRUCTION LAYOUT.
- NO EQUIPMENT MAY ALTER THE EXISTING CONDITIONS OF THE MARSH OR DISTURB EXISTING VEGETATION.
- SEE SHEET 4 FOR PLANTING AREA COORDINATES.

REV.	DATE	DESCRIPTION	BY

OFFICE OF COASTAL PROTECTION & RESTORATION  
**ENGINEERING BRANCH**  
 450 LAUREL STREET  
 BATON ROUGE, LOUISIANA 70801

DRAWN BY: SHANE FAUST      DESIGNED BY: SHANE FAUST

COASTWIDE VEGETATIVE PLANTING  
 YEAR 5 - EAST GRAND TERRE PROJECT

STATE PROJECT NUMBER: LA-39  
 FEDERAL PROJECT NUMBER: LA-39

APPROVED BY: SHANNON HAYNES, P.E.

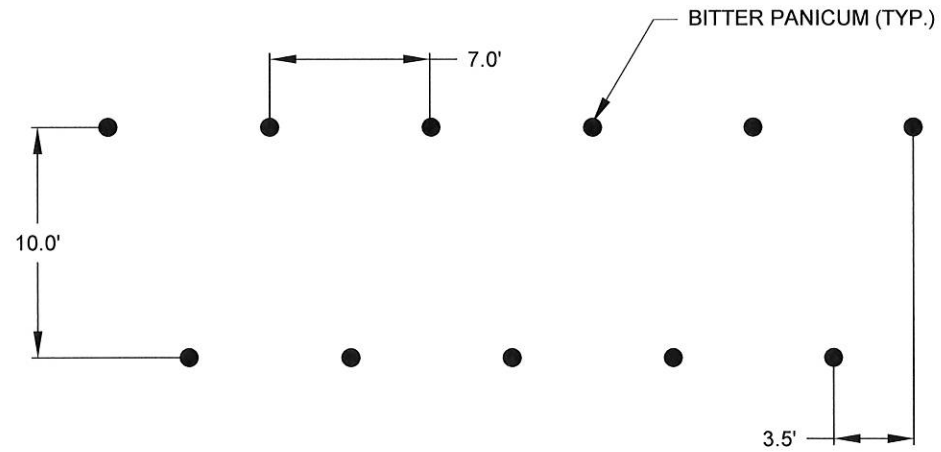
PROJECT LAYOUT

DATE: APRIL 2016

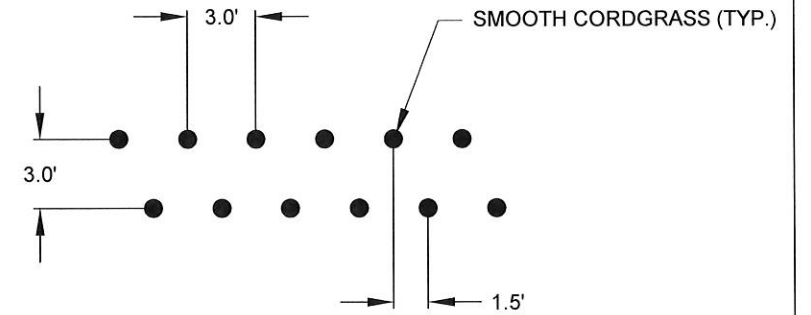
SHEET 3 OF 4

PLANTING AREA COORDINATES		
POINT	LONGITUDE	LATITUDE
1	3,739,390.79	298,758.34
2	3,739,580.65	299,108.98
3	3,740,616.61	298,548.05
4	3,740,426.75	298,197.40
5	3,741,097.74	297,748.65
6	3,741,287.60	298,099.30
7	3,742,043.68	297,689.91
8	3,741,853.82	297,339.27
9	3,743,316.37	297,073.96
10	3,743,316.37	297,472.54
11	3,743,567.99	297,472.54
12	3,743,567.99	297,073.96
13	3,744,267.30	297,175.84
14	3,744,223.21	297,331.11
15	3,745,593.54	297,720.16
16	3,745,637.62	297,564.89
17	3,745,791.12	297,610.74
18	3,745,763.75	297,894.35
19	3,746,156.40	298,021.97
20	3,746,193.95	297,316.18
21	3,746,047.10	297,268.46
22	3,746,024.85	297,686.71
23	3,746,013.17	297,106.03
24	3,748,854.98	297,916.52
25	3,749,341.87	298,233.25
26	3,749,227.37	298,409.27
27	3,749,729.99	298,736.23
28	3,749,953.21	298,393.07
29	3,748,963.70	297,749.38

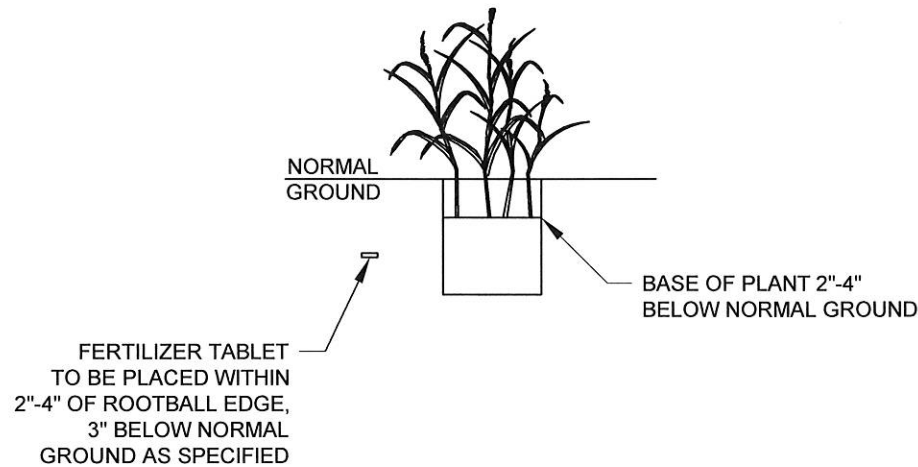
PLANTING AREA COORDINATES		
POINT	LONGITUDE	LATITUDE
30	3,748,569.13	297,517.51
31	3,748,532.48	297,631.77
32	3,747,825.99	297,405.13
33	3,747,862.64	297,290.87
34	3,747,470.35	297,155.15
35	3,747,439.19	297,273.46
36	3,745,655.49	296,737.34
37	3,745,686.64	296,619.03
38	3,745,568.75	296,797.64
39	3,745,547.35	297,296.41
40	3,745,205.93	297,193.79
41	3,745,227.33	296,695.02
42	3,744,895.77	296,453.42
43	3,744,883.62	296,570.85
44	3,742,728.40	296,347.84
45	3,742,740.55	296,230.41
46	3,742,492.65	296,527.71
47	3,742,168.37	296,321.41
48	3,742,260.22	296,488.08
49	3,739,395.32	298,066.84
50	3,739,303.47	297,900.17
51	3,739,735.78	297,182.92
52	3,741,189.26	296,381.96
53	3,737,585.46	299,573.47
54	3,737,649.50	299,614.74
55	3,737,575.17	299,330.06
56	3,737,511.14	299,688.79



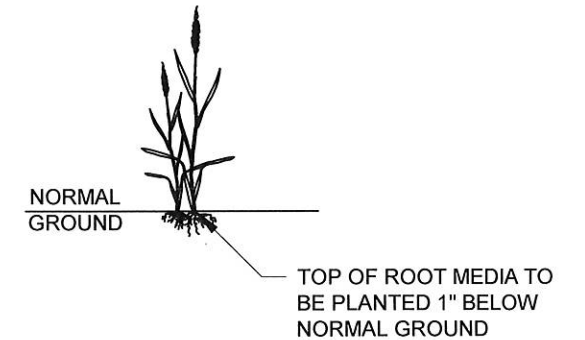
**TYPICAL BITTER PANICUM PLAN**  
PLANTING LAYOUT



**TYPICAL SMOOTH CORDGRASS PLAN**  
PLANTING LAYOUT



**TYPICAL DETAIL A**  
BITTER PANICUM  
4" CONTAINER



**TYPICAL DETAIL B**  
SMOOTH CORDGRASS  
PLUG

**NOTES:**

- BITTER PANICUM PLANTS SHALL BE PLANTED ON SEVEN (7) FOOT CENTERS WITH ROWS TEN (10) FOOT APART.
- SMOOTH CORDGRASS PLANTS SHALL BE PLANTED ON THREE (3) FOOT CENTERS WITH ROWS THREE (3) FOOT APART.
- LOCATION OF PLANT ROWS ARE APPROXIMATE. SPECIES LOCATIONS ARE SUBJECT TO CHANGE DUE TO SITE CONDITIONS AND/OR CONSTRUCTION VARIABLES.

				<b>COASTAL PROTECTION AND RESTORATION AUTHORITY</b>		COASTWIDE VEGETATIVE PLANTING YERA 5 - EAST GRAND TERRE PROJECT		COORDINATES AND PLANTING DETAILS	
				450 LAUREL STREET BATON ROUGE, LOUISIANA 70801		STATE PROJECT NUMBER: LA-39			
						FEDERAL PROJECT NUMBER: LA-39		DATE: APRIL 2016	
				DRAWN BY: SHANE FAUST		DESIGNED BY: SHANE FAUST		APPROVED BY: SHANNON HAYNES, P.E.	
REV.	DATE	DESCRIPTION	BY					SHEET 4 OF 4	