



**State of Louisiana
Coastal Protection and Restoration Authority**

2015 Annual Inspection Report

for

Barataria Bay Waterway East Shoreline Protection

State Project Number BA-26
Priority Project List 6

August 24, 2015
Jefferson Parish

Prepared by:

Luke Prendergast, E.I.
Coastal Protection and Restoration Authority
New Orleans Regional Office
CERM, Suite 309
2045 Lakeshore Dr.
New Orleans, LA 70122

Table of Contents

I. Introduction.....	1
II. Project Description and History.....	1
III. Inspection Purpose and Procedures.....	1
IV. Inspection Results.....	2
V. Conclusions.....	2
VI. Recommendations.....	2
Immediate Repairs.....	2
Programmed Maintenance.....	2

Appendices

Appendix A	Project Features Map
Appendix B	Photographs
Appendix C	Three Year Budget Projections
Appendix D	Field Inspection Form

I. Introduction

The Barataria Bay Waterway East Bank Protection Project (BA-26) encompasses 2,790 acres (880 ha) of brackish marsh and open water habitat on the east bank of the Barataria Bay Waterway located in Jefferson Parish, Louisiana approximately 1.5 miles south of Lafitte. The Project is bounded by the Barataria Bay Waterway to the west, various canals to the east and south, and The Pen and Bayou Dupont to the north (Appendix A).

II. Project Description and History

The Barataria Bay Waterway East Bank Protection Project includes approximately 17,100 linear feet (3.2 miles) of foreshore rock dike bank line protection and an earthen hydrologic barrier created from dredged material from the Barataria Bay Waterway Channel placed to the East along the rock dike within the project area. The rock structure was constructed with a synthetic clay core to reduce its overall weight. The clay material was encapsulated in geotextile bags and placed along the centerline of the dike. The dike is intended to re-establish the eastern bank of the Barataria Bay Waterway and to protect the adjacent marsh from unnatural water exchange and subsequent erosion which is exacerbated by wakes from vessel traffic on the waterway.

Project construction began on February 19, 2001, and was completed on May 21, 2001. Project life is estimated to be 20 years. Annual project inspections are planned.

In December 2005, a contract to raise these structures was awarded and resulted in the placement of 17,417 tons of rock riprap on the settled sections of the structure. The work was completed on January 24, 2006.

III. Inspection Purpose and Procedures

The purpose of the annual inspection of the Barataria Bay Waterway East Bank Protection Project (BA-26) is to evaluate the constructed project features to identify any deficiencies and to prepare a report detailing the condition of project features and recommended corrective actions. Should it be determined that corrective actions are needed, CPRA shall provide a detailed cost estimate for engineering, design, supervision, inspection, and construction contingencies, and an assessment of the urgency of such repairs (O&M Plan August 9, 2002). The annual inspection report also contains a summary of maintenance projects and an estimated projected budget for the upcoming three (3) years for operation, maintenance and rehabilitation. The three (3) year projected operation and maintenance budget is shown in Appendix C. A summary of past operation and maintenance events completed on the project are outlined in Section II.

An inspection of the Barataria Bay Waterway East Bank Protection Project (BA-26) was held on June 17, 2015, by Luke Prendergast and Melissa Hymel of CPRA, along with Quin Kinler of NRCS. Photographs of that inspection are included in Appendix B of this report.

IV. Inspection Results

The overall condition of the rock shoreline protection structure was good (Photo #1). Some portions of the rock structure exhibited minor settlement adjacent to and south of the marsh creation portion of the South Shore of the Pen Project (BA-41, Photo #2). Accretion and vegetation were observed behind the rock structure at the north end of the project (Photo #3).

V. Conclusions

The Barataria Bay Waterway East Protection Project (BA-26) is performing adequately. The rock dike is protecting the existing marsh as designed. Some settlement has been observed and will continue to be monitored; however, no maintenance is required at this time.

VI. Recommendations

Immediate Repairs

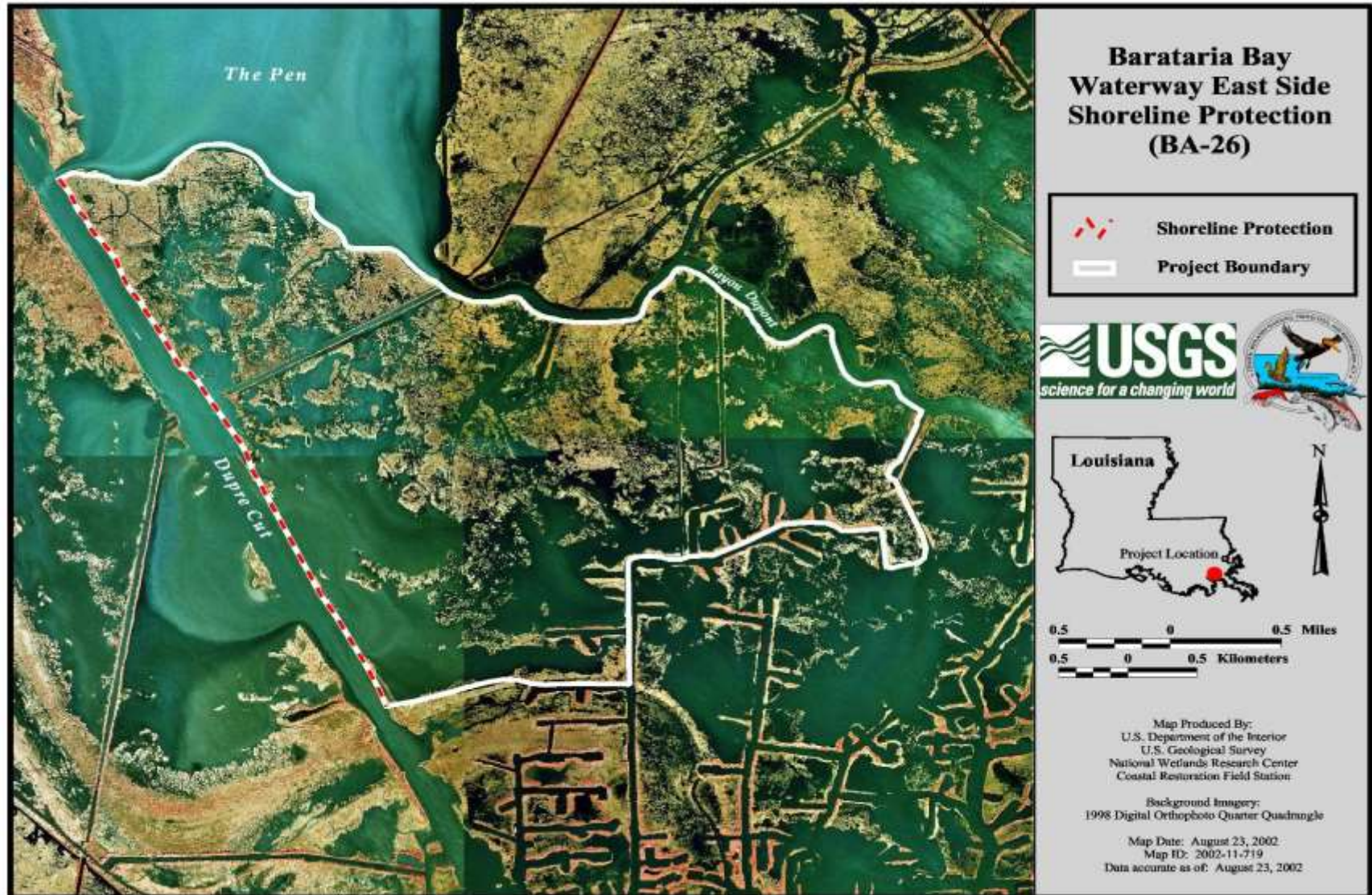
- No immediate repairs are necessary at this time.

Programmed Maintenance

- Continue to monitor the settlement of the rock structure.

Annual Inspection Report
Barataria Bay Waterway East Bank Protection
State Project No. BA-26

Appendix A
Project Features Map



Appendix B

Photographs



Photo #1 – Shoreline Protection



Photo # 2 – Some Settlement Noted



Photo # 3 – Accretion & Vegetation

Annual Inspection Report
Barataria Bay Waterway East Bank Protection
State Project No. BA-26

Appendix C

Three Year Budget Projection

Annual Inspection Report
 Barataria Bay Waterway East Bank Protection
 State Project No. BA-26

Barataria Bay Waterway East Bank Protection (BA-26)

Federal Sponsor: NRCS
 Construction Completed : 5/2001
 PPL 6

Current Approved O&M Budget	Year 0	Year - 1	Year -2	Year -3	Year -4	Year -5	Year -6	Year -7	Year -8	Year -9	Year -10	Year -11	Year -12	Year -13	Year -14	Year -15	Year -16	Year - 17	Year -18	Year -19	Project Life	Currently	
	FY02	FY03	FY04	FY05	FY06	FY07	FY08	FY09	FY10	FY11	FY12	FY13	FY14	FY15	FY16	FY17	FY18	FY19	FY20	FY21	Budget	Funded	
State O&M																					\$1,228,500	\$1,228,500	
Corps Admin																						\$0	\$0
Federal S&A																						\$0	\$0
Total																						\$1,228,500	\$1,228,500

Projected O&M Expenditures																					Remaining	Current 3-year		
																					Project Life	Budget		
Maintenance Inspection															\$4,159	\$4,267	\$4,378	\$4,492	\$4,609	\$4,728		\$26,633	\$12,804	
General Maintenance																							\$0	\$0
Surveys																							\$0	\$0
Sign Replacement																							\$0	\$0
Federal S&A																							\$0	\$0
Maintenance/Rehabilitation																							\$0	\$0
E&D																							\$0	\$0
Construction																							\$0	\$0
Construction Oversight																							\$0	\$0
Total															\$4,159	\$4,267	\$4,378	\$4,492	\$4,609	\$4,728		\$26,633	\$12,804	

O&M Expenditures from COE Lana Report	\$778,468	Remaining Available O&M Budget	\$387,959	Current Project Life Budget less COE Admin	\$1,228,500
State O&M Expenditures not submitted for in-kind credit	\$0	Current 3-Year Budget	\$12,804	Total Projected Project Life Budget	\$867,174
Federal Sponsor MIPRs (if applicable)	\$62,073	Add'l Funding amount needed thru FY16-FY18	(\$375,155)	Project Life Budget Request Amount	(\$361,326)
Total Estimated O&M Expenditures (as of May 2015)	\$840,541				

Annual Inspection Report
Barataria Bay Waterway East Bank Protection
State Project No. BA-26

Appendix D

Field Inspection Form

MAINTENANCE INSPECTION REPORT CHECK SHEET

Project No. / Name: BA-26 Barataria Waterway (East) Shoreline Protection

Date of Inspection: 6/17/2015

Time: 11:45 am

Structure No. n/a

Inspector(s): Prendergast, Kinler, Hymel

Structure Description: Foreshore Rock Dike

Water Level

Inside: N/A

Outside: 1.34'

Type of Inspection: Annual

Weather Conditions: Mostly sunny, light wind

Item	Condition	Physical Damage	Corrosion	Photo #	Observations and Remarks
Foreshore Rock Dike	Good	None	N/A	1, 2, 3	Minor settlement noted at some locations. No maintenance needs identified at this time.
Settlement Plates	Good	None	None		