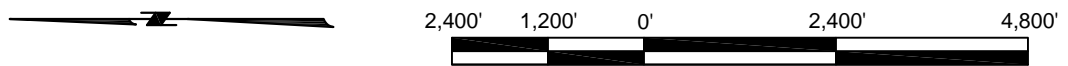


NOTES:

1. AERIAL IMAGE FROM U.S. DEPARTMENT OF AGRICULTURE, NOVEMBER 2007.
2. CURRENTLY PERMITTED UNDER C.U.P. P20101416 AND C.O.E. MVN-2008-03033-ETT.
3. SEE SHEET 2 OF PERMIT MODIFICATION REQUEST NO.1 FOR ADDITIONAL TEMPORARY MOORING AREA DETAILS.
4. COORDINATES IN NAD 83, LOUISIANA STATE PLANE, SOUTH ZONE, U.S. SURVEY FT.



BY	DESCRIPTION	DATE
MTP	CMD/USACE PERMIT MODIFICATION REQUEST 1	08/23 2012



OFFICE OF COASTAL PROTECTION & RESTORATION
 RESTORATION DIVISION
 450 LAUREL STREET
 BATON ROUGE, LOUISIANA 70801

RIVERINE SAND MINING / SCOFIELD ISLAND RESTORATION

ADDITIONAL TEMPORARY MOORING AREA OVERVIEW

DRAWN BY: STEVE DARTEZ

DESIGNED BY: MICHAEL T. POFF, P.E.

APPROVED BY: BARRY RICHARD, P.E.

STATE PROJECT NUMBER: BA-40



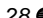
DATE: AUGUST, 2012

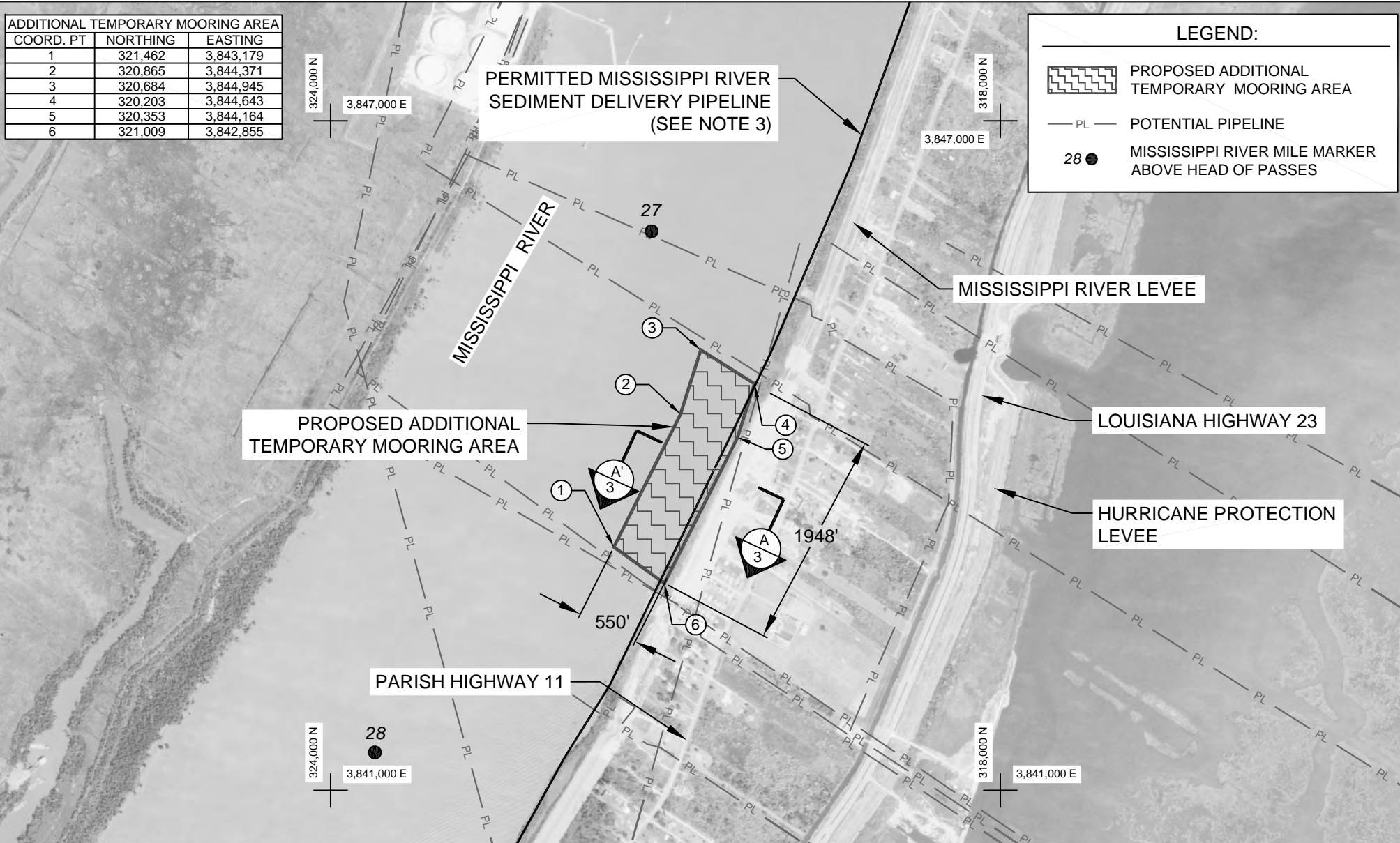
FEDERAL PROJECT NUMBER: BA-40

SHEET 1 OF 5

ADDITIONAL TEMPORARY MOORING AREA		
COORD. PT	NORTHING	EASTING
1	321,462	3,843,179
2	320,865	3,844,371
3	320,684	3,844,945
4	320,203	3,844,643
5	320,353	3,844,164
6	321,009	3,842,855

LEGEND:

-  PROPOSED ADDITIONAL TEMPORARY MOORING AREA
-  PL POTENTIAL PIPELINE
-  28 MISSISSIPPI RIVER MILE MARKER ABOVE HEAD OF PASSES



- NOTES:**
1. AERIAL IMAGE FROM U.S. DEPARTMENT OF AGRICULTURE, NOVEMBER 2007.
 2. COORDINATES IN NAD 83, LOUISIANA STATE PLANE, SOUTH ZONE, U.S. SURVEY FT.
 3. CURRENTLY PERMITTED UNDER C.U.P. P20101416 AND C.O.E. MVN-2008-03033-ETT.

BY	DESCRIPTION	DATE
MTP	CMD/USACE PERMIT MODIFICATION REQUEST 1	08/23 2012

COASTAL ENGINEERING CONSULTANTS, INC

OFFICE OF COASTAL PROTECTION & RESTORATION
 RESTORATION DIVISION
 450 LAUREL STREET
 BATON ROUGE, LOUISIANA 70801

RIVERINE SAND MINING / SCOFIELD ISLAND RESTORATION

STATE PROJECT NUMBER: BA-40

FEDERAL PROJECT NUMBER: BA-40

ADDITIONAL TEMPORARY MOORING AREA PLAN VIEW

DATE: AUGUST, 2012

SHEET 2 OF 5

DRAWN BY: STEVE DARTEZ

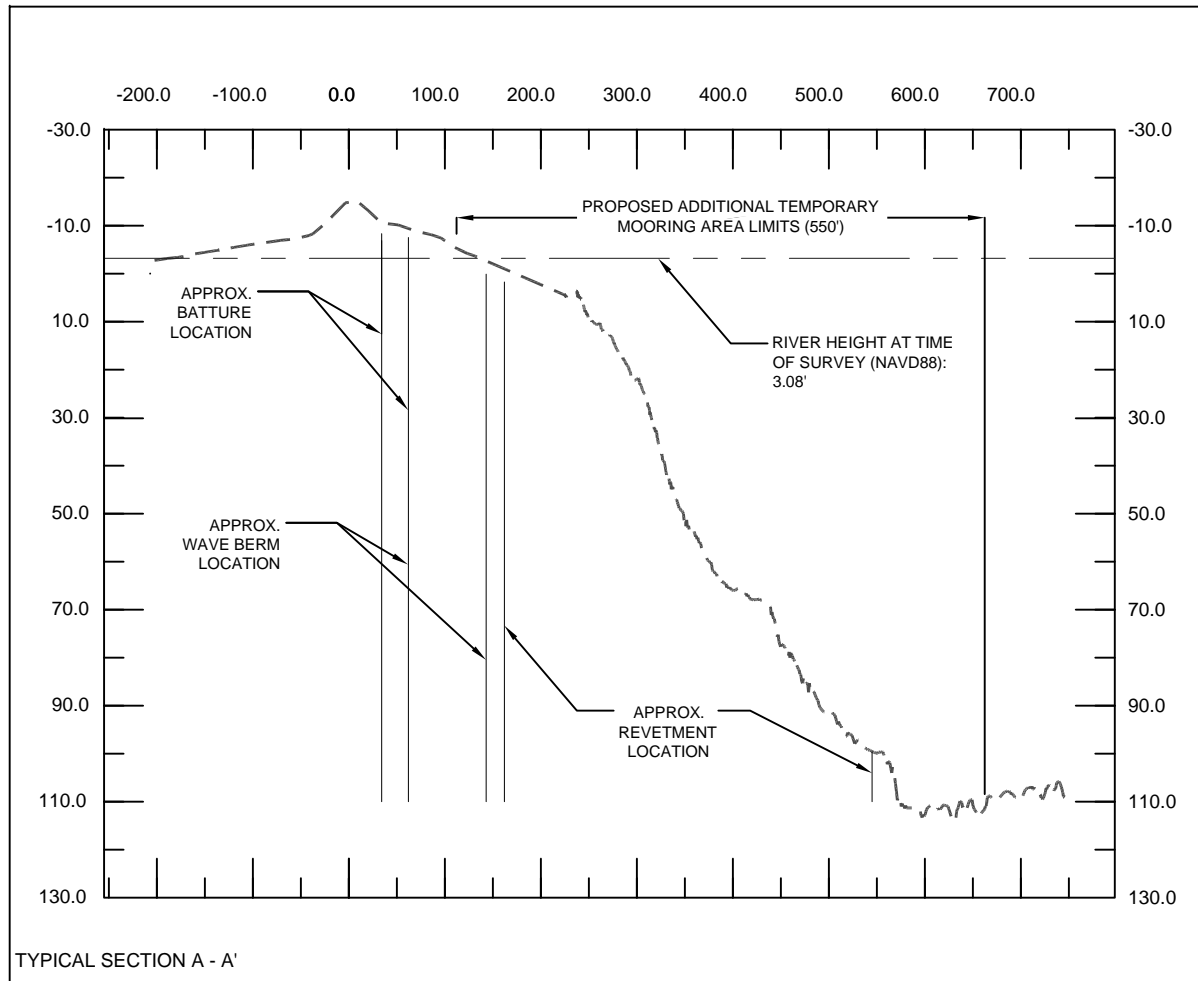
DESIGNED BY: MICHAEL T. POFF, P.E.

APPROVED BY: BARRY RICHARD, P.E.

FEDERAL PROJECT NUMBER: BA-40

SHEET 2 OF 5

SCALE:
H: 1" = 200'
V: 1" = 20'



NOTES:

1. ELEVATIONS ARE NORTH AMERICAN VERTICAL DATUM 1988 (NAVD88), U.S. SURVEY FT.
2. SURVEY PERFORMED BY GREAT LAKES DREDGE AND DOCK COMPANY, JUNE 2012.
3. ANCHORS FOR BOOSTER PUMP STATIONED IN THE PROPOSED ADDITIONAL TEMPORARY MOORING AREA SHALL BE PLACED ON THE WAVE BERM AREA AND BELOW THE REVETMENT PER COORDINATION WITH U.S. ARMY CORPS OF ENGINEERS, OPERATIONS AND PERMITTING DEPARTMENTS, JUNE 6, 2012..
4. ANCHOR LOCATIONS SHALL BE MARKED WITH ANCHOR BUOYS THAT CONFORM TO U.S. COAST GUARD REQUIREMENTS.

BY	DESCRIPTION	DATE
MTP	CMD/USACE PERMIT MODIFICATION REQUEST 1	08/23 2012



OFFICE OF COASTAL PROTECTION & RESTORATION
RESTORATION DIVISION
450 LAUREL STREET
BATON ROUGE, LOUISIANA 70801

RIVERINE SAND MINING / SCOFIELD ISLAND RESTORATION
ADDITIONAL TEMPORARY MOORING AREA TYPICAL SECTION

STATE PROJECT NUMBER: BA-40 DATE: AUGUST, 2012

DRAWN BY: STEVE DARTEZ

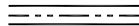
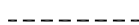


DESIGNED BY: MICHAEL T. POFF, P.E.

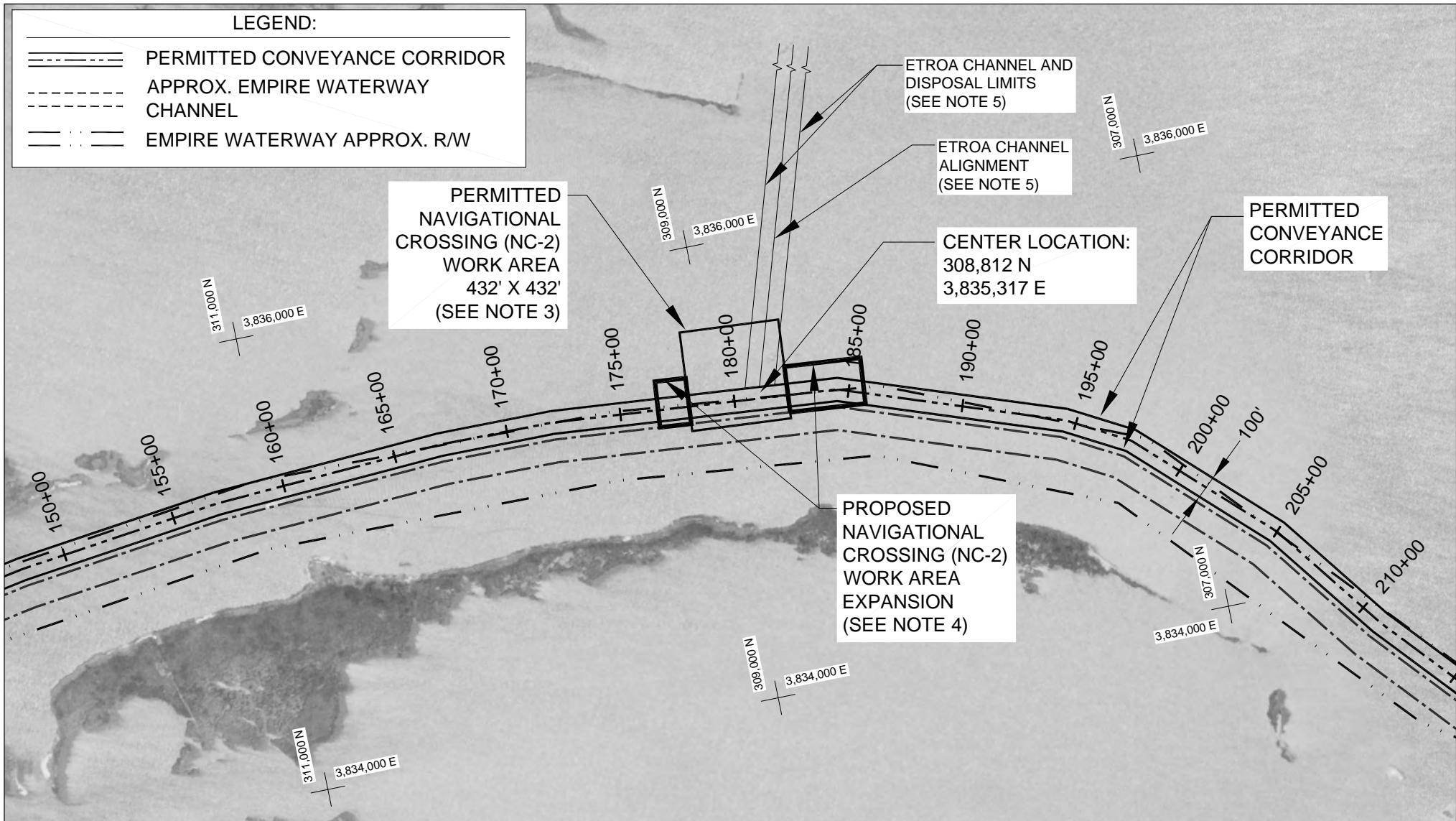
APPROVED BY: BARRY RICHARD, P.E.

FEDERAL PROJECT NUMBER: BA-40

SHEET 3 OF 5

LEGEND:

-  PERMITTED CONVEYANCE CORRIDOR
-  APPROX. EMPIRE WATERWAY CHANNEL
-  CHANNEL
-  EMPIRE WATERWAY APPROX. R/W



NOTES:

1. AERIAL IMAGE FROM U.S. DEPARTMENT OF AGRICULTURE, NOVEMBER 2007.
2. COORDINATES IN NAD 83, LOUISIANA STATE PLANE, SOUTH ZONE, U.S. SURVEY FT.
3. CURRENTLY PERMITTED UNDER C.U.P. P20101416 AND C.O.E. MVN-2008-03033-ETT.
4. NO ADDITIONAL IMPACTS TO NON-VEGETATED WATERBOTTOMS OTHER THAN THOSE PREVIOUSLY PERMITTED. EXPANDED WORK AREA TO BE UTILIZED FOR FIELD FITTING OF CROSSING FOR ETROA PLANNED CHANNEL EXCAVATION UNDER ETROA'S OWN PERMIT.
5. ETROA RESOURCES, LLC. C.U.P. PERMIT APPLICATION NUMBER P2011584.

BY	DESCRIPTION	DATE
MTP	CMD/USACE PERMIT MODIFICATION REQUEST 1	08/23 2012



OFFICE OF COASTAL PROTECTION & RESTORATION
RESTORATION DIVISION
450 LAUREL STREET
BATON ROUGE, LOUISIANA 70801

RIVERINE SAND MINING /
SCOFIELD ISLAND
RESTORATION

STATE PROJECT NUMBER: BA-40

NAVIGATIONAL CROSSING
NO. 2 WORK AREA
EXPANSION

DATE: AUGUST, 2012

DRAWN BY: STEVE DARTEZ

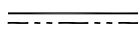
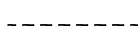

DESIGNED BY: MICHAEL T. POFF, P.E.

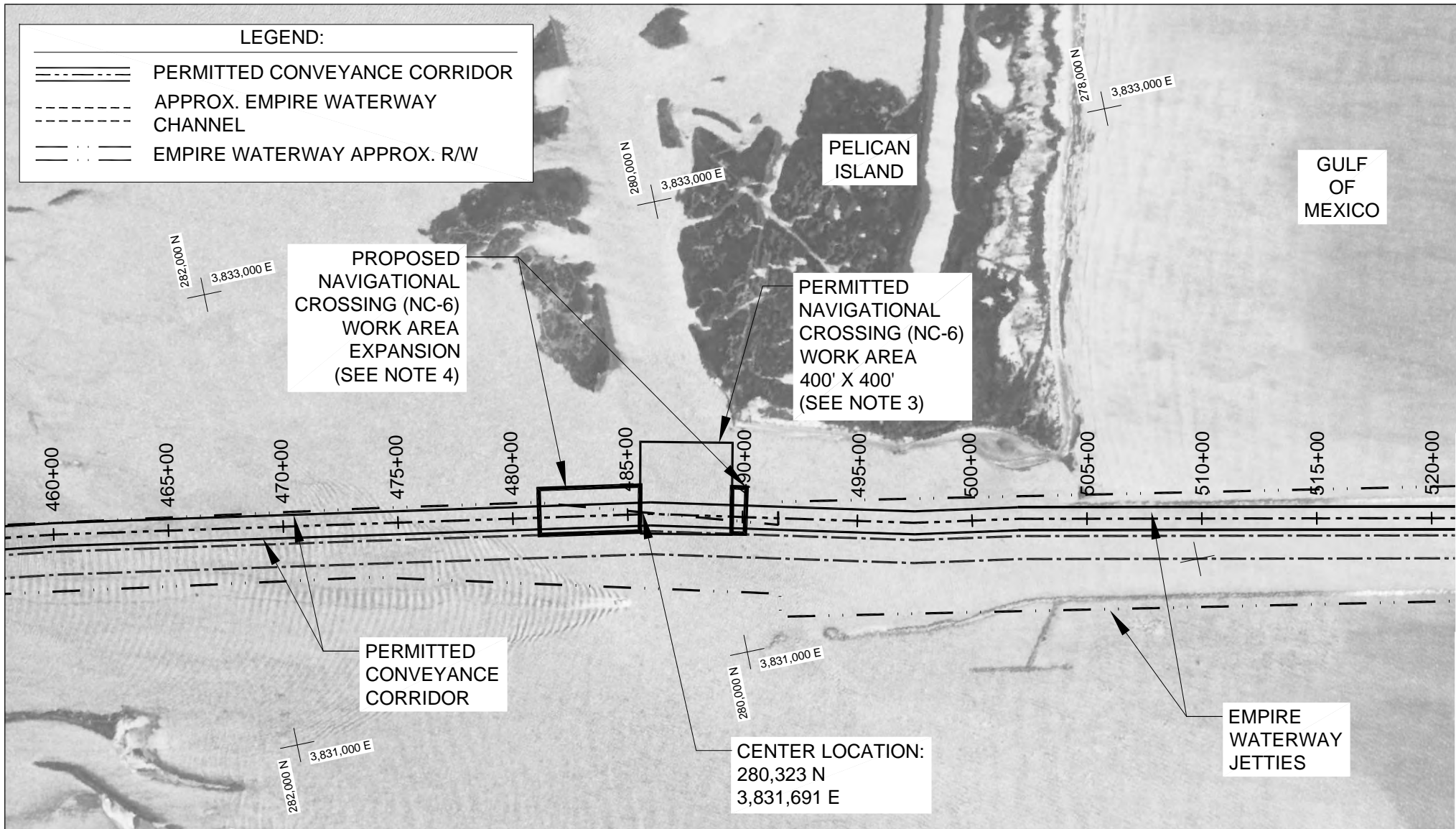
APPROVED BY: BARRY RICHARD, P.E.

FEDERAL PROJECT NUMBER: BA-40

SHEET 4 OF 5

LEGEND:

-  PERMITTED CONVEYANCE CORRIDOR
-  APPROX. EMPIRE WATERWAY CHANNEL
-  EMPIRE WATERWAY APPROX. R/W



NOTES:

1. AERIAL IMAGE FROM U.S. DEPARTMENT OF AGRICULTURE, NOVEMBER 2007.
2. COORDINATES IN NAD 83, LOUISIANA STATE PLANE, SOUTH ZONE, U.S. SURVEY FT.
3. CURRENTLY PERMITTED UNDER C.U.P. P20101416 AND C.O.E. MVN-2008-03033-ETT.
4. NO ADDITIONAL IMPACTS TO NON-VEGETATED WATERBOTTOMS OTHER THAN THOSE PREVIOUSLY PERMITTED. EXPANDED WORK AREA TO BE UTILIZED FOR FIELD FITTING OF CROSSING.



BY	DESCRIPTION	DATE
MTP	CMD/USACE PERMIT MODIFICATION REQUEST 1	08/23 2012



OFFICE OF COASTAL PROTECTION & RESTORATION
 RESTORATION DIVISION
 450 LAUREL STREET
 BATON ROUGE, LOUISIANA 70801

RIVERINE SAND MINING / SCOFIELD ISLAND RESTORATION

STATE PROJECT NUMBER: BA-40

FEDERAL PROJECT NUMBER: BA-40

NAVIGATIONAL CROSSING NO. 6 WORK AREA EXPANSION

DATE: AUGUST, 2012

SHEET 5 OF 5

DRAWN BY: STEVE DARTEZ

DESIGNED BY: MICHAEL T. POFF, P.E.

APPROVED BY: BARRY RICHARD, P.E.

FEDERAL PROJECT NUMBER: BA-40

SHEET 5 OF 5