



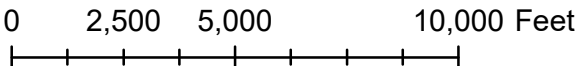
General Notes:

- 1. All submerged pipeline will be layed on the existing water bottom.
- 2. No excavation or dredging is allowed at the BTAB & Bayou Lery Navigational Crossing.
- 3. Submerged pipelines and any anchors securing the pipeline shall rest on the channel and shall be marked in accordance with USCG requirements.



Dredge Pipeline Corridor

**East Delacroix Marsh Creation (BS-0037)
St. Bernard Parish, LA**



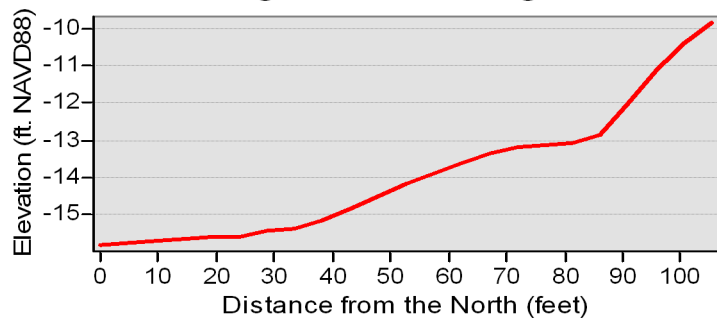
Legend

- Borrow Area
- Marsh Creation Area
- Floating Dredge Pipe
- Navigational Crossing
- Submerged Pipeline
- NPMS_Pipelines

Service Layer Credits: Source: Esri, Maxar, GeoEye, Earthstar Geographics, CNES/Airbus DS, USDA, USGS, AeroGRID, IGN, and the GIS User Community

Bayou Lery

Navigational Crossing



Bayou Lery

General Notes:

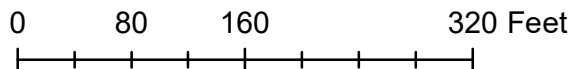
1. Sufficient water depth for recreational boat traffic is provided at the Bayou Lery Crossing. No dredging or excavation is allowed.
2. Submerged pipelines and any anchors securing the pipeline shall rest on the channel and shall be marked in accordance with USCG requirements.

Bayou Terre aux Bouefs



Dredge Pipeline Corridor BTAB & Bayou Lery

East Delacroix Marsh Creation (BS-0037) St. Bernard Parish, LA

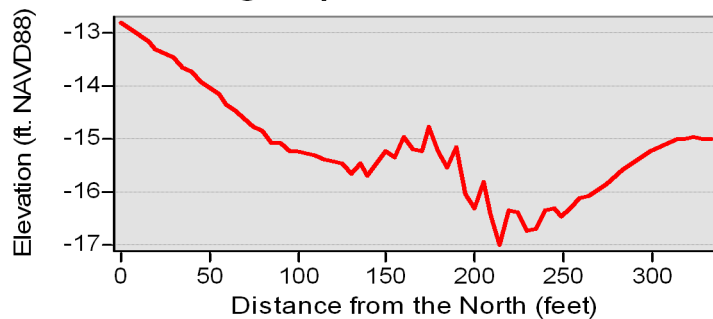


Legend

- Navigational Crossing
- Submerged Pipeline

Service Layer Credits: Source: Esri, Maxar, GeoEye, Earthstar Geographics, CNES/Airbus DS, USDA, USGS, AeroGRID, IGN, and the GIS User Community

Dredge Pipeline Corridor



Submerged Pipeline @ Pipeline Canal

General Notes:

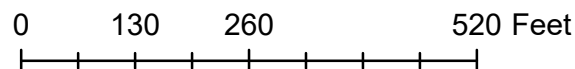
1. Sufficient water depth for recreational boat traffic is provided at the Bayou Terre aux Boeufs/Pipeline Canal Crossing.
2. No dredging or excavation is allowed.
3. Submerged pipelines and any anchors securing the pipeline shall rest on the channel and shall be marked in accordance with USCG requirements.

GULF SOUTH PIPELINE COMPANY, LP



Dredge Pipeline Corridor BTAB/Pipeline Canal

East Delacroix Marsh Creation (BS-0037)
St. Bernard Parish, LA



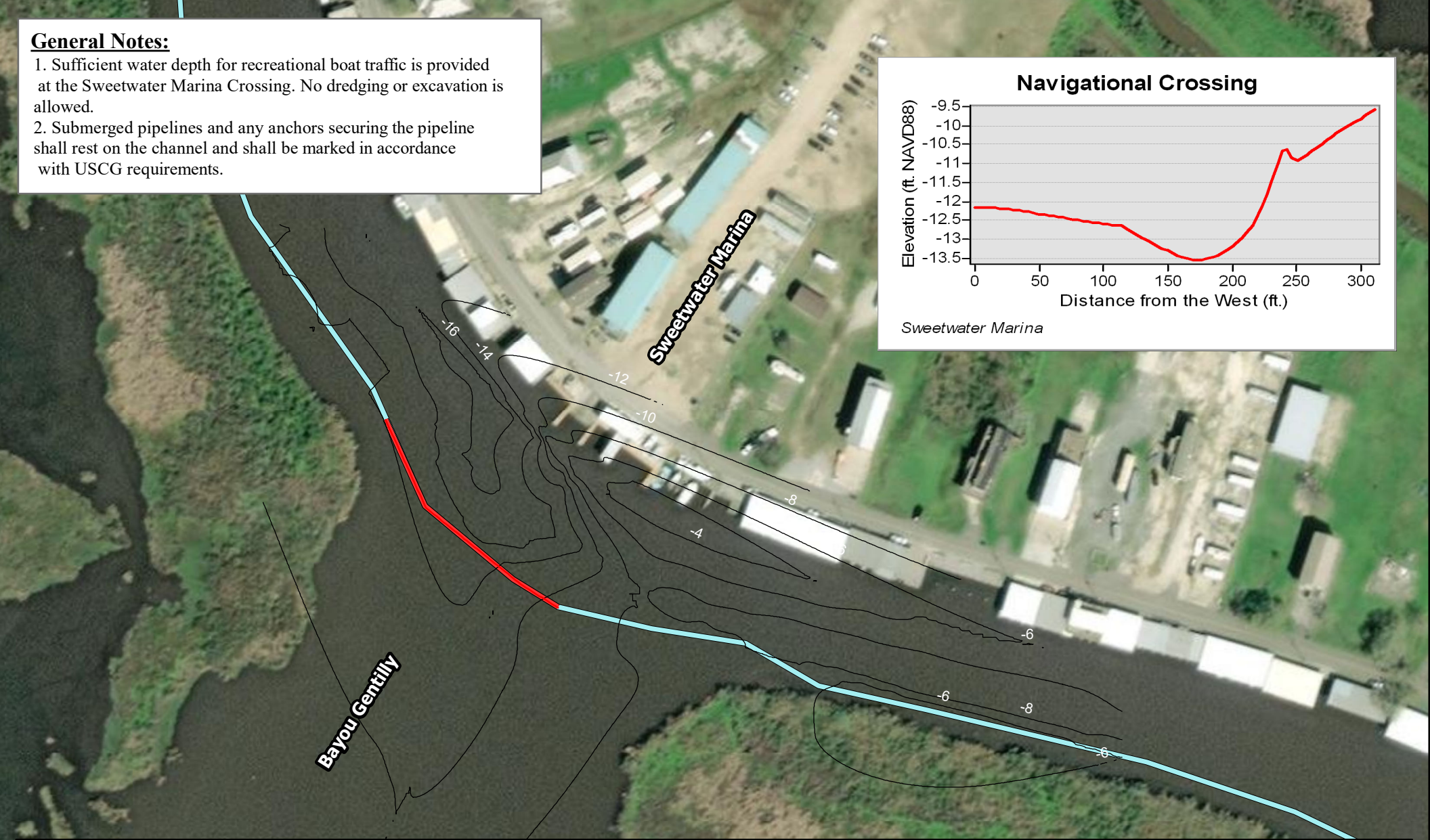
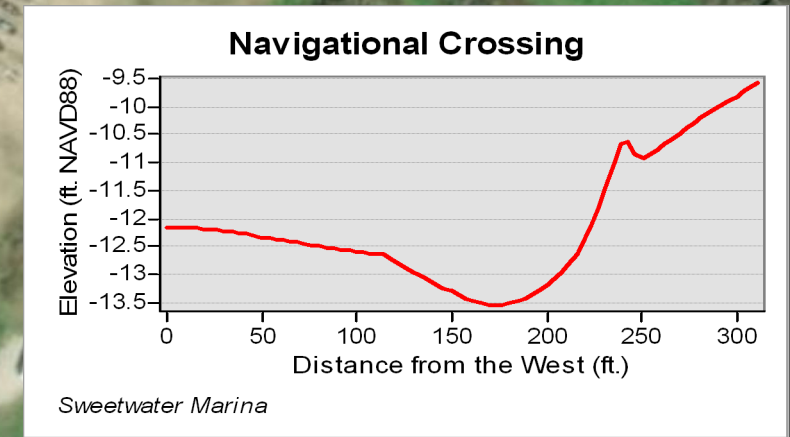
Legend

- Floating Dredge Pipe
- Navigational Crossing
- Submerged Pipeline
- NPMS_Pipelines

Service Layer Credits: Source: Esri, Maxar, GeoEye, Earthstar Geographics, CNES/Airbus DS, USDA, USGS, AeroGRID, IGN, and the GIS User Community

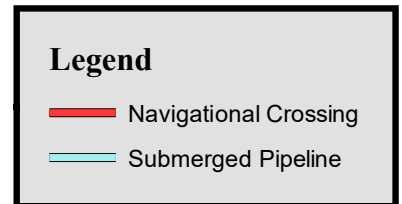
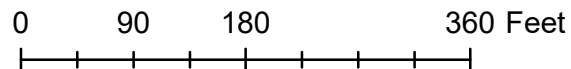
General Notes:

1. Sufficient water depth for recreational boat traffic is provided at the Sweetwater Marina Crossing. No dredging or excavation is allowed.
2. Submerged pipelines and any anchors securing the pipeline shall rest on the channel and shall be marked in accordance with USCG requirements.

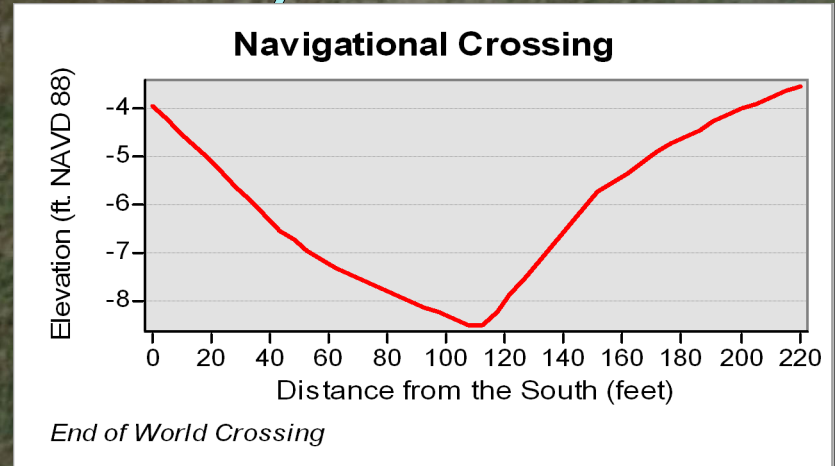
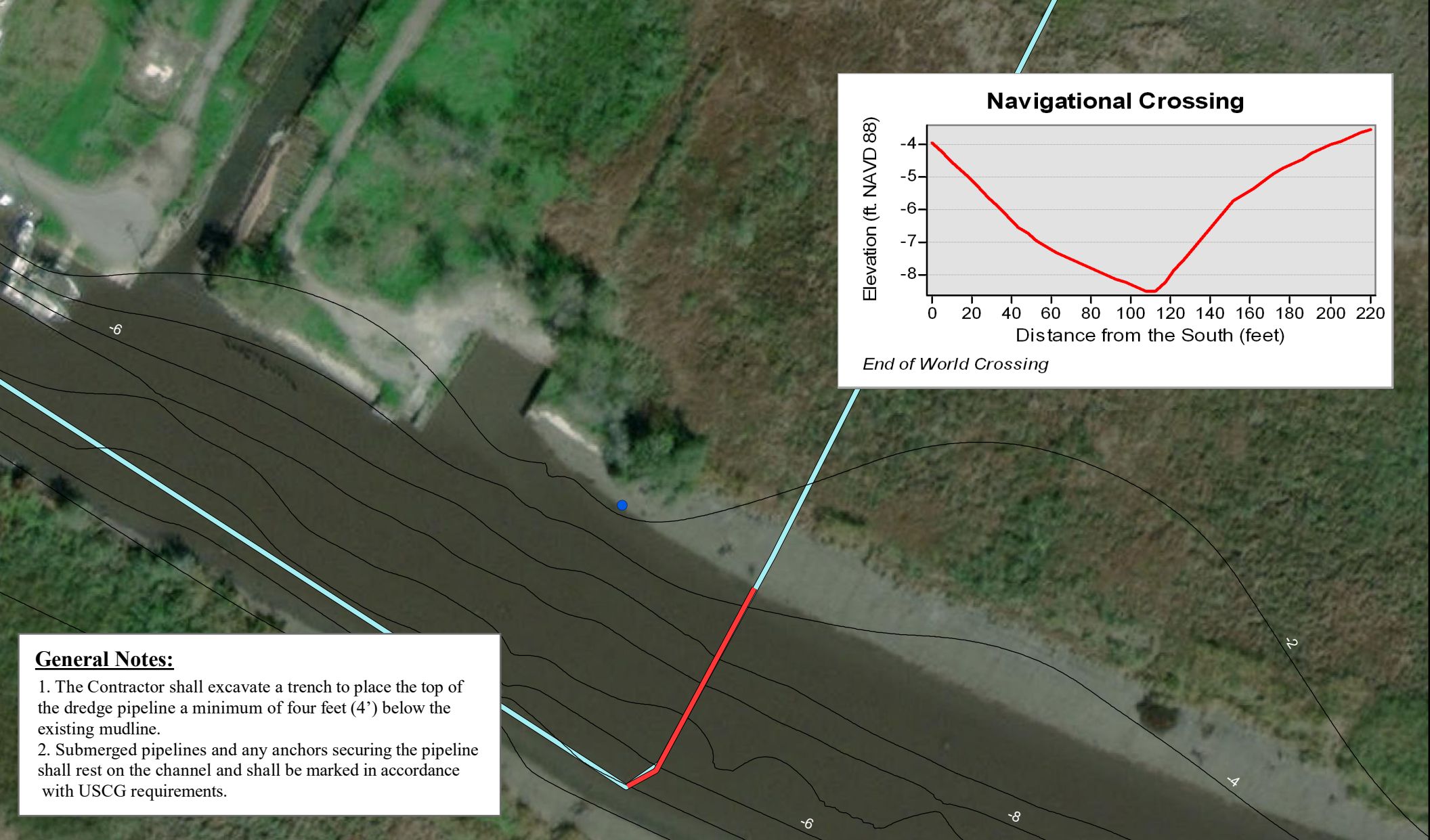


Dredge Pipeline Corridor BTAB & Sweetwater Marina

East Delacroix Marsh Creation (BS-0037) St. Bernard Parish, LA



Service Layer Credits: Source: Esri, Maxar, GeoEye, Earthstar Geographics, CNES/Airbus DS, USDA, USGS, AeroGRID, IGN, and the GIS User Community



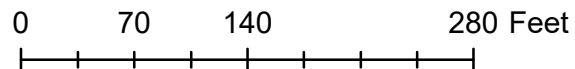
General Notes:

1. The Contractor shall excavate a trench to place the top of the dredge pipeline a minimum of four feet (4') below the existing mudline.
2. Submerged pipelines and any anchors securing the pipeline shall rest on the channel and shall be marked in accordance with USCG requirements.



Dredge Pipeline Corridor BTAB & End of World

East Delacroix Marsh Creation (BS-0037)
St. Bernard Parish, LA



Legend

- Hardened Gage Tower (structure)
- Buried Pipe
- Dredge Pipeline

Service Layer Credits: Source: Esri, Maxar, GeoEye, Earthstar Geographics, CNES/Airbus DS, USDA, USGS, AeroGRID, IGN, and the GIS User Community