

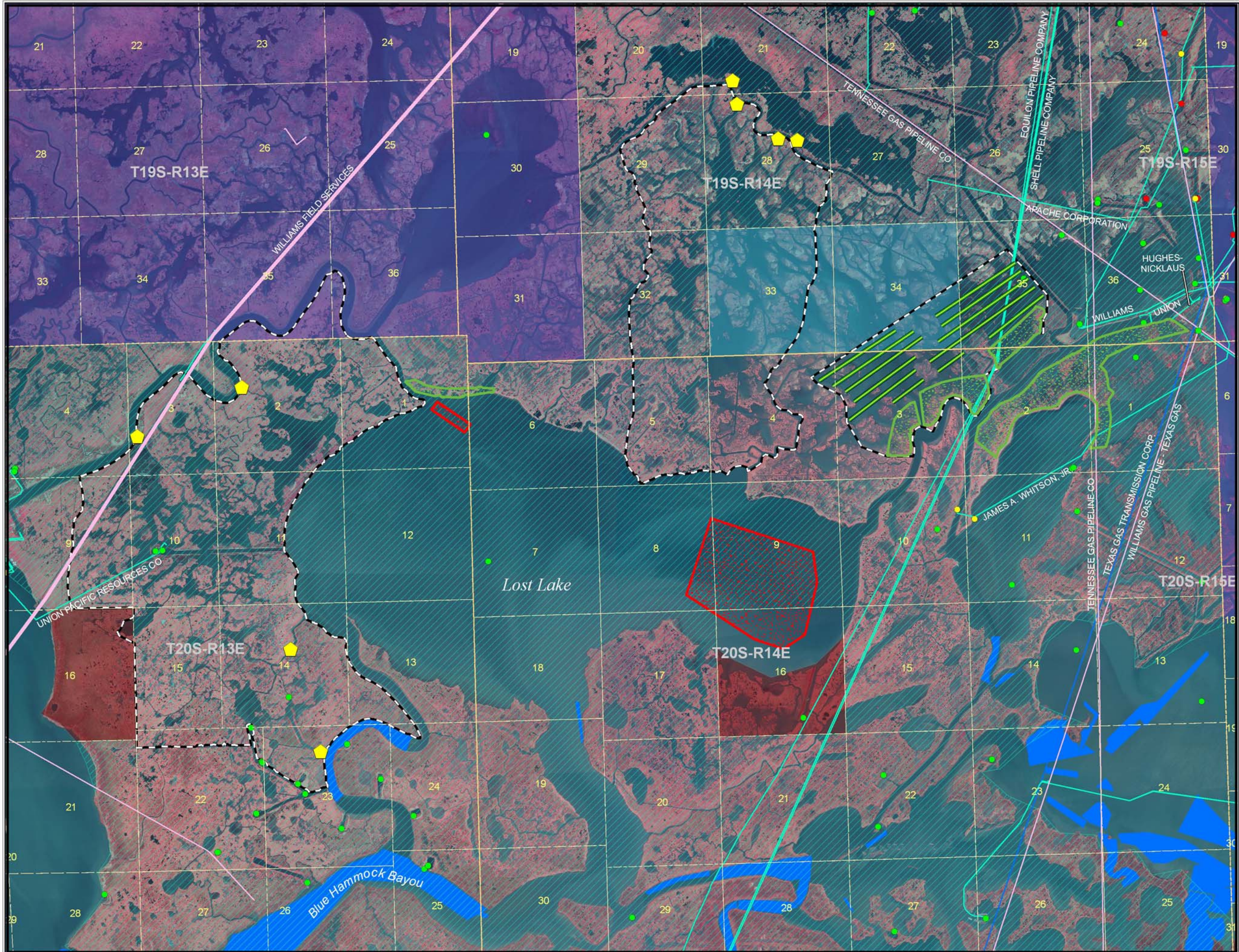
APPENDIX E

FURNISHED "Exhibit A" SHOWING POTENTIAL KNOWN PIPELINES

Exhibit A

Lost Lake Marsh Creation and Hydrologic Restoration (TE-72)

Terrebonne Parish, Louisiana



	Township/Range
	Section
TE-72 Proposed Boundary/Infrastructure	
	Project Boundary
	Marsh Creation
	Borrow Site
	Water Control Structure
	Terrace
Additional Infrastructure	
	Oyster Lease
	CMD Pipelines
	NPMS Pipelines
	LGS Pipelines
Wells	
	Active
	Orphan
	Other
	Shut-In
	Inactive
OWNER	
	Apache Louisiana Minerals Inc
	Steinberg, Julien et al
	Terrebonne School Board (Sec. 16)
	LL&E A wholly Owned Subsidiary of Burlington Resources Inc

All features are graphical representations only and may not reflect true location or dimension



Source: Office of Coastal Protection and Restoration
 Imagery: 2008 DOQQ
 Map Date: September 8, 2010
 File path: //2010040352