



**Coastal Protection and Restoration
Authority of Louisiana**

**Office of Coastal Protection and
Restoration**

**2010/2011 Annual Inspection
Report**

for

**BOSTON CANAL/VERMILION
BAY SHORE RESTORATION
PROJECT
(TV-09)**

State Project Number TV-09
Priority Project List 2

April 12, 2011
Vermilion Parish

Prepared by:

Dion Broussard, Engineering Intern
Mel Guidry, Engineering Tech.
CPRA/ Office of Coastal Protection and Restoration
Lafayette Field Office
635 Cajundome Blvd.
Lafayette, LA 70596

Table of Contents

I. Introduction.....	1
II. Inspection Purpose and Procedures	1
III. Project Description and History.....	1
IV. Summary of Past Operation and Maintenance Projects.....	2
V. Inspection Results	2
VI. Conclusions and Recommendations	3

Appendices

Appendix A	Project Features Map
Appendix B	Photographs
Appendix C	Three Year Budget Projections
Appendix D	Field Inspection Notes
Appendix E	Map showing areas to be monitored

I. Introduction

The Boston Canal/Vermilion Bay Shore Restoration Project consists of approximately 466 acres of brackish marsh and open water. It is located in Vermilion Parish, approximately 12 miles south of Delcambre, LA on the northern bank of Vermilion Bay and at the mouth of Boston Canal. It is bounded on the south by Vermilion Bay, on the west by Mud Point, and on the east by Oaks Canal. (See Appendix A).

The Boston Canal/Vermilion Bay Shore Restoration Project was authorized by Section 303(a) of Title III Public Law 101-646, the Coastal Wetlands Planning Protection and Restoration Act (CWPPRA) enacted on November 29, 1990 as amended and approved on the second Priority Project List. The Boston Canal/Vermilion Bay Shore Restoration Project has a twenty year (20 year) economic life, which began in October 1995.

II. Inspection Purpose and Procedures

The purpose of the annual inspection of the Boston Canal/Vermilion Bay Shore Restoration Project (TV-09) is to evaluate the constructed project features to identify any deficiencies and prepare a report detailing the condition of project features and recommended corrective actions needed. Should it be determined that corrective actions are needed, OCPR shall provide, in the report, a detailed cost estimate for engineering, design, supervision, inspection, and construction contingencies, and an assessment of the urgency of such repairs (O&M Plan, 2002). The annual inspection report also contains a summary of maintenance projects, if any, which were completed since completion of constructed project features and an estimated projected budget for the upcoming three (3) years for operation, maintenance and rehabilitation. The three (3) year projected operation and maintenance budget is shown in Appendix C.

An inspection of the Boston Canal/Vermilion Bay Shore Restoration Project (TV-09) was held on April 12, 2011 under sunny and cool temperatures. In attendance were Dion Broussard, Mel Guidry and Darrell Pontiff of (OCPR). NRCS was represented by Loland Broussard and Charles Slocum. Parties met at the Lafayette Field Office of CED and proceeded to the TV-09 project area. The annual inspection began at approximately 11:40 am.

The field inspection included a complete visual inspection of all features. Staff gauge readings were used, when available, to determine approximate elevations of water, rock dikes, earthen embankments, and other project features. Photographs were taken at each project feature (see Appendix B) and Field Inspection notes were completed in the field to record measurements and deficiencies (see Appendix D).

III. Project Description and History

The Boston Canal Project involves the installation and maintenance of approximately 1,405 linear feet of foreshore rock dike along the northern bank of Vermilion Bay and both east and

west banks of Boston Canal at its convergence with Vermilion Bay. Also included is the installation of approximately 34,000 plantings of smooth cordgrass (~14 miles) along the northern bank of Vermilion Bay between Mud Point and Oaks Canal. The purpose of the project is to maintain the integrity of approximately 466 acres of wetlands in the vicinity of Boston Canal by stabilizing the northern bank of the Vermilion Bay shoreline and to prevent further regression of the banks at the mouth of Boston Canal.

The principal project features include:

- 1 - Approximately 1,405 linear feet of rock breakwater on the northern bank Vermilion Bay at the mouth of the Boston Canal in Vermilion Parish
- 2 - Approximately 1100 linear feet of sediment fencing which consists of all lumber, hardware and woven geotextile fabric and placed within the confines of the rock breakwaters.
- 3 - Approximately 34,000 smooth cord grass plants planted between Mud Point and Oaks Canal along the northern shoreline of Vermilion Bay.

IV. Summary of Past Operation and Maintenance Projects

General Maintenance: Below is a summary of completed maintenance projects and operation tasks performed since October 1995, the construction completion date of the Boston Canal/Vermilion Bay Shore Protection Project.

Maintenance Project – Loland Broussard: This maintenance project included the modification of the sediment trapping fences constructed behind the rock dikes by Loland Broussard of NRCS in concurrence with LDNR and at no cost to CWPPRA on March 7, 2002. Modification of the fences involved cutting the geotextile panels from the top of the fence down to approx. 6" below the mud line (~ 30") and removing the panel. The 4x4 wooden posts were not disturbed and left intact. The reinforcement wire behind each panel was severely deteriorated and virtually non-existent. The southern most fences were preventing sediment from filling the entire area behind the dikes. Since the fences have been removed, sediment has been more evenly distributed. Vegetation continues to increase.

Structure Operations: There are no operations associated with this project.

V. Inspection Results

Rock Dikes

For the most part, the rock dikes are in excellent post construction condition. The water was extremely low at the time of the inspection and there is no apparent toe scour or rock displacement. The shoreline at the western end of the western dike where it ties into the

Vermilion Bay shoreline has not significantly worsened. A small gap left during original construction appears to have caused this problem. While the situation is similar on the southeast tie-in, it is not as severe. No gap was left on this end during construction. Recommendations made to repair these gaps during the O & M inspection of June 2003 have been reconsidered due to costs and logistics associated with such repairs. These areas have been and will continue to be closely monitored, and should the situation significantly worsen, steps will be taken to close/stabilize these areas. Signage and associated pilings are stable and functioning. (Photos: Appendix B, Photos 1 - 3)

Sediment Fencing

The sediment fencing has been removed as stated in Section IV above.

Smooth Cordgrass plantings

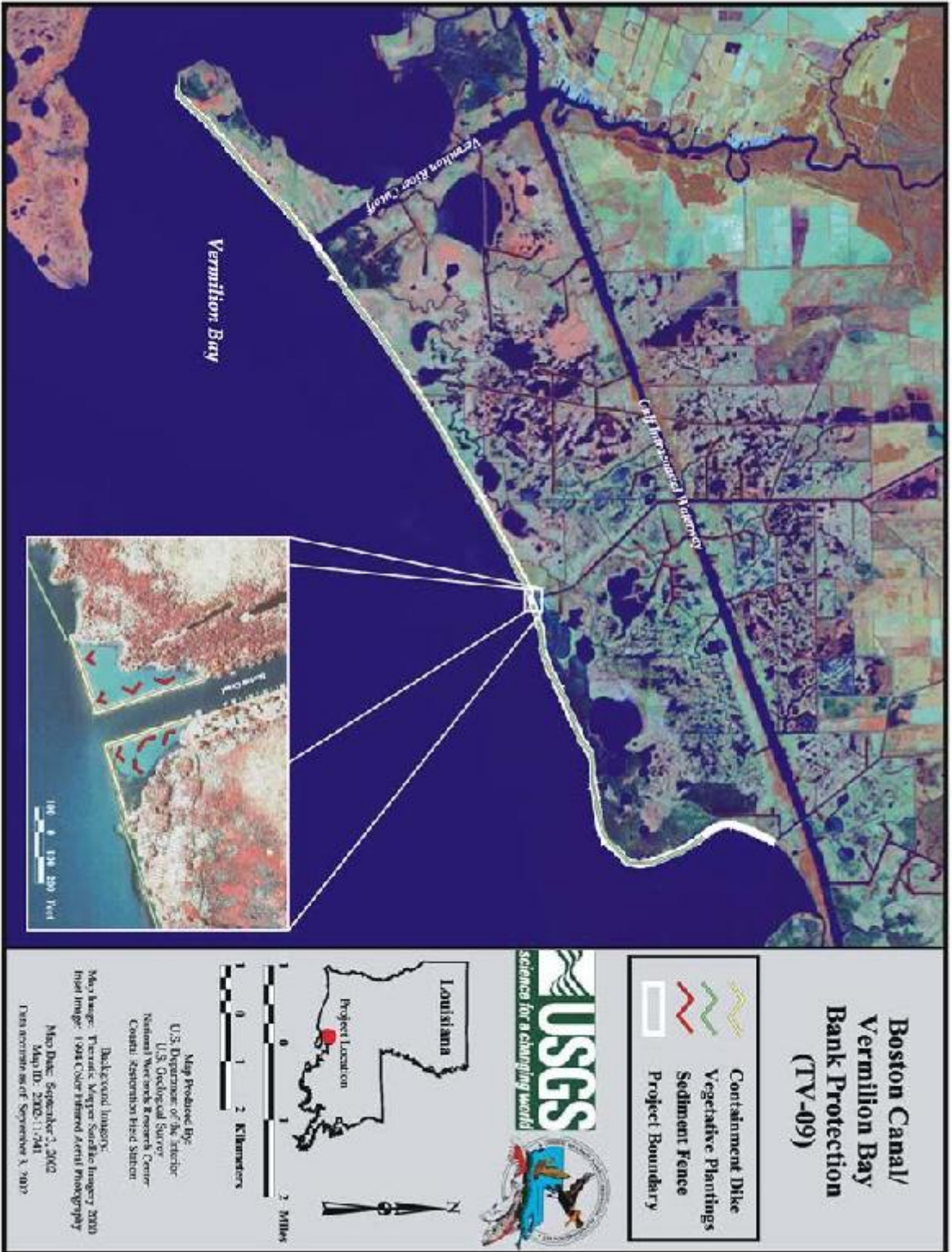
The shoreline plantings were not directly inspected on this trip due to time and wave constraints. All vegetation in the area adjacent to the mouth of the Boston Canal, including the vegetation behind the rock dikes, is in good condition. (Photos: Appendix B, Photo 4)

VI. Conclusions and Recommendations

The Boston Canal/Vermilion Bay Shore Restoration Project is in good condition and functioning as intended. Installation of a staff gauge in the vicinity is recommended. Maintenance items to be addressed in CY 2011:

- Install staff gauge

Appendix A
Project Features Map



Appendix B

Photographs



Photo No. 1, View of Boston Canal at the bay shore looking South



Photo No. 2, Close up view of the rock dike and vegetation behind the dike



Photo No. 3, View of eastern rock dike



Photo No. 4, Typical view of vegetative plantings along the bay shore

Appendix C

Three Year Budget Projection

Annual Inspection Report
 BOSTON CANAL/VERMILION BAY SHORE RESTORATION PROJECT
 State Project No. TV-09

BOSTON CANAL/ TV-09 / PPL 2
Three-Year Operations & Maintenance Budgets 07/01/2011 - 06/30/2014

<u>Project Manager</u> Darrell Pontiff	<u>O & M Manager</u> Mel Guidry	<u>Federal Sponsor</u> NRCS	<u>Prepared By</u> Mel Guidry
---	--	--------------------------------	----------------------------------

	2011/2012 (-16)	2012/2013 (-17)	2013/2014 (-18)
Maintenance Inspection	\$ 6,086.00	\$ 6,269.00	\$ 6,457.00
Structure Operation			
State Administration		\$ -	\$ -
Federal Administration		\$ -	\$ -

Maintenance/Rehabilitation

11/12 Description: Install staff gage

E&D	
Construction	\$7,500.00
Construction Oversight	
<i>Sub Total - Maint. And Rehab.</i>	<u>\$ 7,500.00</u>

12/13 Description

E&D	\$ -
Construction	\$ -
Construction Oversight	\$ -
<i>Sub Total - Maint. And Rehab.</i>	<u>\$ -</u>

13/14 Description:

E&D	\$ -
Construction	\$ -
Construction Oversight	\$ -
<i>Sub Total - Maint. And Rehab.</i>	<u>\$ -</u>

	2011/2012 (-16)	2012/2013 (-17)	2013/2014 (-18)
Total O&M Budgets	<u>\$ 13,586.00</u>	<u>\$ 6,269.00</u>	<u>\$ 6,457.00</u>

O & M Budget (3 yr Total)	<u>\$ 26,312.00</u>
Unexpended O & M Budget	<u>\$ 136,159.00</u>
Remaining O & M Budget (Projected)	<u>\$ 109,847.00</u>

Appendix D
Field Inspection Form

Annual Inspection Report
 BOSTON CANAL/VERMILION BAY SHORE RESTORATION PROJECT
 State Project No. TV-09

MAINTENANCE INSPECTION REPORT CHECK SHEET					
Project No. / Name:		Boston Canal/Vermilion Bay Bank Protecti		Date of Inspection: April 12, 2011 Time: 11:40 a.m.	
Structure No.		Inspector(s): Dion Broussard, Darrell Pontiff , Mel Guidry (OCPR) Loland Broussard, Charles Slocum (NRCS)			
Structure Description:		Rock Dike		Water Level Inside: _____ Outside: _____	
Type of Inspection:		Annual		Weather Conditions: sunny and cool temperatures	
Item	Condition	Physical Damage	Corrosion	Photo #	Observations and Remarks
Steel Bulkhead / Caps	N/A				
Steel Grating	N/A				
Stop Logs	N/A				
Hardware	N/A				
Timber Piles	N/A				
Timber Wales	N/A				
Galv. Pile Caps	N/A				
Cables	N/A				
Signage /Supports	Good				
Rock Dike	Excellent			1,2,3	Southeast and southwest tie-ins not significantly worse. Will be monitored.
Vegetative Plantings	N/A			4	Not directly inspected on this trip.
What are the conditions of the existing levees?					
Are there any noticeable breaches?					
Settlement of rock plugs and rock weirs?					
Position of stoplogs at the time of the inspection?					
Are there any signs of vandalism?					

Appendix E

Locations to be Monitored