



**Coastal Protection and Restoration
Authority of Louisiana**

**Office of Coastal Protection and
Restoration**

**2008/2009 Annual Inspection
Report**

for

**SEDIMENT TRAPPING AT THE
JAWS PROJECT
(TV-15)**

State Project Number TV-15
Priority Project List 9

September 30, 2008
St. Mary Parish

Prepared by:

Stan Aucoin, Engineering Tech.
CPRA/ Office of Coastal Protection and Restoration
Lafayette Field Office
635 Cajundome Blvd.
Lafayette, LA 70596

Table Of Contents

I. Introduction.....	1
II. Inspection Purpose and Procedures	1
III. Project Description and History.....	1
IV. Summary of Past Operation and Maintenance Projects.....	2
V. Inspection Results	2
VI Conclusions and Recommendations	3

Appendices

Appendix A	Project Features Map
Appendix B	Photographs
Appendix C	Three Year Budget Projections
Appendix D	Field Inspection Notes
Appendix E	Map showing areas to be monitored

I. Introduction

The Sediment Trapping at the Jaws Project (State Project No. TV-15) is located in the Teche/Vermilion Basin in the northeastern corner of West Cote Blanche Bay in St. Mary Parish near the intersection of the Charenton Drainage Canal and the bay. This area is known as “The Jaws”. (See Appendix A).

The Sediment Trapping at the Jaws Project was authorized by Section 303(a) of Title III Public Law 101-646, the Coastal Wetlands Planning Protection and Restoration Act (CWPPRA) enacted on November 29, 1990 as amended and approved on the ninth Priority Project List. The Sediment Trapping at the Jaws Project has a twenty year (20 year) economic life, which began in December 2004.

II. Inspection Purpose and Procedures

The purpose of the annual inspection of the Sediment Trapping at the Jaws Project (T/V-15) is to evaluate the constructed project features to identify any deficiencies and prepare a report detailing the condition of project features and recommended corrective actions needed. Should it be determined that corrective actions are needed, OCPR shall provide, in the report, a detailed cost estimate for engineering, design, supervision, inspection, and construction contingencies, and an assessment of the urgency of such repairs (O&M Plan, 2005). The annual inspection report also contains a summary of maintenance projects which were completed since completion of constructed project features and an estimated projected budget for the upcoming three (3) years for operation, maintenance and rehabilitation. The three (3) year projected operation and maintenance budget is shown in Appendix C. A summary of past operation and maintenance projects completed since completion of the Sediment Trapping at the Jaws Project are outlined in Section IV.

In 2003, the CWPPRA Task Force determined, due to the fact that OCPR was responsible for the operation and maintenance phase of the vast majority of CWPPRA projects, that OCPR would be the responsible party for all Post Storm/Hurricane Assessments. After Hurricane Ike, every project appeared to have been impacted by the storms; therefore, OCPR determined that all projects should be assessed for damages (Broussard, 2006). With concurrence from the federal sponsor, OCPR has decided to use the information obtained during this post hurricane assessment in this Annual Maintenance Inspection.

An inspection of the Sediment Trapping at the Jaws Project (TV-15) was held on September 30, 2008 under mostly cloudy skies and mild temperatures. In attendance were Stan Aucoin, and Mel Guidry from OCPR Lafayette; John Foret from NOAA Fisheries; and Dale Garber from NRCS (for other inspections). The annual inspection began at the northern most terrace.

The field inspection included a visual inspection of randomly selected areas of the project site. Staff gauge readings, when available, and existing temporary benchmarks were used to determine approximate elevations of water and terraces. Photographs were taken (see

Appendix B) and Field Inspection notes were completed in the field to record measurements and deficiencies (see Appendix D).

III. Project Description and History

Construction of the Gulf Intracoastal Waterway (GIWW) in the 1920's provided a connection between the Atchafalaya River and the project area resulting in major hydrologic changes. As the holding capacity of the Atchafalaya Basin decreased, more and more freshwater was forced down the river's main channel, Wax Lake Outlet, and the GIWW. The result was what was once considered to be brackish marsh converted to fresh.

Sediment laden water from the Atchafalaya River gets to the project area via the GIWW as well as through West Cote Blanche Bay from the Atchafalaya Delta and Wax Lake outlet during strong southeasterly wind events. Construction of the terraces provides protection to the northern shoreline of West Cote Blanche Bay by reducing fetch and turbidity. The channels used to construct the terraces provide a conduit directing sediment rich waters from the GIWW into the project area building additional acres of marsh.

The principal project features include:

- ~38,700 linear feet of earthen terraces in "The Jaws"
- ~38,500 vegetative plantings

IV. Summary of Past Operation and Maintenance Projects

General Maintenance: Below is a summary of completed maintenance projects and operation tasks performed since December 2004, the construction completion date of the Sediment Trapping at the Jaws Project.

No maintenance has been required on this project.

Structure Operations: There are no active operations associated with this project.

V. Inspection Results

Earthen Terraces/Vegetation

The terraces appear to be in good condition and do not appear to have suffered any damages from Hurricane Ike. Settlement on the ends of the terraces, furthest from the main channel of the Jaws, is significant but still functional. Warning signs were all in place and stable. Since water levels were slightly elevated, submerged and emergent

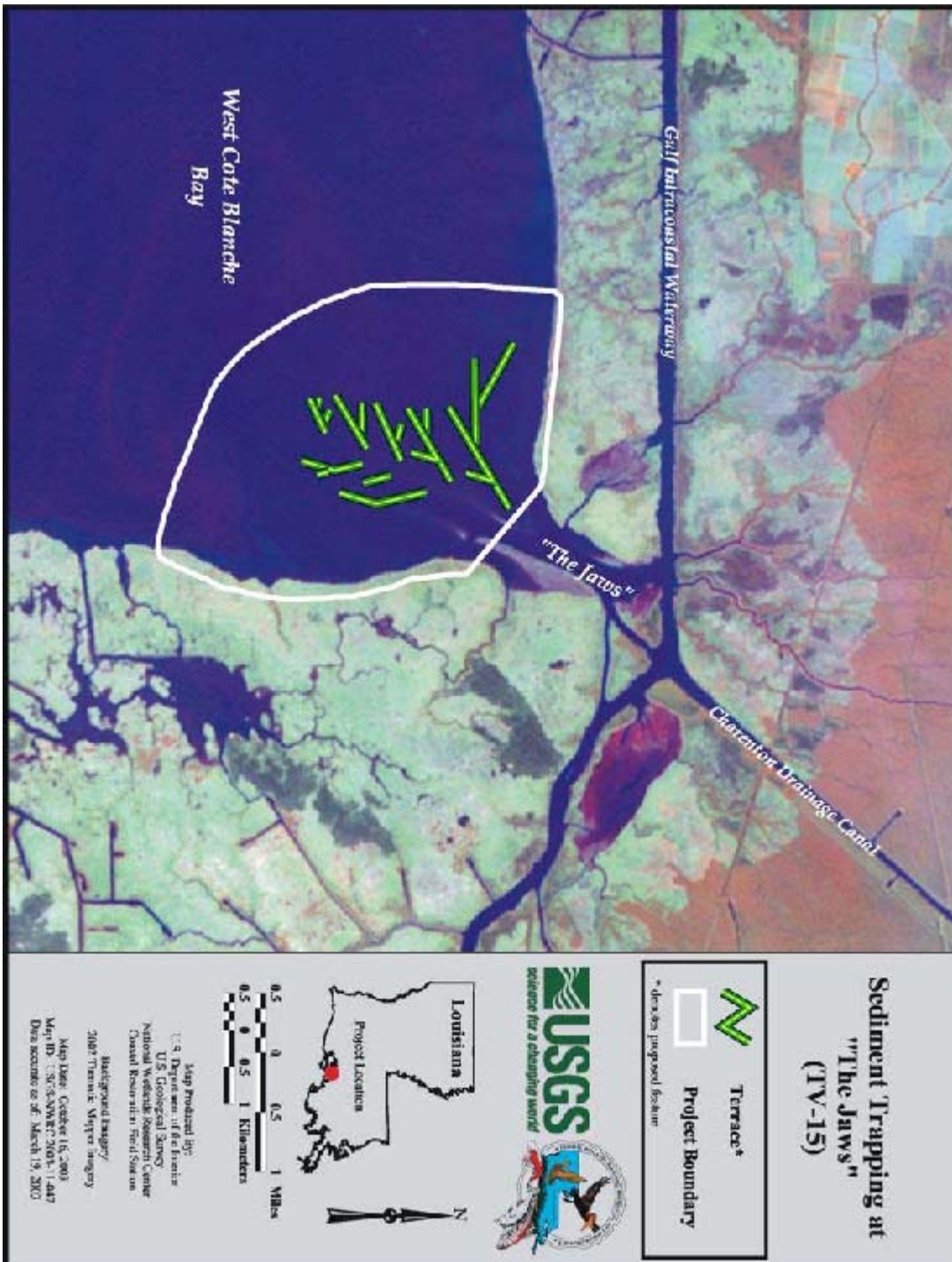
aquatic vegetation between the terraces wasn't as visible as during last year's inspection but still exists. Channels remain fairly clear. No need for any maintenance at this time. (Photos: Appendix B, Photos 1–2)

VI. Conclusions and Recommendations

The Sediment Trapping at the Jaws Project is in excellent condition and functioning as designed. There is no need for any maintenance at this time. Possible maintenance items in 2009/2010:

- Re-establish an accurate staff gauge in the area

Appendix A
Project Features Map



Appendix B

Photographs



Photo No. 1, typical terrace



Photo No. 2, typical terrace and warning sign

Appendix C

Three Year Budget Projection

SEDIMENT TRAPPING AT THE JAWS/ TV15 / PPL 6
Three-Year Operations & Maintenance Budgets 07/01/2009 - 06/30/2012

<u>Project Manager</u> Stan Aucoin	<u>O & M Manager</u> Stan Aucoin	<u>Federal Sponsor</u> N/A	<u>Prepared By</u> Stan Aucoin
---------------------------------------	---	-------------------------------	-----------------------------------

	2009/2010	2010/2011	2011/2012
Maintenance Inspection	\$ 5,737.00	\$ 5,909.00	\$ 6,086.00
Structure Operation			
Administration		\$ -	\$ -
Maintenance/Rehabilitation			

09/10 Description:

E&D	
Construction	
Construction Oversight	
<i>Sub Total - Maint. And Rehab.</i>	\$ -

10/11 Description:

E&D	\$ -
Construction	\$ -
Construction Oversight	\$ -
<i>Sub Total - Maint. And Rehab.</i>	\$ -

11/12 Description:

E&D	\$ -
Construction	\$ -
Construction Oversight	\$ -
<i>Sub Total - Maint. And Rehab.</i>	\$ -

	2009/2010	2010/2011	2011/2012
Total O&M Budgets	\$ 5,737.00	\$ 5,909.00	\$ 6,086.00

O & M Budget (3 yr Total)	\$ 17,732.00
Unexpended O & M Budget	\$ 243,607.00
Remaining O & M Budget (Projected)	\$ 225,875.00

Appendix D

Field Inspection Form

Annual Inspection Report
 SEDIMENT TRAPPING AT THE JAWS PROJECT
 State Project No. TV-15

MAINTENANCE INSPECTION REPORT CHECK SHEET

Project No. / Name: TV-15 Sediment Trapping at the Jaws

Date of Inspection: September 30, 2008

Time:

Structure No. N/A

Inspector(s): Stan Aucoin, Mel Guidry (OCPR)
 Dale Garber (NRCS); John Foret (NMFS)

Structure Description: Terraces/Vegetation

Water Level Inside: Outside:
 Weather Conditions: Cloudy and Clear

Type of Inspection: Annual

Item	Condition	Physical Damage	Corrosion	Photo #	Observations and Remarks
Steel Bulkhead / Caps	N/A				
Steel Grating	N/A				
Stop Logs	N/A				
Hardware	N/A				
Timber Piles	N/A				
Timber Wales	N/A				
Galv. Pile Caps	N/A				
Vegetation	Good				
Signage / Supports	Good			2	
Rip Rap (fill)	N/A				
Earthen Embankment (terraces)	Excellent			1,2	Terraces are in good condition. No repairs needed.

What are the conditions of the existing levees?
 Are there any noticeable breaches?
 Settlement of rock plugs and rock weirs?
 Position of stoplogs at the time of the inspection?
 Are there any signs of vandalism?

Appendix E

Locations to be Monitored