



**State of Louisiana
Department of Natural Resources
Coastal Restoration Division**

**2006/2007 Annual Inspection
Report**

**Barataria Bay Waterway East
Bank Protection
(BA-26)**

State Project Number BA-26
Priority Project List 6

July 18, 2007
Jefferson Parish

Prepared by:

Barry Richard, E.I.
Peter Hopkins, P.E.
LDNR/CED
New Orleans Field Office
CERM, Suit 309
2045 Lakeshore Dr.
New Orleans, La 70122

Table of Contents

I. Introduction.....	1
II. Inspection Purpose and Procedures	1
III. Project Description and History.....	1
IV. Summary of Past operation and Maintenance Projects	2
V. Inspection Results	2
VI. Conclusions and Recommendations	2

Appendices

Appendix A	Project Features Map
Appendix B	Photographs
Appendix C	Three Year Budget Projections
Appendix D	Field Inspection Form

I. Introduction

The Barataria Bay Waterway East Bank Protection Project (BA-26) encompasses 2,790 acres (880 ha) brackish marsh and open water habitat on the east bank of the Barataria Bay Waterway located in the Barataria Basin, Jefferson Parish, Louisiana approximately 1.5 miles south of Lafitte. The Project is bounded by the Barataria Bay Waterway to the west, Barataria Bay Shoreline to the east and Bayou Dupont to the north (Appendix A).

II. Inspection Purpose and Procedures

The purpose of the annual inspection of the Barataria Bay Waterway East Bank Protection Project (BA-26) is to evaluate the constructed project features to identify any deficiencies and prepare a report detailing the condition of project features and recommended corrective actions needed. Should it be determined that corrective actions are needed, LDNR shall provide, in the report, a detailed cost estimate for engineering, design, supervision, inspection, and construction contingencies, and an assessment of the urgency of such repairs (O&M Plan August 9, 2002). The annual inspection report also contains a summary of maintenance projects and an estimated projected budget for the upcoming three (3) years for operation, maintenance and rehabilitation. The three (3) year projected operation and maintenance budget is shown in Appendix C. A summary of past operation and maintenance projects completed since completion of the project are outlined in Section II.

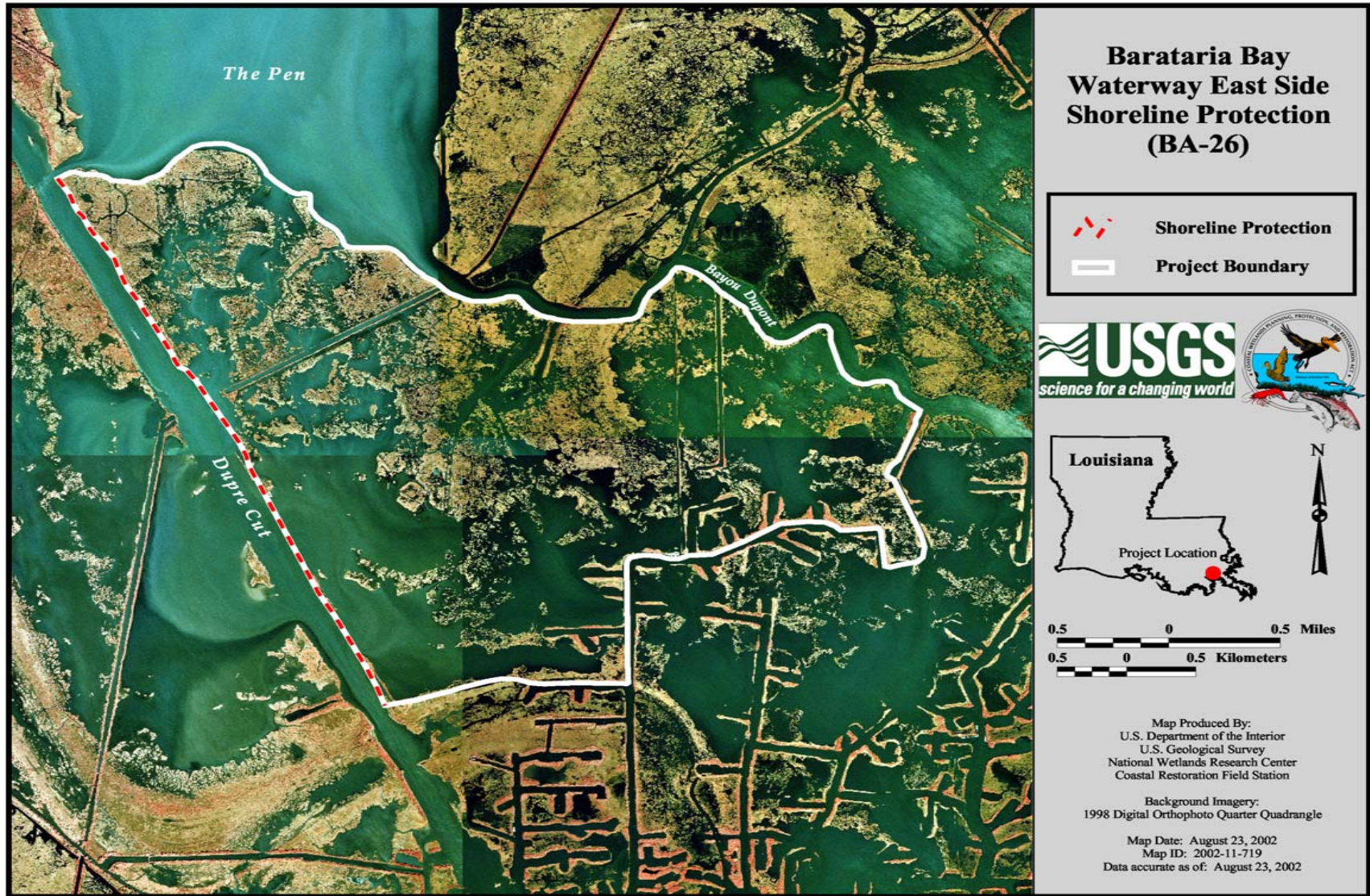
An inspection of the Barataria Bay Waterway East Bank Protection Project (BA-26) was held on March 20, 2007 by George Boddie, Barry Richard, Tom Bernard, and Peter Hopkins from LDNR; Warren Blanchard of NRCS. There was a light wind, clear sky, and the tide gage, which is located approximately 0.8 miles north of C&M Marina on the east bank of the Barataria Bay Waterway, read +0.88-ft. NAVD-88. Photographs of that inspection are included in Appendix B of this report.

III. Project Description and History

The Barataria Bay Waterway East Bank Protection Project includes approximately 17,100 linear feet (3.2 miles) of foreshore rock dike bank line protection and an earthen hydrologic barrier created from dredged material from the Barataria Bay Waterway Channel placed to the East along the rock dike within the project area. The rock structure was constructed with a synthetic clay core to reduce its overall weight. The clay material was encapsulated in geotextile bags and placed along the centerline of the dike. The dike is intended to protect the adjacent marsh, and to re-establish the eastern bank of the Barataria Bay Waterway, from unnatural water exchange and subsequent erosion which is exacerbated by wakes from vessel traffic on the waterway.

Annual Inspection Report
Barataria Bay Waterway East Bank Protection
State Project No. BA-26

Appendix A
Project Features Map



Annual Inspection Report
Barataria Bay Waterway East Bank Protection
State Project No. BA-26

Appendix B

Photographs

Annual Inspection Report
Barataria Bay Waterway East Bank Protection
State Project No. BA-26



Photo #1 – Shoreline Protection. Rock structure, note occasional debris.



Photo No. 2 – Shoreline Protection.



Photo No. 3 – Small gap in Shoreline Protection.

Annual Inspection Report
Barataria Bay Waterway East Bank Protection
State Project No. BA-26

Appendix C

Three Year Budget Projection

Annual Inspection Report
 Barataria Bay Waterway East Bank Protection
 State Project No. BA-26

Barataria Bay Waterway East Bank Protection / BA-26 / PPL 6
Three-Year Operations & Maintenance Budgets 07/01/2007 - 06/30/2010

=	<u>Project Manager</u> Barry Richard	<u>O & M Manager</u> Barry Richard	<u>Federal Sponsor</u> NRCS	<u>Prepared By</u> Peter Hopkins
	2007/2008	2008/2009	2009/2010	
Maintenance Inspection	\$3,387.00	\$3,475.00	\$3,565.00	
General Maintenance	\$0.00	\$0.00	\$0.00	
Structure Operation	\$0.00	\$0.00	\$0.00	
Administration	\$0.00	\$0.00	\$0.00	
Maintenance/Rehabilitation				

07/08 Description:

E&D	\$0.00
Construction	\$0.00
Construction Oversight	\$0.00
Sub Total - Maint. And Rehab.	\$ -

08/09 Description:

E&D	\$0.00
Construction	\$0.00
Construction Oversight	\$0.00
Sub Total - Maint. And Rehab.	\$ -

09/10 Description:

E&D	\$0.00
Construction	\$0.00
Construction Oversight	\$0.00
Sub Total - Maint. And Rehab.	\$ -

	2007/2008	2008/2009	2009/2010
Total O&M Budgets	\$ 3,387.00	\$ 3,475.00	\$ 3,565.00

O & M Budget (3 yr Total)	\$ 10,427.00
Unexpended O & M Budget	\$ 461,075.24
Remaining O & M Budget (Projected)	\$ 450,648.24

Annual Inspection Report
 Barataria Bay Waterway East Bank Protection
 State Project No. BA-26

OPERATION AND MAINTENANCE BUDGET WORKSHEET 2007/2008
 Barataria Bay Waterway East Bank Protection / BA-26 / PPL 6

DESCRIPTION	UNIT	EST. QTY.	UNIT PRICE	ESTIMATED TOTAL
O&M Inspection and Report	EACH	1	\$3,387.00	\$3,387.00
General Structure Maintenance	LUMP	1	\$0.00	\$0.00
Engineering and Design	LUMP	1	\$0.00	\$0.00
Operations Contract	LUMP	1	\$0.00	\$0.00
Construction Oversight	LUMP	1	\$0.00	\$0.00
ADMINISTRATION				
LDNR / CRD Admin.	LUMP	0	\$0.00	\$0.00
FEDERAL SPONSER Admin.	LUMP	0	\$0.00	\$0.00
SURVEY Admin.	LUMP	0	\$0.00	\$0.00
OTHER				\$0.00
TOTAL ADMINISTRATION COSTS:				\$0.00

MAINTENANCE / CONSTRUCTION

SURVEY				
SURVEY DESCRIPTION:				
Secondary Monument	EACH	0	\$0.00	\$0.00
Staff Gauge / Recorders	EACH	0	\$0.00	\$0.00
Marsh Elevation / Topography	LUMP	0	\$0.00	\$0.00
TBM Installation	EACH	0	\$0.00	\$0.00
OTHER				\$0.00
TOTAL SURVEY COSTS:				\$0.00

GEOTECHNICAL				
GEOTECH DESCRIPTION:				
Borings	EACH	0	\$0.00	\$0.00
OTHER				\$0.00
TOTAL GEOTECHNICAL COSTS:				\$0.00

CONSTRUCTION					
CONSTRUCTION DESCRIPTION:					
Rip Rap	LIN FT	TON / FT	TONS	UNIT PRICE	
	0	0.0	0	\$0.00	\$0.00
	0	0.0	0	\$0.00	\$0.00
	0	0.0	0	\$0.00	\$0.00
Filter Cloth / Geogrid Fabric	SQ YD	0	\$0.00	\$0.00	\$0.00
Navigation Aid	EACH	0	\$0.00	\$0.00	\$0.00
Signage	EACH	0	\$0.00	\$0.00	\$0.00
General Excavation / Fill	CU YD	0	\$0.00	\$0.00	\$0.00
Dredging	CU YD	0	\$0.00	\$0.00	\$0.00
Sheet Piles (Lin Ft or Sq Yds)		0	\$0.00	\$0.00	\$0.00
Timber Piles (each or lump sum)		0	\$0.00	\$0.00	\$0.00
Timber Members (each or lump sum)		0	\$0.00	\$0.00	\$0.00
Hardware	LUMP	1	\$0.00	\$0.00	\$0.00
Materials	LUMP	1	\$0.00	\$0.00	\$0.00
Mob / Demob	LUMP	1	\$0.00	\$0.00	\$0.00
Contingency	LUMP	1	\$0.00	\$0.00	\$0.00
General Structure Maintenance	LUMP	1	\$0.00	\$0.00	\$0.00
OTHER				\$0.00	\$0.00
OTHER				\$0.00	\$0.00
OTHER				\$0.00	\$0.00
TOTAL CONSTRUCTION COSTS:					\$0.00

TOTAL OPERATIONS AND MAINTENANCE BUDGET: \$3,387.00

Annual Inspection Report
 Barataria Bay Waterway East Bank Protection
 State Project No. BA-26

OPERATION AND MAINTENANCE BUDGET WORKSHEET 2008/2009
 Barataria Bay Waterway East Bank Protection / BA-26 / PPL 6

DESCRIPTION	UNIT	EST. QTY.	UNIT PRICE	ESTIMATED TOTAL
O&M Inspection and Report	EACH	1	\$3,475.00	\$3,475.00
General Structure Maintenance	LUMP	1	\$0.00	\$0.00
Engineering and Design	LUMP	1	\$0.00	\$0.00
Operations Contract	LUMP	1	\$0.00	\$0.00
Construction Oversight	LUMP	1	\$0.00	\$0.00
ADMINISTRATION				
LDNR / CRD Admin.	LUMP	0	\$0.00	\$0.00
FEDERAL SPONSER Admin.	LUMP	0	\$0.00	\$0.00
SURVEY Admin.	LUMP	0	\$0.00	\$0.00
OTHER				\$0.00
TOTAL ADMINISTRATION COSTS:				\$0.00

MAINTENANCE / CONSTRUCTION

SURVEY				
SURVEY DESCRIPTION:				
Secondary Monument	EACH	0	\$0.00	\$0.00
Staff Gauge / Recorders	EACH	0	\$0.00	\$0.00
Marsh Elevation / Topography	LUMP	0	\$0.00	\$0.00
TBM Installation	EACH	0	\$0.00	\$0.00
OTHER				\$0.00
TOTAL SURVEY COSTS:				\$0.00

GEOTECHNICAL				
GEOTECH DESCRIPTION:				
Borings	EACH	0	\$0.00	\$0.00
OTHER				\$0.00
TOTAL GEOTECHNICAL COSTS:				\$0.00

CONSTRUCTION					
CONSTRUCTION DESCRIPTION:					
Rip Rap	LIN FT	TON / FT	TONS	UNIT PRICE	
	0	0.0	0	\$0.00	\$0.00
	0	0.0	0	\$0.00	\$0.00
	0	0.0	0	\$0.00	\$0.00
Filter Cloth / Geogrid Fabric	SQ YD	0	\$0.00	\$0.00	\$0.00
Navigation Aid	EACH	0	\$0.00	\$0.00	\$0.00
Signage	EACH	0	\$0.00	\$0.00	\$0.00
General Excavation / Fill	CU YD	0	\$0.00	\$0.00	\$0.00
Dredging	CU YD	0	\$0.00	\$0.00	\$0.00
Sheet Piles (Lin Ft or Sq Yds)		0	\$0.00	\$0.00	\$0.00
Timber Piles (each or lump sum)		0	\$0.00	\$0.00	\$0.00
Timber Members (each or lump sum)		0	\$0.00	\$0.00	\$0.00
Hardware	LUMP	1	\$0.00	\$0.00	\$0.00
Materials	LUMP	1	\$0.00	\$0.00	\$0.00
Mob / Demob	LUMP	1	\$0.00	\$0.00	\$0.00
Contingency	LUMP	1	\$0.00	\$0.00	\$0.00
General Structure Maintenance	LUMP	1	\$0.00	\$0.00	\$0.00
OTHER				\$0.00	\$0.00
OTHER				\$0.00	\$0.00
OTHER				\$0.00	\$0.00
TOTAL CONSTRUCTION COSTS:					\$0.00

TOTAL OPERATIONS AND MAINTENANCE BUDGET: \$3,475.00

Annual Inspection Report
 Barataria Bay Waterway East Bank Protection
 State Project No. BA-26

OPERATION AND MAINTENANCE BUDGET WORKSHEET 2009/2010
 Barataria Bay Waterway East Bank Protection / BA-26 / PPL 6

DESCRIPTION	UNIT	EST. QTY.	UNIT PRICE	ESTIMATED TOTAL
O&M Inspection and Report	EACH	1	\$3,565.00	\$3,565.00
General Structure Maintenance	LUMP	1	\$0.00	\$0.00
Engineering and Design	LUMP	1	\$0.00	\$0.00
Operations Contract	LUMP	1	\$0.00	\$0.00
Construction Oversight	LUMP	1	\$0.00	\$0.00
ADMINISTRATION				
LDNR / CRD Admin.	LUMP	0	\$0.00	\$0.00
FEDERAL SPONSER Admin.	LUMP	0	\$0.00	\$0.00
SURVEY Admin.	LUMP	0	\$0.00	\$0.00
OTHER				\$0.00
TOTAL ADMINISTRATION COSTS:				\$0.00

MAINTENANCE / CONSTRUCTION

SURVEY

SURVEY DESCRIPTION:	UNIT	EST. QTY.	UNIT PRICE	ESTIMATED TOTAL
Secondary Monument	EACH	0	\$0.00	\$0.00
Staff Gauge / Recorders	EACH	0	\$0.00	\$0.00
Marsh Elevation / Topography	LUMP	0	\$0.00	\$0.00
TBM Installation	EACH	0	\$0.00	\$0.00
OTHER				\$0.00
TOTAL SURVEY COSTS:				\$0.00

GEOTECHNICAL

GEOTECH DESCRIPTION:	UNIT	EST. QTY.	UNIT PRICE	ESTIMATED TOTAL
Borings	EACH	0	\$0.00	\$0.00
OTHER				\$0.00
TOTAL GEOTECHNICAL COSTS:				\$0.00

CONSTRUCTION

CONSTRUCTION DESCRIPTION:	UNIT	EST. QTY.	UNIT PRICE	ESTIMATED TOTAL
Rip Rap	LIN FT	0	\$0.00	\$0.00
	TON / FT	0.0	\$0.00	\$0.00
	TONS	0	\$0.00	\$0.00
		0	\$0.00	\$0.00
Filter Cloth / Geogrid Fabric	SQ YD	0	\$0.00	\$0.00
Navagation Aid	EACH	0	\$0.00	\$0.00
Signage	EACH	0	\$0.00	\$0.00
General Excavation / Fill	CU YD	0	\$0.00	\$0.00
Dredging	CU YD	0	\$0.00	\$0.00
Sheet Piles (Lin Ft or Sq Yds)		0	\$0.00	\$0.00
Timber Piles (each or lump sum)		0	\$0.00	\$0.00
Timber Members (each or lump sum)		0	\$0.00	\$0.00
Hardware	LUMP	1	\$0.00	\$0.00
Materials	LUMP	1	\$0.00	\$0.00
Mob / Demob	LUMP	1	\$0.00	\$0.00
Contingency	LUMP	1	\$0.00	\$0.00
General Structure Maintenance	LUMP	1	\$0.00	\$0.00
OTHER				\$0.00
OTHER				\$0.00
OTHER				\$0.00
TOTAL CONSTRUCTION COSTS:				\$0.00

TOTAL OPERATIONS AND MAINTENANCE BUDGET: \$3,565.00

Annual Inspection Report
Barataria Bay Waterway East Bank Protection
State Project No. BA-26

Appendix D

Field Inspection Form

