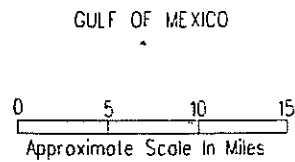
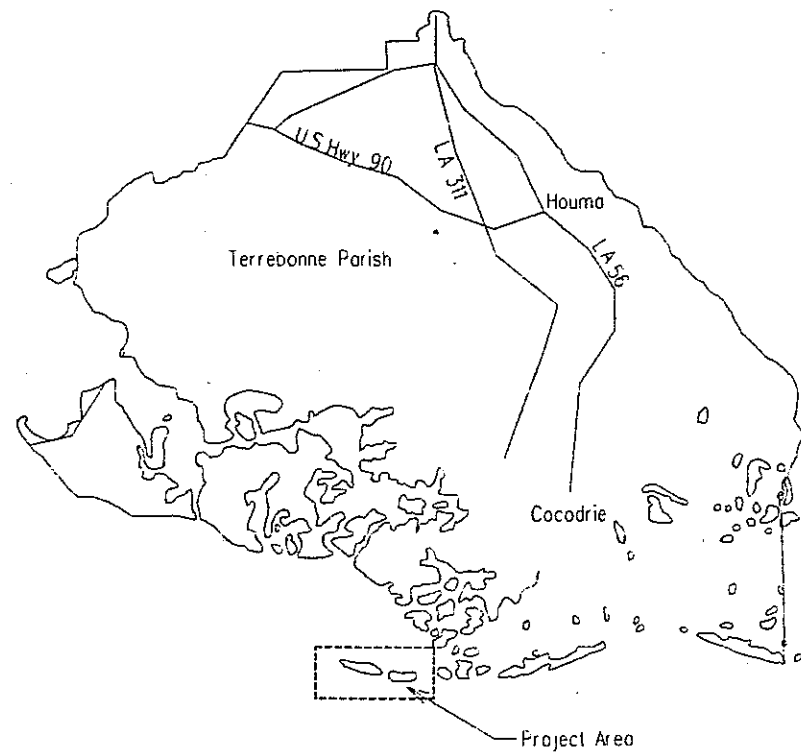
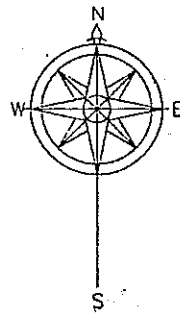


Raccoon Island Breakwater Demonstration Project
(PTE - 15 VII, TE - 29)

Built Under The Coastal Wetlands Planning,
Protection And Restoration Act Of
Public Law 101-646

By
Louisiana Department Of Natural Resources
With The Assistance Of
Natural Resources Conservation Service
Of The
United States Department Of Agriculture
1997



LEGEND

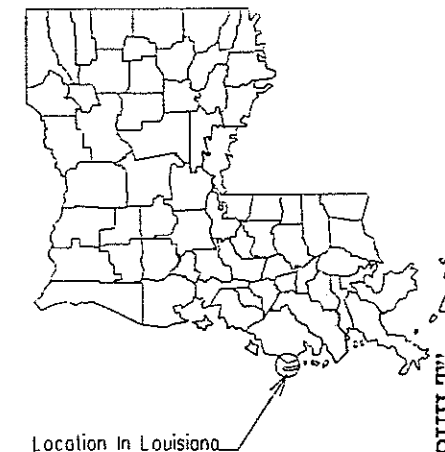
- US 90 US Highway
- LA 24 Louisiana State Highway
- Project Area

INDEX TO DRAWINGS

Sheet No.	Description
1	Cover Sheet
2	Plan Map
3	Breakwater Details

"AS-BUILT PLANS"

SUBMITTED BY: Dale A. Smith 10/1/97
GOVERNMENT REPRESENTATIVE DATE
APPROVED BY: Paul H. Stutes 11/2/97
REGISTERED STATE CONSERVATION ENGINEER DATE
John M. Moore 11-4-97
STATE CONSERVATION ENGINEER DATE



Location In Louisiana

"AS-BUILT"



COVER SHEET - RACCOON ISLAND BREAKWATERS DEMONSTRATION PROJECT ISLES DERNIERES, TERREBONNE PARISH, LOUISIANA

U.S. DEPARTMENT OF AGRICULTURE - NATURAL RESOURCES CONSERVATION SERVICE

DESIGNED	J. MOORE	DATE	11/7/96
DRAWN	P. COLE	DATE	10/2/96
TRACED	J. MOORE	DATE	11/7/96
CHECKED	J. MOORE	DATE	11/7/96

REVISIONS

DATE	APPR.	TITLE

CAD FILE NO. COVRSHTA.DGN
DRAWING NO. LA 260
Sheet No. 1 of

SITE POSITIONS (AS-BUILT)								
SITE NO	0	1	2	3	4	5	6	7
ANGLE	N47E	N47E	N80E	N89E	S76E	S77E	S77E	S71E
EAST END	X = 213337.09 Y = 138721.84	X = 213337.09 Y = 138721.84	X = 213337.09 Y = 138721.84	X = 213337.09 Y = 138721.84	X = 213337.09 Y = 138721.84	X = 213337.09 Y = 138721.84	X = 213337.09 Y = 138721.84	X = 213337.09 Y = 138721.84
WEST END	X = 213337.09 Y = 138721.84	X = 213337.09 Y = 138721.84	X = 213337.09 Y = 138721.84	X = 213337.09 Y = 138721.84	X = 213337.09 Y = 138721.84	X = 213337.09 Y = 138721.84	X = 213337.09 Y = 138721.84	X = 213337.09 Y = 138721.84

X = 213337.09
Y = 138721.84

Handwritten note:
2nd Day
COTR
1/11/94
PP

NOTICE:
48 HOURS BEFORE DIGGING
CALL 1-800-272-3020
TO LOCATE UTILITY LINES

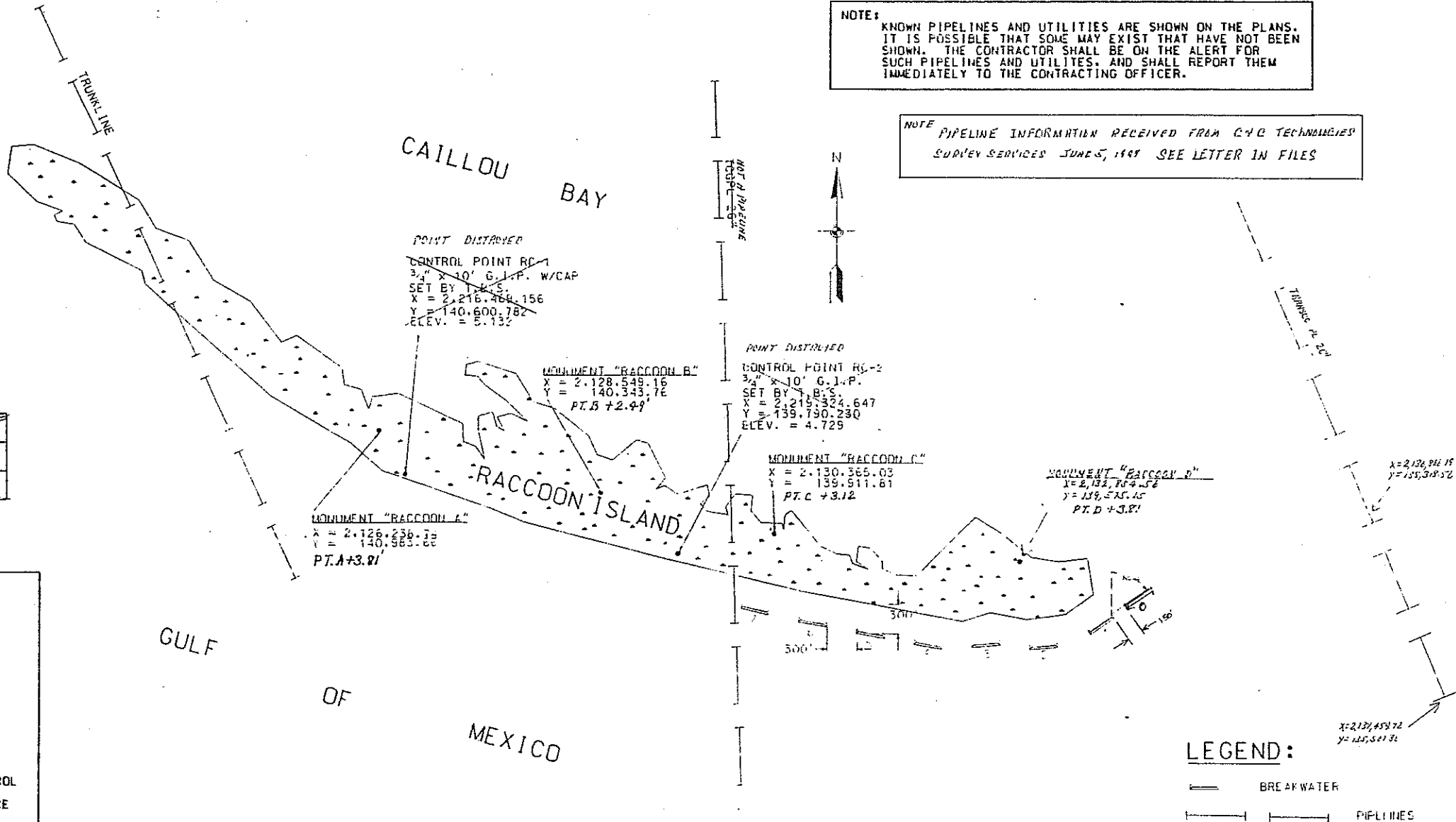
NOTE:
KNOWN PIPELINES AND UTILITIES ARE SHOWN ON THE PLANS.
IT IS POSSIBLE THAT SOME MAY EXIST THAT HAVE NOT BEEN
SHOWN. THE CONTRACTOR SHALL BE ON THE ALERT FOR
SUCH PIPELINES AND UTILITIES, AND SHALL REPORT THEM
IMMEDIATELY TO THE CONTRACTING OFFICER.

NOTE: PIPELINE INFORMATION RECEIVED FROM C+C TECHNOLOGIES
SURVEY SERVICES JUNE 5, 1997 SEE LETTER IN FILES

SITE POSITIONS							
SITE NO.	1	2	3	4	5	6	7
ANGLE	N55E	N85E	N85E	N100E	N100E	N100E	N103E

NOTE:

- ALL BREAKWATERS ARE LOCATED 300' FROM SHORELINE WITH A 300' GAP BETWEEN BREAKWATERS AS STAKED IN THE FIELD BY COTR
- WATER DEPTHS VARY FROM 3' TO 8' DEPENDING ON LOCATION AND TIDAL SURGE.
- CONTROL POINTS RC-1 AND RC-2 TAKEN FROM T. BAKER SMITH & SONS, INC. TOPOGRAPHIC SURVEY DATED FEBRUARY, 1993. HORIZONTAL AND VERTICAL CONTROL ESTABLISHED BY T.B.S. GPS CONTROL SURVEY HORIZONTAL POSITION REFERENCE NAD 83/92 DATUM, VERTICAL CONTROL REFERENCE NGVD 29.
- MONUMENTS "RACCOON A", "RACCOON B", "RACCOON C" TAKEN FROM MORRIS P. HEBERT, INC. DRAWING DATED 9/23/94 BARRIER ISLAND RESTORATION PROJECT RACCOON ISLAND RESTORATION



LEGEND:
 BREAKWATER
 PIPELINES

SCALE IN FEET
0 500 1000 1500 2000
SCALE IN MILES
0 1/2 1 1 1/2

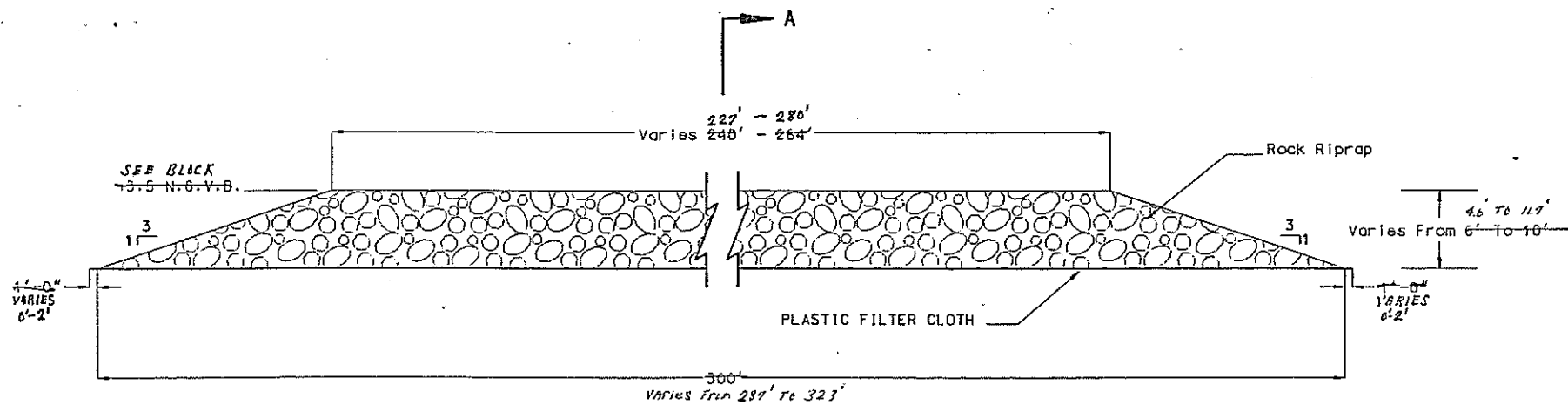


DATE	10/96	APPROVED BY	J. MOORE
DATE	10/96	APPROVED BY	P. COLE
DATE	11/96	APPROVED BY	J. MOORE
DESIGNED	J. MOORE	DESIGNED	J. MOORE
DRAWN	P. COLE	CHECKED	J. MOORE
TRACED			

PLAN MAP - RACCOON ISLAND
 BREAKWATERS DEMONSTRATION PROJECT
 ISLES DERNIERES,
 TERREBONE PARISH, LOUISIANA

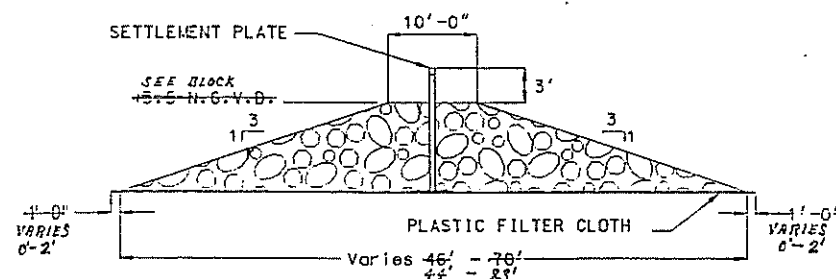
U.S. DEPARTMENT OF AGRICULTURE - NATURAL RESOURCES CONSERVATION SERVICE

CAD FILE NO. LA260-09A
 DRAWING NO. LA260
 SHEET NO. 2 OF 3



SETTLEMENT PLATE INFORMATION																								
SITE NO	0		1		2		3		4		5		6		7									
	EAST	WEST	EAST	WEST	EAST	WEST	EAST	WEST	EAST	WEST	EAST	WEST	EAST	WEST	EAST	WEST								
OVERALL LENGTH (FT)	14.1	13.9	11.4	10.9	11.1	11.1	9.4	9.6	9.5	9.6	9.7	9.8	9.0	9.3	9.2	9.4	9.5	9.2	10.1	11.2	11.5	11.8	11.4	
ELEVATION (FT)	6.66	6.22	7.54	6.01	6.96	6.77	6.31	6.29	6.35	7.00	7.24	7.76	7.02	7.15	7.57	8.13	7.92	7.22	8.12	7.26	6.92	7.87	7.52	7.17

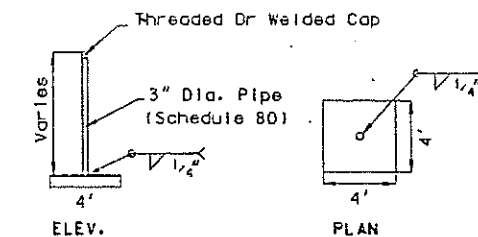
LONGITUDINAL SECTION



SECTION A - A

TYPICAL BREAKWATER SECTION

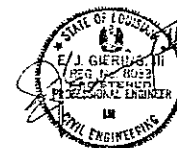
SITE NO	0		1		2		3		4		5		6		7	
	EAST	WEST	EAST	WEST	EAST	WEST	EAST	WEST	EAST	WEST	EAST	WEST	EAST	WEST	EAST	WEST
BASE LENGTH (FT)	289	314	323	289	311	313	291	305								
BASE WIDTH (FT)	93	81	63	44	49	51	56	64								
BASE ELEV. (FT)	7.9	6.3	4.7	6.7	4.2	5.3	5.9	6.5								
TOP LENGTH (FT)	227	255	280	275	250	260	255	255								
CULF BOTTOM ELEV.	EAST-7.5 WEST-5.9	EAST-4.9 WEST-4.4	EAST-3.4 WEST-1.7	EAST-1.9 WEST-1.0	EAST-0.6 WEST-1.6	EAST-1.9 WEST-2.3	EAST-2.2 WEST-3.1	EAST-3.1 WEST-4.1								



SETTLEMENT PLATE DETAILS
(Not To Scale)

RIPRAP GRADATION		
Material	% Lighter By Weight	Weight of Each Rock (Lbs)
Riprap	100	5000 - 2000
	50	2200 - 1000
	15 Maximum	1100 - 300

"AS-BUILT"



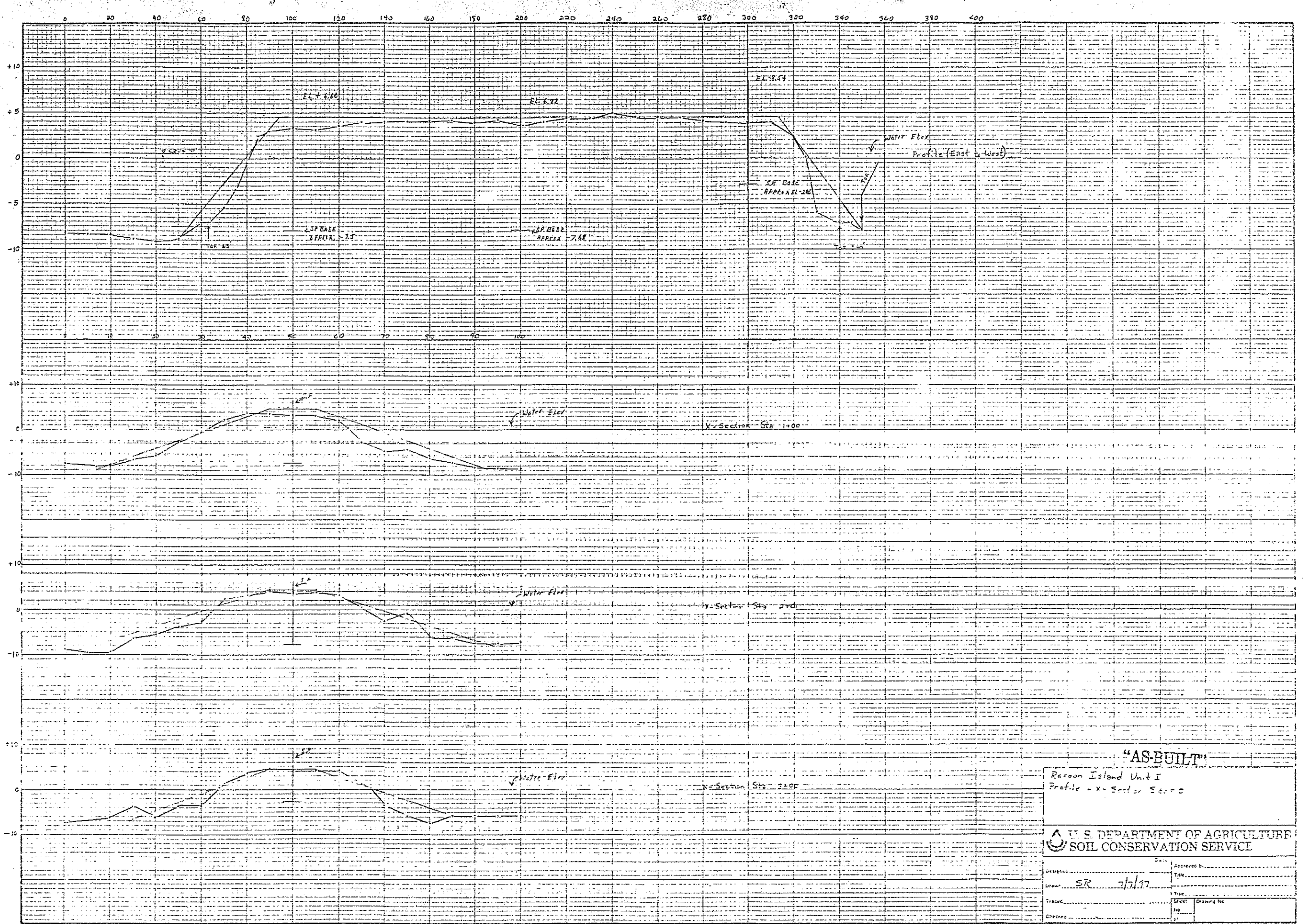
(NOT TO SCALE)

Date: 10/96
 Approved by: J. Moore
 Title: State Conservation Engineer
 State: Louisiana
 Date: 10/96
 Designed by: J. Moore
 Drawn by: P. Cole
 Traced by: J. Moore
 Checked by: J. Moore
 Title: State Conservation Engineer
 Title: State Conservation Engineer
 Title: State Conservation Engineer
 Title: State Conservation Engineer

BREAKWATER DETAIL - RACCOON ISLAND
 BREAKWATERS DEMONSTRATION PROJECT
 ISLES DERNIERES, TERREBONNE
 PARISH, LOUISIANA
 U.S. DEPARTMENT OF AGRICULTURE - NATURAL RESOURCES CONSERVATION SERVICE

REVISIONS
 DATE: _____ TITLE: _____
 DATE: _____ TITLE: _____
 DATE: _____ TITLE: _____
 DATE: _____ TITLE: _____

CAD FILE NO. LA 260-02
 DRAWING NO. LA 260
 Sheet No. 3 of 3

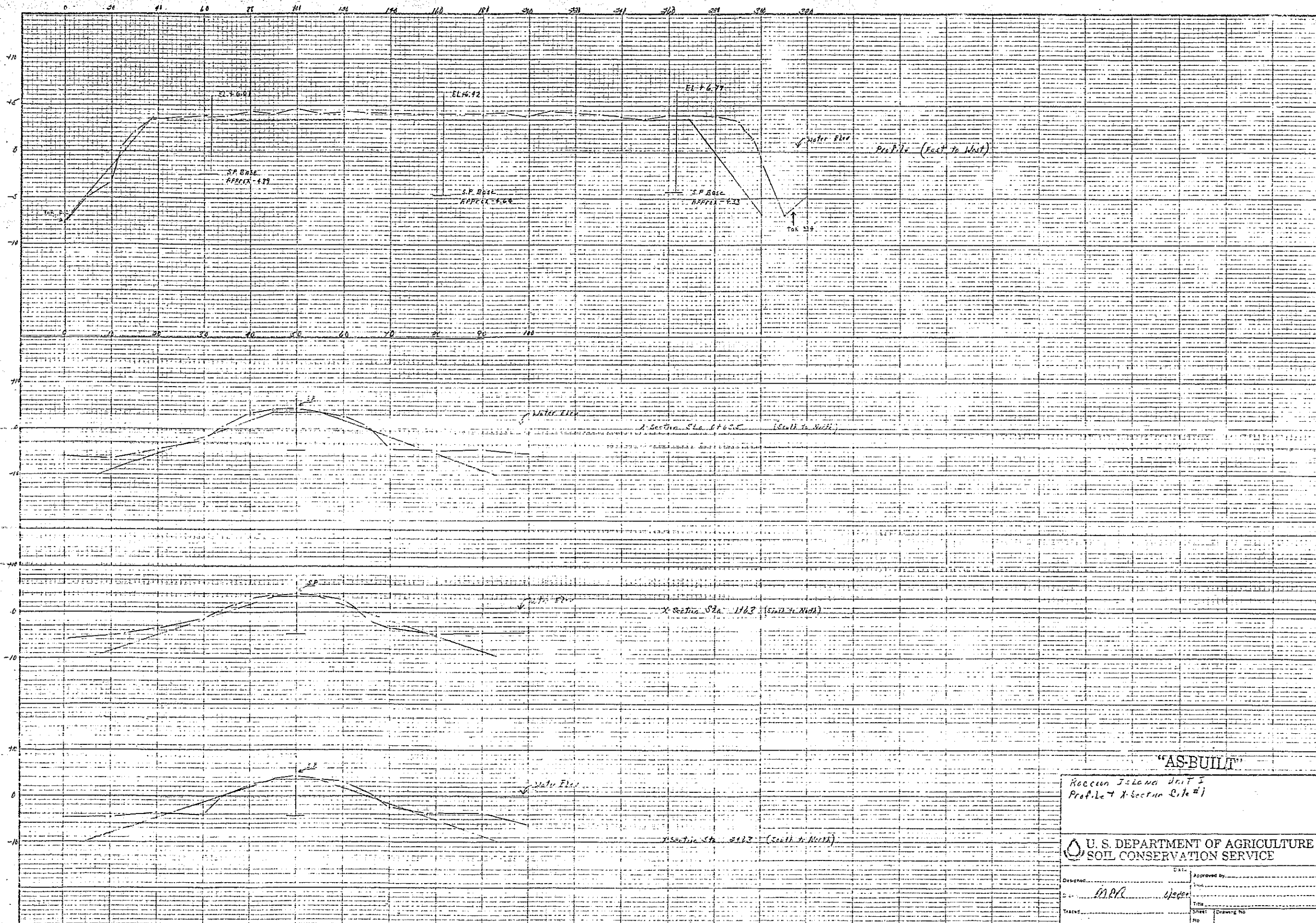


"AS-BUILT"

Raccoon Island Unit I
 Profile - X-Section Sta 0

U. S. DEPARTMENT OF AGRICULTURE
 SOIL CONSERVATION SERVICE

DESIGNED	DATE	APPROVED BY	TITLE
DRAWN	SR 7/7/77		
CHECKED			SHEET NO. DRAWING NO.

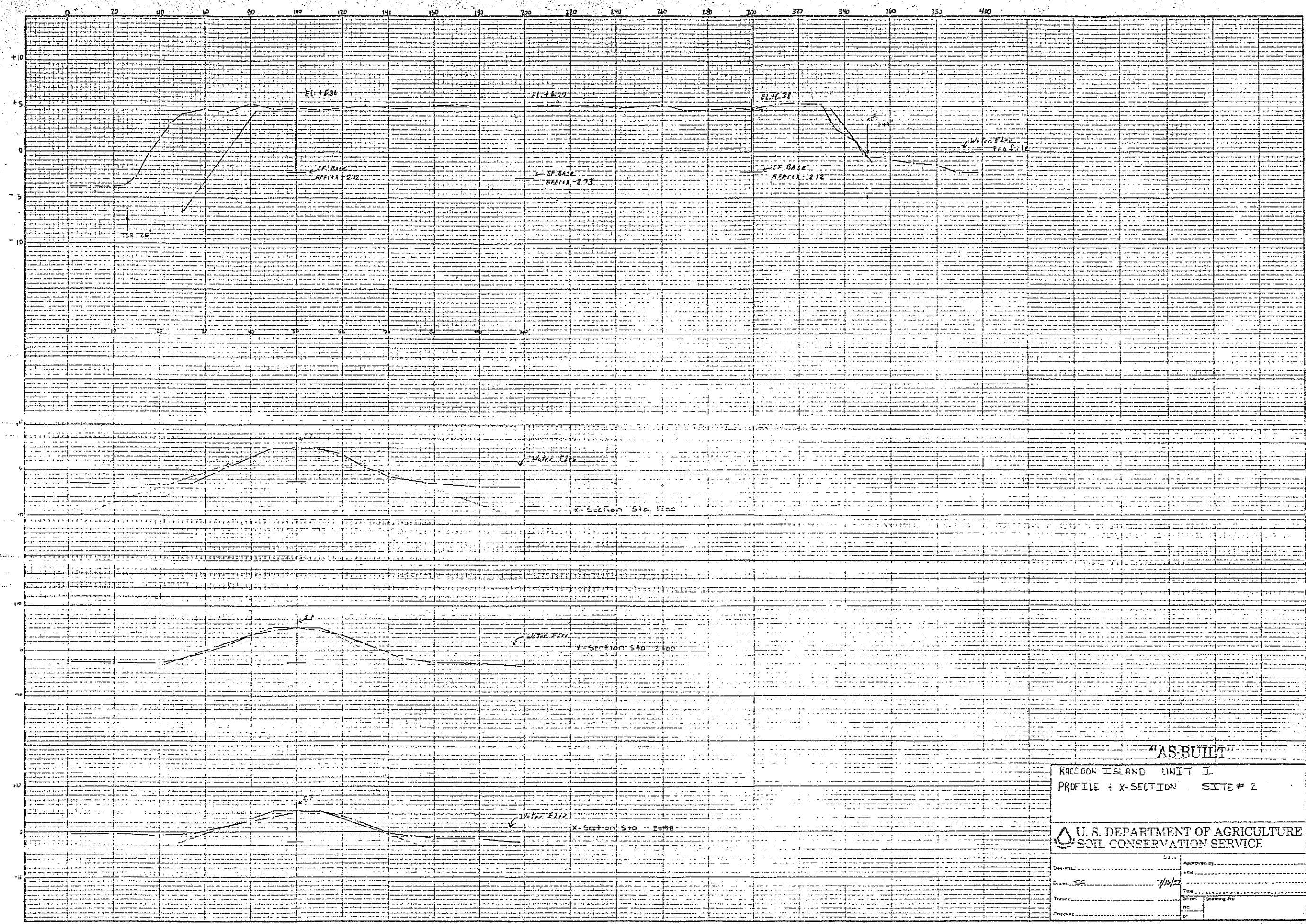


"AS-BUILT"

Raccoon Island Unit 5
 Profile + X-section Site #1

U. S. DEPARTMENT OF AGRICULTURE
 SOIL CONSERVATION SERVICE

Designed by <i>M.P.R.</i>	Date <i>1/25/68</i>	Approved by <i>[Signature]</i>
Traced	Sheet 1 of 1	Drawing No.
Checked	File	

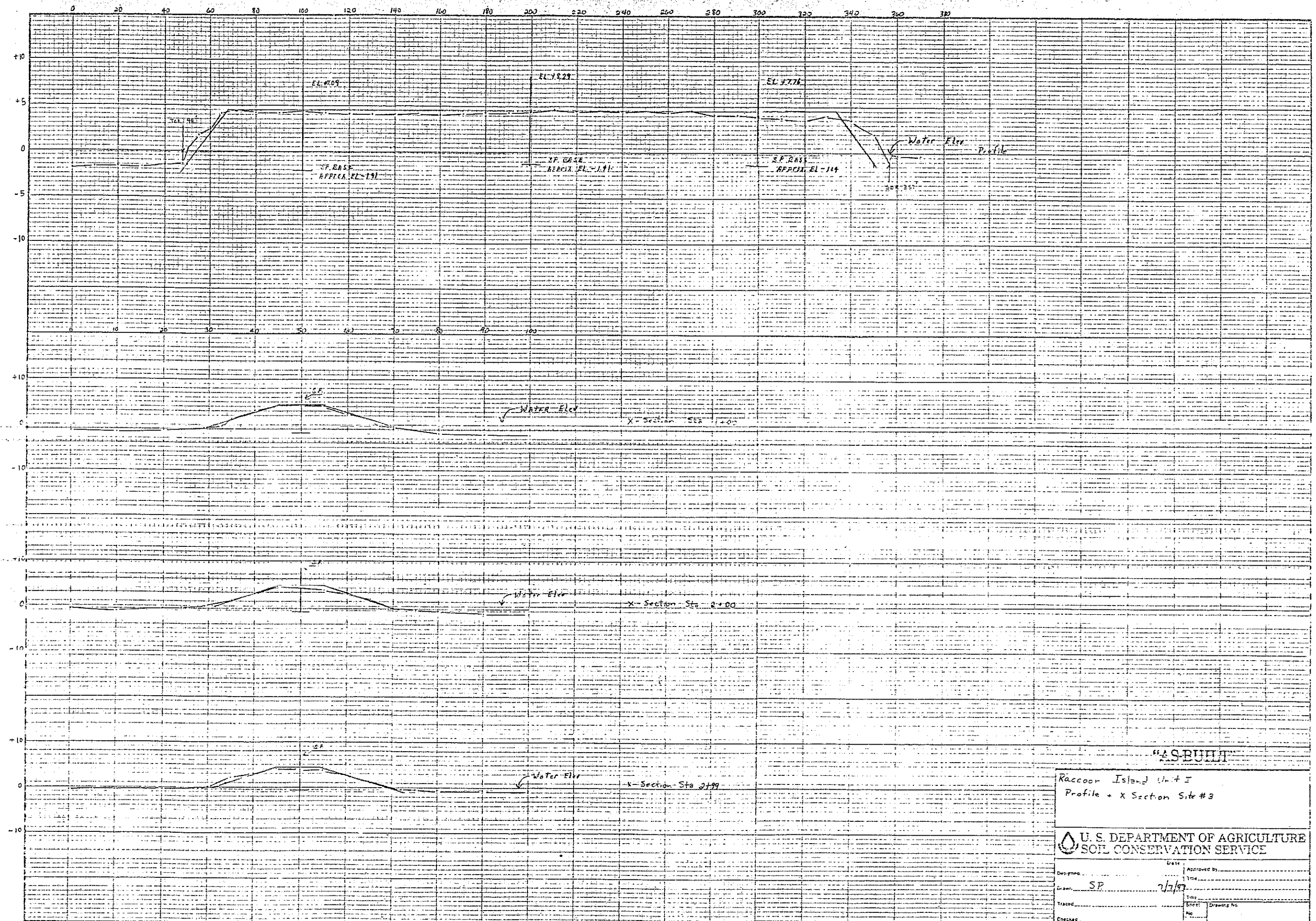


"AS-BUILT"

RACCOON ISLAND UNIT I
 PROFILE & X-SECTION SITE # 2

U. S. DEPARTMENT OF AGRICULTURE
 SOIL CONSERVATION SERVICE

Drawn by	Checked by	Approved by
7/1/57		
Trace	Sheet	Drawing No.
	No.	
Checked		

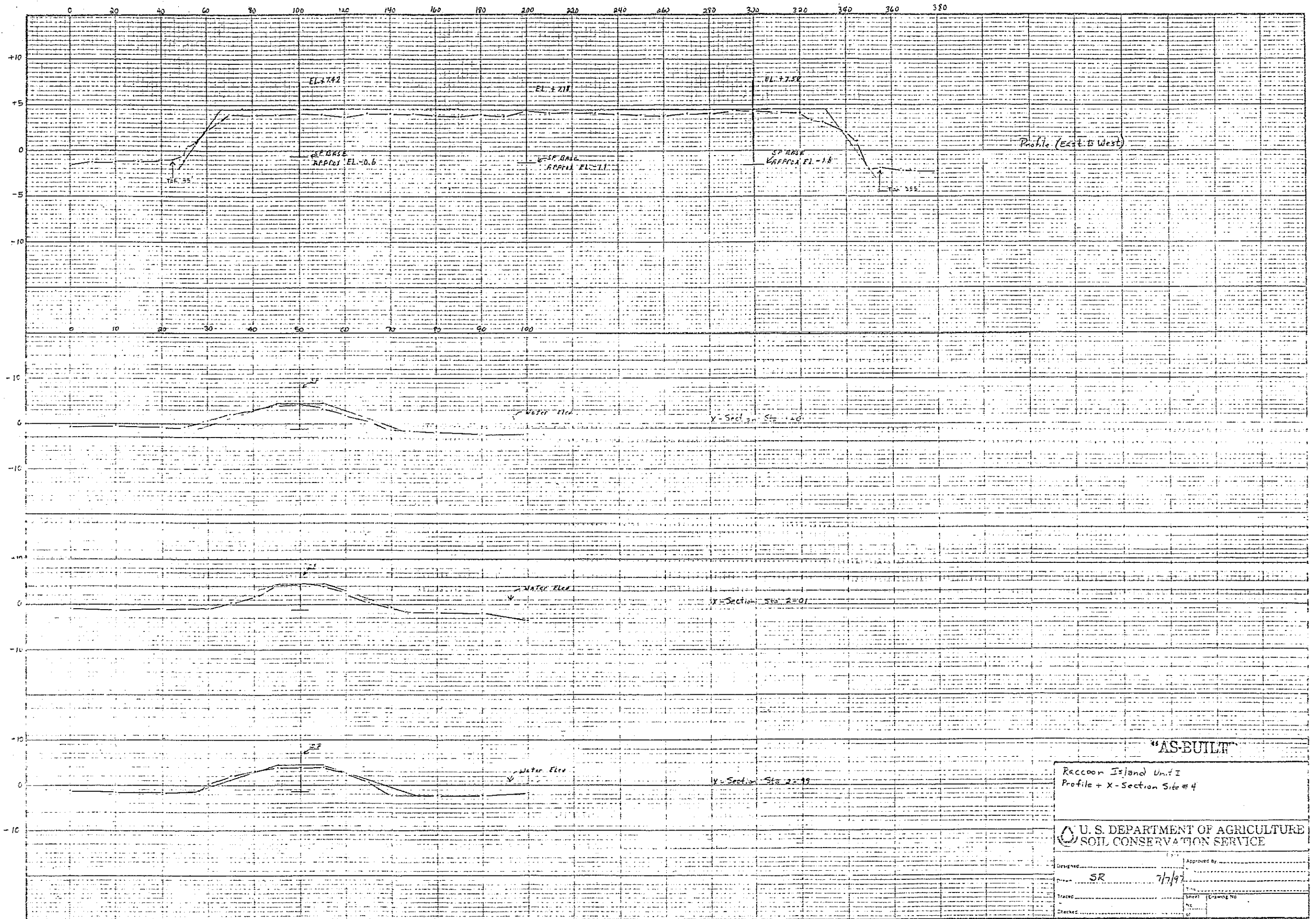


"AS BUILT"

Raccoon Island Unit I
Profile + X Section Site #3

U. S. DEPARTMENT OF AGRICULTURE
SOIL CONSERVATION SERVICE

Designed	Drawn	Checked	Approved by	Date
	SP			7/7/77
Traced	Sheet No.	Drawing No.		
Checked				

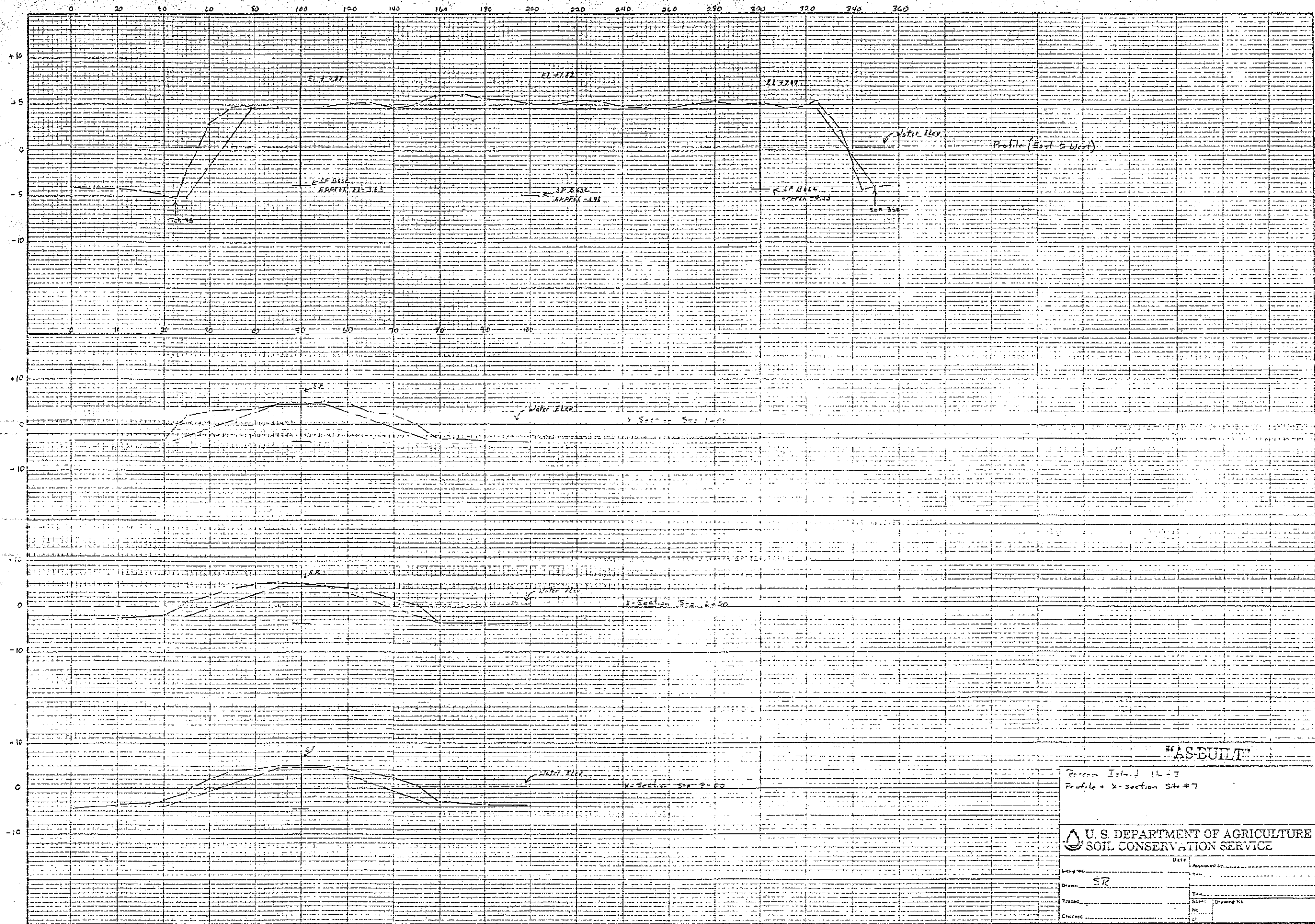


Raccoon Island Unit E
Profile + X-Section Site # 4

U. S. DEPARTMENT OF AGRICULTURE
SOIL CONSERVATION SERVICE

Designed by SR
Approved by 7/7/97

Trace Sheet
Drawing No.



"AS-BUILT"

Ransom Island (L-1)
Profile + X-section Sta #7

U. S. DEPARTMENT OF AGRICULTURE
SOIL CONSERVATION SERVICE

Date	Approved By
Task	Task
Drawn SR	Eng.
Traced	Supv.
Checked	Dr. No.
	Drawing No.