

***GOOSE POINT / POINT PLATTE***

***MARSH CREATION PROJECT***

***PROJECT COMPLETION REPORT***

CWPPRA/State Project No: PO-33

June 10, 2009

***BCG*** **Engineering & Consulting, Inc.**  
*Excellence in Engineering*

# ***PROJECT COMPLETION REPORT***

**Project Name:** Goose Point/Point Platte Marsh Creation Project

**CWPPRA/State Project No:** PO-33

**Report Date:** June 10, 2009

**By:** BCG Engineering & Consulting, Inc.

## ***1. Project Mangers/Contracting Officer:***

DNR Project Manager.....Andrew Beal .....(225)342-1952  
DNR Field Engineer Supervisor .....Tom Bernard .....(504)280-4071  
DNR Construction Project Manager.....Tom Bernard .....(504)280-4071  
DNR Monitoring Manager.....Melissa Hymel .....(504)280-4074  
Federal Sponsor, U.S.F.W.S. ....Kevin Roy .....(337)291-3120  
Federal Sponsor, U.S.F.W.S. ....Daniel Breaux .....(985)882-2000  
(Field Office – Lacombe)

## ***2. Location and Description of Project as Approved for Construction:***

The Goose Point/Pointe Platte Marsh Creation Project (PO-33) is located in St. Tammany Parish on the north shore of Lake Ponchartrain, approximately five miles south of Lacombe, Louisiana. The fill and borrow sites are located near the confluence of Lake Pontchartrain and Lacombe Bayou. The approximate coordinates of the project areas are as follows: Goose Point – 30° 15' 58.43" N latitude and 89° 58' 40.44" W longitude, Point Platte – 30° 15' 11.63" N latitude and 89° 55' 17.25" W longitude.

The work site, including the five marsh fill areas and two dredge borrow sites, is only accessible by boat and air boat. A public launch is located on Lake Road (an extension of LA 434) along Bayou Lacombe, approximately 0.5 miles from Lake Ponchartrain and two miles from the marsh areas.

This project created approximately 566 acres of new marshland areas by dredging material from Lake Ponchartrain and disposing into designated on-shore fill areas along the Lake Ponchartrain shore at Goose Point and east of Point Platte. The Goose Point borrow site was the source of materials being placed into two fill areas, designated as Fill Areas "A" and "B". The Point Platte Borrow Site was the source of materials being placed into three fill areas designed as Fill Areas "C", "D", and "E". See attached as-built drawings for Fill Areas "A" thru "E" in Appendix A. A total of 49,557 linear feet of earthen perimeter containment dikes, were constructed with in-situ material from inside the perimeters of the five marsh creation areas. The subject dikes were constructed by the use of long reach marsh buggy backhoes utilizing from one to three lifts.

### 3. **Final, As-built Features, Boundaries, and Resulting Acreage:**

The principle features include:

Fill Area “A” – approximately 479,903 cubic yards of dredge material was placed in Fill Area “A” creating approximately 64 acres of new marsh and some 23 acres of marsh nourishment.

Fill Area “B” – approximately 949,700 cubic yards of dredge material was placed in Fill Area “B” creating approximately 125 acres of new marsh and some 77 acres of marsh nourishment.

Fill Area “C” – approximately 863,176 cubic yards of dredge material was placed in Fill Area “C” creating approximately 120 acres of new marsh and some 49 acres of marsh nourishment.

Fill Area “D” – approximately 149,370 cubic yards of dredge material was placed in Fill Area “D” creating approximately 13 acres of new marsh and approximately 6 acres of marsh nourishment.

Fill Area “E” – approximately 658,770 cubic yards of dredge material was placed in Fill Area “E” creating approximately 95 acres of new marsh, not including the marsh nourishment area.

### 4. **Key Project Cost Elements:**

#### **CWPPRA PROJECT**

<u>Completion</u>	<u>Cost Estimates</u>	<u>Cost Incurred as of Construction</u>
Construction	\$12,550,729.00	\$12,995,598.75
E&D	\$1,241,993.00	\$1,241,993.00
Land Rights	\$10,428.00	\$10,428.00
Monitoring	0.00	0.00
O&M	\$736,767.00	\$736,767.00
<b>TOTAL</b>	<b>\$14,539,917.00</b>	<b>\$14,984,786.75</b>

### 5. **Items of Construction:**

Item	Work	Original Bid Quantity	Unit	Original Unit Price (\$)	Original Amount (\$)	Final Quantity	Final Bid Unit Price (\$)	Final Amount	Percent Over
1	Mob and Demob	1	L.S.	1,650,000.00	1,650,000.00	1	1,650,000.00	1,650,000.00	0
2	Hyd. Dredging	3,008,700	C.Y.	3.35	10,079,145.00	3,092,905	3.35	10,361,231.75	+0.028
3	Containment Dikes	49,557	L.F.	12.00	594,684.00	49,732	12.00	596,784.00	+0.003
4	Grade Stakes	269	EA..	100.00	26,900.00	269	100.00	26,900.00	0
5	Construction Surveys	1	L.S.	200,000.00	200,000.00	1	200,000.00	200,000.00	0
6	Vinyl Sheet Pile	0	L.F.	0.00	0.00	620	237.40	147,188.00	0
7	Floatation Channels	0	L.S.	0.00	0.00	1	L.S.	13,495.00	0
	<b>TOTAL</b>				<b>12,550,729.00</b>			<b>12,995,598.75</b>	<b>0.035</b>

6. **Construction and Construction Oversight:**

<u>Item</u>	<u>Construction Unit</u>
Prime Construction Contractor	Weeks Marine, Inc.
Surveyor	Michael Baker Surveyor, Inc.
Subcontractor	Wilco, Inc.
Subcontractor	Shoreline Construction, LLC

Original Construction Contract:	\$12,550,729.00
Change Orders:	Change Order No. 1 - \$431,374.00
	Change Order No. 2 - \$13,495.00
Over/Under Runs:	
Item 2: +84,205 cubic yards	
Item 3: +175 linear feet	
Damages: NONE	
Total Construction Contract Cost:	\$12,995,597.75
Construction Oversight: BCG Engineering & Consulting, Inc.	(E) \$197,687.00

7. **Major Equipment Used:**

Dredge *Borinquen*, dredge *Venture*, dredge *Tom James*; booster pump barge, quarter boat, spud barge with Manitowac 4,600, spud barge with ring crane, four equipment barges, seven track-hoes (mounted on marsh buggies); three push boats, two crew boats, two air boats; one dump site building, two flexi-float barges, and push boat with Hitachi EX100 and EX60 excavators, vibratory plate hammer, all terrain forklift, and 180-ton truck crane.

8. **Discuss Construction Sequences and Activities, Problems Encountered Solutions to Problems, Etc.:**

- The quarter boat, B-405, was the first equipment to arrive on site, on April 1, 2008. The survey party followed and began to layout and mark Fill Areas “A”, “B”, “C”, “D”, and “E”. Following layout work the subcontractor, Wilco, Inc., with five track-hoe mounted marsh buggies began construction of containment dike system in Fill Area “C”. The remaining dike systems were constructed in the following order, Fill Areas “D”, “E”, “B”, and “A”.
- The 24-inch dredge *Borinquen* arrived on site May 18, 2008 and began dredging on May 26, 2008 from the Point Platte borrow site discharging into Fill Area “E”. On June 14, 2008 the discharge line was temporarily removed from Fill Area “E” to allow material to settle and decant excess water. The discharge line was moved into Fill Area “D” and dredging continued until Fill Area “D” was complete. The discharge line in Area “D” was then moved to Fill Area “E”. Dredging operations were resumed in Area “E”. Area “E” filling was completed on July 14, 2008.
- The booster barge arrived to assist the *Borinquen* due to heavier than anticipated materials, shells, and hard pleistocene clay being encountered. Progress was slow due to many mechanical



and line breakdowns with the *Borinquen* equipment. The booster pump barge was placed in line with the *Borinquen* and dredging resumed into Fill Area “C”.

- The dredge *Venture* replaced the *Borinquen* and began filling Area “C” on August 15, 2008. The dredge *Borinquen* and booster barge was moved from the Point Platte borrow site to the Goose Point borrow site and began dredging into Fill Area “B” on August 19, 2008. The dredge *Venture* began dredging material from the Point Platte borrow site into Fill Area “C”. Slow pumping progress continued due to frequent stoppages of both dredges.
- All equipment was shut down and secured from August 22 to 25, 2008 for Tropical Storm Fay. All equipment again shutdown from August 30, 2008 to September 6, 2008 for Hurricane Gustav. The dredge *Venture* returned to Goose Point borrow site and began placing material into Area “A” on September 8, 2008. The dredge *Borinquen* remained idle. On September 11, 2008 the dredge *Venture* stopped pumping due to the high water levels over the marsh due to Hurricane Ike. The dredge resumed pumping on September 15, 2008, but only pumped 14 hours. The dredge was plagued with breakdowns between September 16 and 28, 2008 and only operated for a total of 40 hours in this 13-day period.
- The dredge *Tom James* arrived on site September 28, 2008 and began dredging material from Goose Point borrow site discharging into Fill Area “A”. The dredge *Borinquen* was parked at site. The dredge *Venture* relocated to Point Platte borrow area and began placing material into Area “C”. Placement progress improved greatly with the *Tom James*.
- By letter from James F. Boggs, dated September 19, 2008, Department of Interior, the dredging window as increased by 31 days from 30 days, September 30 to October 31, 2008.
- Contractor was ordered by the DNR to construct 175 linear feet of additional dikes to prevent dredge effluent from entering Lake Pontchartrain.
- The placement of dredged fill in Area “C” by the *Venture* and Area “A” by the *Tom James* was accepted as complete by BCG (Ike Mayer) with consultation from Mr. T. L. Bernard of DNR on October 4, 2008. The *Tom James* then commenced placing material into Area “B” on October 5, 2008. The placement into Area “B” was completed and accepted on October 25, 2008 by BCG (Ike Mayer) after consulting with Mr. Bernard of DNR. This completed all dredging operations to place material into the five marsh receiving areas.
- Final post-dredge surveys were performed by T. Baker Smith, the Point Platte borrow site surveys were performed on October 9, 2008, and the Goose Point borrow site surveys were performed on October 29, 2008.
- Due to the erosion of the shoreline dikes of marsh areas “D” and “E”, the Contractor was directed by DNR to reinforce the earthen dikes in four locations with 620 linear feet of vinyl sheet piling. Subcontractor, Shoreline Construction, began driving vinyl sheet pile on January 10, 2009 all sheet pile work was completed on January 27, 2009.
- All construction work was completed on January 27, 2009. The final inspection was held on February 12, 2009 and the project was accepted as substantially completed.

9. **Construction Change Orders and Field Changes:**

- Field change – extension of dredging window from September 30, 2008 to October 31, 2008 due to time lost from equipment shut downs, and three weather events, Tropical Storm Fay, Hurricanes Gustav and Ike.
- Change Order 01 – Added 84,205 cubic yards of dredged material; modifications to dike configurations, necessitating an additional 175 linear feet of dike and added 620 linear feet of vinyl sheet pile closures in Fill Areas “D” and “E”.
- Change Order 02 – Time extension of eight days to contract and added costs for subcontractor to complete floatation channels for sheet pile closures. Contactor could not perform work due to extremely low tides; time granted while waiting for tides to rise. Also funding for additional cost incurred by subcontractor construction floating access to each dike location.
- Bi-weekly progress meetings were held at the inspector’s field office at which time filed site inspections were made with all sponsor representative present, minor changes were discussed and resolved. All major concerns and/or request for changes to the contract specifications were addressed by written correspondence to the BCG Engineering and Consulting, Inc. who submitted their recommendations to the CWPPRA representative coordinator for approvals.

10. **Pipeline and Other Utility Crossing:**

There was no dredging work occurring over these pipelines.

**Structure**

**Representative to Contact**

Transcontinental Gas Pipeline, eight inches .....Floyd Dominique (225)687-3900, ext. 261  
Southern Natural Gas Company, eight inches .....Kurt Cheramie (504)868-6785

11. **Safety and Accidents:**

No loss time accidents were reported.

12. **Significant Construction Dates:** Purchase Order No. 3305474.

Bid Opening .....February 21, 2008  
Construction Contract Award .....March 4, 2008  
Pre-construction Conference .....March 11, 2008  
Notice to Proceed .....April 22, 2008  
Mobilization Began .....April 1, 2008  
Dredge Borinquen Mobilized .....May 18, 2008  
Construction Started .....April 1, 2008  
Dredge Venture Mobilized .....August 15, 2008

Dredge Tom James Mobilized .....	September 28, 2008
Extended Dredging Window – 30 days .....	September 19, 2008
Dredge Work Completed .....	October 25, 2008
Added Sheet Pile, Dike Work Started.....	December 28, 2008
Construction Completed .....	January 27, 2009
Final Acceptance.....	February 12, 2009
Demobilization Completed .....	January 30, 2009

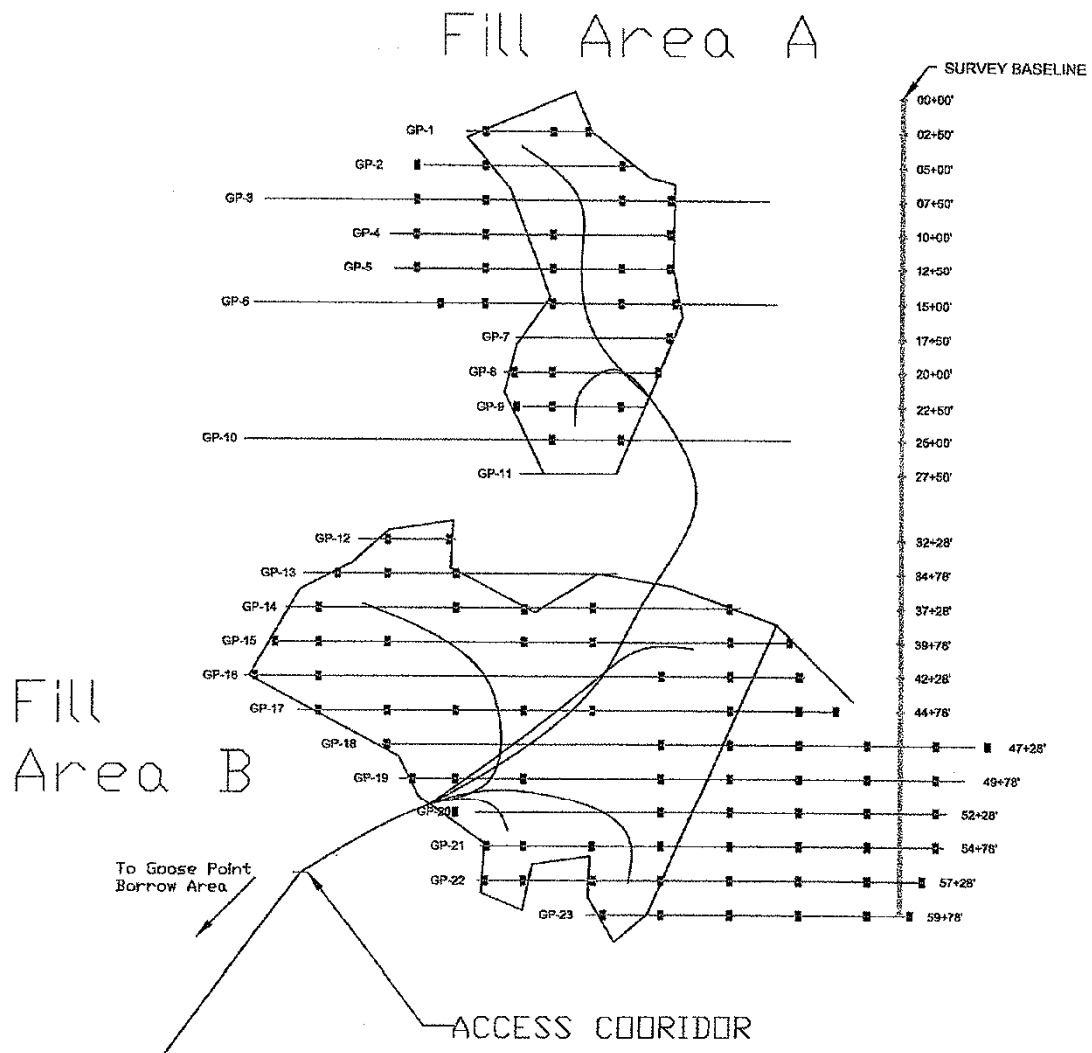
13. **Appendices:**

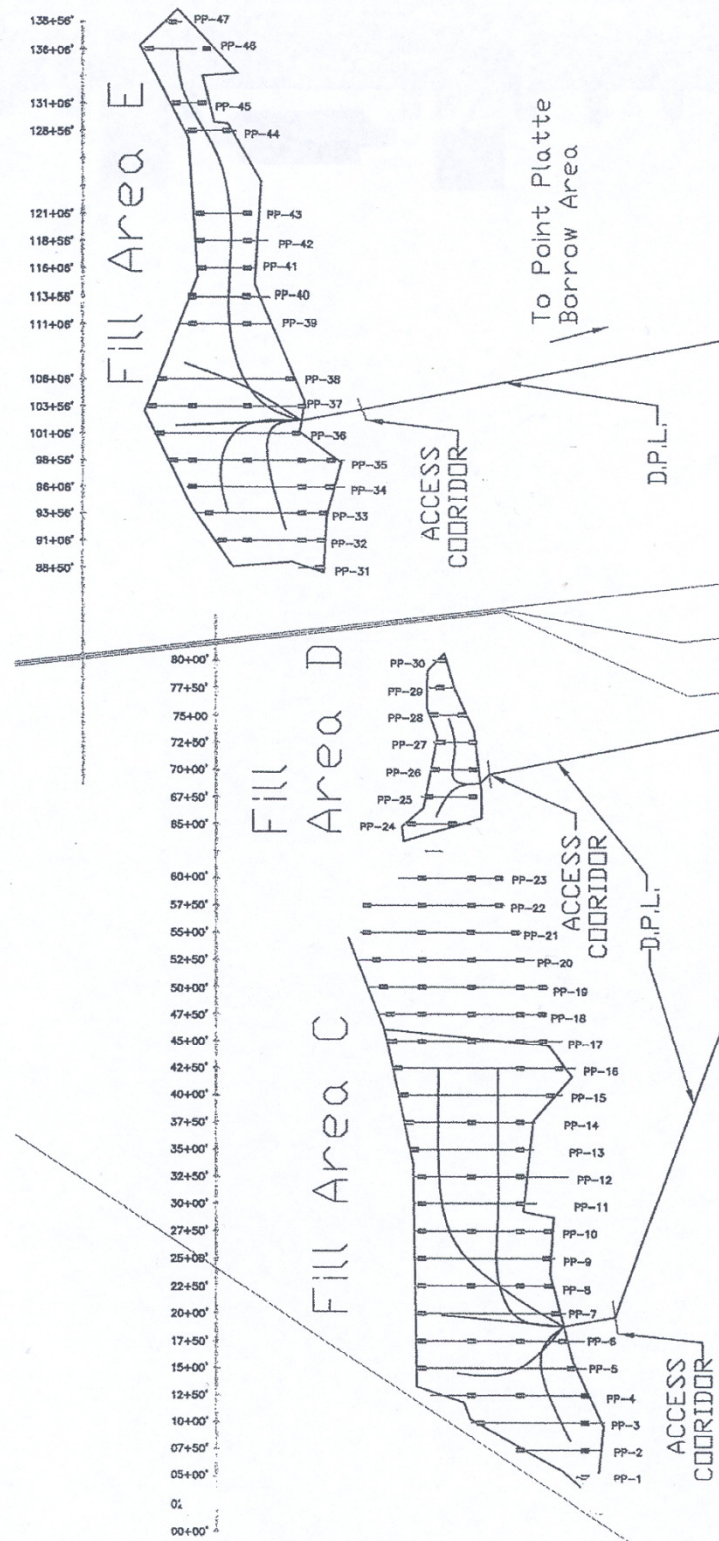
- A – Final Elevations in Marsh Areas
- B – Selected Construction Photographs
- C – Final Surveys
- D – USF & W Letter Extending Dredging Period
- E – Change Orders

Signed: \_\_\_\_\_

Emmett J. (Ike) Mayer, Jr., P.E.  
BCG Engineering & Consulting, Inc.

## APPENDIX A





# Weeks Marine Inc.

Goose Point / Point Platte Marsh Creation Project  
 Fill Area A Final Elevations  $\overline{= 2.593}$   
 11/6/2008

WMI Stake #	Elevation
GP101	2.15
GP102	1.80
GP103	2.57
GP201	3.15
GP202	2.19
GP203	3.00
GP204	2.34
GP301	2.75
GP302	2.48
GP303	3.10
GP304	2.89
GP305	2.95
GP401	2.79
GP402	2.30
GP403	2.91
GP404	2.85
GP405	2.80
GP501	2.40
GP502	2.27
GP503	2.71
GP504	2.81
GP505	2.35
GP601	1.89
GP602	2.33
GP603	2.88
GP604	2.76
GP605	2.39
GP701	1.90
GP702	2.58
GP703	3.12
GP801	2.15
GP802	2.65
GP803	2.73
GP804	2.88
GP901	2.91
GP902	2.70
GP903	1.81
GP1001	3.06
GP1002	2.83

TOTAL  $101.13 \div 39 = \text{Avg. } 2.593$



# Weeks Marine Inc.

## Goose Point / Point Platte Marsh Creation Project

Fill Area B Final Elevation Readings =  $+3.210$

### WMI Stake #

### Elevation

GP1201	2.58 ✓ .01
GP1202	2.14
GP1301	2.75
GP1302	3.45
GP1303	1.75
GP1401	2.84
GP1402	3.75 ✓ .02
GP1403	3.95
GP1404	4.12
GP1405	2.85
GP1406	3.05
GP1407	3.25
GP1501	3.04
GP1502	2.95
GP1503	1.75
GP1504	1.09
GP1505	3.85
GP1506	3.67
GP1507	3.28
GP1508	3.25
GP1509	2.97
GP1601	3.37
GP1602	3.15
GP1603	2.71
GP1604	3.76
GP1605	3.81
GP1606	3.75
GP1607	3.98
GP1608	5.35
GP1609	3.89
GP1701	2.75
GP1702	3.25
GP1703	3.55
GP1704	4.25
GP1705	3.87
GP1706	3.89 ✓ .05
GP1707	4.15 ✓ .02
GP1708	3.71
GP1709	2.96
GP1801	3.68

40

TOTAL ELEV. of 88 Points  
 $= +282.53 + 88 =$   
 AVG.  $+3.210$



GP1802	2.76
GP1803	2.69
GP1804	2.74
GP1805	2.81
GP1806	2.73
GP1807	2.82
GP1808	2.45
GP1809	3.15
GP1810	3.67
GP1901	3.95
GP1902	3.12
GP1903	3.26
GP1904	3.75
GP1905	3.98
GP1906	3.95
GP1907	3.87
GP1908	3.85
GP1909	3.67
GP2001	3.37
GP2002	3.48
GP2003	3.73
GP2004	3.71
GP2005	3.91
GP2006	3.84
GP2007	3.56
GP2008	3.41
GP2101	2.95
GP2102	3.02
GP2103	3.08
GP2104	2.97
GP2105	2.45
GP2106	2.48
GP2107	2.55
GP2108	2.45
GP2201	2.99
GP2202	3.15
GP2203	2.86
GP2204	2.95
GP2205	3.12
GP2206	3.35
GP2207	3.35
GP2208	3.25
GP2301	2.52
GP2302	2.21
GP2303	2.53
GP2304	2.69
GP2305	2.37

77.92

147.52

GP2306

2.85

2.85

282.53

88

±3.210

182.8 ÷ 85 = 2.15

AREA C = 2.202 Ft.

PP					
101	3.4	1001	3	1801	2.7
201	3.5	1002	3.3	1802	2.5
202	3.4	1003	3.5	1803	2.6
301	1.8	1004	3.2	1804	2.7
302	3.2	1101	3.1	1805	2.4
303	3.9	1102	3.4	1901	2.1
401	2.9	1103	3.2	1902	2.5
402	2.2	1201	2.8	1903	2.2
403	3	1202	2.9	1904	2.4
501	3.1	1203	3.3	1905	2.1
502	3.1	1301	3	2001	2.2
503	3.3	1302	3.6	2002	2.2
504	3.4	1303	3.1	2003	2.3
601	3.2	1401	2.9	2004	2.4
602	3.1	1402	3.4	2101	1.9
603	3.2	1403	2.9	2102	2.2
604	3.4	1501	2.7	2103	2.4
701	3.2	1502	3.1	2104	2.2
702	2.9	1503	2.7	2201	2.1
703	3.1	1504	2.9	2202	2.2
704	3.2	1601	2.6	2203	2
801	2.9	1602	2.7	2204	2.3
802	3.3	1603	2.7	2301	2.6
803	3.3	1604	2.4	2302	2.4
804	2.8	1701	2.4	2303	2.1
901	2.7	1702	2.6		
902	3.3	1703	2.2		
903	3.4	1704	2.6		
904	3.3	1705	2.4		

91

90.5

(29)

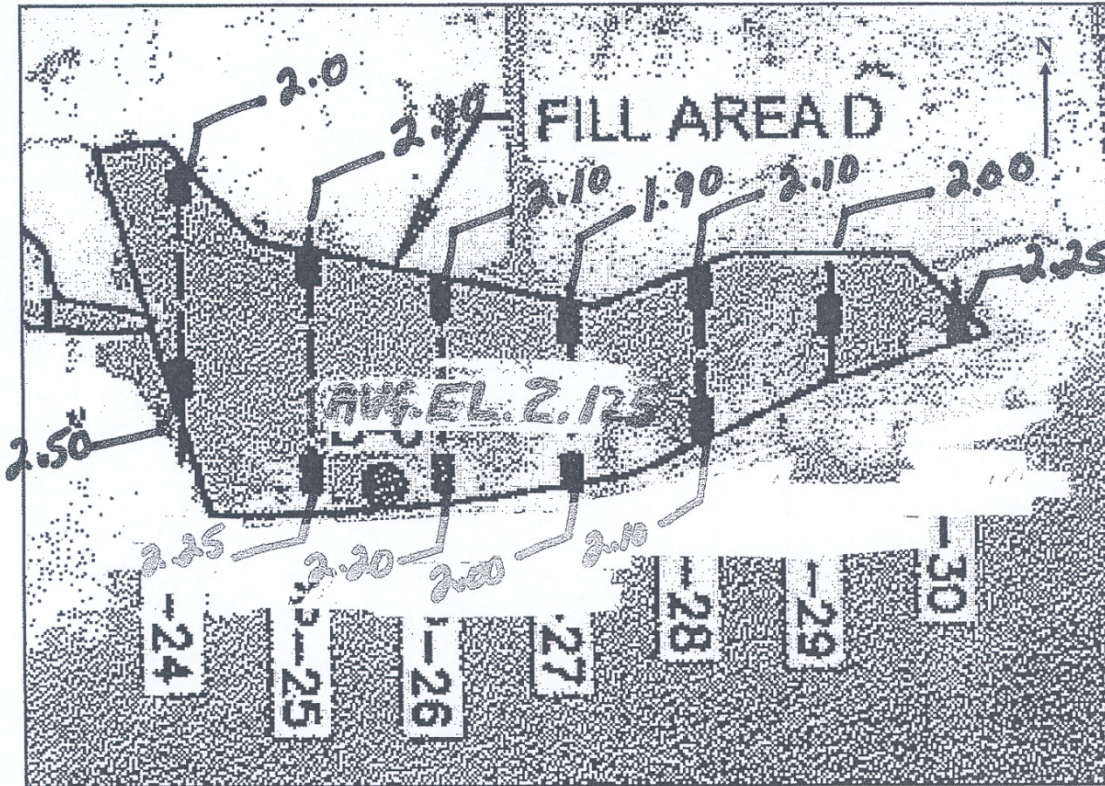
84.6

57.7 (25)

(25)



DATE: 7-25-08



MARSH FILL AREA D - WORK PROGRESS

ITEM	DESCRIPTION	LOCATION 1	LOCATION 2	LOCATION 3	LOCATION 4	TOTAL COMPLETED
A.1	BEGIN TIME PUMPING					
A.2	END TIME PUMPING					
A.3	PIPE END BETWEEN TRANSECTS	P & P				
A.4	PIPE END NEAREST STAKE FROM W OR S					
A.5	ESTIMATED PERCENTAGE OF AREA COMPLETED					
A.6	ESTIMATED CUBIC YARDAGE PLACED					
A.7	TOTAL AREA (%)					
A.8	TOTAL YARDAGE PLACED					

Survey results of ELEVATION FOR Fill Area "D"  
is AVG. EL. 2.125 for 28 DAY Settlement Survey



AREA E = 42.121 FT.

$$99.7 \div 47 = 2.121$$

POINT PLATTE			
3101	2.2	3804	2.2
3201	2.3	3901	2.2
3202	2.1	3902	2.3
3203	2.2	4001	2.5
3204	2.3	4002	2.2
3301	2.1	4101	2.1
3302	2.3	4102	2.2
3303	2.3	4201	2.1
3304	2.2	4202	2.2
3401	2.5	4301	2.1
3402	2.3	4302	2.2
3403	2.2	4401	1.8
3404	2.3	4402	1.7
3501	2.4	4501	1.5
3502	2.3	4502	1.6
3503	2.1	4601	1.8
3504	2.2	4602	1.6
3505	2.3	4701	1.2
3601	2.5		
3602	2.1		
3603	2.2		
3604	2.4		
3701	2.2		
3702	2.3		
3703	2.1		
3704	2.2		
3801	2.1		
3802	2.2		
3803	2.3		

9)

65.0

34.5

(10)

## APPENDIX B

GOOSE POINT/POINTE PLATTE MARSH  
FILL AREA A



Showing perimeter diking  
FILL AREA B



Showing perimeter diking



GOOSE POINT/POINTE PLATTE MARSH  
FILL AREA C



Showing perimeter diking  
FILL AREA D



Showing perimeter diking



GOOSE POINT/POINTE PLATTE MARSH  
FILL AREA E



Showing perimeter diking  
GOOSE POINT/POINTE PLATTE MARSH  
POINT PLATTE BORROW AREA



Dredge Borinquen (background), booster pump barge and anchor barge



GOOSE POINT/POINTE PLATTE MARSH  
MARSH LONG ARM BACK-HOE



Construction Perimeter Diking  
GOOSE POINT/POINTE PLATTE MARSH  
FILL AREA C



Placing dredged material

GOOSE POINT/POINTE PLATTE MARSH  
DREDGE 24-INCH DISCHARGE LAND LINE



Placing dredged material

## APPENDIX C



**T. BAKER SMITH, INC.**  
PROFESSIONAL CONSULTANTS SINCE 1913

412 South Van Avenue Houma, Louisiana 70363 • Post Office Box 2266 Houma, Louisiana 70361  
Main Line: 985.868.1050 • Toll Free: 1.866.357.1050 • Fax: 985.868.5843 • Online: www.tbsmith.com

November 6, 2008

Mr. Ronnie Rhodes  
Weeks Marine, Inc.  
304 Gaille Drive  
Innwoods Business Park  
Covington, LA 70433

Dear Mr. Rhodes:

**Re: Goose Point-Pointe Platte Marsh Creation (PO-33)**  
**Goose Point Post-Dredge Survey**

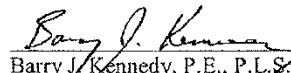
We have completed processing our final survey of the Goose Point Borrow Area for the above referenced project. Attached is a table summarizing the final pay volumes that we have calculated for this area.

The final pay volume of 1,388,192 c.y. was determined by using survey data from your Pre-Dredge survey (8/30/08) and our Post-Dredge survey taken last week (10/29/08). This was calculated by taking the prismoidal volume between these two surveys using all survey data contained within the borrow area boundary.

Hard copies of the point files and drawings will be forwarded to you by mail. If you have any questions, please feel free to call me at 985-868-1050.

Sincerely yours,

**T. BAKER SMITH, INC.**

  
Barry J. Kennedy, P.E., P.L.S.

BJK/pdb

Enc.

08129313

PLANNING      DESIGN      CONSTRUCTION MANAGEMENT      OPERATIONS COMPLIANCE

Goose Point - Point Platte Marsh Creation (PO-33)

**Goose Point Borrow Area - Final Volumes**

Pay Volumes:

Base Survey	Comparison Survey	Cut (c.y)	Fill (c.y)	Desc.
8/30/08 (Weeks)	10/29/08 (TBS)	1,388,192	892	Borrow Area boundary

Total Cut:	1,388,192
------------	-----------



*Barry J. Kennedy*  
11/6/08

Prepared By:



11/6/2008



412 South Van Avenue Houma, Louisiana 70363 • Post Office Box 2266 Houma, Louisiana 70361  
Main Line: 985.868.1050 • Toll Free: 1.866.357.1050 • Fax: 985.868.5843 • Online: www.tbsmith.com

October 21, 2008

Mr. Ronnie Rhodes  
Weeks Marine, Inc.  
304 Gaille Drive  
Innwoods Business Park  
Covington, LA 70433

Dear Mr. Rhodes:

**Re: Goose Point-Pointe Platte Marsh Creation (PO-33)  
Point Platte Post-Dredge Surveys**


We have completed processing our final survey of the Point Platte Borrow Area for the above referenced project (performed on 10/09/08). It is understood that LDNR has approved your Pre and Post Hurricane Gustav surveys and we have therefore included these surveys in our final volume calculations. Attached is a summary of the final pay volumes that we have calculated for this area.

The Pre-Gustav volume of 1,580,468 c.y. was calculated using survey data from our Pre-Dredge survey (4/24/08) and your survey taken just before Hurricane Gustav (8/29/08). This was calculated by taking the prismoidal volume between these two surveys using all survey data within the borrow area boundary. We attempted to use this same boundary for the Post-Gustav volumes but noticed excessively large fill volumes between your post-storm survey and our final survey. Rather than compute the post-Gustav volumes for the entire borrow area, we decided to only analyze the area that was dredged after the storm. This allowed for a more accurate representation of a true cut volume without having to account for misleading Fill volumes. We have also included the total Cut/Fill Volume between our Pre-Dredge survey (4/24) and Post-Dredge survey (10/09).

We will be sending you final a final drawing and a point file for submittal to LDNR in the next few days. If you have any questions, please feel free to call me at 985-868-1050.

Sincerely yours,

**T. BAKER SMITH, INC.**

  
Barry J. Kennedy, P.E., P.L.S.

BJK/pdb

081293t2

PLANNING DESIGN CONSTRUCTION MANAGEMENT OPERATIONS COMPLIANCE

Goose Point - Point Platte Marsh Creation (PO-33)

**Point Platte Borrow Area - Final Volumes**

**Pay Volumes:**

<i>Base Survey</i>	<i>Comparison Survey</i>	<i>Cut (c.y)</i>	<i>Fill (c.y)</i>	<i>Desc.</i>
4/24/08 (TBS)	8/29/08 (Weeks)	1,580,468	2,136	Borrow Area boundary
9/26/08 (Weeks)	10/9/08 (TBS)	124,245	5,160	Dredged Area Only

Total Cut:	1,704,713
------------	-----------

**Additional Volumes:**

<i>Base Survey</i>	<i>Comparison Survey</i>	<i>Cut (c.y)</i>	<i>Fill (c.y)</i>	<i>Desc.</i>
4/24/08 (TBS)	10/9/08 (TBS)	1,542,709	3,945	Borrow Area boundary
8/29/08 (Weeks)	9/26/08 (Weeks)	14,534	23,605	Dredged Area Only

Prepared By:



**T. BAKER SMITH**



10/21/2008



## APPENDIX D



United States Department of the Interior

FISH AND WILDLIFE SERVICE  
646 Cajundome Blvd.  
Suite 400  
Lafayette, Louisiana 70506



September 19, 2008

Mr. Thomas Bernard  
Office of Coastal Protection and Restoration  
CERM Building, Suite 309  
2045 Lakeshore Drive  
New Orleans, Louisiana 70122

Dear Mr. Bernard:

Per our discussion at the September 16, 2008, construction progress meeting for the Goose Point/Point Platte Marsh Creation Project (PO-33), Weeks Marine, Inc. (Weeks Marine) has requested an extension to the hydraulic dredging construction period from September 30, 2008 to October 31, 2008. A hydraulic dredging construction window of May 1, 2008 to September 30, 2008 was stipulated by the U.S. Fish and Wildlife Service (Service) for the PO-33 project to avoid impacts to the threatened Gulf sturgeon. As you are aware, Weeks Marine will not complete hydraulic dredging by September 30, 2008 and have estimated a completion date of October 31, 2008. Hydraulic dredging is presently occurring in Lake Pontchartrain within a designated borrow site.

The Service, after reviewing available data and information regarding Gulf sturgeon use in the vicinity of the borrow site and consulting with the Louisiana Department of Wildlife and Fisheries and the National Marine Fisheries Service, has agreed to extend the hydraulic dredging window to October 31, 2008. Hydraulic dredging from October 1, 2008 to October 31, 2008 must adhere to the following conditions:

- 1) Weeks Marine, or their subcontractor, must conduct twice daily (i.e., morning and afternoon) inspections of the fill site for evidence of Gulf sturgeon (whole fish or parts) transported into the fill site via the hydraulic dredge. Although rare, hydraulic dredges have been reported to pick up bottom-feeding sturgeon and transport them through dredge pipelines. Should evidence of Gulf sturgeon be found within the fill sites, hydraulic dredging should cease immediately and this office should be contacted. Attached are visual aids to assist in identifying Gulf sturgeon.
- 2) Disturbance associated with continuous hydraulic dredging will likely keep sturgeon away from the cutterhead and avoid them being entrained. Should dredging activities cease for longer than 15 minutes, the cutterhead should be lowered into the water only enough to allow water to be pumped through the dredge. Water should be pumped



through the dredge for 10 minutes to allow time for any sturgeon in the area to move away from the dredge before the cutterhead is lowered to the bottom.

- 3) Dredging activities should focus on the southern limits of the borrow site as sturgeon are more likely to be found closer to the Lake Pontchartrain shoreline.

Should you have any questions or comments, please contact Kevin Roy (337/291-3120) or David Walther (337/291-3122) of this office.

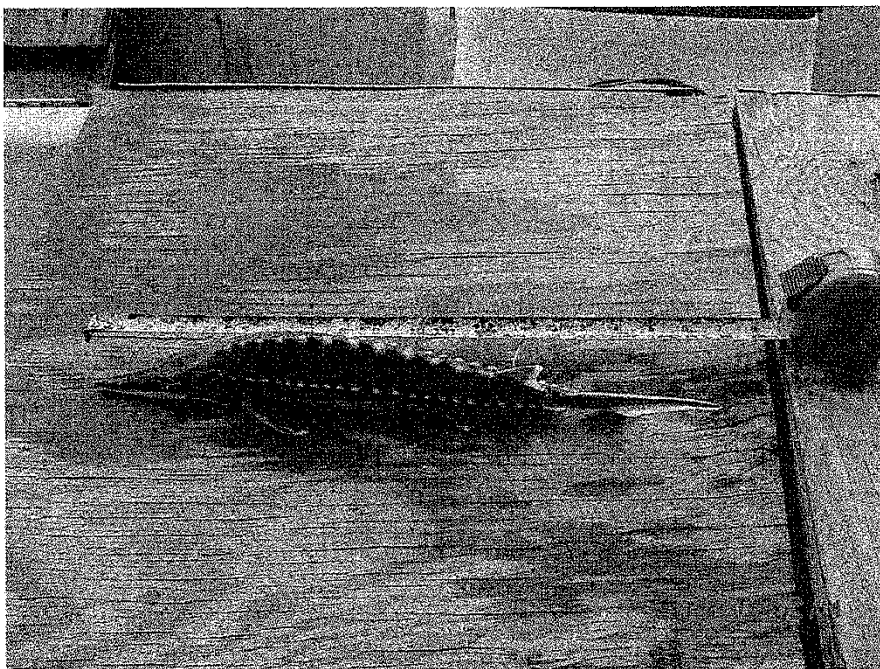
Sincerely,



James F. Boggs  
Supervisor  
Louisiana Field Office

Enclosure

cc: Andrew Beall, Office of Coastal Protection and Restoration, Baton Rouge, LA  
Rudy Simoneaux, Office of Coastal Protection and Restoration, Baton Rouge, LA



## APPENDIX E



# State of Louisiana

BOBBY JINDAL  
GOVERNOR

## MEMORANDUM

December 8, 2008

RECEIVED  
NATURAL RESOURCES  
PURCHASING  
2009 JAN -7 PM 1:39

To: Chet Fruge, Manager, Project Support Section

Through: Christopher Knotts, P.E., Chief, Engineering and Operations Division *CK*

Through: Larry Ardoin, P.E., Operations Administrator *LA*

Through: David Burkholder, P.E., Engineer Manager *DB*

From: Thomas Bernard, P.E., Engineer Supervisor / Construction Manager *TB*

**Subject: Change Order No. 1, Goose Point / Point Platte Marsh Creation Project (PO-33) File Number O 26903 DL, Purchase Order Number 3305474**

Please process the attached Final Contract Change Order No. 1 at your convenience:

The Change in Items No. 2 & 3 is brought about as a result of a variation / increase in the estimated contract quantities necessary to fulfill the requirements of this contract. The contract quantities for Item No. 2 (Hydraulic Dredging) and Item No. 3 (Earthen Containment Dikes) were bid as Unit Price Items and varied upward from the contract quantities. Item No. 6 (Vinyl Sheet Piling) was added to the contract during construction to prevent erosion of the earthen containment dikes in areas where they were located at, or near, the lake rim. This Change Order will increase the original contract price by \$431,374.75 making the revised contract amount **\$12,982,103.75**. This Change Order does not necessitate a change in the Contract Time.

If you have any questions, please call me, Tom Bernard at, Office 504-280-4071, Cell 504-239-3951.

Cc: Contract File

New Orleans Field Office • CERM Suite 309 • 2045 Lakeshore Drive • New Orleans, Louisiana 70122  
(504) 280-4065 • Fax (504) 280-4066  
An Equal Opportunity Employer

**CHANGE ORDER NO. 1**

**OWNER:** State of Louisiana, LDNR, Office of Coastal Protection & Restoration  
**CONTRACTOR:** Weeks Marine, Inc.  
**PROJECT:** Goose Point / Point Platte Marsh Creation Project (PO-33)  
**FILE NO:** O 26903 DL  
**PURCHASE ORDER NO:** 3305474  
**ENGINEER:** BCG Engineering & Consulting, Inc.

**You are directed to make the following changes in the Contract Documents:**

**Description:** The Change in Items No. 2 & 3 is brought about as a result of a variation / increase in the estimated contract quantities necessary to fulfill the requirements of this contract. The contract quantities for Item No. 2 (Hydraulic Dredging) and Item No. 3 (Earthen Containment Dikes) were bid as Unit Price Items and varied upward from the contract quantities. Item No. 6 (Vinyl Sheet Piling) was added to the contract during construction to prevent erosion of the earthen containment dikes in areas where they were located at, or near, the lake rim. This Change Order, which is detailed on page 2, will increase the original contract price by \$147,188.00 making the revised contract amount **\$12,982,103.75**. This Change Order does not necessitate a change in the Contract Time.

**Attachments: None**

Change in Contract Price		Change in Contract Time	
Original Contract Price	\$12,550,729.00	Original Contract Time (calendar days)	270
Net Increase (Decrease) from previous Change Orders	\$0.00	Net Increase (Decrease) from previous Change Orders (calendar days)	0
Contract Price prior to this Change Order	\$12,550,729.00	Contract Time prior to this Change Order (calendar days)	270
Net Increase (Decrease) because of this Change Order, see page 2	\$431,374.75	Net Increase (Decrease) from this Change Order (calendar days)	0
Contract Price with this Change Order	\$12,982,103.75	Contract Time with this Change Order (calendar days)	0

**RECOMMENDED:**

By:   
 BCG Engineering & Consulting, Inc.

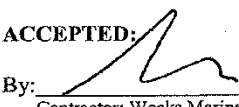
Date: 12/08/08

**APPROVED:**

By:   
 OCP Construction Manager

Date: 12/08/2008

**ACCEPTED:**

By:   
 Contractor; Weeks Marine, Inc.  
 Steven Chatry, V.P.

Date: 12/08/2008

**GOOSE POINT / POINT PLATTE MARSH CREATION (PO-33)  
FILE NO: O 26903 DL, PURCHASE ORDER NO: 3305474**

**SUMMARY OF CHANGE ORDER NO. 1**

Description	Quantity	Unit	Unit Price	Amount
<b>Item No. 2 – Hydraulic Dredging</b> This item is paid for by the Cubic Yards of material excavated from two borrow pits. The Original Contract Quantity is 3,008,700 C.Y. and the actual quantity is 3,092,905 C.Y. <u>or</u> 84,205 C.Y. more than the original contract quantity.	84,205	C.Y.	\$3.35	\$282,086.75
<b>Item No. 3 – Earthen Containment Dikes</b> This item is paid for by the Linear Foot. The Original Contract Quantity is 49,557 L.F. and the actual quantity is 49,732 L.F. <u>or</u> 175 L.F. more than the original contract quantity.	175	L.F.	\$12.00	\$2,100.00
<b>Item No. 6 – Vinyl Sheet Piling</b> This item is paid for by the Linear Foot. It was <u>added</u> to the contract during construction to prevent erosion of the earthen containment dikes in areas where they were located at or near the lake rim.	620	L.F.	\$237.40	\$147,188.00
<b>Net Increase in Contract Price due to this Change Order -----</b>				<b>\$431,374.75</b>



## REQUEST FOR COST QUOTE

November 5, 2008

**OWNER:** State of Louisiana, LDNR, Office of Coastal Protection & Restoration  
**CONTRACTOR:** Weeks Marine, Inc.  
**PROJECT:** Goose Point / Point Platte Marsh Creation Project (PO-33)  
**FILE NO:** O 26903 DL  
**PURCHASE ORDER NO:** 3305474  
**ENGINEER:** BCG Engineering & Consulting, Inc.

Weeks Marine, Inc. is requested to review the attached three Field Change Drawings to install Vinyl Sheet Pile Reinforcement to three locations on the dike of Area D; and, install a closure weir on the shoreline of Lake Pontchartrain opposite Area E. Weeks Marine is also requested to submit a cost per linear foot of installed sheet piling cost proposal to procure all necessary materials and deliver to each site, provide all necessary equipment, tools, consumables and labor, and install approximately 620 linear feet of cantilevered sheet pile reinforcement walls at four sites as described on the attached drawings. The cost shall include providing an airboat service from the USF&W dock during the installation period to allow for the Owner, Engineer and Inspector to inspect the work progress.

Description: This added work does not necessitate a change in the Contract Time, since the completion date is February 19, 2009.

Attachments: Three Engineering Field Sketches to describe to work being requested:

- Marsh Area D Plan
- Marsh Area E Plan
- Typical Sheet Pile Installation

Weeks Marine, Inc. herewith agrees to install 620 Linear Feet of Vinyl Sheet pile as described above and on the attached drawings for the unit price per linear foot of \$237.40, totaling \$147,188. This cost if accepted by the OCPR/ LDNR will be included in the final change order to the subject project.

## OFFERED BY:

By: Michael D. Ernst  
General Manager  
Contractor, Weeks Marine, Inc.

Date: 04 December 2008

## RECOMMENDED BY:

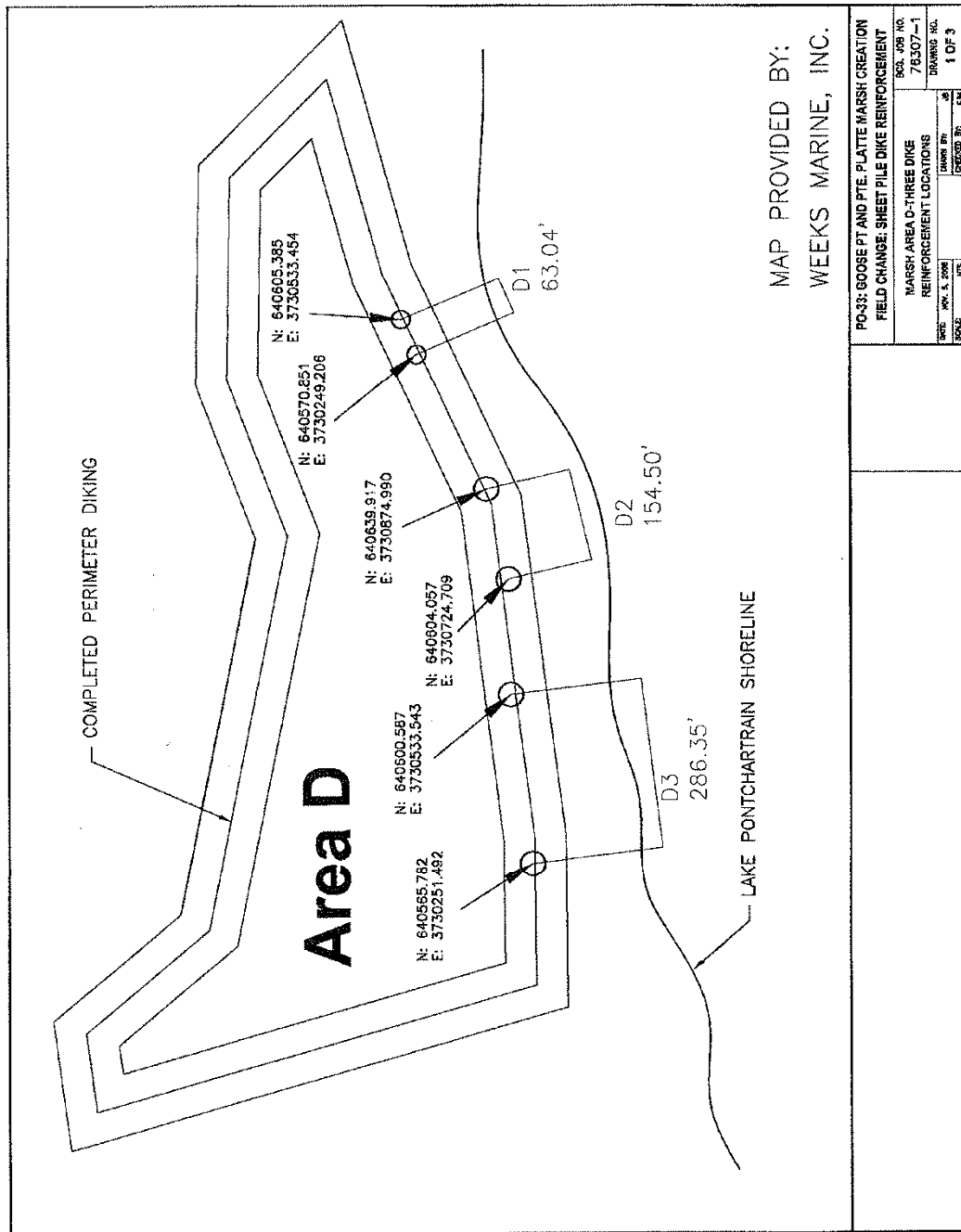
By: [Signature]  
BCG Engineering & Consulting, Inc.

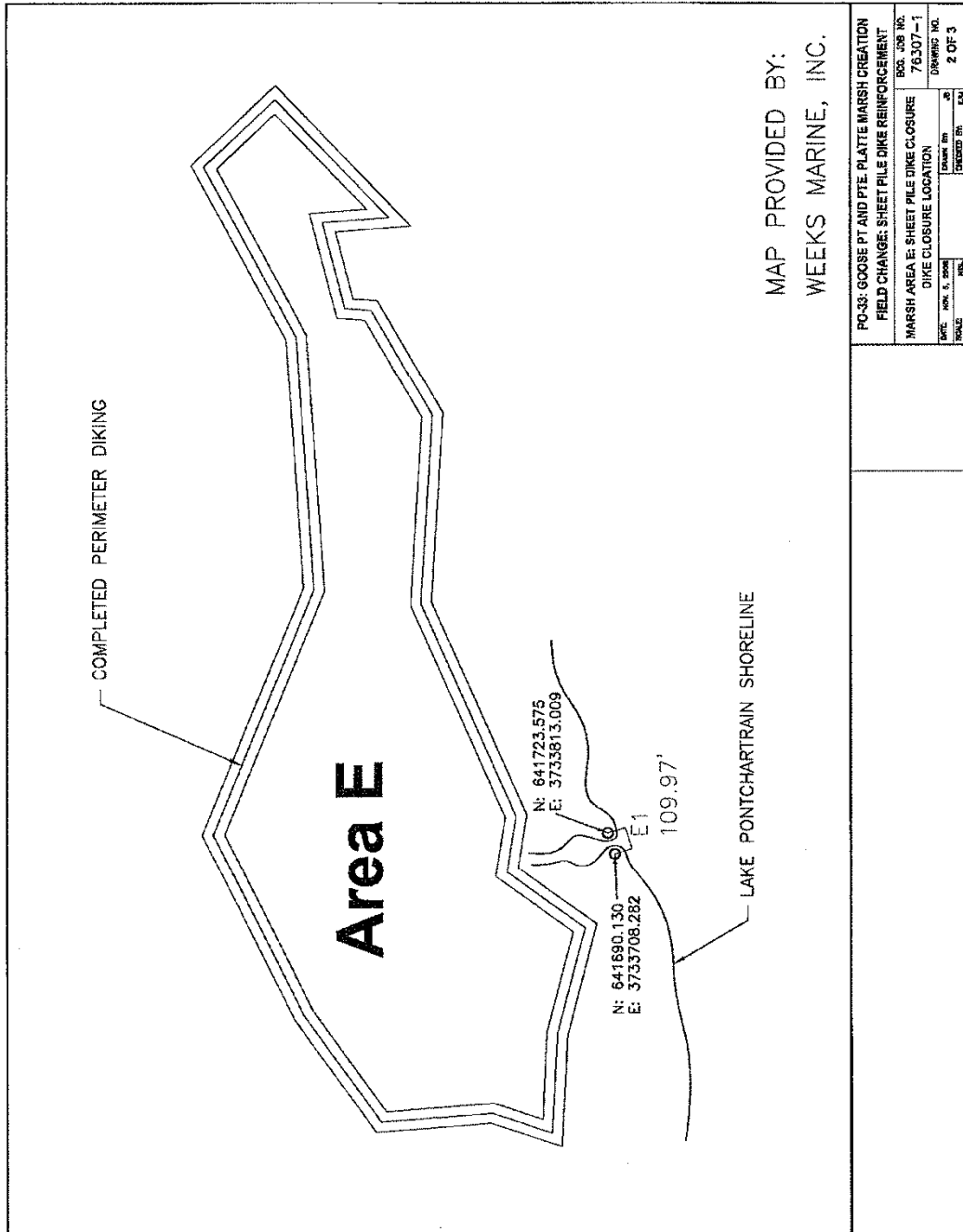
Date: 12-5-08

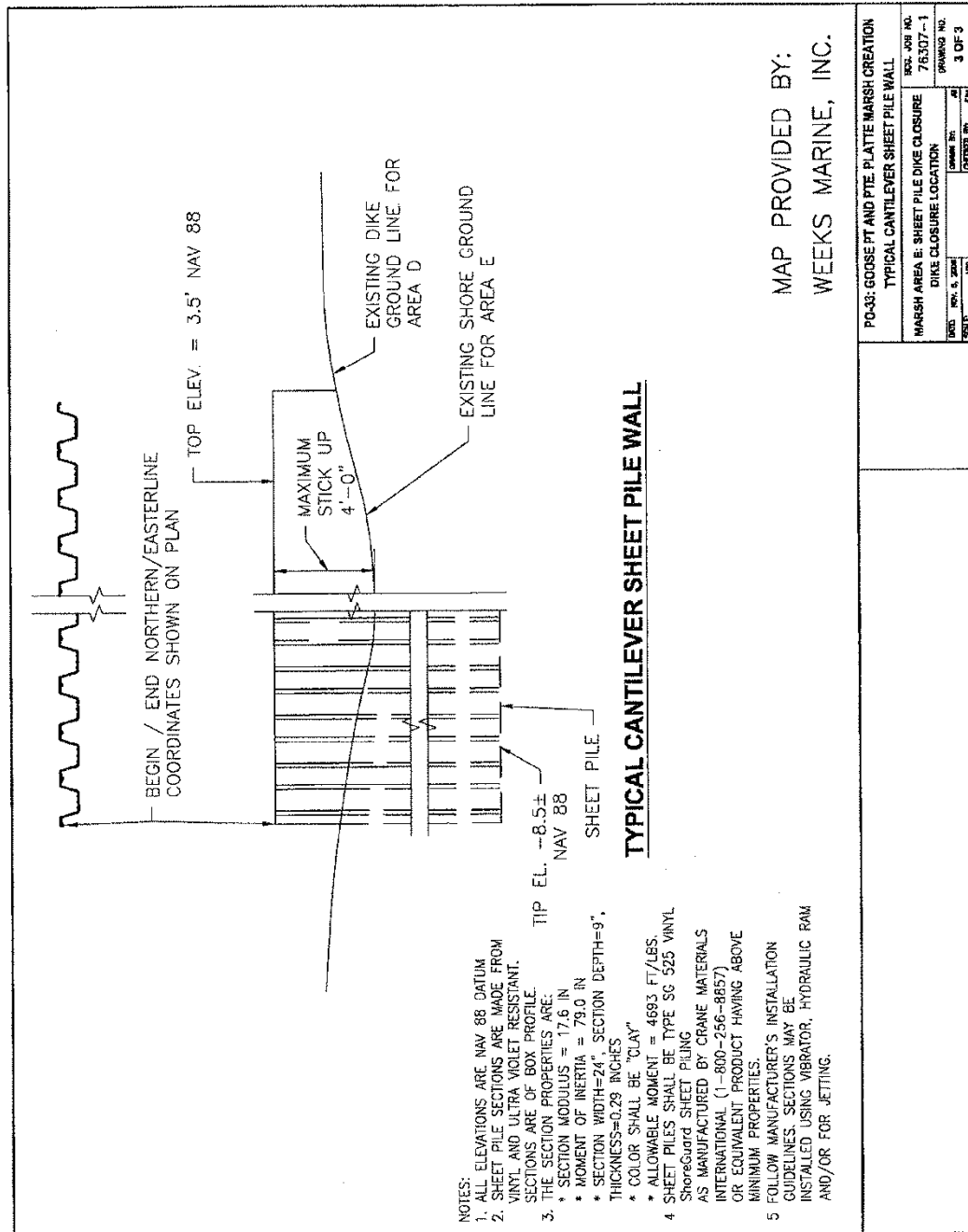
## APPROVED BY:

By: [Signature]  
OCPR Construction Manager.

Date: 12-08-08









## ORDER CHANGE

STATE OF LOUISIANA  
OFFICE OF STATE PURCHASING  
DELEGATED PURCHASE AUTHORITY

CHANGE NUMBER 02		DATE PRINTED 06/02/09	ORDER NUMBER 3414867
VENDOR NAME, STREET, CITY, STATE, ZIP CODE WEEKS MARINE INC 304 GAILLE DR COVINGTON, LA 70433		ALL TERMS AND CONDITIONS IN THE SOLICITATION ARE PART OF THIS ORDER AS IF FULLY REPRODUCED HEREIN.	
BILL TO: DEPARTMENT OF NATURAL RESOURCES COASTAL RESTORATION DIVISION ATTN: PROJECT MANAGER P O BOX 44027 BATON ROUGE, LA 70804-4027		FILE NUMBER: PURCHASING AGENCY NO.: 107001 FY: 09	
		ADDRESS ALL INQUIRIES AND CORRESPONDENCE TO: TOM KETTERER (225)342 8022	
		SHIP FOB DESTINATION TO: (UNLESS SPECIFIED ELSEWHERE) DEPARTMENT OF NATURAL RESOURCES OCPR PROJECT MANAGER PROJECT SITE, LA 00000	
		CONTACT FOR DELIVERY INSTRUCTIONS (NAME, TELEPHONE) TOM BERNARD / SAM PRIDDY (504)280-4071-5023	
VENDOR NO. 135475870-00	AWARD CODE N	SOLIC CODE N	BUYER CODE D
COMPL CODE F	ISS REQ NUMBER	AGENCY REQ NUMBER CED080020	SOLICIT NUMBER
CONTRACT NUMBER		REQ AGENCY: 435002 OFFICE OF STATE PURCHASING DEPT OF NATURAL RESOURCES	
PROMPT PAYMENT TERMS NONE		DELIVERY TERMS/FOB POINT 060 DAYS ARO DESTINATION	TOTAL AMOUNT OF THIS CHANGE \$ 13495.00
		TYPE OF CHANGE INCREASE FUNDS	NET ORDER AMOUNT \$ 12895588.75
LINE NO.	COMMODITY/SERVICE DESCRIPTION	QUANTITY	UNIT
00001	COMMODITY CODE: 962-73-000000 DELIVERY TERMS: 060 DAYS ARO FILE #026903DL PO# 3305474 FURNISH ALL MATERIALS, LABOR, SUPPLIES, TOOLS AND EQUIPMENT NECESSARY FOR THE GOOSE POINT/POINT PLATTE MARSH CREATION PROJECT (PO-33), ST. TAMMANY PARISH FOR PAYMENT SEND INVOICES TO: NATURAL RESOURCES, CRMD ATTN: TOM BERNARD CERM BLDG RM 309 2045 LAKESHORE DR NEW ORLEANS, LA 70122 ORIGINAL CONTRACT AMOUNT \$ 12,550,729.00 PLUS CHANGE ORDER 01 \$431,374.75 NEW CONTRACT AMOUNT \$12,982,103.75 LESS PAYMENTS \$12,322,898.37 PLUS C002 \$13,495.00 NET AMOUNT \$ 662,600.38 (PROCESSED ONLY TO HAVE CHANGE ORDER 01	1	JOB
			UNIT PRICE \$ 6000000.00
			EXTENDED AMOUNT \$ 6000000.00
APPROVED: DENISE LEA DIRECTOR OF STATE PURCHASING			

CHANGE ORDER		INCREASE FUNDS		
NUMBER : 3414867 VENDOR NUMBER : 135475810-00		VENDOR: WEEKS MARINE INC		PAGE 2
COMMODITY/SERVICE DESCRIPTION	QUANTITY	UNIT	UNIT PRICE	EXTENDED AMOUNT
APPROVED. ALWAYS USE PO# 3305474)				
00002 COMMODITY CODE: 962-73-000000 DELIVERY TERMS: 060 DAYS ARO CONTINUED FROM LINE 00001	1	JOB	\$ 6000000.00	\$ 6000000.00
00003 COMMODITY CODE: 962-73-000000 DELIVERY TERMS: 060 DAYS ARO CONTINUED FROM LINE 00001	1	JOB	\$ 982103.75	\$ 982103.75
00004 COMMODITY CODE: 962-73-000000 DELIVERY TERMS: 060 DAYS ARO CHANGE ORDER 02 ***** ITEM # 7 FLOTATION CHANNELS EXTEND COMPLETION TIEM FROM 270 TO 278 CALANDAR DAYS.	1	JOB	\$ 13495.00	\$ 13495.00

ATTACHMENT TEXT		INCREASE FUNDS	
NUMBER : 3414867 VENDOR NUMBER: 135475810-00		VENDOR: WEEKS MARINE INC	PAGE 3
<p>TO ADD ITEM 7 FLOTATION CHANNELS TO THE CONTRACT NEEDED AS A RESULT OF AN UNANTICIPATED CHANGE IN THE TIDAL CONDITIONS AS PER ATTACHED JUSTIFICATION AND AGREEMENT BETWEEN WEEKS MARINE AND DNR.</p> <p>TO EXTEND THE COMPLETION DATE FROM 270 TO 278 CALENDAR DAYS.</p>			



# State of Louisiana

BOBBY JINDAL  
GOVERNOR

## MEMORANDUM

March 13, 2009

To: Chet Fruge, Manager, Project Support Section

Through: Christopher Knotts, P.E., Chief, Engineering and Operations Division

Through: Larry Ardoin, P.E., Operations Administrator

Through: David Burkholder, P.E., Engineer Manager

From: Thomas Bernard, P.E., Engineer Supervisor / Construction Manager *tb*

**Subject: Change Order No. 2, Goose Point / Point Platte Marsh Creation Project (PO-33) File Number O 26903 DL, Purchase Order Number 3305474**

Please process the attached Final Contract Change Order No. 2 at your convenience:

This Change Order No. 2 will add an "Item No. 7 (Flotation Cannels)" to the contract. It is added as a result of an unanticipated change in the tidal conditions experienced during the execution of Change Order No 1, which added Item No. 6 Vinyl Sheet Piling to the contract. Because of these unusually lower than normal tidal ranges, the contractor was directed to excavate a flotation channel at each location to get his equipment into the project area to perform the work. This flotation channel was neither anticipated nor included in the request for proposal associated with Change Order No.1. In addition the contractor had to stand-by on site in anticipation of rising tides which allowed him to float his equipment to the job site. This caused him to exceed his contract period by 8 calendar days increasing the Contract Time from 270 to 278 calendar days through January 27, 2009. This Change Order No. 2 will increase the contract price by \$13,495.00 making the revised contract amount **\$12,995,598.75.**

If you have any questions, please call me, Tom Bernard at, Office 504-280-4071, Cell 504-239-3951

New Orleans Field Office  
2045 Lakeshore Drive • CERM Building Suite 309 • New Orleans, Louisiana 70122  
(504) 280-4065 • Fax (225) 280-4066 • <http://www.lacpra.org/>  
An Equal Opportunity Employer



## CHANGE ORDER NO. 2 & FINAL

**OWNER:** State of Louisiana, CPRA, Office of Coastal Protection & Restoration  
**CONTRACTOR:** Weeks Marine, Inc.  
**PROJECT:** Goose Point / Point Platte Marsh Creation Project (PO-33)  
**FILE NO:** O 26903 DL  
**PURCHASE ORDER NO:** 3305474  
**ENGINEER:** BCG Engineering & Consulting, Inc.

**You are directed to make the following changes in the Contract Documents:**

### **Description:**

This Change Order No. 2 will add an "Item No. 7 (Flotation Cannels)" to the contract. It is added as a result of an unanticipated change in the tidal conditions experienced during the execution of Change Order No. 1, which added Item No. 6 Vinyl Sheet Piling to the contract. Because of these unusually lower than normal tidal ranges, the contractor was directed to excavate a flotation channel at each location to get his equipment into the project area to perform the work. This flotation channel was neither anticipated nor included in the request for proposal associated with Change Order No.1. In addition, the contractor had to stand-by on site in anticipation of rising tides which allowed him to float his equipment to the job site. This caused him to exceed his contract period by 8 calendar days increasing the Contract Time from 270 to 278 calendar days through January 27, 2009. This Change Order No. 2 will increase the contract price by \$ 13,495.00, making the revised contract amount \$12,995,598.75.

**Attachments:** Contractor's request for this change and Recommendation from the Engineer that OCPR accept this change as submitted.

Change in Contract Price		Change in Contract Time	
Original Contract Price	\$12,550,729.00	Original Contract Time (calendar days)	270
Net Increase (Decrease) from previous Change Orders	\$431,374.75	Net Increase (Decrease) from previous Change Orders (calendar days)	0
Contract Price prior to this Change Order	\$12,982,103.75	Contract Time prior to this Change Order (calendar days)	270
Net Increase (Decrease) because of this Change Order, see page 2	\$13,495.00	Net Increase (Decrease) from this Change Order (calendar days)	8
(Final) Contract Price with this Change Order	\$12,995,598.75	Contract Time with this Change Order (calendar days)	278

### **RECOMMENDED:**

By:

BCG Engineering & Consulting, Inc.

Date:

3/16/09

### **APPROVED:**

By:

OCPR Construction Manager

Date:

### **ACCEPTED:**

By:

Contractor: Weeks Marine, Inc.

V. STEPHEN CHATRY

Date:

3/16/09

**GOOSE POINT / POINT PLATTE MARSH CREATION (PO-33)**  
**FILE NO: O 26903 DL, PURCHASE ORDER NO: 3305474**

**SUMMARY OF CHANGE ORDER NO. 2**

Description	Quantity	Unit	Unit Price	Amount
Item No. 2 – Flotation Channels	1	Lump Sum	\$13,495.00	\$13,495.00
Net <u>Increase</u> in Contract Price due to this Change Order -----				\$13,495.00

## PAYMENT SUMMARY

### **Goose Point/Point Platte Marsh Creation Project (PO-33)**

Weeks Marine, Inc. P.O. No. 3305474 File No. O26903DL

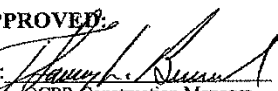
Original Contract Amount	\$12,550,729.00
Change Order No. 1	+ \$431,374.75
Change Order No. 2	+ \$13,495.00
<b>Final Adjusted Total Contract Amount</b>	<b><u>\$12,995,598.75</u></b>

Invoice No.	Earned This Period	Retained (5%)	Invoice Amount	Earned To Date	Contract Balance
1	\$551,916.00	\$27,595.80	\$524,320.20	\$551,916.00	\$11,998,813.00
2	\$500,504.00	\$25,025.20	\$475,478.80	\$1,052,420.00	\$11,498,309.00
3	\$2,412,432.40	\$120,621.62	\$2,291,810.78	\$3,464,852.40	\$9,085,876.60
4	\$974,249.25	\$48,712.46	\$925,536.79	\$4,439,101.65	\$8,111,627.35
5	\$2,354,882.65	\$117,744.13	\$2,237,138.52	\$6,793,984.30	\$5,756,744.70
6	\$1,193,434.65	\$59,671.73	\$1,133,762.92	\$7,987,418.95	\$4,563,310.05
7	\$4,008,310.05	\$200,415.50	\$3,807,894.55	\$11,995,729.00	\$555,000.00
8	\$545,000.00	\$27,250.00	\$517,750.00	\$12,540,729.00	\$10,000.00
9	\$441,374.75	\$22,068.74	\$419,306.01	\$12,982,103.75	CO #1 (\$0.00)
10	\$13,495.00	\$674.75	<b><u>\$12,820.25</u></b>	\$12,995,598.75	CO #2 (\$0.00)

---

Thomas L. Bernard, P.E., OCPR Construction Manager

**APPROVED:**

By:   
OCP Construction Manager