



## **Coastal Protection and Restoration Authority of Louisiana**

### **Office of Coastal Protection and Restoration**

## **2011 Annual Inspection Report**

### **Barataria Bay Waterway East Bank Protection**

State Project Number BA-26  
Priority Project List 6

July 26, 2011  
Jefferson Parish

Prepared by:

Barry Richard, P.E.  
CPRA/ Office of Coastal Protection and Restoration  
New Orleans Field Office  
CERM, Suite 309  
2045 Lakeshore Dr.  
New Orleans, La 70122

## **Table of Contents**

I. Introduction.....	1
II. Project Description and History.....	1
III. Inspection Purpose and Procedures.....	1
IV. Inspection Results .....	2
V. Conclusions.....	2
VI. Recommendations.....	2
Immediate Repairs .....	2
Programmed Maintenance .....	2

## **Appendices**

Appendix A	Project Features Map
Appendix B	Photographs
Appendix C	Three Year Budget Projections
Appendix D	Field Inspection Form

## **I. Introduction**

The Barataria Bay Waterway East Bank Protection Project (BA-26) encompasses 2,790 acres (880 ha) brackish marsh and open water habitat on the east bank of the Barataria Bay Waterway located in the Barataria Basin, Jefferson Parish, Louisiana approximately 1.5 miles south of Lafitte. The Project is bounded by the Barataria Bay Waterway to the west, Barataria Bay Shoreline to the east and Bayou Dupont to the north (Appendix A).

## **II. Project Description and History**

The Barataria Bay Waterway East Bank Protection Project includes approximately 17,100 linear feet (3.2 miles) of foreshore rock dike bank line protection and an earthen hydrologic barrier created from dredged material from the Barataria Bay Waterway Channel placed to the East along the rock dike within the project area. The rock structure was constructed with a synthetic clay core to reduce its overall weight. The clay material was encapsulated in geotextile bags and placed along the centerline of the dike. The dike is intended to protect the adjacent marsh, and to re-establish the eastern bank of the Barataria Bay Waterway, from unnatural water exchange and subsequent erosion which is exacerbated by wakes from vessel traffic on the waterway.

Project construction began on February 19, 2001, and was completed on May 21, 2001. Project life is estimated to be 20 years. Annual project inspections are planned.

In December, 2005, a contract to raise these structures was awarded and resulted in the placement of 17,417 tons of rock riprap on the settled sections of the structure. The work was completed on January 24, 2006.

## **III. Inspection Purpose and Procedures**

The purpose of the annual inspection of the Barataria Bay Waterway East Bank Protection Project (BA-26) is to evaluate the constructed project features to identify any deficiencies and prepare a report detailing the condition of project features and recommended corrective actions needed. Should it be determined that corrective actions are needed, OCPR shall provide, in the report, a detailed cost estimate for engineering, design, supervision, inspection, and construction contingencies, and an assessment of the urgency of such repairs (O&M Plan August 9, 2002). The annual inspection report also contains a summary of maintenance projects and an estimated projected budget for the upcoming three (3) years for operation, maintenance and rehabilitation. The three (3) year projected operation and maintenance budget is shown in Appendix C. A summary of past operation and maintenance projects completed since completion of the project are outlined in Section II.

An inspection of the Barataria Bay Waterway East Bank Protection Project (BA-26) was held on April 21, 2011, by Barry Richard of OCPR and Quin Kinler and Mike Trusclair of NRCS. Photographs of that inspection are included in Appendix B of this report.

## **IV. Inspection Results**

### **Rock Riprap**

There are no noticeable damages to the rock structure since the previous inspection (Photo #1). More settlement has been observed in front of the marsh creation portion of the South Shore of the Pen Project (BA-41, Photo #2). A small gap in the rock structure was seen at approximate coordinates N29.61380°, W 090.07905°. This gap is probably the result of vandalism and should be monitored (Photo #3). Some accretion and vegetation was observed behind the rock structure at the north end of the project.

## **V. Conclusions**

The Barataria Bay Waterway East Protection Project (BA-26) is performing as intended. The rock dike is protecting the existing marsh as designed. Some settlement has been observed and will continue to be monitored; however, the structure should perform adequately through the next programmed maintenance lift.

## **VI. Recommendations**

### **Immediate Repairs**

- No immediate repairs are necessary at this time.

### **Programmed Maintenance**

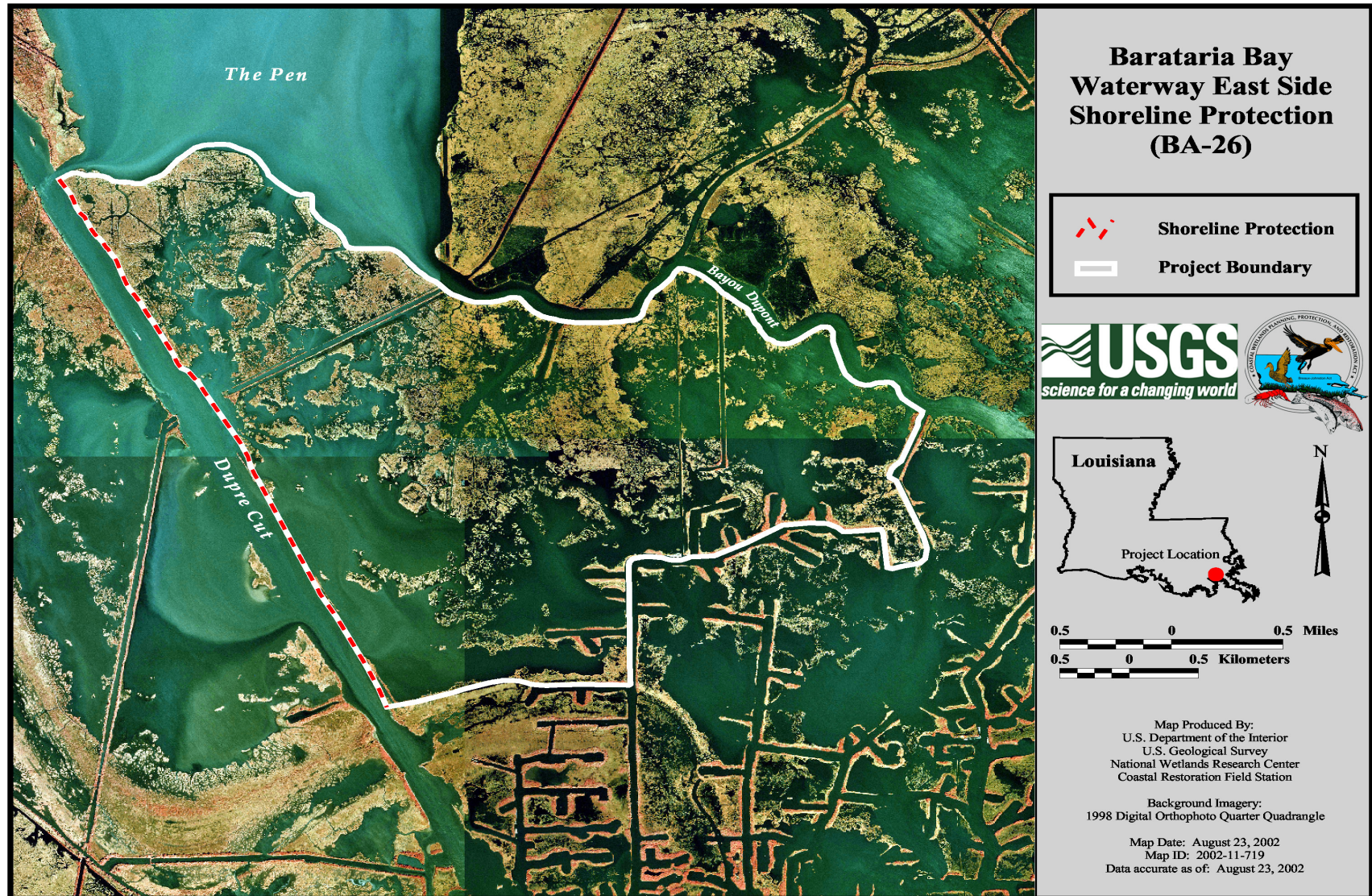
- Continue to monitor the settlement of the rock structure.

Annual Inspection Report  
Barataria Bay Waterway East Bank Protection  
State Project No. BA-26

## **Appendix A**

### **Project Features Map**





## **Appendix B**

### **Photographs**





**Photo #1 – Gap.**



**Photo # 2 – Shoreline Protection.**





**Photo # 3 – Accretion.**

## **Appendix C**

### **Three Year Budget Projection**

Annual Inspection Report  
Barataria Bay Waterway East Bank Protection  
State Project No. BA-26

Barataria Bay Waterway East Bank Protection (BA-26)

Federal Sponsor: NRCS  
Construction Completed : 5/2001  
PPL 6

Current Approved O&M Budget	Year 0 FY02	Year - 1 FY03	Year -2 FY04	Year -3 FY05	Year -4 FY06	Year -5 FY07	Year -6 FY08	Year -7 FY09	Year -8 FY10	Year -9 FY11	Year -10 FY12	Year -11 FY13	Year -12 FY14	Year -13 FY15	Year -14 FY16	Year -15 FY17	Year -16 FY18	Year - 17 FY19	Year -18 FY20	Year -19 FY21	Project Life Budget	Currently Funded
State O&M	\$0	\$0	\$0	\$0	\$0	\$0	\$0	\$0	\$0	\$0	\$0	\$0	\$0	\$0	\$0	\$0	\$0	\$0	\$0	\$0	\$1,228,500	\$455,687
Corps Admin	\$0	\$0	\$0	\$0	\$0	\$0	\$0	\$0	\$0	\$0	\$0	\$0	\$0	\$0	\$0	\$0	\$0	\$0	\$0	\$0	\$0	\$0
Federal S&A	\$0	\$0	\$0	\$0	\$0	\$0	\$0	\$0	\$0	\$0	\$0	\$0	\$0	\$0	\$0	\$0	\$0	\$0	\$0	\$0	\$0	\$0
Total																					\$1,228,500	\$455,687

Projected O&M Expenditures																					Remaining Project Life	Current 3 year Request
Maintenance Inspection										\$3,658	\$3,753	\$3,851	\$3,951	\$4,054	\$4,159	\$4,267	\$4,378	\$4,492	\$4,609	\$4,728	\$45,899	\$0
General Maintenance																					\$0	\$0
Surveys													\$60,000								\$60,000	\$0
Sign Replacement																					\$0	\$0
Federal S&A																					\$0	\$0
Maintenance/Rehabilitation																					\$0	\$0
E&D														\$12,000							\$12,000	\$0
Construction														\$300,000							\$300,000	\$0
Construction Oversight														\$75,000							\$75,000	\$0
Total										\$3,658	\$3,753	\$3,851	\$63,951	\$391,054	\$4,159	\$4,267	\$4,378	\$4,492	\$4,609	\$4,728	\$492,899	\$0

Total

Notes:  
  
1. The year-by-year figures for the current Approved O&M Budget are based on the BEAST approved at the 6/3/09 Task Force meeting. This spreadsheet was a correction to the BEAST submitted for theFall 2008 funding requests.

O&M

State

Federal Sponsor MIPRs (if applicable)

\$0

Total Estimated O&M Expenditures (as of April 2010)

\$772,813

Current O&M Budget less COE Admin	\$1,228,500	Current Project Life Budget less COE Admin	\$1,228,500
Remaining Available O&M Budget	\$455,687	Total Projected Project Life Budget	\$1,265,712
Incremental Funding Request Amount FY12-FY14	\$37,212	Project Life Budget Request Amount	\$37,212

## **Appendix D**

### **Field Inspection Form**

**MAINTENANCE INSPECTION REPORT CHECK SHEET**

Project No. / Name: **BA-26 Barataria Waterway (East) Shoreline Protection**

Date of Inspection: 4/21/2011

Time: 9:30 am

Structure No. no number assigned

Inspector(s): Richard, Kinler, Trusclair

Structure Description: Foreshore Rock Dike

Water Level

Inside: N/A

Outside: 0.80'

Type of Inspection: Annual

Weater Conditions: Partly Cloudy, Moderate Wind

Item	Condition	Pysical Damage	Corrosion	Photo #	Observations and Remarks
Foreshore Rock Dike	Good	small gap	None	1, 2, 3	small gap at approx. coordinates N29.61380, W090.07904
					some settlement, no action, continue observing
Settlement Plates	Good	None	None		
Signage /Supports	Good	None	None		