

Coastwide Reference Monitoring System - *Wetlands*

Status Report for the
CWPPRA Task Force
November 2, 2005

CRMS-Wetlands Status Report Outline

■ MILESTONES

- Landrights
- CSA
- SOP Manual
- Contracting
 - Data collection
 - Equipment
- Implementation
 - Training
 - Preliminary Site Visits
 - Secondary Benchmarks
 - Site Construction

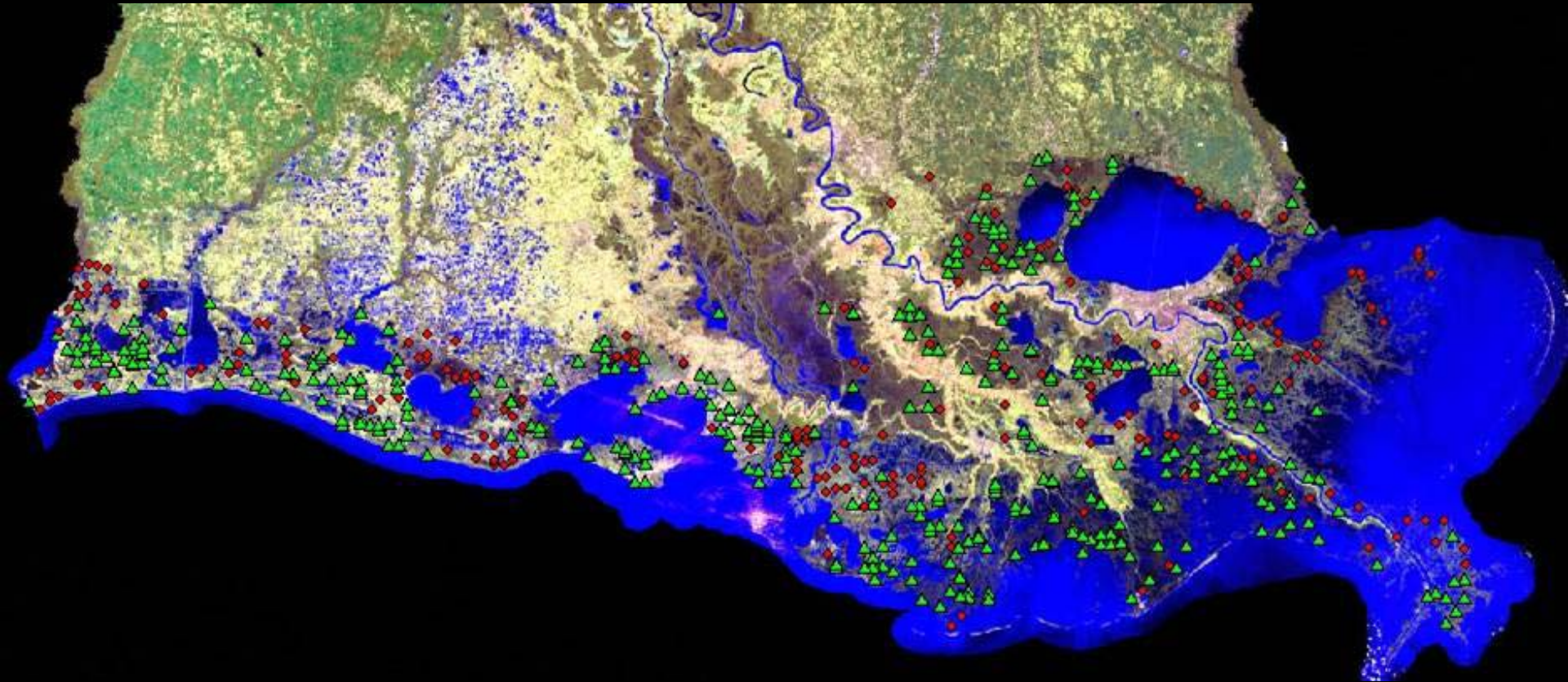
■ PROJECTIONS FOR NEXT FY

■ INFORMATION MANAGEMENT

- CRMS website

■ FUNDING AUTHORIZATIONS and CURRENT REQUEST

Coastwide Reference Monitoring System - *Wetlands*



September 26, 2005 Landrights Status:

▲ SECURED: 413

● PENDING: 199

LANDRIGHTS

CRMS-Wetlands: Milestones

- Cost Share Agreement
 - finalized on June 8, 2004
 - USGS is the Federal Sponsor



CRMS-Wetlands : Milestones

- SOP Manual
 - Updated in August 2005
 - 226-pages
 - Details of site characterization, site construction, data collection, and QA/QC methods

8 10:59 AM

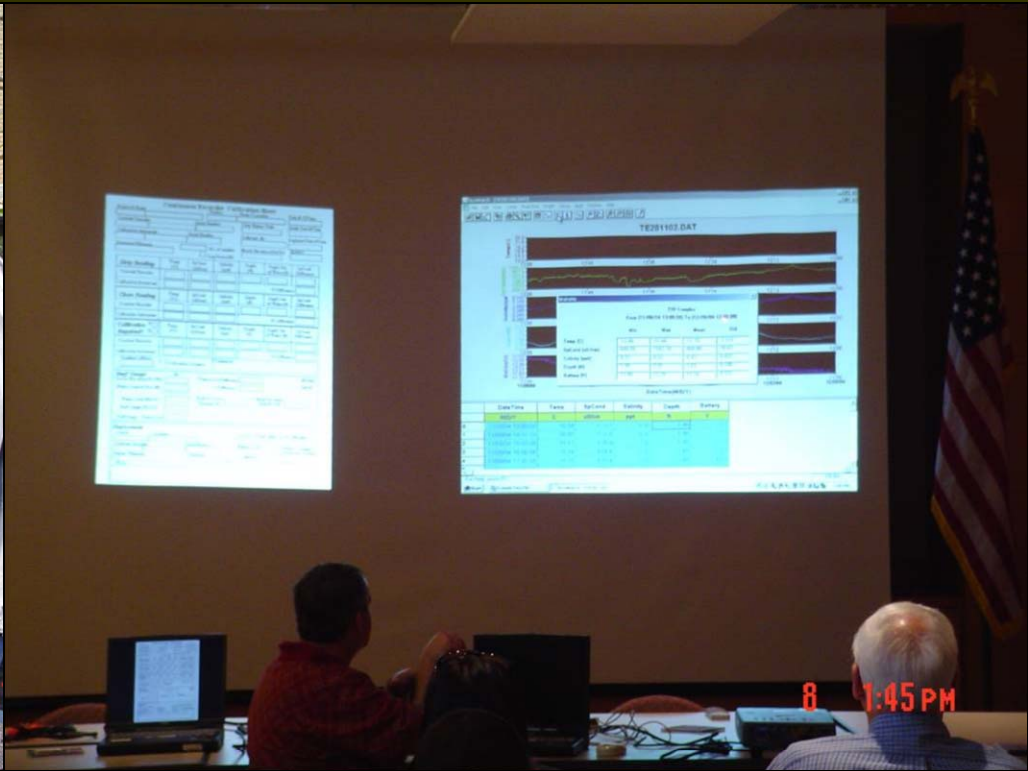
CRMS-Wetlands: Milestones

- Contracting
 - Data collection contractor, Coastal Estuary Services
 - Equipment contractor, Hach Environmental



CRMS-Wetlands : Implementation

- Training:
 - Hydrographic Equipment: March 8



CRMS-Wetlands : Implementation

- Training:
 - Hydrographic Equipment: March 8
 - CRMS Site Visits and Construction: April 4-6



CRMS-Wetlands : Implementation

- Training dates:
 - Hydrographic Equipment: March 8
 - CRMS Site Visits and Construction: April 4-6



CRMS-Wetlands : Implementation

- Site Characterization Report: 141 completed to date

14-2004 15:55
LDNR/CORSTAL RESTORATION
504 342 6801 P.03

Site Characterization Sheet (Page 1 of 3)

Site: CRMS0489 (Annual) Basin: TV
Date and Time (CST) of Site Visit: 06/15/2005 @ 08:46 Agency: CES
Field Personnel: B. Handley, G. Thibodeau, J. Carcenne, R. Brousard Weather: Clear, 90°F, Winds SW @ 0 - 5 mph

1. Site Location and Access: Has site been relocated from original CRMS centerpoint? ☐ Yes ☐ No
Easting: 641213 Northing: 3275486
Site Coordinates (Center Point, UTM, NAD83 Meters)
Access: Nearest City: Burns Highway Access: Rt. 317
Boat Ramp: Burns Point Rec. Area Landing
Type of Water Vessel: Any
Directions from field office: Follow Hwy. 14 east to US-90. Take US-90 south to the Rt. 317 exit toward Burns Point/Centerville. Turn right and take Rt. 317 to Burns Point. The Rec. Area will be on the right. Pay \$1.00 entry fee. The ramp is at the end of the road.
Direction from boat ramp to site: Follow the coast to the north. Just past the second large keyhole, enter a small bayou. The sonde is placed on the right side about 30m/100ft. up the bayou. The center is 15m/50ft into the marsh from there.
Site Restrictions: Contact Clyde Breaux (337-836-9481) for Delores Arnaud prior to visit.
Location of Secondary Benchmark: TV04-SM-03
Other: See Site Location and Access (continued), Page 3

2. Continuous Recorder Details:
Easting: 641203 Northing: 3275496
Coordinates of Location (UTM, NAD 83 Meters)
Recommended Set-up (Wooden post, Mono-pole, Well): Wooden post
Description of area (describe water body (size, depth, consistency of bottom), distance from edge, salinity): 158/5m wide, 2.25m/0.8m deep, very steep-sided, moderately firm-bottomed trenaissance, 30.3°C, 47 l/s, 0.2ppt, sonde 2m/0.6m from edge.

3. Boardwalk Details:
Easting: 641213 Northing: 3275486
Coordinates of Access Point (UTM, NAD83 Meters)
Direction/Bearing of Access Boardwalk (degrees): No access boardwalk required
Approximate length of Access (Additional) Boardwalk (ft): No access boardwalk required
Direction/Bearing of Base Boardwalk (degrees): 138°

4. Site Layout Details: (airboat access direction, vegetation transect orientation, RSET location, etc)
Airboat access is from the SW, veg. transect NE-SW, RSET SW of base boardwalk

5. Photos:

Number	Direction	Time Stamp	Number	Direction	Time Stamp
1	N	9:43			
2	E	9:43			
3	S	9:43			
4	W	9:43			

Site Characterization Sheet (Page 2 of 3)

Site: CRMS0489 (Annual) Basin: TV
Date and Time (CST) of Site Visit: 06/15/2005 @ 08:46 Agency: CES

6. Vegetation:
Dominant Species: *Sagittaria lancifolia*, *Leersia oryzoides*
Current Marsh Type: Fresh Bulltongue
Visser/Sasser Marsh Type: Oligohaline Spikerush

7. Marsh Characteristics:
Other Species Present: *Eleocharis tuberculosa*, *Vigna luteola*, *Schoenoplectus californicus*, *Typha latifolia*, *Cladium mariscus* ssp. *jamaicense*, *Polygonum* spp., *Daucus carota*, *Pontederia cordata*, *Panicum hemitomon*, *Ipomoea sagittata*, *Symphoricarum tenuifolium*, *Eichhornia crassipes*
Vegetation Characteristics (average height, grazing, burning, herbivory, wrack deposition, etc): Vegetation generally 5ft/1.5m tall; no evidence of grazing, burning, or wrack, but active herbivory by caterpillars
Marsh Stability (brokenness, soil consolidation, edge shearing): Very firm and well consolidated, no edge shearing
Water on Marsh (depth, salinity): N/A
Other: This site was reclassified from Oligohaline Spikerush to Fresh Bulltongue due to the abundance of *S. lancifolia* during site characterization on June 15, 2005. Although spikerush was present it was not a dominant or codominant species.

8. Floating Marsh:
Recommended Set-up (Floating or Static): N/A
Mat thickness (ft): N/A Distance from mat surface to firm substrate: N/A
Mat characteristics: N/A

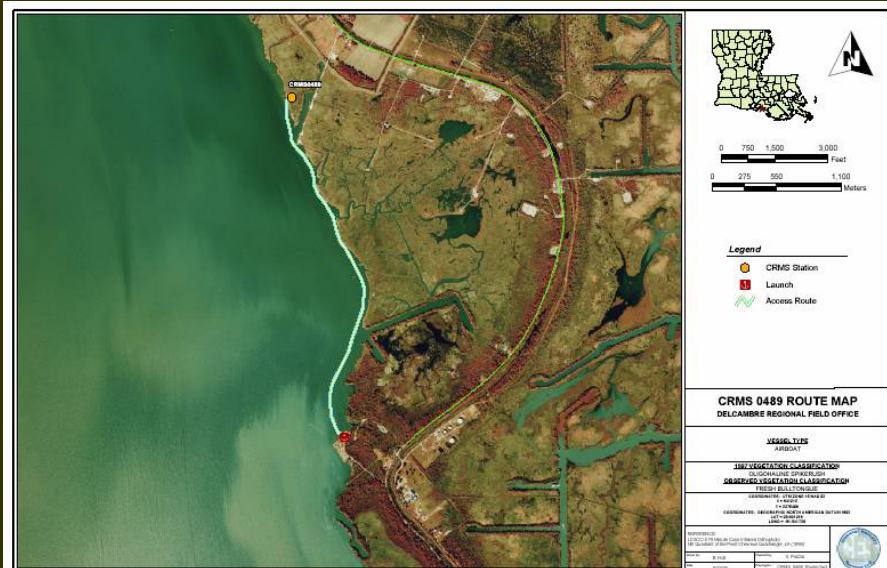
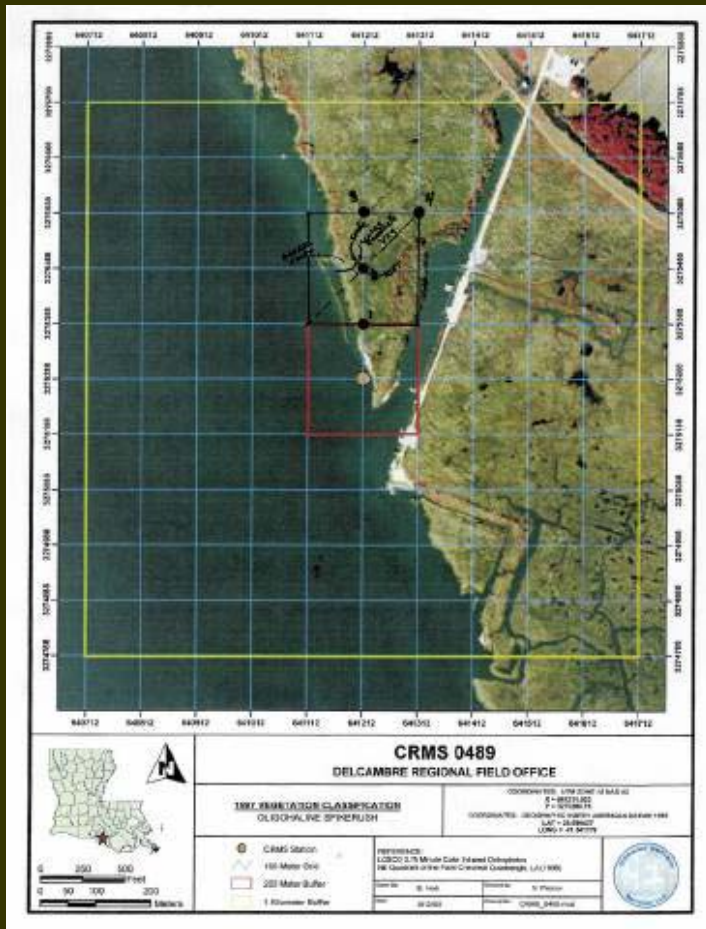
9. Potential Site Problems:
The bay can be quite choppy and the shoreline is receding. Otherwise this site is ideal.
Landowner's property does not extend far NW of bayou, be very careful with land rights.

Site Description: (location and orientation of access route, boardwalk, SET, data sonde, and vegetation transect).

Notes:

CRMS-Wetlands : Implementation

- Site Characterization Report



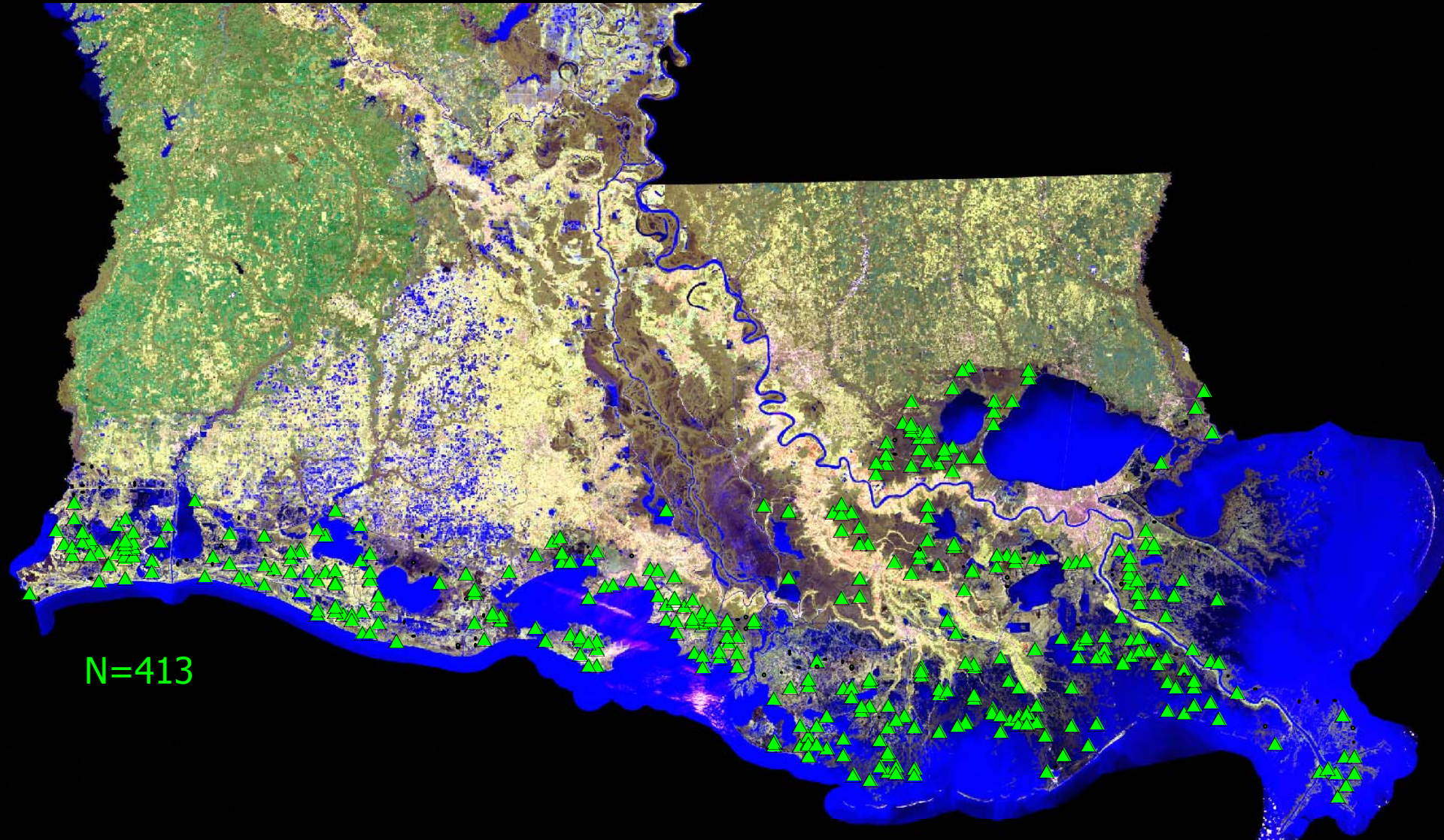
CRMS-Wetlands : Implementation



- Construction of sites began in July 2005
 - Approximately 40 sites constructed

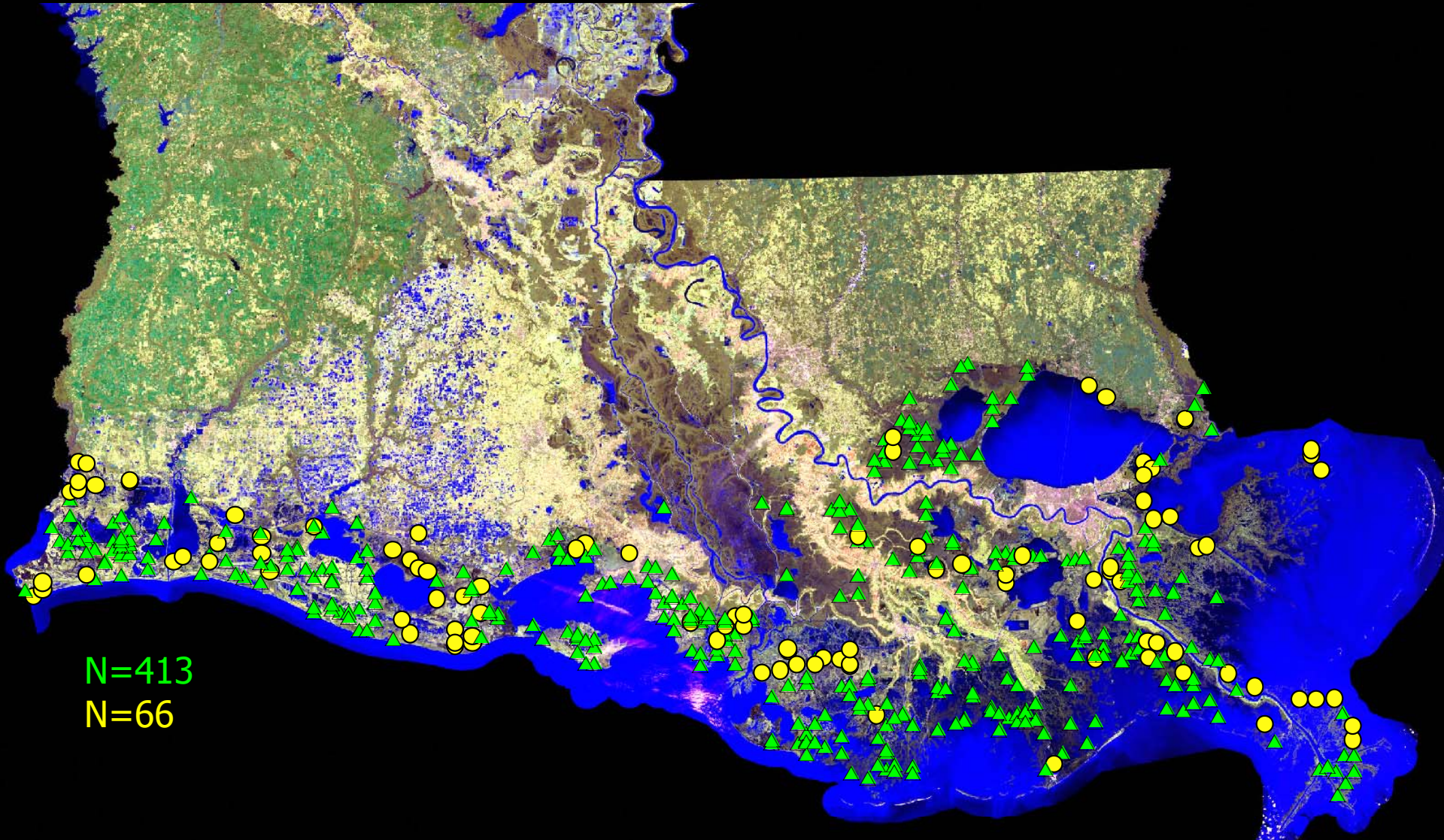
CRMS-*Wetlands*: Projections

Landrights **Secured**

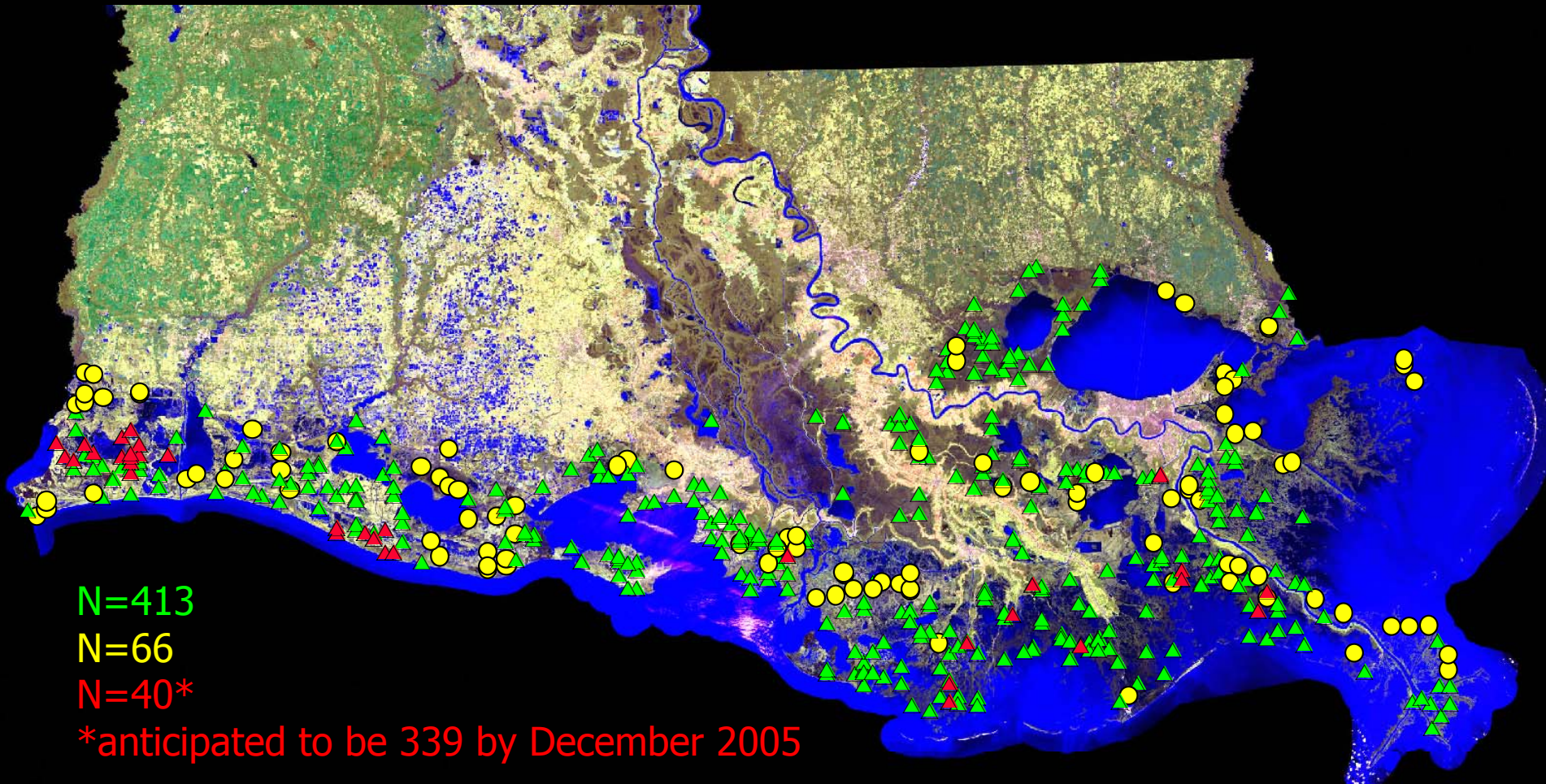


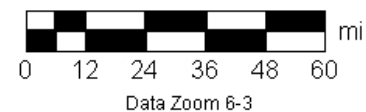
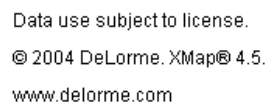
CRMS-*Wetlands*: Projections

Landrights **Secured** and **Projected**



CRMS-*Wetlands*: Projections Landrights Secured, Projected, and Constructed







CRMS-Wetlands: Projections

- **Fall 2005:**

- Collection of coastwide aerial photography and satellite imagery

- **December 2005:**

- Landrights for Year 1 secured

- **March 2006:**

- Construction of all year 1 sites completed

- **April 2006:**

- Data collection for first year anticipated to begin (data will begin sooner if site construction is completed)


DNR Coastal Restoration Monitoring Data - Microsoft Internet Explorer

File Edit View Favorites Tools Help

Back Forward Stop Reload Home Search Favorites Media Print Mail News RSS Feeds

Address <http://www/crm/coastres/monitoring.asp> Go Links

MySearch Google Ask Jeeves Yahoo! LookSmart Customize this toolbar Highlight



DNR > OCRM > Coastal Restoration Division (CRD) Louisiana.gov

CRD

- Home
- Contacts
- Monitoring Data
- Document Search
- GIS Maps

OCRM

- Home
- Physical Addresses
- News Releases
- Coastal Facts
- Careers
- Contacts
- Related Sites
- About OCRM

OCRM Divisions

- Coastal Engineering
- Coastal Management
- Coastal Restoration

Biological Monitoring Data

Hydrographic, surface elevation, and vegetation data collected by the LDNR / CRD Biological Monitoring Section are now available on-line. All downloaded files will be in zipped, comma-delimited format with headers that describe the data. For a detailed explanation of all data types, please review the [Data Descriptions](#) document.

Hydrographic Data

Hydrographic data are now available in two general formats: data collected monthly and data collected hourly. Parameters sampled generally include: water level, water temperature, specific conductance, and salinity. In some rare instances water velocity and wind speed / direction are sampled at stations where hourly data are collected.

Monthly Data

Link: [Retrieve Monthly Data](#) (via SONRIS Lite)

Monthly hydrographic data can be downloaded by either project or station number for any range of dates that data are available. These files are relatively small as there are only approximately 12 records per station per year. In general, there is a much larger spatial distribution of stations where monthly data are collected than where hourly data are collected. The LDNR currently monitors over 400 stations throughout the coastal zone for monthly hydrographic data.

Hourly Data

Link: [Retrieve Hourly Data](#) (via SONRIS Lite)

Hourly hydrographic data may also be downloaded by project or by station number; however these files are much larger than the monthly files. For example, since one year of hourly sampling will yield approximately 8,760 records, a file for a project collecting data at 3 stations for a period of 5 years will contain approximately 131,400 records. Many typical spreadsheet programs will not be able to completely open a file of this size. For this reason, we recommend that hourly data be downloaded by station and not by project. The LDNR currently monitors over 125 stations throughout the coastal zone for hourly

Local intranet



LaCoast

every 35 minutes!

[Home](#)

[News](#)

[Calendar](#)

[Projects](#)

[Education](#)

[WaterMarks](#)

[LaWEC](#)

[Free Stuff](#)

[Maps](#)

[Geography](#)

[Multimedia](#)

[Reports](#)

[CWPPRA](#)

[Search](#)

[Related Links](#)

[Site Index](#)

[Kids' Corner](#)

[Other](#)

[Restoration](#)

[Coast 2050](#)

[Home](#) > [Projects](#)

Coastwide Reference Monitoring System (CRMS) Overview

Priority Project List: *N/A*

Sponsors: [LDNR](#), [USGS](#)

Parishes: Acadia, Ascension, Assumption, Calcasieu, Cameron, East Baton Rouge, Iberia, Iberville, Jefferson, Jefferson Davis, Lafayette, Lafourche, Livingston, Orleans, Plaquemines, St. Bernard, St. Charles, St. James, St. John the Baptist, St. Martin, St. Mary, St. Tammany, Tangipahoa, Terrebonne, Vermilion, West Baton Rouge

Reports:

[Office of Coastal Restoration and Management Quality Management Plan: 2003](#) (PDF 582 KB)

[Biological Monitoring Section Standard Operating Procedures](#) (PDF 2.83 MB)

[A contractor's guide to minimum standards required by the Louisiana Department of Natural Resources, Coastal Restoration Division](#) (PDF 2.45 MB)

[Quality management plan for Coastal Wetlands Planning, Protection, and Restoration Act monitoring program](#) (PDF 1,004 KB)

[A proposed coast-wide reference monitoring system for evaluating wetland restoration trajectories in Louisiana](#) (PDF 4.38 MB)

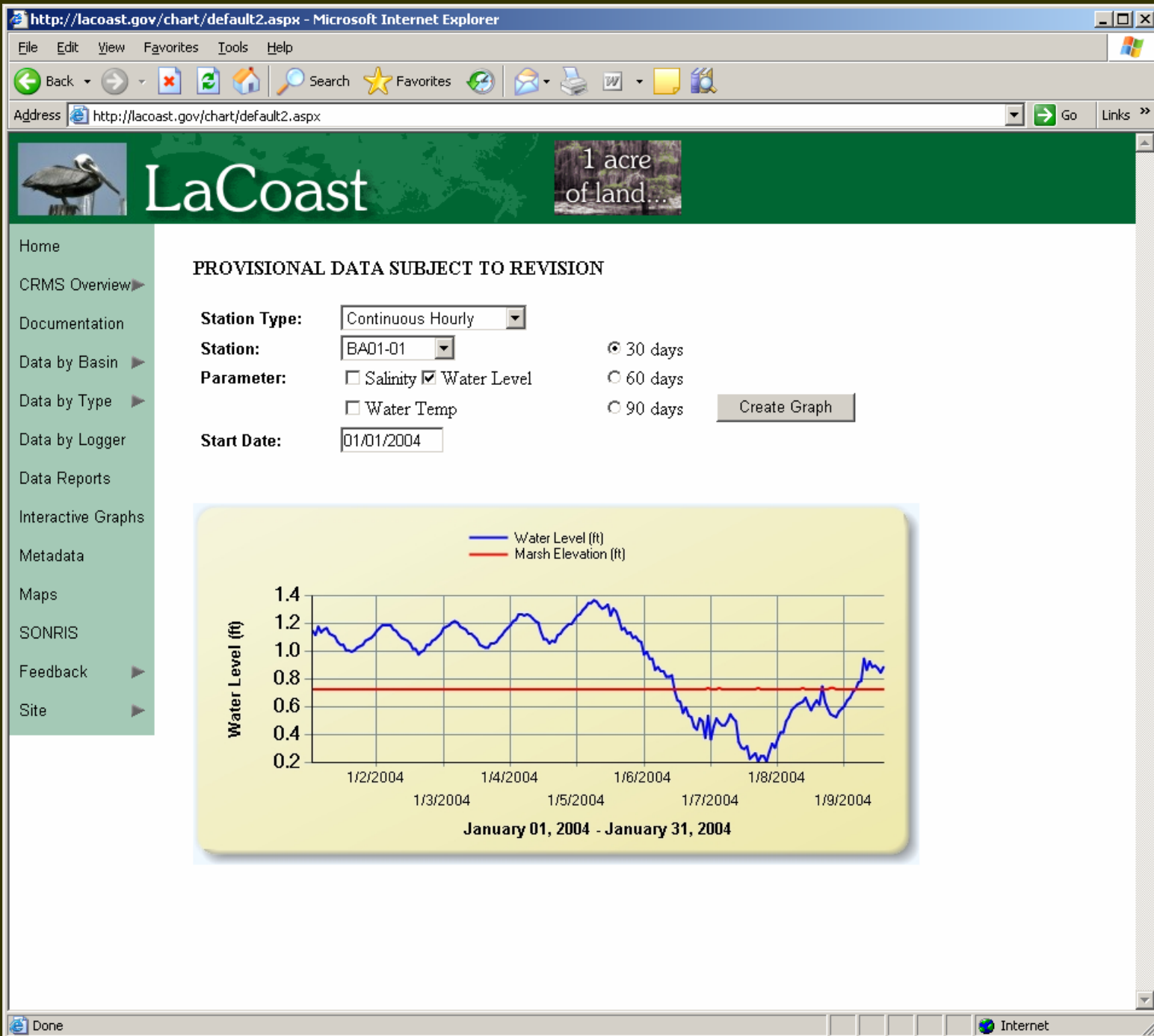
[Task 3 from Request For Proposal - Project Specific Station Location Maps](#) (PDF 4.02 MB)

[SONRIS Database User Manual](#) (PDF 174 KB)

[CRMS Project Managers' Technical Fact Sheet](#) (HTML)

Maps:

No maps available



CRMS-Wetlands: Authorizations and Current Request

AUTHORIZATIONS

• August 14, 2003: (2003-2006) – (PPL 1-8 and new funding)	\$12,397,506
• January 28, 2004: (2007)	\$3,101,357
• <u>October 13, 2004: (2008)</u>	<u>\$532,000</u>
• Total Auth. To Date:	\$16,030,863
• <u>November 2, 2005: (2009)</u>	<u>\$1,036,109</u>
• Total Anticipated Authorization	\$17,066,972

EXPENSES

• Expenses through FY05:	\$532,000
• <u>Expenses in FY06:</u>	<u>\$1,036,109</u>
• Total Expenses To Date	\$1,568,109

PROJECT BALANCE

• Project Balance (available funds):	\$14,462,754
• <u>FY09 Request (based on FY06 Expenses):</u>	<u>\$1,036,109</u>
• Anticipated Balance (pending approval):	\$15,498,863

02 27 2004

FY09 FUNDING REQUEST

CRMS	\$1,036,109
<u>TV-18 Four Mile Cut/Little Vermilion Bay</u>	<u>\$28,903</u>
Total	\$1,065,012



Figure 1: CRMS0434 staff gauge and continuous recorder stations. Notice the vegetation on the electrical box.



Figure 3: CRMS0434 RSET station.



Figure 2: CRMS0434 boardwalk with missing board and warning sign post.



Figure 4: CRMS0375 continuous recorder and staff gauge post. Notice vegetation around the electrical box.



Figure 7: CRMS0374 boardwalk.

**COASTAL
RESTORATION
COASTWIDE
REFERENCE
MONITORING
SYSTEM
ECOLOGICAL
RESEARCH
AREA
PLEASE
DO NOT
DISTURB
OR
ENTER
225-342-7308**

