



East Marsh Island Marsh Creation (TV-21)

Cost figures as of: July 2025

Project Status

Approved Date: 2005 **Project Area:** 362 acres
Approved Funds: \$18 M **Total Est. Cost:** \$18 M
Net Benefit After 20 Years: 169 acres
Status: Completed
Project Type: Marsh Creation
PPL #: 14

Location

The project is located in the Teche/Vermilion Basin at the east end of Marsh Island Wildlife Refuge southeast of Lake Sand in Iberia Parish, Louisiana.

Problems

Substantial areas of interior emergent marsh on Marsh Island have been converted to open water, primarily because of Hurricane Lili (2002). Areas targeted under this project are those with the greatest historical land loss and within close proximity to East Cote Blanche Bay.

Restoration Strategy

This project was designed to re-create and nourish brackish marsh habitat within areas that experienced hurricane damage. The project created 363 acres of marsh and nourished an additional 665 acres. Future loss rates for the interior ponded areas are estimated to be reduced by 50 percent. This project provides a synergistic effect with CWPPRA's Marsh Island Hydrologic Restoration (TV-14), a project constructed in December 2001.



Aerial photo taken on August 1, 2010 during construction, looking Northeast. Provided by the contractor.



Aerial photo of the project taken on December 17, 2012 after construction, looking Northeast. Provided by the Louisiana Department of Wildlife and Fisheries.

Progress to Date

The Louisiana Coastal Wetlands Conservation and Restoration Task Force approved funding for engineering and design at their February 2005 meeting. The U.S. Environmental Protection Agency and the Natural Resources Conservation Service, working through the Louisiana Department of Natural Resources, completed the engineering and design of the project and construction began in March 2010. The project was accepted as substantially complete on November 18, 2010 with an official completion date of December 11, 2010. Vegetative plantings were completed in July 2011.

This project is on Priority Project List 14.

For more information, please contact:



Federal Sponsor:

U.S. Environmental Protection Agency
 Dallas, TX
 (214) 665-7459



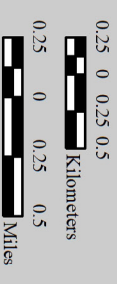
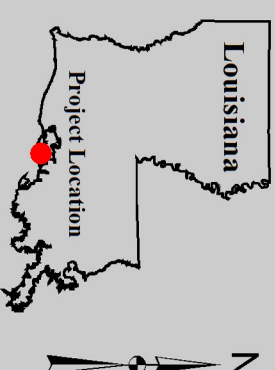
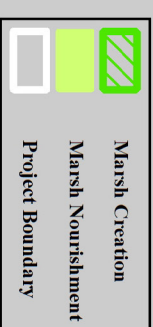
Natural Resources Conservation Service
 Alexandria, LA
 (318) 473-7756



Local Sponsor:

Coastal Protection and Restoration Authority
 Baton Rouge, LA
 (225) 342-4736

East Marsh Island Marsh Creation (TV-21)



Map Produced by:
U.S. Department of the Interior
U.S. Geological Survey
Wetland and Aquatic Research Center
Coastal and Oceanic Restoration Branch
Baton Rouge, La.

Background Imagery:
2016 Digital Orthophoto Quarter Quadrangle

Map Date: October 01, 2018
Map ID: USGS-NWRC 2019-11-0001
Data accurate as of: September 26, 2018

