



Weeks Bay Marsh Creation and Shore Protection/ Commercial Canal Freshwater Redirection (TV-19)

Transferred

Project Status

Approved Date: 2000

Project Area: 0 acres

Approved Funds: \$0.53 M

Total Est. Cost: \$0.53 M

Net Benefit After 20 Years: 278 acres

Status: Transferred

Project Type: Marsh Creation and Shoreline Protection

PPL #: 9

Location

This project is located in Iberia Parish, Louisiana, in the northeastern area of Vermilion and Weeks Bays.

Problems

Shoreline and bank erosion is occurring within this area as a result of heavy wind and wake activity. Openings along the shoreline, along with the dredging of Commercial Canal, have resulted in increased tidal energy and adverse saltwater intrusion into interior wetlands. These openings also prevent the Atchafalaya River's sediment-laden fresh water from reaching marshes within the western portion of the Teche/Vermilion Basin.

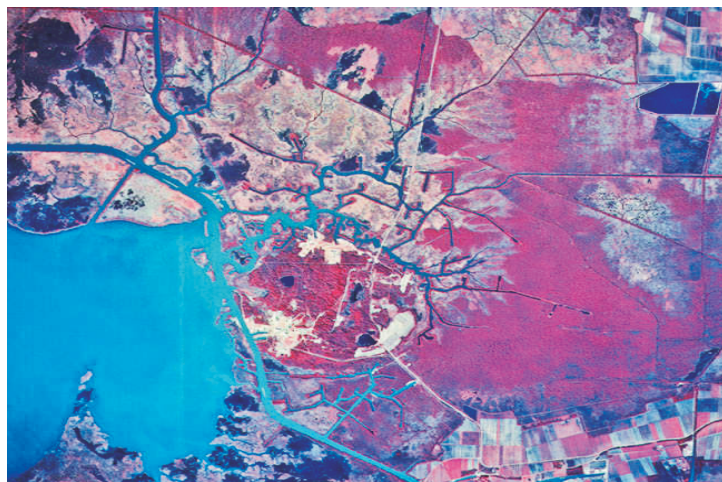
Restoration Strategy

Project components will include constructing retention levees, dedicating placement of dredged material, re-vegetating critical areas along the north shoreline, and armoring shore and bank areas.

Progress to Date

The Louisiana Coastal Wetlands Conservation and Restoration Task Force approved funding for engineering and design. Vibracore soil samples have been taken in the project area to verify foundation conditions. Initial review of these samples confirms that the bearing capacity of the bay bottom is very limited. Hydrographic surveys are currently underway to support hydrologic circulation modeling and design studies.

This project is on Priority Project List 9.



Weeks Island and Commercial Canal, the North-South waterway in upper left corner, are shown on infrared.



Shoreline and bank erosion occurring in Weeks Bay between Mud Point and Weeks Island.

For more information, please contact:




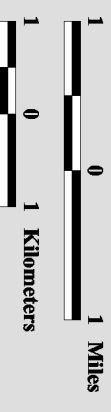
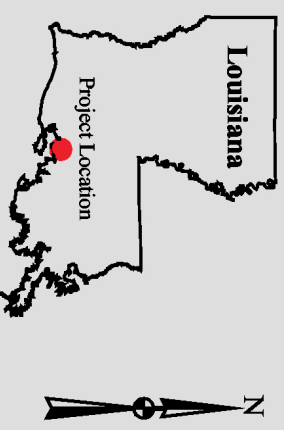
Federal Sponsor:
U.S. Army Corps of Engineers
New Orleans, LA
(504) 862-1597



Local Sponsor:
Coastal Protection and Restoration Authority
Baton Rouge, LA
(225) 342-4736

Weeks Bay Marsh Creation and Shoreline Protection/ Commercial Canal Freshwater Redirection (TV-19)

 Project Boundary



Map Produced By:
U.S. Department of the Interior
U.S. Geological Survey
National Wetlands Research Center
Coastal Restoration Field Station

Background Imagery:
2002 Thematic Mapper Imagery
Map Date: August 25, 2003
Map ID: USGS-NWRP-C2003-11-068
Data accurate as of: March 27, 2003

