



Mandalay Bank Protection Demonstration (TE-41)

Project Status

Approved Date: 2000 **Project Area:** N/A
Approved Funds: \$1.73 M **Total Est. Cost:** \$1.73 M
Net Benefit After 20 Years: N/A
Status: Complete Sept. 2003
Project Type: Demonstration: Shoreline Protection
PPL #: 9

Location

The project is located on the Gulf Intracoastal Waterway (GIWW), just west of Houma, in Terrebonne Parish Louisiana, in the vicinity of Minors Canal. The project features will be installed in the Mandalay National Wildlife Refuge.

Problems

Erosion of canal banks is caused by the wakes of passing vessels on the GIWW. Wake action erodes the spoil banks and exposes the underlying organic soils. Once breakthrough occurs, bay-like areas form in adjacent areas through continued erosion.

Restoration Strategy

This project is intended to develop new techniques for protecting and restoring easily erodable organic soils. Intact banks and breakthroughs will be treated to determine the cost effectiveness of demonstrated approaches.

Progress to Date

The project was approved for engineering and design in January 2000 and construction in October 2001.

Construction was completed September 2003. Monitoring activities have been completed and the project has been closed out.

This project is on Priority Project List 9.



Breach along the southern bank of the GIWW in Mandalay NWR.



The project is located within the boundaries of Mandalay National Wildlife Refuge.

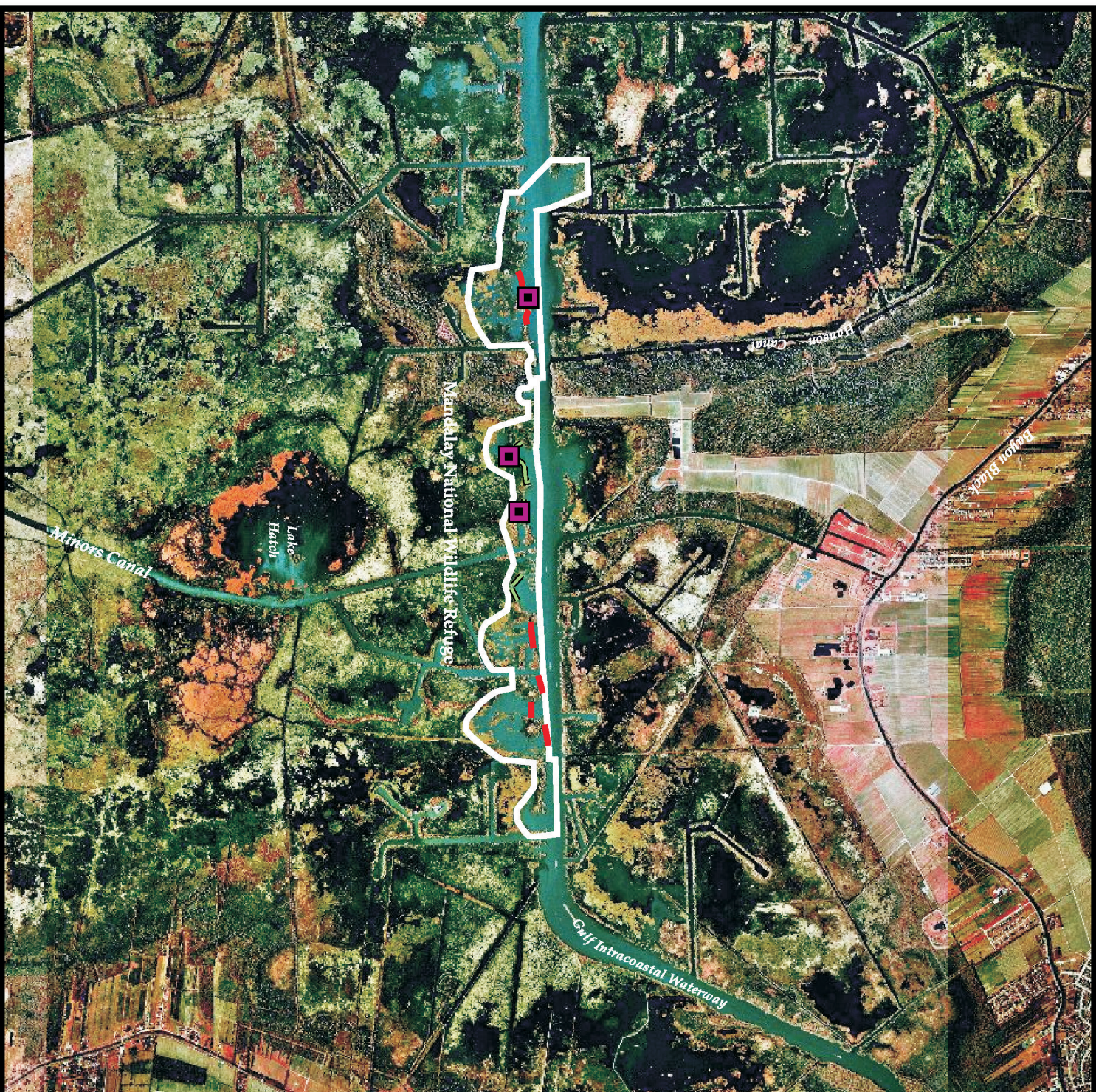
For more information, please contact:







Federal Sponsor:
U.S. Fish and Wildlife Service
Lafayette, LA
(337) 291-3100

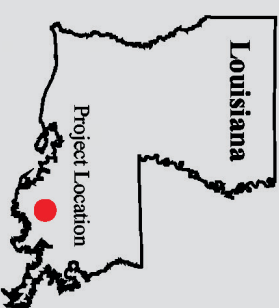


Local Sponsor:
Coastal Protection and Restoration Authority
Baton Rouge, LA
(225) 342-4736



Mandalay Bank Protection Demonstration (TE-41)

-  Plugs*
-  Shoreline Protection*
-  Vegetative Plantings*
-  Project Boundary
- * denotes proposed features



Map Produced By:
U.S. Department of the Interior
U.S. Geological Survey
National Wetlands Research Center
Coastal Restoration Field Station

Background Imagery:
1998 Digital Orthophoto Quarter Quadrangle

Map Date: August 25, 2003
Map ID: 2002-11-546
Data accurate as of: March 11, 2003