



Bayou Cane Marsh Creation (PO-181)

Project Status

Approved Date: 2018 **Project Area:** 635 acres
Approved Funds: \$40 M **Total Est. Cost:** \$41 M
Net Benefit After 20 Years: 557 acres
Status: Construction
Project Type: Marsh Creation
PPL #: 27

Location

This project is located in Region 1, Upper Pontchartrain Basin, St. Tammany Parish, between Mandeville and Lacombe. The majority of the project is located on property owned by either the State of Louisiana (Fontainebleau State Park) or the Big Branch National Wildlife Refuge.

Problems

In 2005, the marshes in the North Shore Mapping Unit sustained severe damage due to Hurricane Katrina. Hundreds of acres of emergent marsh within this mapping unit were lost, resulting in hundreds of acres of shallow open water and scour ponds averaging about 2 ft deep. The presence of these large and relatively deep open water areas near the lakeshore may make the lakeshore vulnerable to scour during future storm events such that the lake could breach into those ponds. The USGS land change rate (1984 to 2021) is -0.45% per year for the extended boundary area. This equates to an average loss of 9.53 acres per year.

In the period since Phase I approval (2018), a breach has formed in the shoreline at MCA-1, creating a direct connection between the fresher interior marshes and higher salinity waters of Lake Pontchartrain. This breaching could result in the conversion of interior marsh and open water areas that provide high quality wildlife habitat and fisheries nursery habitat, to less valuable lake or open water habitats.



View of project area.

Restoration Strategy

The primary goal of the project is to restore marsh habitat across six miles along the north shore of Lake Pontchartrain and to work synergistically with projects to the east by creating continuity with the Goose Point Marsh Creation (PO-33) and Bayou Bonfouca Marsh Creation (PO-104) projects. The specific goal of this project is to hydraulically dredge and pump sediment from Lake Pontchartrain to create 580 acres of marsh and nourish an additional 55 acres of marsh.

Progress to Date

This project was approved for Phase I Engineering and Design in January 2018. This project was approved for Phase II in January 2023. Construction is anticipated to begin in Summer 2025.

This project is on Priority Project List (PPL) 27.

For more information, please contact:





Federal Sponsor:
U.S. Fish and Wildlife Service
Lafayette, LA
(337) 291-3100



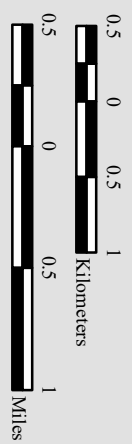
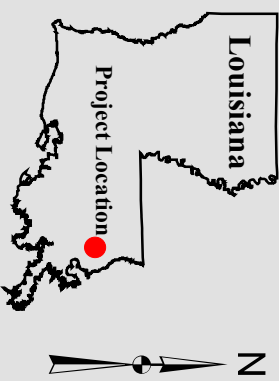
Local Sponsor:
Coastal Protection and Restoration Authority
Baton Rouge, LA
(225) 342-4733

Bayou Cane Marsh Creation (PO-181)

 Marsh Creation *

 Project Boundary

*denotes proposed features



Map Produced by:
U.S. Department of the Interior
U.S. Geological Survey
Wetland and Aquatic Research Center
Baton Rouge, La.

Background Imagery:
2021 NAIP

Map Date: June 30, 2022
Map ID: USGS-NWRC 2022-11-0017
Data accurate as of: June 30, 2022

