



Venice Ponds Marsh Creation and Crevasses (MR-15)

Inactive

Project Status

Approved Date: 2006 **Project Area:** 917 acres
Approved Funds: \$0.61 M **Total Est. Cost:** \$0.61 M
Net Benefit After 20 Years: 318 acres
Status: Engineering and Design
Project Type: Marsh Creation and Crevasse Creation
PPL #: 15

Location

The project area is located in the CWPPRA Mississippi River Delta Basin in Plaquemines Parish south of Venice, Louisiana, adjacent to Tiger and Grand Pass.

Problems

Between 1932 and 1974, the mapping unit lost 38,400 of 59,640 acres of marsh as a result of subsidence, tropical storm activity, canal creation and maintenance, and hydrologic modification. Between 1974 and 1990, another 13,260 acres of land was lost. It is estimated that without restoration efforts, more than 91 percent of the remaining land will be lost by the year 2050.



Dredged material will be pumped into the open-water area in the center of the photograph, as well as two other areas seen in the background. Part of the town of Venice, Louisiana, is visible between the marsh creation areas. This picture was taken prior to Hurricane Katrina, which caused extensive damage.

Restoration Strategy

The project will create marsh in open water areas that were nearly solid wetlands in 1956 by depositing material acquired through dedicated dredging and by constructing crevasses. It is anticipated that approximately 190 acres of marsh will be created by hydraulically dredging material from Grand Pass. The dredged material will be pumped into two fill areas surrounded by containment dikes along the existing marsh boundaries. Containment dikes will be gapped 50 feet wide every 500 feet. Four crevasses will be constructed to convey the sediment-laden waters of Grand and Tiger Passes into the benefitted areas. One crevasse will be created and two existing crevasses off of Tiger Pass will be enhanced through deepening in order to promote deltaic splay growth and nourishment of existing marsh. Another crevasse will be constructed off of Grand Pass to promote deltaic splay growth and introduce sediment laden water into the marsh creation areas.

Progress to Date

The Louisiana Coastal Wetlands Conservation and Restoration Task Force approved funding for engineering and design in February 2006. The project team completed final design in November of 2011 and the project is awaiting construction funding.

This project is on Priority Project List 15.

For more project information, please contact:



Federal Sponsor:

U.S. Environmental Protection Agency
 Dallas, TX
 (214) 665-6722



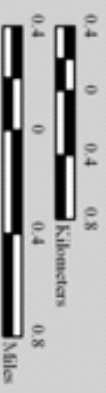
Local Sponsor:

Coastal Protection and Restoration Authority
 Baton Rouge, LA
 (225) 342-4736

Venice Ponds Marsh Creation and Crevasses (MR-15)

- Crevasse *
- Marsh Creation *
- Project Boundary
- *denotes proposed features

USGS
science for a changing world



Map Produced by:
U.S. Department of the Interior
U.S. Geological Survey
National Wetlands Research Center
Coastal Restoration Assessment Branch
Baton Rouge, La.

Background Imagery:
2010 NALP Photography

Map Date: September 23, 2011
Map ID: USGS-NWRC 2011-11-0066
Data accurate as of: September 22, 2011

