



Spanish Pass Diversion (MR-14)

De-authorized

Project Status

Approved Date: 2004 **Project Area:** 1,580 acres
Approved Funds: \$0 M **Total Est. Cost:** \$0 M
Net Benefit After 20 Years: 433 acres
Status: De-authorized
Project Type: Water Diversion
PPL #: 13

Location

The project is located south of The Jump on Grand Pass near Venice in Plaquemines Parish, Louisiana.

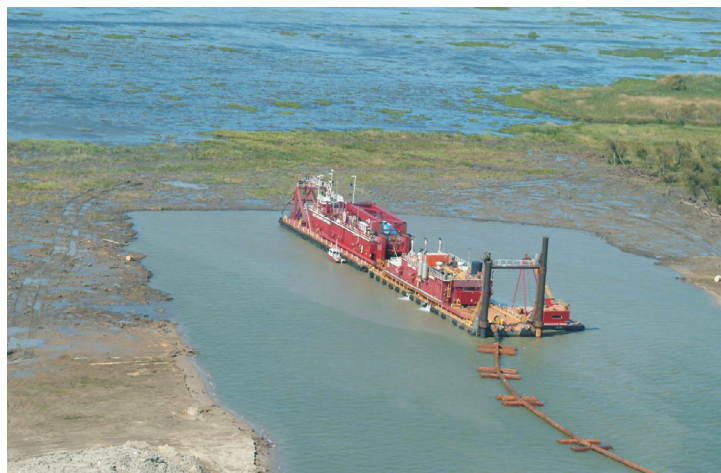
Problems

Marsh in the project area is not receiving sediment and is converting to open water. The principal hydrologic changes in the area are caused by the dredging of canals for the Venice Oil Field, roads, and other infrastructures. These changes have caused Spanish and Red Passes to be cut off from the influence of the Mississippi River, thus starving the area of fresh water, sediments, and nutrients. These processes have resulted in the loss of more than 3,900 acres of fresh marsh and swamp.

Restoration Strategy

The primary goal of this project is to gain emergent marsh to the maximum extent possible by diverting river water and sediments into an otherwise open water environment.

The project involves constructing a diversion channel capable of diverting 7,000 cubic feet of water per second from Grand Pass (a distributary of the Mississippi River) into the large open-water receiving area shown on the project map. The construction of the 1,300-linear-foot diversion channel and its containment levees will necessitate placement of a bridge at Tidewater Road, which is included in the project's budget. Outfall management measures will be evaluated and incorporated to increase benefits to aquatic habitats in the system.



The construction of a diversion channel for a similar project, West Bay Sediment Diversion (MR-03), is shown above.

Progress to Date

The Louisiana Coastal Wetlands Conservation and Restoration Task Force approved engineering and design funding at their January 2004 meeting. The project delivery team has been assembled, and a kickoff meeting and site visit was held in March 2004. The work plan was submitted to the CWPPRA Planning and Evaluation Subcommittee in April 2004. The project delivery team is in the process of obtaining right of entry to collect survey and water elevation data.

This project is on Priority Project List 13.

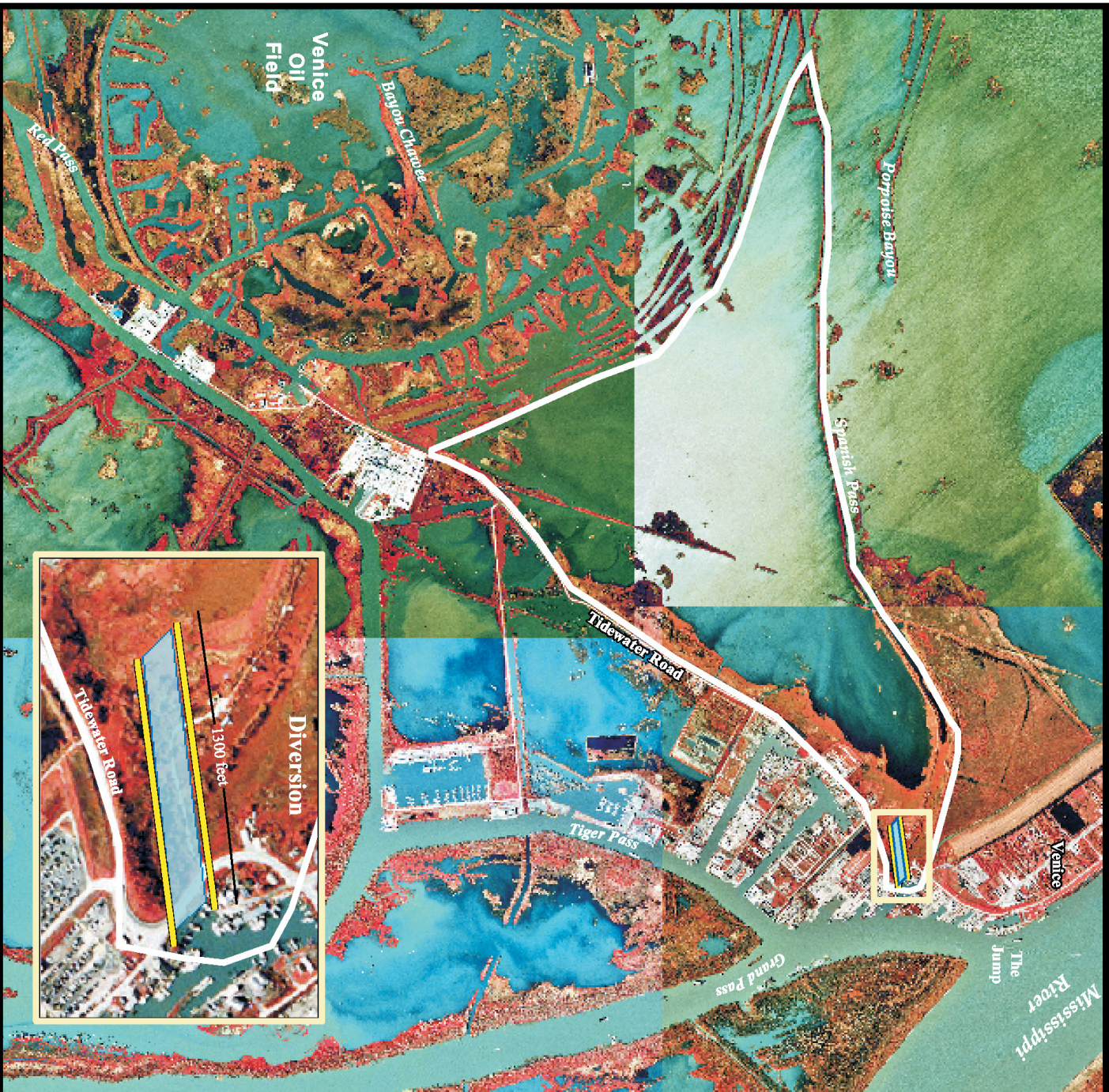
For more information, please contact:



Federal Sponsor:
 U.S. Army Corps of Engineers
 New Orleans, LA
 (504) 862-1597



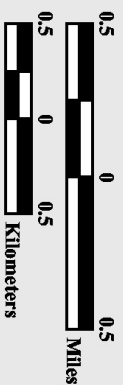
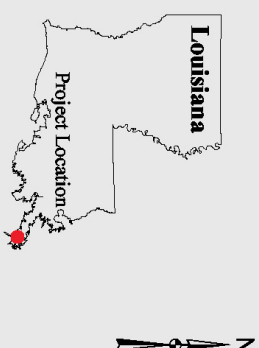
Local Sponsor:
 Coastal Protection and Restoration Authority
 Baton Rouge, LA
 (225) 342-4736



Spanish Pass Diversion (MR-14)

-  **Containment Levee***
-  **Diversion Channel***
-  **Project Boundary**

*denotes proposed features



Map Produced By:
 U.S. Department of the Interior
 U.S. Geological Survey
 National Wetlands Research Center
 Coastal Restoration Field Station
 Background Imagery:
 1998 Digital Orthophoto Quarter Quadrangle
 Map Date: January 30, 2004
 Map ID: USGS-NWRC 2004-11-0138
 Data accurate as of: July 20, 2004