



Grand Lake Shoreline Protection (ME-21)

Project Status

Approved Date: 2002 **Project Area:** 77 acres
Approved Funds: \$5.14 M **Total Est. Cost:** \$8.06 M
Net Benefit After 20 Years: 45 acres
Status: Completed
Project Type: Shoreline Protection
PPL #: 11

Location

The project is located in the Mermentau Basin in Cameron Parish, Louisiana, on the south shore of Grand Lake.

Problems

A comparison of 1978-79 aerial photography to 1997-98 aerial photography indicates that shoreline erosion rates in this area vary from 11 to 32 feet per year.

Restoration Strategy

The project's objectives include stopping shoreline erosion from Superior Canal to Tebo Point and promoting accretion between the breakwater and the shore.

Approximately 43,500 feet of stone breakwater was built in 2 to 3 feet of water in Grand Lake roughly 200 to 400 feet from the shoreline from Superior Canal to Tebo Point. The breakwater rises about 2 feet above normal water level. Fish dips, gaps that allow fish to move across the breakwater barrier, were incorporated into the design. The fish dips extend to the lake bottom and are lined with rock to prevent erosion. Material from the flotation / access channel was placed inside the breakwater to create additional land. Minimal maintenance of the breakwater is expected.

Progress to Date

Approximately 38,700 feet of this project was constructed by the state utilizing CIAP funds. The remainder of the project, approximately 5,700 feet, was completed under the CWPPRA program. Project construction was completed in July 2017.

This project is on Priority Project List 11.



Construction of the project's stone breakwater.

For more information, please contact:





Federal Sponsor:
 Natural Resources Conservation Service
 Alexandria, LA
 (318) 473-775




Local Sponsor:
 Coastal Protection and Restoration Authority
 Baton Rouge, LA
 (225) 342-4736

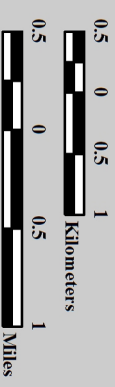
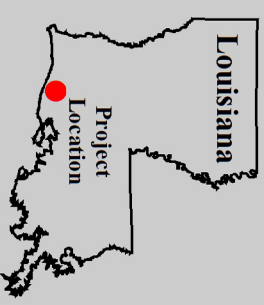
Grand Lake Shoreline Protection (ME-21)

 Shoreline Protection *

 Shoreline Protection (ME-21 (EB))

 Project Boundary

*denotes proposed features



Map Produced by:
U.S. Department of the Interior
U.S. Geological Survey
National Wetlands Research Center
Coastal Restoration Assessment Branch
Baton Rouge, La.

Background Imagery:
2010 Digital Orthophoto Quarter Quadrangle
Map Date: November 09, 2012
Map ID: USGS-NWRC 2012-11-0005
Data accurate as of: August 27, 2012