



South Grand Chenier Marsh Creation (ME-20)

Project Status

Approved Date: 2002 **Project Area:** 453 acres
Approved Funds: \$23 M **Total Est. Cost:** \$24 M
Net Benefit After 20 Years: 414 acres
Status: Construction
Project Type: Marsh Creation
PPL #: 11

Location

The project is located south of Grand Chenier in Cameron Parish, Louisiana, between Louisiana Highway 82, Hog Bayou, and east of Second Lake.

Problems

The major problem in the Hog Bayou Unit is land loss caused by failed agricultural impoundments and pump-offs. Other problems include saltwater intrusion from the Mermentau Ship Channel and a Gulf shoreline erosion rate of 40 feet per year. Over a period of 60 years, 9,230 acres (38% of the original marsh) was lost from the Hog Bayou Watershed, with the greatest amount of land lost between 1956 and 1974.

The major contributors to land loss in the Watershed are subsidence, compaction, and the oxidization of marsh soils in the former pump-offs and leveed agricultural areas between Hog Bayou and Highway 82. Large areas of marsh south of Highway 82 were “force drained” during the 1960s, 1970s, and 1980s. Many of these same areas now consist of open water with very little wetland vegetation. One of the largest areas of current loss is in and north of the project area.

Restoration Strategy

The project’s goal is to create 430 acres and nourish 23 acres of emergent brackish and intermediate marsh.

The project goal will be achieved by using dredged material from the Gulf to create two marsh creation cells (176 acres and 277 acres) in the project area east and west of Second Lake.



White Pelicans flying over the Western Marsh Creation area.

Progress to Date

This project was selected for Phase I (engineering and design) funding at the January 2002 Task Force meeting. It is included as part of Priority Project List 11. Engineering and design is complete. Construction funding will be requested in 2013.

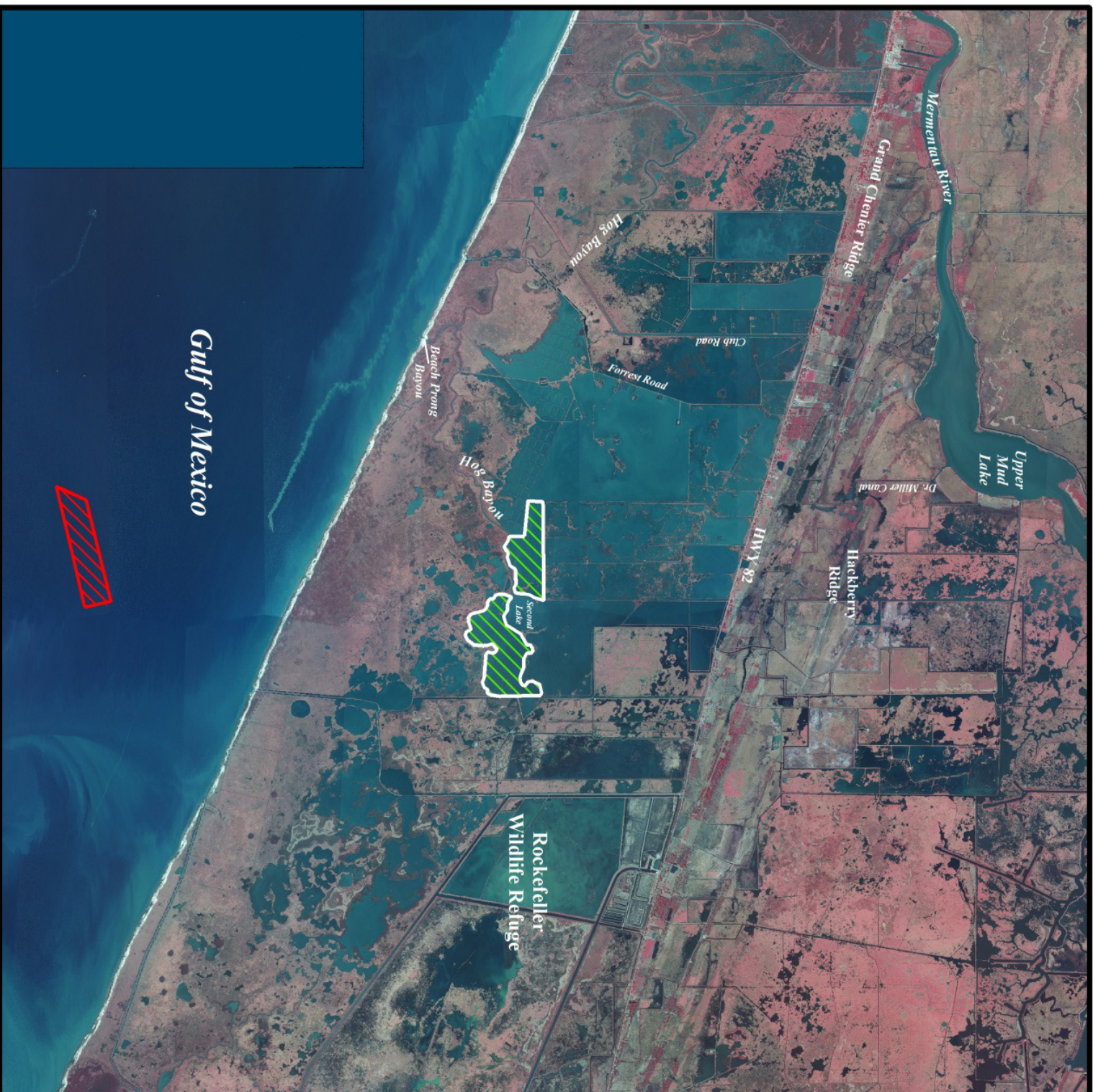
For more information, please contact:



Federal Sponsor:
U.S. Fish and Wildlife Service
Lafayette, LA
(337) 291-3100



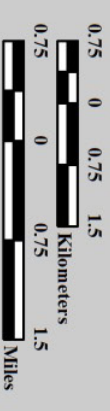
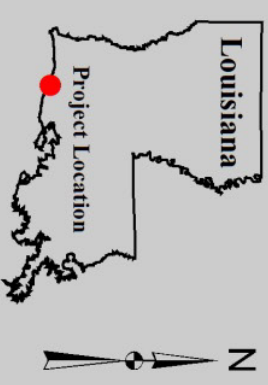
Local Sponsor:
Coastal Protection and Restoration Authority
Baton Rouge, LA
(225) 342-4736



South Grand Chenier Marsh Creation (ME-20)

-  Marsh Creation *
-  Borrow Site *
-  Project Boundary
- *denotes proposed features

USGS
science for a changing world



Map Produced by:
U.S. Department of the Interior
U.S. Geological Survey
National Wetlands Research Center
Coastal Restoration Assessment Branch
Baton Rouge, La.

Background Imagery:
2008 Digital Orthophoto Quarter Quadrangle
Map Date: October 22, 2012
Map ID: USGS-NWRC 2013-11-0003
Data accurate as of: August 27, 2012