



Coastwide Vegetative Planting (LA-39)

Project Status

Approved Date: 2011 **Project Area:** 4,903 acres
Approved Funds: \$13 M **Total Est. Cost:** \$13 M
Net Benefit After 20 Years: 779 acres

Status: Operation and Maintenance

Project Type: Vegetative Planting

PPL #: 20

Location

The project features are located in the coastal zone of Louisiana.

Problems

The coastal restoration community has long recognized the benefits of vegetative plantings in restoration. Many marsh creation and most terracing projects require plantings to insure success. Coastal shoreline plantings have also proven to be very effective and some have demonstrated the ability to not only stop shoreline erosion but to facilitate accretion, the process of increasing sediments. Recent hurricane events have exposed a need to have a mechanism in place where large-scale planting efforts can be deployed in a timely manner to specifically targeted areas of need, anywhere along the coast.

Although the CWPPRA program can fund specific large-scale planting projects, the normal program cycle for individual projects can delay needed restoration plantings for a number of years.

Restoration Strategy

The goals of this project are to facilitate a consistent and responsive planting effort in coastal Louisiana that is flexible enough to routinely plant on a large scale and be able to rapidly respond to critical areas of need following storm or other damaging events. This project set up an advisory panel consisting of representatives from various state and federal agencies who would assist in the selection of projects for funding. The project also set up a mechanism by which project nominations would be submitted for consideration.

The equivalent of 90 acres of interior marsh and 40,000 linear feet of coastal shoreline will be planted per year over a 10 year period to effectively create/protect a total of 779 net acres of marsh over the 20-year project life.

Progress to Date

This project is on Priority Project List 20. Three sites have been planted with Year One funding, and three sites are scheduled to be planted in 2014 with Year Two funding.



Recently planted vegetation at the LA-39 project site at Marsh Island.



An example of vegetative plantings in interior marsh areas.

For more information, please contact:



Federal Sponsor:

Natural Resources Conservation Service
 Alexandria, LA
 (318) 473-7756



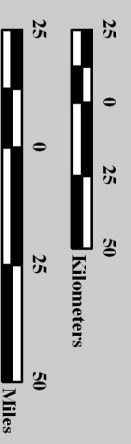
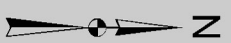
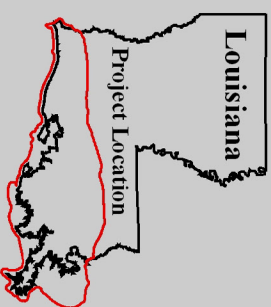
Local Sponsor:

Coastal Protection and Restoration Authority
 Baton Rouge, LA
 (225) 342-4733

Coastwide Vegetative Planting (LA-39)



Project Boundary



Map Produced by:
U.S. Department of the Interior
U.S. Geological Survey
National Wetlands Research Center
Coastal Restoration Field Station
Baton Rouge, La.

Background Imagery:
2009 Landsat Thematic Mapper 5 Mosaic
Map Date: February 8, 2011
Map ID: USGS-NWPRC 2011-11-0016
Data accurate as of: January 3, 2011