



# Louisiana *Salvinia* Weevil Propagation Facility (LA-284)

## Project Status

**Approved Date:** 2017      **Project Area:** 33,262 acres  
**Approved Funds:** \$0.93 M      **Total Est. Cost:** \$3.80 M  
**Net Benefit After 20 Years:** 26 acres  
**Status:** Engineering and Design  
**Project Type:** Invasives Control  
**PPL #:** 26

## Location

Coastwide

## Problems

The invasive plant, giant *Salvinia*, was first observed in Chenier Plain marshes in 2009. Since then it has spread throughout most of the Louisiana Chenier Plain marshes. This plant can stack up above the water surface to as much as 6 to 12 inches. Under such conditions, oxygen exchange is greatly reduced, and decay of shaded *Salvinia* can easily cause anoxic conditions in affected areas. As a result, habitat quality of badly infested areas is severely degraded, and may affect many species typical of fresh marshes, including many species of management concern (alligator snapping turtle, mottled duck [including critical brood rearing habitat], wintering migratory waterfowl, black rail, king rail, little blue heron, whooping crane, and peregrine falcon).

## Restoration Strategy

LSU Ag. Center has a pond in Jeanerette which is capable of producing weevil-infested *Salvinia*, but LSU does not have funding to operate a weevil production facility there. Costs associated with this project consist primarily of supplies and one part-time position to operate the pond, coordinate public weevil harvests, keep records of release locations, monitor *Salvinia* problem areas, assist landowners in conducting weevil releases, relay infested *Salvinia* to new locations, and conduct public outreach to promote the program.

## Progress to Date

This project was approved for Phase I, Phase II, and Operation in January 2017.

This project is on Priority Project List (PPL) 26.



For more information, please contact:



**Federal Sponsor:**  
 U.S. Fish and Wildlife Service  
 Lafayette, LA  
 (337) 291-3100



**Local Sponsor:**  
 Coastal Protection and Restoration Authority  
 Baton Rouge, LA  
 (225) 342-4733

# Coastwide Salvinia Weevil Propagation (LA-284)

★ LSU AgCenter  
Jeanerette Facility

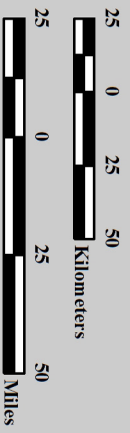
□ Project Boundary



Louisiana

Project Location

North arrow



Map Produced by:  
U.S. Department of the Interior  
U.S. Geological Survey  
Wetland and Aquatic Research Center  
Coastal Restoration Assessment Branch  
Baton Rouge, La.

Background Imagery:  
2009 Landsat Thematic Mapper 5 Mosaic

Map Date: January 13, 2017  
Map ID: USGS-NWRC 2017-11-0008  
Data accurate as of: January 29, 2017

