



Cameron Meadows Marsh Creation and Terracing (CS-66)

Project Status

Approved Date: 2013 **Project Area:** 499 acres
Approved Funds: \$38 M **Total Est. Cost:** \$39 M
Net Benefit After 20 Years: 292 acres
Status: Construction
Project Type: Marsh Creation & Terracing
PPL #: 22

Location

Region 4, Calcasieu/Sabine Basin, Cameron Parish, approximately five miles northeast of Johnson Bayou and five miles north of the Gulf of Mexico.

Problems

Significant marsh loss in the Cameron Meadows area is attributed to rapid fluid and gas extraction beginning in 1931, as well as Hurricanes Rita and Ike. Rapid fluid and gas extraction resulted in a surface down warping along distinguished geologic fault lines. During the hurricanes of 2005 and 2008, the physical removal of the marsh coupled with subsequent low rainfall has resulted in the conversion of intermediate to brackish marsh to approximately 7,000 acres of open water. In addition to these losses, significant marsh loss has resulted from saltwater intrusion and hydrologic changes associated with storm damages.

Restoration Strategy

The goal of the project is to restore approximately 400 acres of coastal marsh habitat and reduce the fetch by constructing approximately 12,150 linear feet of earthen terraces.

Sediment will be hydraulically dredged from the Gulf of Mexico and pumped via pipeline to create approximately 380 acres of marsh (295 acres confined disposal and 85 acres unconfined disposal). Funds are included to plant approximately 180 acres. Approximately 12,150 linear feet of earthen terraces will be constructed in a sinusoidal layout to reduce fetch and wind-generated wave erosion. Terraces will be constructed to +3.0 feet NAVD88, 15 feet crown width, and planted. Terrace acreage will result in four acres of marsh above Mean Low Water.



View of project receiving area; perspective taken from open water towards marsh edge.

Progress to Date

This project was approved on Priority Project List 22. The 30% Design Review meeting was completed in July 2015 and the 95% Design Review meeting was completed in October 2016. In January 2017, this project was approved for construction.

For more information, please contact:




Federal Sponsor:
National Marine Fisheries Service
Baton Rouge, LA
(225) 389-0508

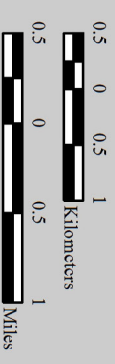


Local Sponsor:
Coastal Protection and Restoration Authority
Baton Rouge, LA
(225) 342-4733

Cameron Meadows Marsh Creation and Terracing (CS-66)

	Terrace Field *
	Confined Disposal Marsh Creation & Nourishment *
	Unconfined Disposal Marsh Creation & Nourishment *
	Project Boundary

* denotes proposed features



Map Produced by:
U.S. Department of the Interior
U.S. Geological Survey
Wetland and Aquatic Research Center
Coastal Restoration Assessment Branch
Baton Rouge, La.

Background Imagery:
2012 DOQQ Photography

Map Date: September 29, 2016
Map ID: USGS-NWRC 2016-11-0040
Data accurate as of: September 27, 2016

