



Cameron-Creole Freshwater Introduction (CS-49)

Project Status

Approved Date: 2009 **Project Area:** 22,510 acres
Approved Funds: \$23 M **Total Est. Cost:** \$27 M
Net Benefit After 20 Years: 218 acres
Status: Construction Completed
Project Type: Freshwater Diversion
PPL #: 18

Location

The project area is located on the east side of Calcasieu Lake and west of Gibbstown Bridge and Highway 27.

Problems

Virtually all of the project area marshes have experienced increased tidal exchange, saltwater intrusion, and reduced freshwater retention resulting from hydrologic changes associated with the Calcasieu Ship Channel and the GIWW. In addition, thousands of acres of marsh were damaged by Hurricane Rita and again, more recently, by Hurricane Ike. Because of man-made alterations to the hydrology, it is unlikely that those marshes will recover without comprehensive restoration efforts. The Cameron-Creole Watershed Project has successfully reduced salinities and increased marsh productivity. However, the area remains disconnected from freshwater, sediments, and nutrients available from the GIWW.



Hurricane damaged marsh in the project area to be benefitted by the proposed features.

Restoration Strategy

The freshwater introduction project would restore the function, value, and sustainability to approximately 22,510 acres of marsh and open water by improving hydrologic conditions via freshwater input and increasing organic productivity.

Progress to Date

The project was approved for Phase II (construction) funding in December 2017. The contractor began construction in November 2019 and the construction was completed on September 22, 2021. The planting portion of the project was completed in July 2016.

This project is on Priority Project List 18.

For more information, please contact:



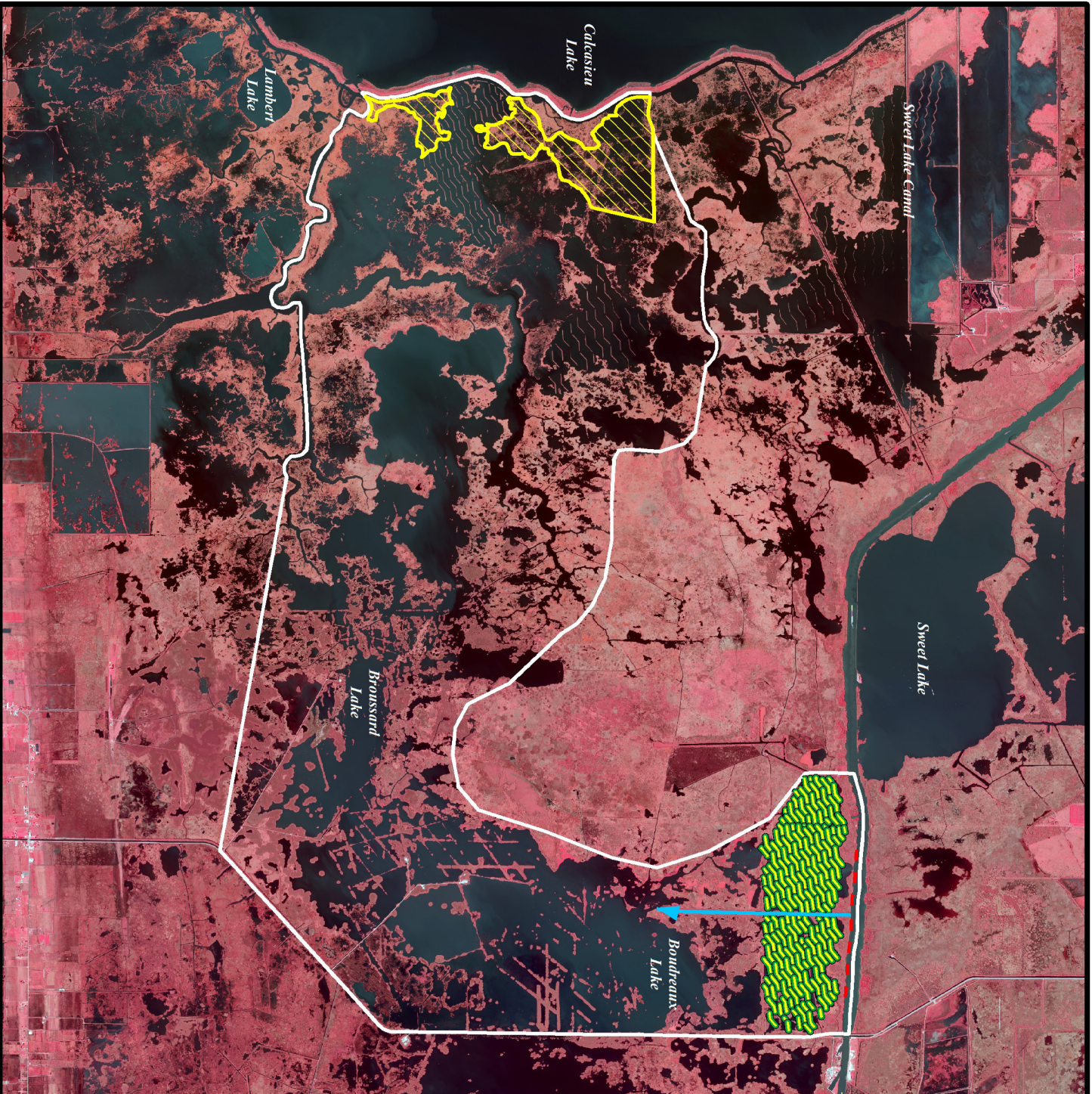
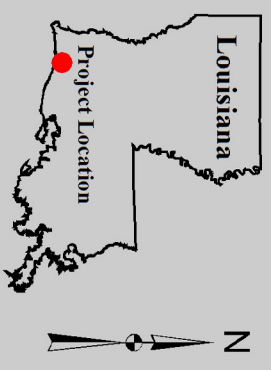
Federal Sponsor:
 Natural Resources Conservation Service
 Alexandria, LA
 (318) 473-7756



Local Sponsor:
 Coastal Protection and Restoration Authority
 Baton Rouge, LA
 (225) 342-4733

Cameron-Creole Freshwater Introduction (CS-49)

-  Shoreline Protection *
-  Freshwater Introduction *
-  Terraces *
-  Vegetative Planting Area *
-  Project Boundary
- * denotes proposed features



Map Produced by:
 U.S. Department of the Interior
 U.S. Geological Survey
 Wetland and Aquatic Research Center
 Coastal and Ocean Restoration Branch
 Baton Rouge, La.

Background Imagery:
 2015 Digital Orthophoto Quarter Quadrangle

Map Date: October 30, 2017
 Map ID: USGS-NWRC_2015-11-0001
 Data accurate as of: March 10, 2017