



Bohemia Mississippi River Reintroduction (BS-15)

De-authorized

Project Status

Approved Date: 2007 **Project Area:** 5,210 acres
Approved Funds: \$1 M **Total Est. Cost:**
Net Benefit After 20 Years: 637 acres
Status: Engineering and Design
Project Type: Freshwater Diversion
PPL #: 17

Location

The project is located in the Breton Sound basin in Plaquemines Parish along the east bank of the Mississippi River approximately eight to nine miles southeast of Pointe a la Hache, Louisiana, just northeast of, and across the river from, Port Sulfur.

Problems

The proposed project area is characterized by very low wetland loss rates, which may be attributed to the land-building effects of the existing, nearby Bohemia diversion and the seasonal flooding of the Mississippi River, among other things. The proposed project is designed to help offset wetland losses elsewhere in the State by enhancing deltaic growth in the area characterized by lower wetland loss rates.



Existing marsh adjacent to Nestor Canal.

Restoration Strategy

The project will restore natural delta-building capacity by re-introducing Mississippi River water and sediments into shallow, open water and existing wetlands. This will be achieved through the construction of a diversion with a capacity of approximately 10,000 cubic feet per second. Dredged material from channel improvements will be used to fill in existing oil and gas canals to create an estimated 14 acres of marsh. Three acres of trees will be planted on new spoil banks of the improved diversion channel. Aquatic vegetation in interior marsh ponds and channels is expected to increase naturally. An estimated 640 net acres of marsh will be created over the 20-year life of the project.

Progress to Date

The project is currently in Phase I, Engineering and Design.

This project is on Priority Project List 17.

For more information, please contact:



Federal Sponsor:






U.S. Environmental Protection Agency
 Dallas, TX
 (214) 665-7255

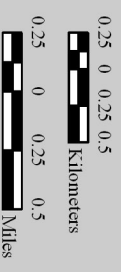
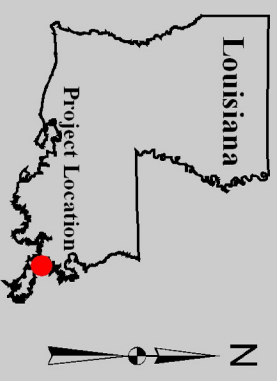


Local Sponsor:

Coastal Protection and Restoration Authority
 Baton Rouge, LA
 (225) 342-4736

Bohemia Mississippi River Reintroduction (BS-15)

-  Plug *
-  Diversion Channel Improvement *
-  Forebay *
-  Marsh Creation *
-  Project Boundary
- *denotes proposed features



Map Produced by:
 U.S. Department of the Interior
 U.S. Geological Survey
 National Wetlands Research Center
 Coastal Restoration Field Station
 Baton Rouge, La.

Background Imagery:
 2005 Digital Orthophoto Quarter Quadrangle
 Map Date: November 08, 2007
 Map ID: USGS-NWRC 2008-11-0060
 Data accurate as of: August 23, 2007

