



Delta Management at Fort St. Philip (BS-11)

Project Status

Approved Date: 2001 **Project Area:** 1,305 acres
Approved Funds: \$3 M **Total Est. Cost:** \$3 M
Net Benefit After 20 Years: 267 acres
Status: Construction Completed
Project Type: Outfall Management/ Sediment Trapping
PPL #: 10

Location

The project is located on the east side of the Mississippi River near the crevasse (a break in the levee) that formed during the 1973 flood at Fort St. Philip in Plaquemines Parish, Louisiana.

Problems

Since the crevasse, the area has been in a state of transition. It was once an organic, low-energy system consisting of brackish-saline marsh and was in decline. After the crevasse, it became a deltaic environment dominated by the formation of fresh and intermediate marshes.

GIS analysis indicates that marsh loss has decreased considerably in the project area, and marsh building has begun to occur. Many areas that historically experienced marsh loss were becoming shallower with the introduction of river sediments.

Emergent marsh has been forming throughout the area on the newly accreted mineral soils. Even though this area has experienced a net gain in emergent marsh, this project will enhance the natural marsh-building processes and increase the growth rate of emergent wetlands.

Restoration Strategy

The project included the construction of terraces in open water habitat and the construction of six crevasses to increase marsh-building processes.

The terraces were planted with seashore paspalum (*Paspalum vaginatum*) and smooth cordgrass (*Spartina alterniflora*).



Marshes in the BS-11 project area.

Progress to Date

The construction contractor mobilized to the project site in June 2006. A barge-mounted bucket dredge was used to construct the crevasses while marsh-buggy backhoes constructed the terraces. The six crevasses were completed in August 2006 with completion of the terraces in November 2006. A final inspection was conducted on December 4, 2006.

The project was completed in 2006. No maintenance has been conducted and monitoring activities are ongoing. The project will expire in 2026.

This project is on Priority Project List 10.

For more information, please contact:



Federal Sponsor:
U.S. Fish and Wildlife Service
Lafayette, LA
(337) 291-3100



Local Sponsor:
Coastal Protection and Restoration Authority
Baton Rouge, LA
(225) 342-4736

Delta Management at Fort St. Philip (BS-11)

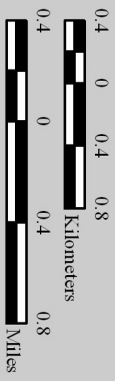
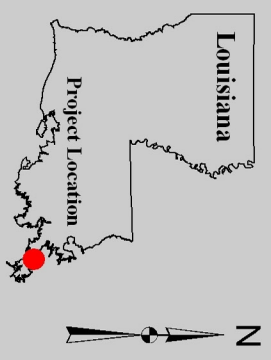
Crevasse *

Terrace *

Project Boundary

* denotes proposed feature

USGS
science for a changing world



Map Produced by:
U.S. Department of the Interior
U.S. Geological Survey
National Wetlands Research Center
Coastal Restoration Field Station
Baton Rouge, La.

Background Imagery:
2005 Digital Orthophoto Quarter Quadrangle
Map Date: September 19, 2006
Map ID: USGS-NWRC 2006-11-0505
Data accurate as of: September 13, 2006

