



# Grand Liard Marsh and Ridge Restoration (BA-68)

## Project Status

**Approved Date:** 2009      **Project Area:** 484 acres  
**Approved Funds:** \$35 M      **Total Est. Cost:** \$35 M  
**Net Benefit After 20 Years:** 370 acres  
**Status:** Completed  
**Project Type:** Marsh Creation and Ridge Restoration  
**PPL #:** 18

## Location

The project is located in Region 2, within the Barataria Basin portion of Plaquemines Parish. The project is specifically located within the Bastian Bay and Grand Liard mapping units, near the vicinity of Triumph.

## Problems

The Bastian Bay and Grand Liard mapping units were historically structured by a series of north-south bayous and associated ridges. Over the preceding decades the majority of these bayou ridges and the marshes flanking them have disappeared. The Grand Liard ridge is the most prominent remaining ridge, and separates the open bays of the Bastian Bay and Grand Liard mapping units. Past land loss projections indicate a loss rate of -3.3%/yr; and also suggest that the remaining bayou bank wetlands would completely convert to open water by 2050 without the project.



Completed construction at Grand Liard

## Restoration Strategy

The project restored both structural and habitat functions of Grand Liard Bayou and flanking marshes. The project created and nourished 450 acres of marsh and restored 15,484 linear feet of ridge on the east bank of Bayou Grand Liard. Portions of the created marsh will be planted with smooth cordgrass, and the ridge will be planted with appropriate woody vegetation. Containment dikes will be gapped to encourage establishment of natural marsh hydrology and support fisheries.

## Progress to Date

The project was approved for Phase 1 funding (engineering and design) at the January 2009 Task Force meeting and was selected for Phase II funding (construction) at the February 2012 Task Force meeting. Construction commenced in July 2014 and was completed in August 2015. Portions of the marsh will be planted with vegetation in the spring of 2018. The constructed ridge will be planted with woody vegetation in the future.

This project is on Priority Project List 18.

For more information, please contact:

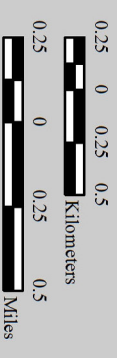
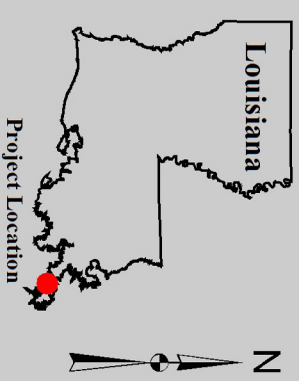
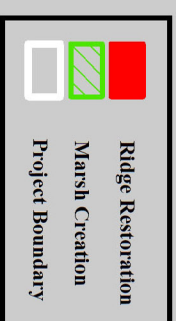


**Federal Sponsor:**  
National Marine Fisheries Service  
Baton Rouge, LA  
(225) 778-7380



**Local Sponsor:**  
Coastal Protection and Restoration Authority  
Baton Rouge, LA  
(225) 342-4733

# Grand Liard Marsh and Ridge Restoration (BA-68)



Map Produced by:  
U.S. Department of the Interior  
U.S. Geological Survey  
National Wetlands Research Center  
Coastal Restoration Assessment Branch  
Baton Rouge, La.

Background Imagery:  
2013 NAIP Photography

Map Date: September 25, 2015  
Map ID: USGS-NWRC 2015-11-0043  
Data accurate as of: September 1, 2015

