



# South Shore of the Pen Shoreline Protection and Marsh Creation (BA-41)

## Project Status

**Approved Date:** 2005      **Project Area:** 141 acres  
**Approved Funds:** \$19.2 M      **Total Est. Cost:** \$21.0 M  
**Net Benefit After 20 Years:** 106 acres  
**Status:** Completed  
**Project Type:** Shoreline Protection and Marsh Creation  
**PPL #:** 14

## Location

The project area is located in Jefferson Parish, Louisiana, in the vicinity of Bayou Dupont and the Barataria Bay Waterway.

## Problems

The triangular landmass bounded by the southern shoreline of The Pen (an abandoned land reclamation effort), the Barataria Bay Waterway (Dupre Cut), and the Creole Gas Pipeline Canal is deteriorating because of shoreline erosion (ranging from 5 to 30 feet per year) and interior marsh loss. Loss of this protective landmass would provide a more direct connection between the marine/tidal processes of the lower and the freshwater-dominated upper Barataria Basin.



Shoreline erosion along the south shore of The Pen.

## Restoration Strategy

The goals of this project are to stop shoreline erosion and to create and nourish marsh located between The Pen and Barataria Bay Waterway.

For shoreline protection, approximately 11,750 feet of foreshore rock dike will be constructed along the south shore of The Pen and Bayou Dupont. Two existing bayous will remain open, and a site-specific opening to The Pen will be incorporated at the eastern marsh creation site. Dedicated dredging will be used to create approximately 175 acres of marsh and nourish an additional 132 acres of marsh within the triangular area bounded by the south shore of The Pen, the Barataria Bay Waterway (Dupre Cut), and the Creole Gas Pipeline Canal. Containment dikes constructed for marsh creation and nourishment will be degraded upon completion of construction.

It is estimated that the project will prevent the loss of 56 acres of marsh caused by shoreline erosion, as well as create 175 acres of marsh, and nourish 132 acres of intermediate marsh. Over the 20-year project life, it is estimated that the project will produce 211 net acres.

## Progress to Date

The foreshore rock dike and southern portion of the marsh creation area has been completed. The northern portion of the marsh creation area is being pursued by the Corps of Engineers as part of its Barataria Landbridge Storm Risk Reduction Project.

This project is on Priority Project List (PPL) 14.

*For more information, please contact:*








**Federal Sponsor:**  
 Natural Resources Conservation Service  
 Alexandria, LA  
 (318) 473-7756

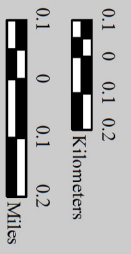
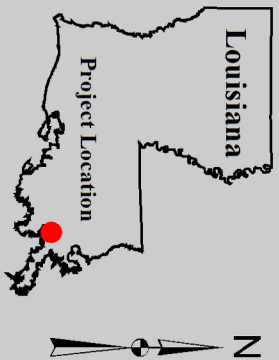


**Local Sponsor:**  
 Coastal Protection and Restoration Authority  
 Baton Rouge, LA  
 (225) 342-4736

# South Shore of The Pen Shoreline Protection and Marsh Creation (BA-41)

	Shoreline Protection
	Marsh Creation
	Unfunded Marsh Creation *
	Borrow Site
	Project Boundary

\* denotes proposed features



Map Produced by:  
 U.S. Department of the Interior  
 U.S. Geological Survey  
 Wetland and Aquatic Research Center  
 Coastal Restoration Assessment Branch  
 Baton Rouge, La.

Background Imagery:  
 2013 National Agriculture Inventory  
 Program (NAIP) Photography  
 Map Date: November 02, 2015  
 Map ID: USGS-NWRC 2016-11-0005  
 Data accurate as of: November 02, 2015