



# Delta Building Diversion at Myrtle Grove (BA-33)

De-authorized

## Project Status

**Approved Date:** 2001**Approved Funds:** \$3 M**Net Benefit After 20 Years:****Status:** De-authorized**Project Type:** Water Diversion**Project Area:** 416,563 acres**Total Est. Cost:** \*see below

## Location

The project is located in the Barataria Basin, in Jefferson Parish, Louisiana.

## Problems

The project area has undergone substantial loss of wetlands and a significant habitat shift to more saline marshes in the last 50 years. Moderately high wetland loss rates are primarily caused by the high subsidence and altered hydrology associated with navigation and flood control projects, as well as oil and gas activities. Without remediation, it is anticipated that approximately 14,500 acres of wetlands will be lost in the project area over the next 20 years and that wetland types will continue to shift towards more saline habitats.

## Restoration Strategy

The project would involve installation of gated box culverts on the west bank of the Mississippi River in the vicinity of Myrtle Grove; dedicated dredging from the Mississippi River to create marsh in the vicinity of Bayou Dupont, the Barataria Bay Waterway, and the Wilkinson Canal; or a combination of these actions. Supporting features might include a conveyance channel with parallel mainline flood control levees and an outflow channel with guide levees. Dredging to create adequate outfall in the headwaters of Bayou Dupont and construction of a pump station may be required.



Looking south towards the Barataria Bay Waterway near Bayou St. Denis.

## Progress to Date

Scoping meetings in compliance with the National Environmental Policy Act of 1969 have been held, and alternative plan formulation has been completed. Initial plan analyses are underway.

This project is on Priority Project List 10.

\*Coastal Wetlands Planning Protection and Restoration Act will fund the \$3 million engineering and design phase of the project, while the remaining \$141.3 million needed for construction will be sought through other funding mechanisms. This project is currently de-authorized.

*For more information, please contact:*

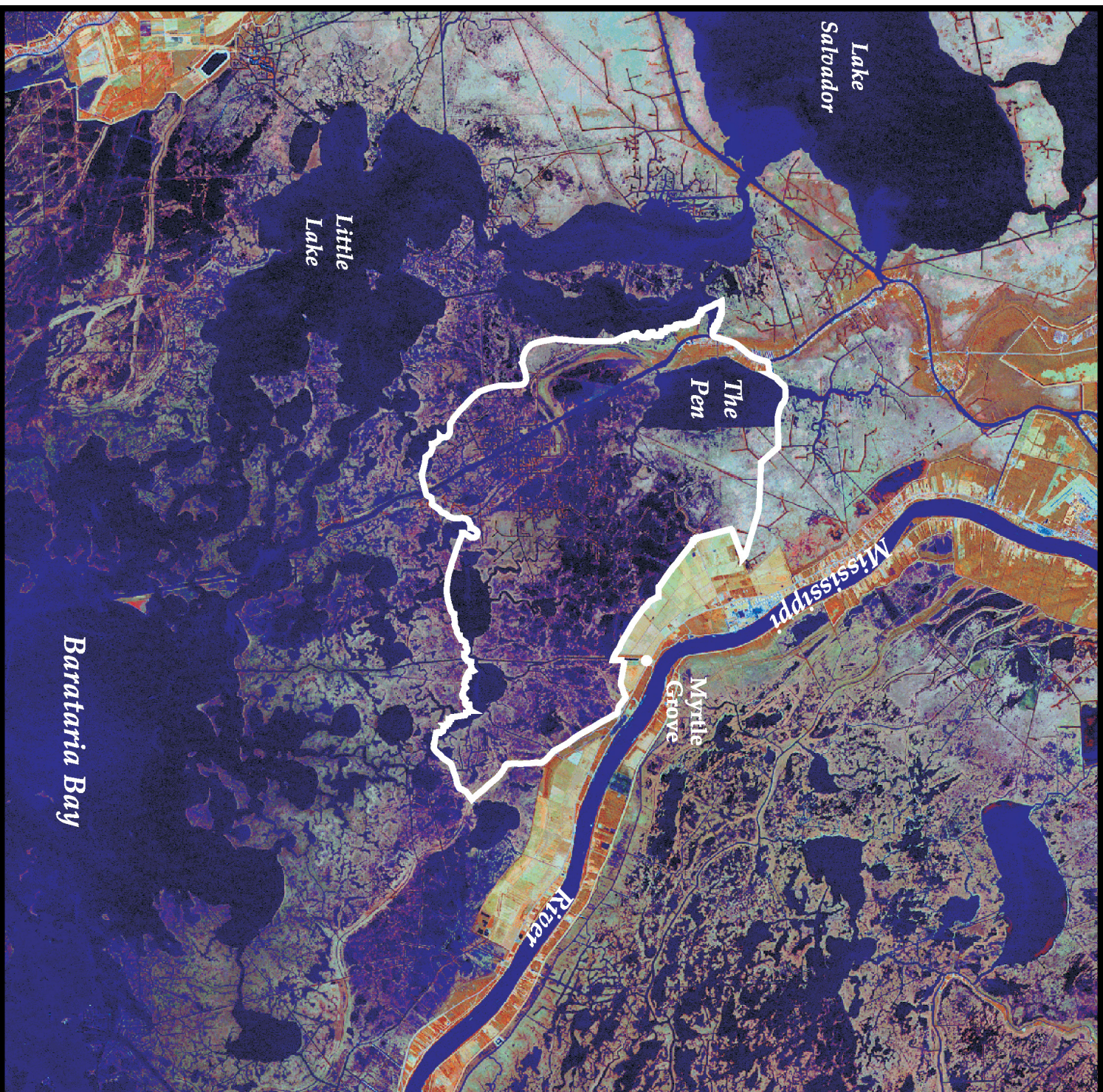

**Federal Sponsor:**

U.S. Army Corps of Engineers  
New Orleans, LA  
(504) 862-1597


**Local Sponsor:**

Louisiana Department of Natural Resources  
Baton Rouge, LA  
(225) 342-7308

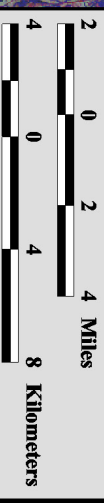
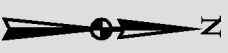
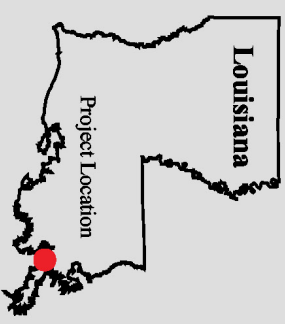




# Delta Building Diversions at Myrtle Grove (BA-33)



Project Boundary



Map Produced By:  
U.S. Department of the Interior  
U.S. Geological Survey  
National Wetlands Research Center  
Coastal Restoration Field Station

Background Imagery:  
Thematic Mapper Satellite Imagery 2000  
Map Date: August 27, 2003  
Map ID: USGS-NWRC 2003-11-130  
Data accurate as of: January 29, 2003