



Naomi Outfall Management (BA-03c)

Project Status

Approved Date: 1996 **Project Area:** 26,603 acres
Approved Funds: \$3 M **Total Est. Cost:** \$3 M
Net Benefit After 20 Years: 633 acres
Status: Completed Aug. 2002
Project Type: Outfall Management
PPL #: 5

Location

The project features are located near the town of Lafitte in Jefferson Parish, Louisiana, on two streams, Goose Bayou and Bayou Dupont that connect the open water area of "The Pen" to the Barataria Bay Waterway.

Problems

Construction of the Mississippi River levee has stopped annual flooding that historically nourished surrounding marshes with sediments, nutrients, and fresh water. This river nourishment counteracted subsidence, saltwater intrusion, and subsequent marsh loss.

Restoration Strategy

The project features include two fixed crest rock weirs with boat bays, across Goose Bayou and Bayou Dupont. The purpose of the project is to manage the sediment-laden fresh water diverted by the Naomi Siphon [a state- and Plaquemines Parish-funded project (BA-03) located along the west bank of the Mississippi River near the community of Naomi]. The two fixed crest weirs will assist in the management of the siphon outfall water by reducing freshwater loss, allowing maximum sediment retention and nutrient uptake, and reducing saltwater intrusion into the project area.



Weirs constructed with a boat bay aid in the effective management of hydrology while still allowing the passage of small boats and vessels.

Progress to Date

This project was combined with the Barataria Bay Waterway East Side Shoreline Protection (BA-26) project for planning and design; however, construction was separate.

The operation of the siphon was reviewed by DNR. A hydraulic analysis was performed and the results were concurred by both agencies. Construction was completed in 2002.

This project is on Priority Project List 5.

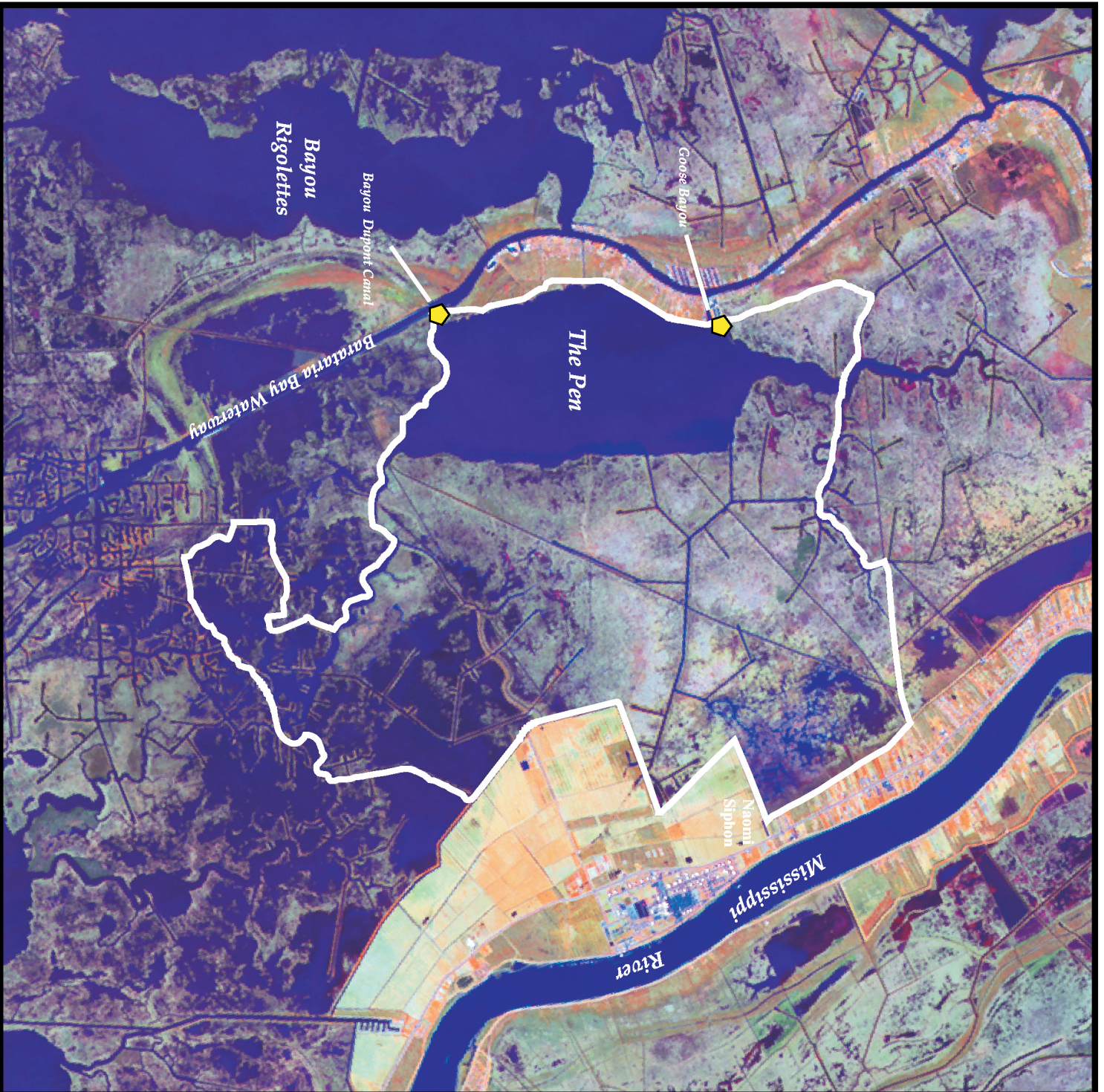
For more information, please contact:





Federal Sponsor:
 Natural Resources Conservation Service
 Alexandria, LA
 (318) 473-7756

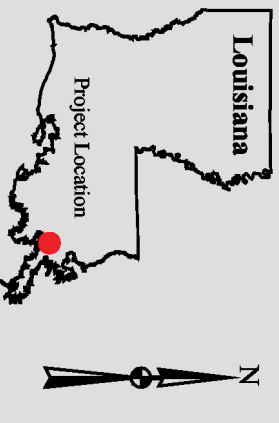
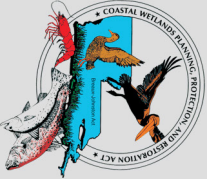


Local Sponsor:
 Coastal Protection and Restoration Authority
 Baton Rouge, LA
 (225) 342-4736



Naomi Outfall Management (BA-03c)

 Weir
 Project Boundary



Map Produced By:
 U.S. Department of the Interior
 U.S. Geological Survey
 National Wetlands Research Center
 Coastal Restoration Field Station
 Background Imagery:
 2002 Thematic Mapper Imagery

Map Date: August 27, 2003
 Map ID: USGS-NWRC/2003-11-099
 Data accurate as of: April 4, 2003