



rev. January 2008
Cost figures as of: April 2024

GIWW (Gulf Intracoastal Waterway) to Clovelly Hydrologic Restoration (BA-02)

Project Status

Approved Date: 1991 **Project Area:** 14,948 acres
Approved Funds: \$12.7 M **Total Est. Cost:** \$12.8 M
Net Benefit After 20 Years: 175 acres
Status: Completed Oct. 2000
Project Type: Hydrologic Restoration
PPL #: 1

Location

The center of the project area is in Lafourche Parish, Louisiana, approximately 5 miles southeast of Cut Off. It is bordered to the north by a pipeline canal north of the Clovelly Canal, to the west by West Fork Bayou L'Ours, to the east by Little Lake, and to the south by oilfield canals. The project encompasses 14,948 acres of primarily intermediate (94%) and brackish (6%) marshes.

Problems

The wetlands in the project area are of great importance to the ecological future of the Barataria estuary and to the protection of adjacent developed areas. The area is losing approximately 450 acres per year due to channelization, shoreline erosion, and saltwater intrusion.

Restoration Strategy

The project features include three rock weirs and four canal plugs. There is also a plug with a flap-gated culvert and one with a variable crest weir. In addition, there is a weir with a barge bay in the Clovelly Canal, 5,000 feet of shoreline reestablishment along project-area canals, and 6,000 feet of lake-rim reestablishment at Bay L'Ours. Finally, the spoil and marsh banks along canals in the project area's southern perimeter are being maintained.

Progress to Date

The project was divided into two contracts in order to expedite implementation. The first contract was to install most of the weir structures.

The second contract was to install bank protection, one weir, and one plug.

The construction of the project's unit 1 was completed in November 1997. Unit 2 was completed in October 2000. The O&M plan was signed in 2002. This project is on Priority Project List 1.



The constructed rock breakwater located in Bay L'Ours will assist in reducing wave energies before they impact the shore and will also arouse the curiosity of local waterfowl such as these pelicans.



This winch which is permanently attached to the variable crest, water control structure located right off Briton Canal, will help to configure the structure according to a pre-determined water management plan.

For more project information, please contact:

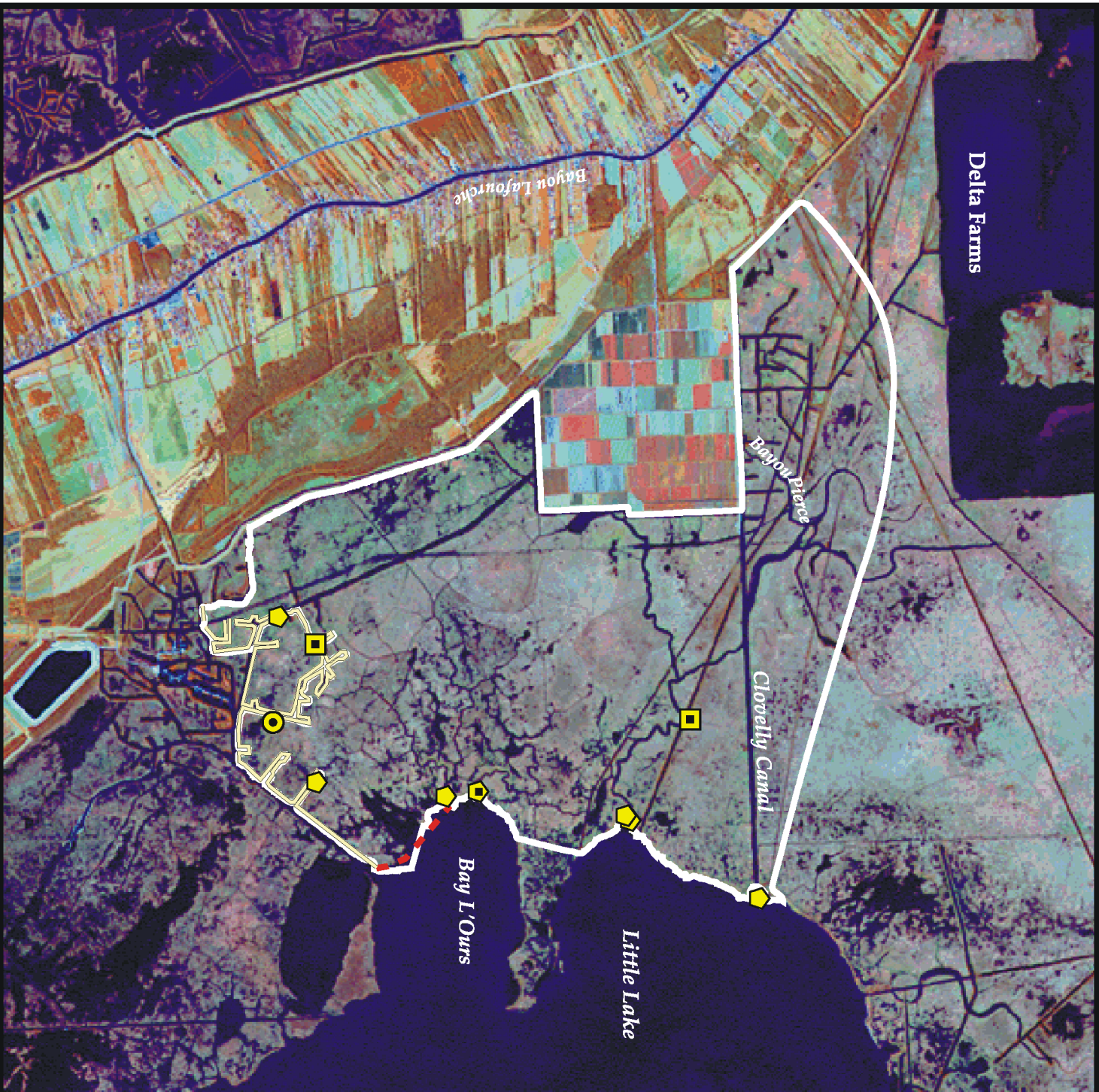


Federal Sponsor:
Natural Resources Conservation Service
Alexandria, LA
(318) 473-7756



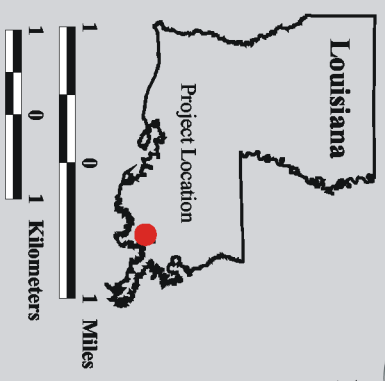
Local Sponsor:
Coastal Protection and Restoration Authority
Baton Rouge, LA
(225) 342-4736

Delta Farms



**GIWW
(Gulf Intracoastal
Waterway)
to Clovelly Hydrologic
Restoration
(BA-02)**

- Culvert
- Plug
- Weir
- Weir and Plug
- Spoil Bank
- Shoreline Protection
- Project Boundary



Map Produced By:
 U.S. Department of the Interior
 U.S. Geological Survey
 National Wetlands Research Center
 Coastal Restoration Field Station

Background Imagery:
 Thematic Mapper Satellite Imagery 2000
 Map Date: August 27, 2002
 Map ID: 2002-11-738
 Data accurate as of: August 27, 2002