



Coastal Wetlands Planning, Protection, and Restoration Act (CWPPRA) Priority Project List 21 Regional Planning Team (RPT) Coastwide Voting Meeting

LA Department of Wildlife and Fisheries (Louisiana Room)
2000 Quail Drive, Baton Rouge, LA
February 22, 2011, 10:00 a.m. – 1:00 p.m.

AGENDA

Meeting Purpose: To select PPL 21 nominees from the list of projects proposed during the PPL 21 Regional Planning Team (RPT) meetings held on January 25th, 26th, and 27th, 2011. Information on the PPL 21 project proposals is available on the web at: http://www.mvn.usace.army.mil/pd/cwppra_mission.htm. The CWPPRA Agencies and Participating Coastal Parishes will vote to select 21 nominee projects and 6 demonstration projects as described below.

1. Welcome and Introductions.

2. Procedures for PPL 21 Coastwide Voting:

- a. Project proposals or changes will **NOT** be made during the meeting (proposals were accepted during the RPT meetings only, and changes were due by February 4, 2011).
- b. Public comments will **NOT** be accepted during the meetings (oral comments were accepted during the RPT meetings and written comments were due by February 10, 2011).
- c. Coastal Parish Voting representatives will complete voting sheets, ranking projects by each basin from highest to lowest, giving highest value to their highest priority project.
- d. All voting sheets for all basins will be collected between 10:00 a.m. and 11:00 a.m.
- e. Votes will be tallied and sorted for all basins after all voting sheets are collected.
- f. The projects with the highest resulting scores will be selected as PPL 21 nominees as follows for each basin: three projects will be selected in Terrebonne, Barataria, Pontchartrain, and Breton Sound Basins; two will be selected in the Teche/Vermilion, Mermentau, and Calcasieu/Sabine Basins; and one project will be selected in the Mississippi River Delta and Atchafalaya Basins.
- g. One coastwide project will be selected.
- h. Six demonstration projects will be selected.
- i. PPL 21 nominee project voting results will be presented during the meeting and posted on the CWPPRA Newsflash and on the web at:
http://www.mvn.usace.army.mil/pd/cwppra_mission.htm.

3. Explanation of Nominee Project Evaluations and Technical Committee Selection of PPL 21 Project Candidates.

4. Meeting Announcements:

April 8, 2011	9:30 a.m.	Technical Committee	New Orleans
June 8, 2011	9:30 a.m.	Task Force	Lafayette
September 20, 2011	9:30 a.m.	Technical Committee	Baton Rouge
October 12, 2011	9:30 a.m.	Task Force	New Orleans
November 16, 2011	7:00 p.m.	PPL 21 Public Meeting	Abbeville
November 17, 2011	7:00 p.m.	PPL 21 Public Meeting	New Orleans

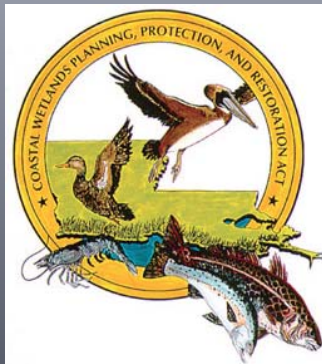
Coastal Wetlands Planning, Protection and Restoration Act (CWPPRA)

PPL 21 Coastwide Voting Meeting



22 February, 2011
Baton Rouge, LA

1. Welcome and Introductions

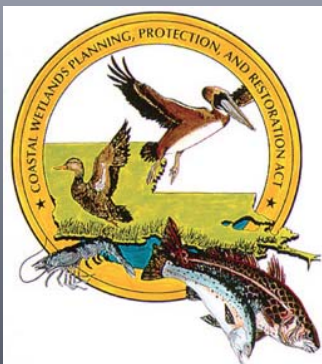


Meeting Purpose

- To select PPL 21 nominees from the list of projects proposed during the PPL 21 Regional Planning Team (RPT) meetings held on January 25, 26, and 27, 2011. The CWPPRA agencies and participating coastal parishes will vote to select 21 nominee projects and 6 demonstration projects.



2. Explanations of Procedures/ Announcements



Explanation of Procedures: General

- Initial Regional Planning Team (RPT) meetings took place Jan. 25-27, 2011 to accept project nominations under PPL 21.
- Parishes were expected to identify voting representatives during or prior to the RPT meetings
- This coastwide voting meeting is being held to conduct voting by basin, when necessary, with the end result being a list of 21 nominees and 6 demos for PPL 21
- Paper ballots will be provided to each designated voter in each basin



Explanation of Procedures: Ground Rules

- Nominees will be selected by consensus, if possible
- No voting will be necessary for Mississippi River Basin
- If voting is required, each officially designated parish representative in the basin and each Federal agency and the State will vote
- Eligible voters will rank the highest number of points in each basin, the next highest one less, and so on, with the lowest ranking project receiving one point (voters must assign a point score to all projects)



Coastwide Voting Meeting Overview

- Project proposals or changes will NOT be made during the meeting
- Public comments on projects will NOT be accepted during the meeting
- Voters rank project by each basin from highest to lowest, giving highest value to highest priority project
- Voting sheets for all basins will be collected between 9:30 a.m. and 10:30 a.m.
- Votes will be tallied and sorted for all basins after all voting sheets are collected
- Projects with the highest resulting scores will be selected as PPL 21 nominees so follows for each basin:
 - 3 in Terrebonne, Barataria, Pontchartrain, and Breton Sound Basin
 - 2 in Tech/Vermilion, Mermentau, Calcasieu/Sabine
 - 1 in Mississippi River Delta and Atchafalaya Basin
- One coastwide project will be selected
- Six demo projects will be selected
- Voting results will be presented during the meeting and posted on the CWPPRA Newsflash



Explanation of Procedures: Voting Eligibility

PPL 21	Parish Eligibility to Vote in Basins										Designated Parishes Signed Up to Vote on Feb 22, 2011	
Parish	R1-Pontchartrain	R2-Mississippi Riv. Delta	R2-Breton Sound	R2-Barataria	R3-Terrebonne	R3-Atchafalaya	R3-Tech-Vermilion	R4-Calcasieu-Sabine	R4-Mermentau	Demonstration Projects (coastwide)	Designated Primary Voting Representative	Designated Alternate Voting Representative
Ascension	X			X						X		
Assumption				X	X					X		
Calcasieu								X		X	Pam Mattingly	Lourie Cormier
Cameron								X	X	X	Tina Horn	
Iberia					X	X	X			X	Kevin Hagerich	Sally Angers
Jefferson	X		X							X	Marnie Winter	Jason Smith
Lafourche			X							X	Windell Curole	
Livingston	X									X		
Orleans	X			X						X	Charles E. Allen	
Plaquemines	X	X	X	X						X	P.J. Hahn	Albertine Kimble
St. Bernard	X	X								X	William McCartney	
St. Charles	X			X						X	Earl Matherne	
St. James	X			X						X	Jody Chenier	
St. John	X			X						X	Michael Henderson	
St. Martin					X					X		
St. Mary					X	X	X			X	Paul P. Naquin, Jr.	Tammy Luke
St. Tammany	X									X	Brian Fortson	Danny Bond
Tangipahoa	X									X	Maurice Jordan	
Terrebonne					X	X				X	Nick Matherne	Al Levron
Vermilion						X		X	X	X	Gerald Butaud	Sherrill Sagrera

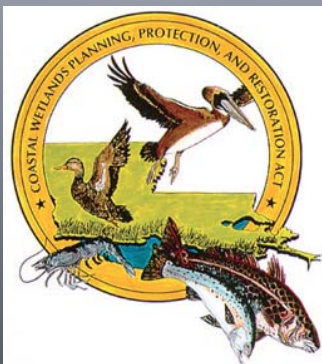


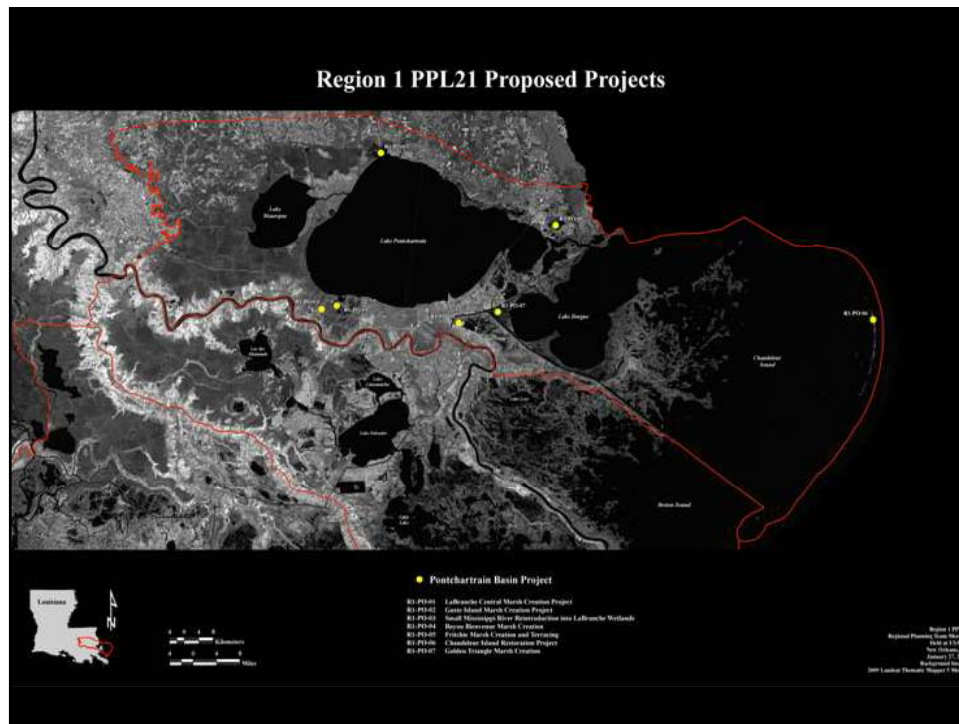
Announcements: Upcoming Meetings

- Technical Committee Meeting:** 8 April '11, New Orleans at 9:30 a.m.
Selection of 10 PPL 21 candidates & up to 3 demos
- Task Force Meeting:** 8 June '11, Lafayette at 9:30 a.m.
- Technical Committee Meeting:** 20 September '11, Baton Rouge at 9:30 a.m.
O&M and Monitoring funding recommendations
- Task Force Meeting:** 12 October '11, Baton Rouge at 9:30 a.m.
O&M and Monitoring funding approvals
- PPL 21 Public Meetings:** 16 November '11, Abbeville at 7:00 p.m.
17 November '11, New Orleans at 7:00 p.m.
- Technical Committee Meeting:** 30 November '11, Baton Rouge at 9:30 a.m.
Recommendation of up to 4 PPL 21 projects and demo
- Task Force Meeting:** 19 Jan '11, New Orleans at 9:30 a.m.
Final selection of projects for Phase I funding



3. Coastwide Voting by Basin





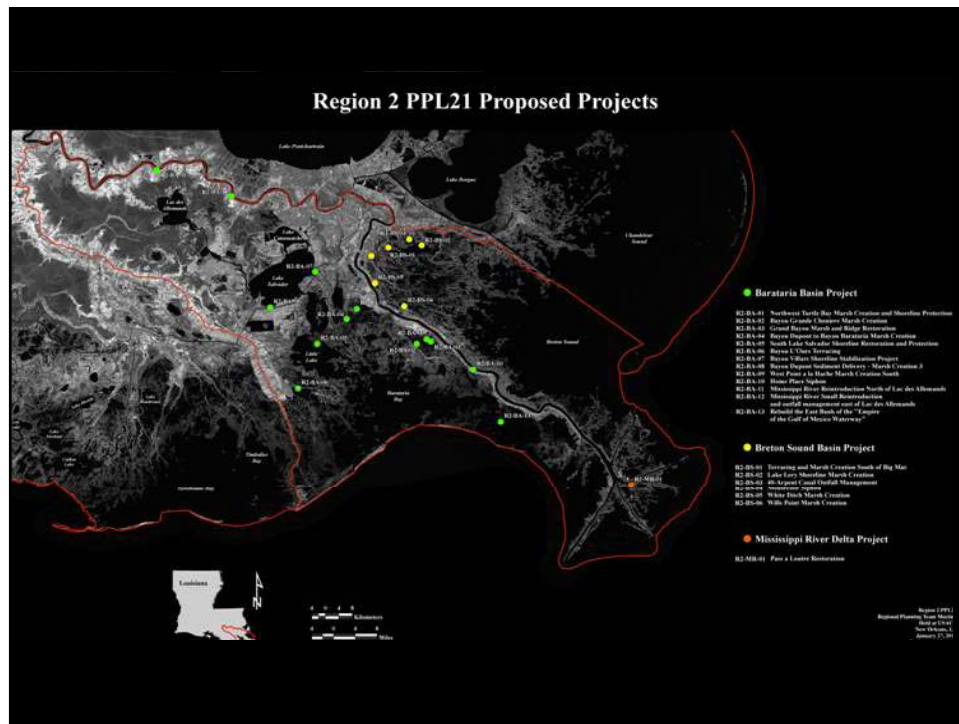
PPL 21		Region 1 - PONTCHARTRAIN BASIN															
Proposal Number	Project Proposals	AOCPR	EPA	NPS	NRCS	USACE	USFWS	Jefferson	Orleans	Plaquemines	St. Bernard	St. Charles	St. James	St. John	St. Tammany	Tangipahoa	Total
R1-PO-01	LaBranche Central Marsh Creation Project																0
R1-PO-02	Guste Island Marsh Creation Project																0
R1-PO-03	Small Mississippi River Reintroduction into LaBranche Wetlands																0
R1-PO-04	Bayou Bienvenue Marsh Creation																0
R1-PO-05	Fritchie Marsh Creation and Terracing																0
R1-PO-06	Northern Chandeaur Island Restoration																0
R1-PO-07	Golden Triangle Marsh Creation																0
Rank 7 thru 1 for a total of = 28		0	0	0	0	0	0	0	0	0	0	0	0	0	0	0	0

Name, title, and entity representing _____

Signature _____

Eligible Parishes:	Signed Up To Vote
Ascension	
Jefferson	X
Livingston	
Orleans	X
Plaquemines	X
St. Bernard	X
St. Charles	X
St. James	X
St. John the Baptist	X
St. Tammany	X
Tangipahoa	X

3 projects will be selected




PPL 21 **Region 2 - BRETON SOUND BASIN**

Proposal Number	Project Proposals	LACPR	EPA	NMFS	NRCS	USACE	USFWS	Plaquemines	St. Bernard	Total
R2-BS-01	Terracing and Marsh Creation South of Big Mar									0
R2-BS-02	Lake Lery Shoreline Marsh Creation									0
R2-BS-03	40-Arpent Canal Outfall Management									0
R2-BS-04	Monsecour Siphon									0
R2-BS-05	White Ditch Marsh Creation Sediment Delivery									0
R2-BS-06	White Point Marsh Creation									0
Rank 6 thru 1 for a total of = 21		0	0	0	0	0	0	0	0	0

Name, title, and entity representing _____

Signature _____

Eligible Parishes:	Signed Up To Vote
Plaquemines	X
St. Bernard	X



PPL 21 **Region 2 - BARATARIA BASIN**


Proposal Number	Project Proposals	LACPR	EPA	NMFS	NRCS	USACE	USFWS	Assension	Assumption	Jefferson	Lafourche	Orleans	Plaquemines	St. Charles	St. James	St. John	Total
R2-BA-01	Northwest Turtle Bay Marsh Creation and Shore Protection																0
R2-BA-02	Bayou Grande Cheniere Marsh Creation																0
R2-BA-04	Bayou Duport to Bayou Barataria Marsh Creation																0
R2-BA-05	South Lake Salvador Shoreline Restoration and Protection																0
R2-BA-06	Bayou L'Ours Terracing																0
R2-BA-07	Bayou Villars Shoreline Stabilization Project																0
R2-BA-08	Bayou Duport Sediment Delivery- Marsh Creation 3																0
R2-BA-09	West Pointe a la Hache Marsh Creation South																0
R2-BA-10	Home Place Siphon																0
R2-BA-11	Mississippi River Reintro North of Lac des Allemands (MR RINOLDA)																0
R2-BA-12	Mississippi River Small Intro (Siphon) and outfall management east of Lac des Allemands																0
R2-BA-13	Rebuild the East Bank of the Empire to Gulf of Mexico Waterway																0
Rank 12 thru 1 for a total of ~78		0	0	0	0	0	0	0	0	0	0	0	0	0	0	0	0

Name, title, and entity representing _____

Signature _____

Eligible Parishes:	Signed Up To Vote
Assension	
Assumption	
Jefferson	X
Lafourche	X
Orleans	X
Plaquemines	X
St. Charles	X
St. James	X
St. John the Baptist	X

3 projects will be selected




PPL 21 **Region 2 - MISSISSIPPI RIVER DELTA BASIN**

Proposal Number	Project Proposals	LACPR	EPA	NMFS	NRCS	USACE	USFWS	Plaquemines	Total
R2-MR-01	Pass a Loutre Restoration								0
selected by default		0	0	0	0	0	0	0	

Name, title, and entity representing _____

Signature _____

Eligible Parishes:	Signed Up To Vote
Plaquemines	X





PPL 21

Region 3 - TERREBONNE BASIN

Proposal Number	Project Proposals	LAOOPR	EPA	NMFS	NRCS	USACE	USFWS	Assumption	Lafourche	Iberia	St. Martin	St. Mary	Terrebonne	Total
R3-TE-01	Lake Decade Marsh Creation and Nourishment													0
R3-TE-02	Wine Island Barrier Island Restoration													0
R3-TE-03	Timbalier Island Shoreline Sediment Nourishment													0
R3-TE-04	East Island Beach and Backbarrier Marsh Restoration													0
R3-TE-05	Marsh Nourishment on Point au Fer Island by Beneficial Use of Dredged Material													0
R3-TE-06	Bay Raccourci Shoreline Restoration and Marsh Creation													0
R3-TE-07	Lake Tambour Marsh Creation													0
R3-TE-08	Lake Boudreaux Marsh Creation and Shoreline Protection													0
R3-TE-09	Caillou Lake Land Bridge Restoration													0
R3-TE-10	North Catfish Lake Rim Restoration Project													0
R3-TE-11	South East Bayou Terrebonne Marsh Creation													0
R3-TE-12	Carenco Bayou Freshwater Introduction Project													0
Rank 12 thru 1 for a total of = 78		0	0	0	0	0	0	0	0	0	0	0	0	

Name, title, and entity representing _____

Signature _____

Eligible Parishes:	Signed Up To Vote
Assumption	
Lafourche	X
Iberia	X
St. Martin	
St. Mary	X
Terrebonne	X


PPL 21 **Region 3 - ATCHAFALAYA BASIN**

Proposal Number	Project Proposals	LAOCPR	EPA	NMFS	NRCS	USACE	USFWS	Iberia	St. Mary	Terrebonne	Total
R3-AT-01	West Wax Lake Wetlands Diversion										0
R3-AT-02	Reef Restoration between Point Aufer and East Marsh Island										0
	Rank 2 thru 1 for a total of = 3	0	0	0	0	0	0	0	0	0	

Name, title, and entity representing

Signature

Eligible Parishes:	Signed Up To Vote
Iberia	X
St. Mary	X
Terrebonne	X




PPL 21 **Region 3 - TECHE-VERMILION BASIN**

Proposal Number	Project Proposals	LAOCPR	EPA	NMFS	NRCS	USACE	USFWS	Iberia	St. Mary	Vermilion	Total
R3-TV-01	Cote Blanche Freshwater & Sediment Intro & Shoreline Protection										0
R3-TV-02	Cole's Bayou Marsh Creation and Restoration										0
R3-TV-03	Southeast Marsh Island Marsh Creation & Nourishment										0
	Rank 3 thru 1 for a total of = 6	0	0	0	0	0	0	0	0	0	

Name, title, and entity representing

Signature

Eligible Parishes:	Signed Up To Vote
Iberia	X
St. Mary	X
Vermilion	X



11



COAST WIDE PROJECTS

[illegible]

Name, title, and entity representing

Signature _____

Coastwide DEMONSTRATION PROJECTS

Eligible Parishes:
All coastal parishes



PPL 21

Coastwide DEMONSTRATION PROJECTS

[illegible]

Name, title, and entity representing

Signature

Coastwide DEMONSTRATION PROJECTS

Eligible Parishes:
All coastal parishes



4. Adjourn

