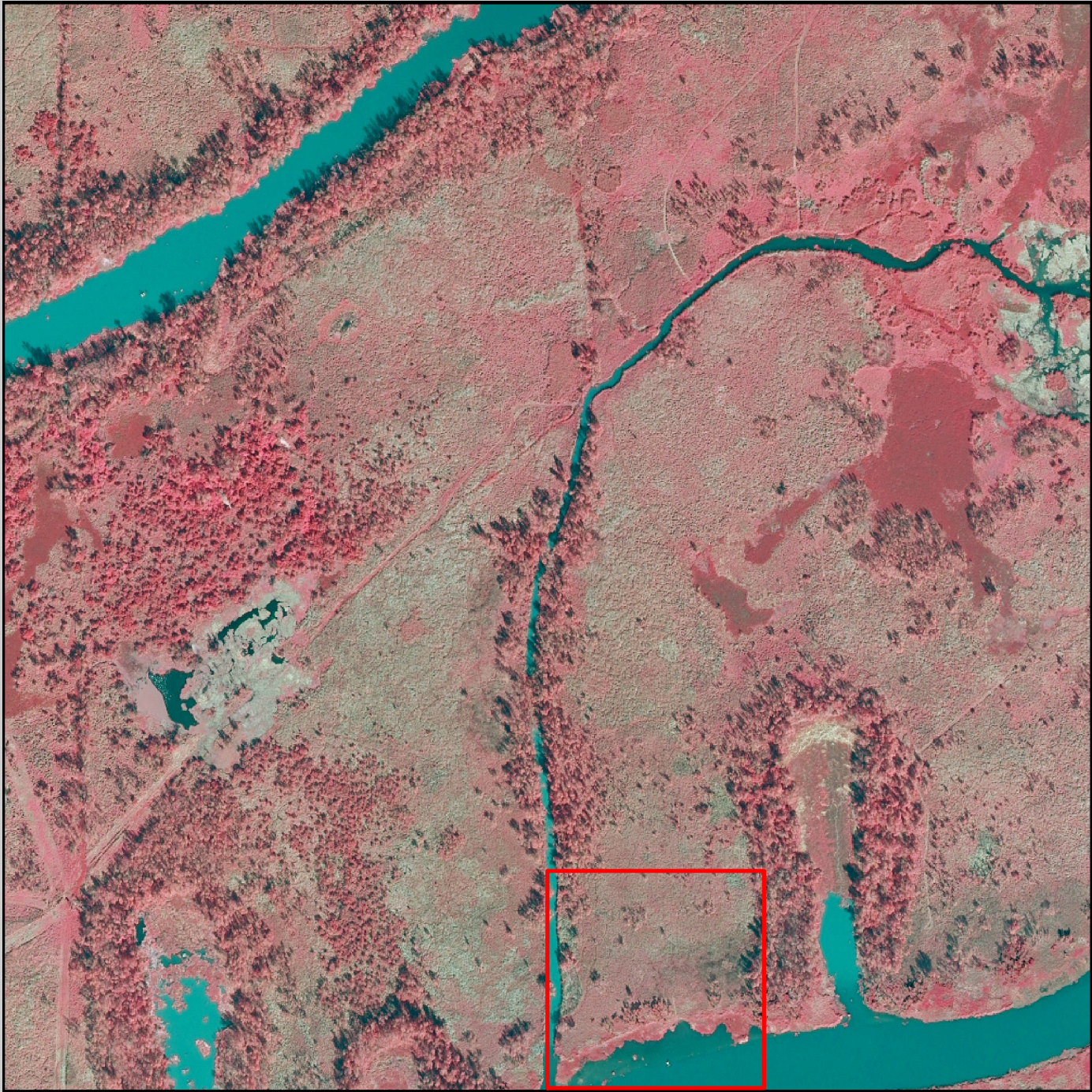


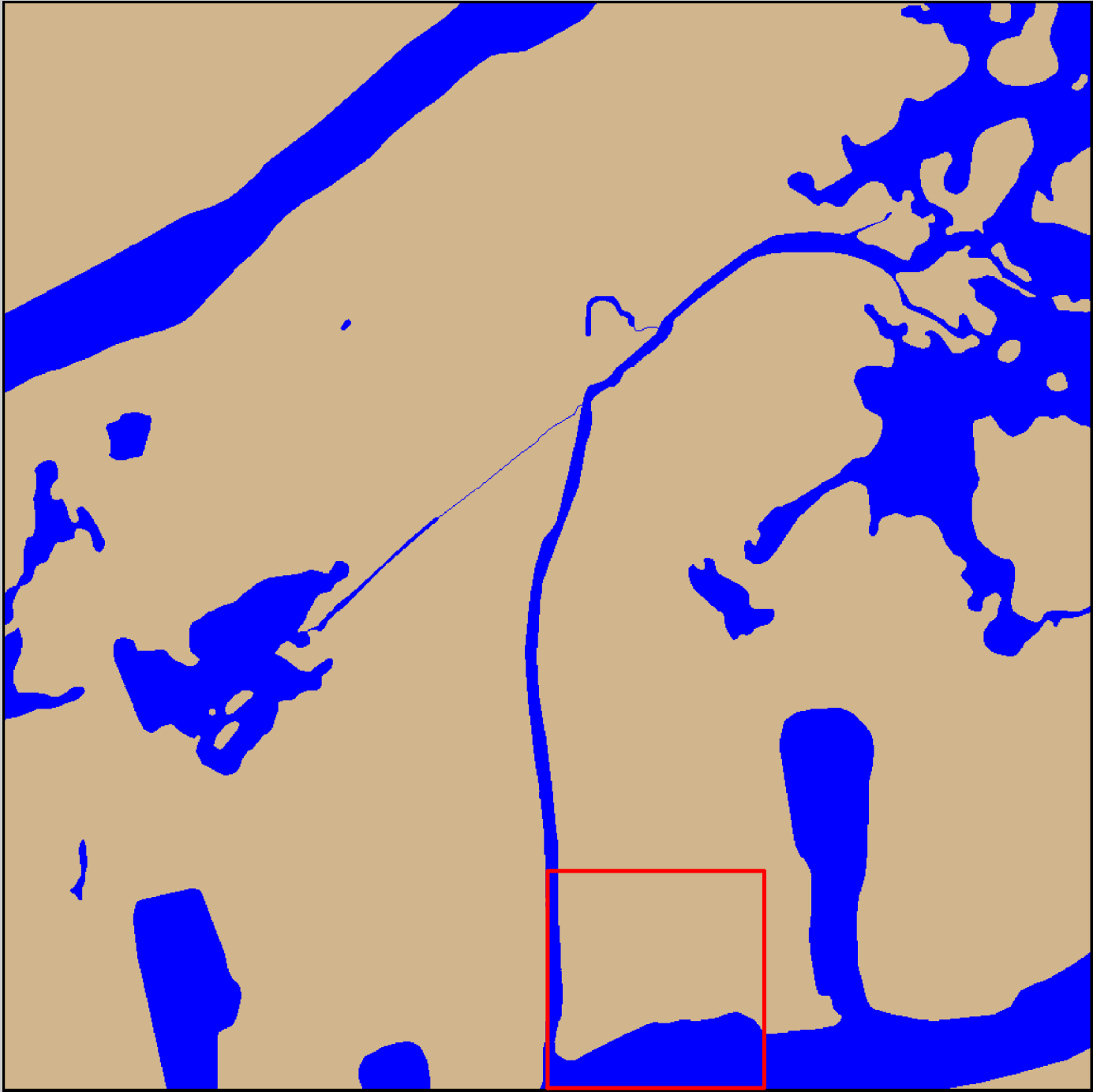
CRMS Site 465  
Coastwide Reference Monitoring System (CRMS)  
2012 Digital Image and Land-Water Classification



2012 Digital Image



2012 Land-Water Classification



Prepared by:  
U.S. Department of the Interior  
U.S. Geological Survey  
National Wetlands Research Center  
Lafayette, Louisiana  
Prepared for:  
Louisiana Coastal Protection and  
Restoration Authority  
Thibodaux Regional Office

Data Information:  
The 2012 land-water data were obtained from  
digital imagery (Z/I Imaging digital mapping  
camera) with 1-meter resolution, acquired  
October 2012. All areas characterized by  
emergent vegetation, upland, wetland  
forest, or scrub-shrub were classified as land,  
while open water, aquatic beds, and mudflats  
were classified as water.



Data  
Collection  
Area  
(DCA)

The DCA includes field  
samplings of water  
level, salinity, vegetation,  
surface elevation  
change, and soils.

2012 Land-Water Acreage Results	
Class	Study Area
Land	197
Water	51
Total	248

