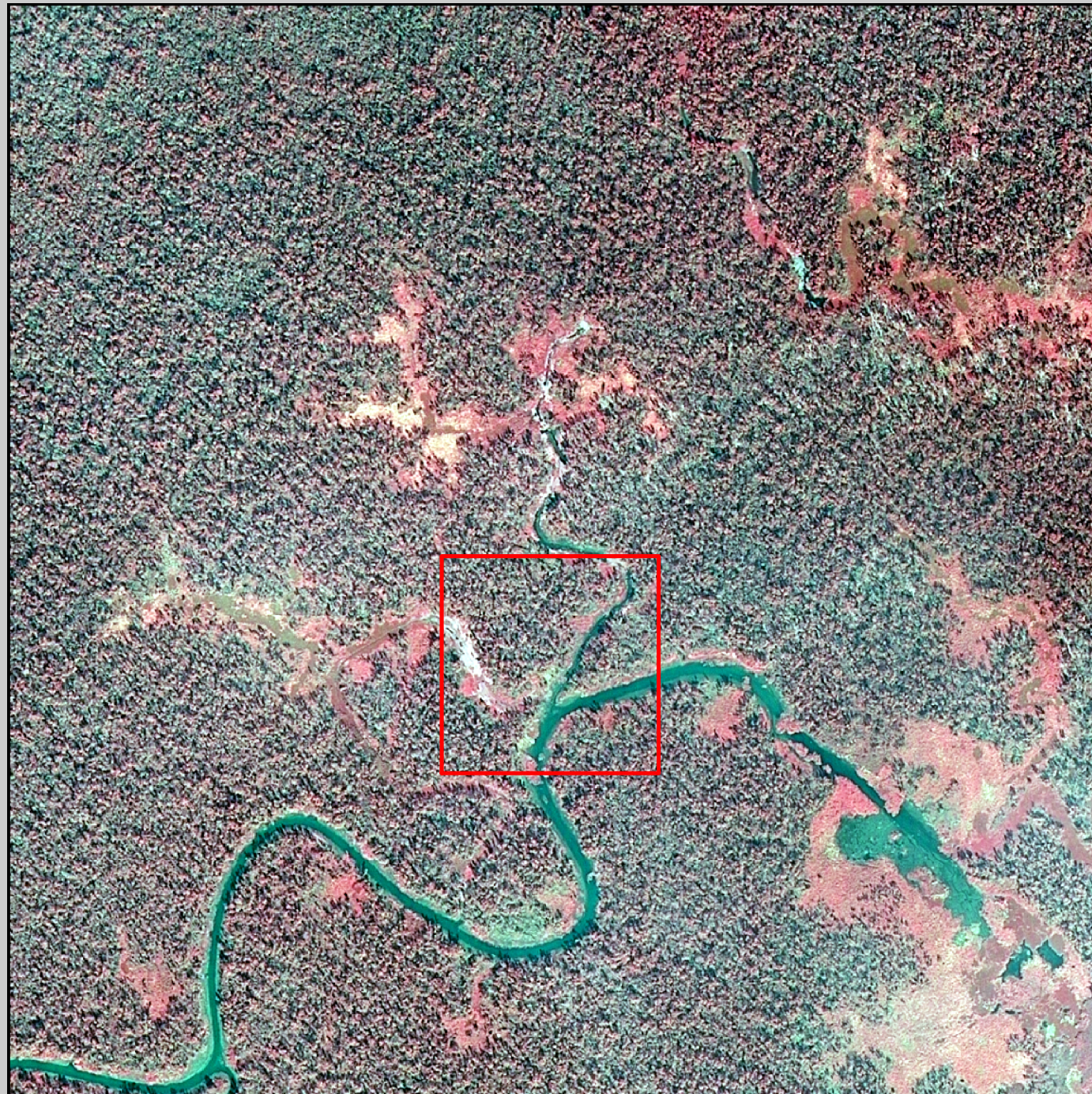
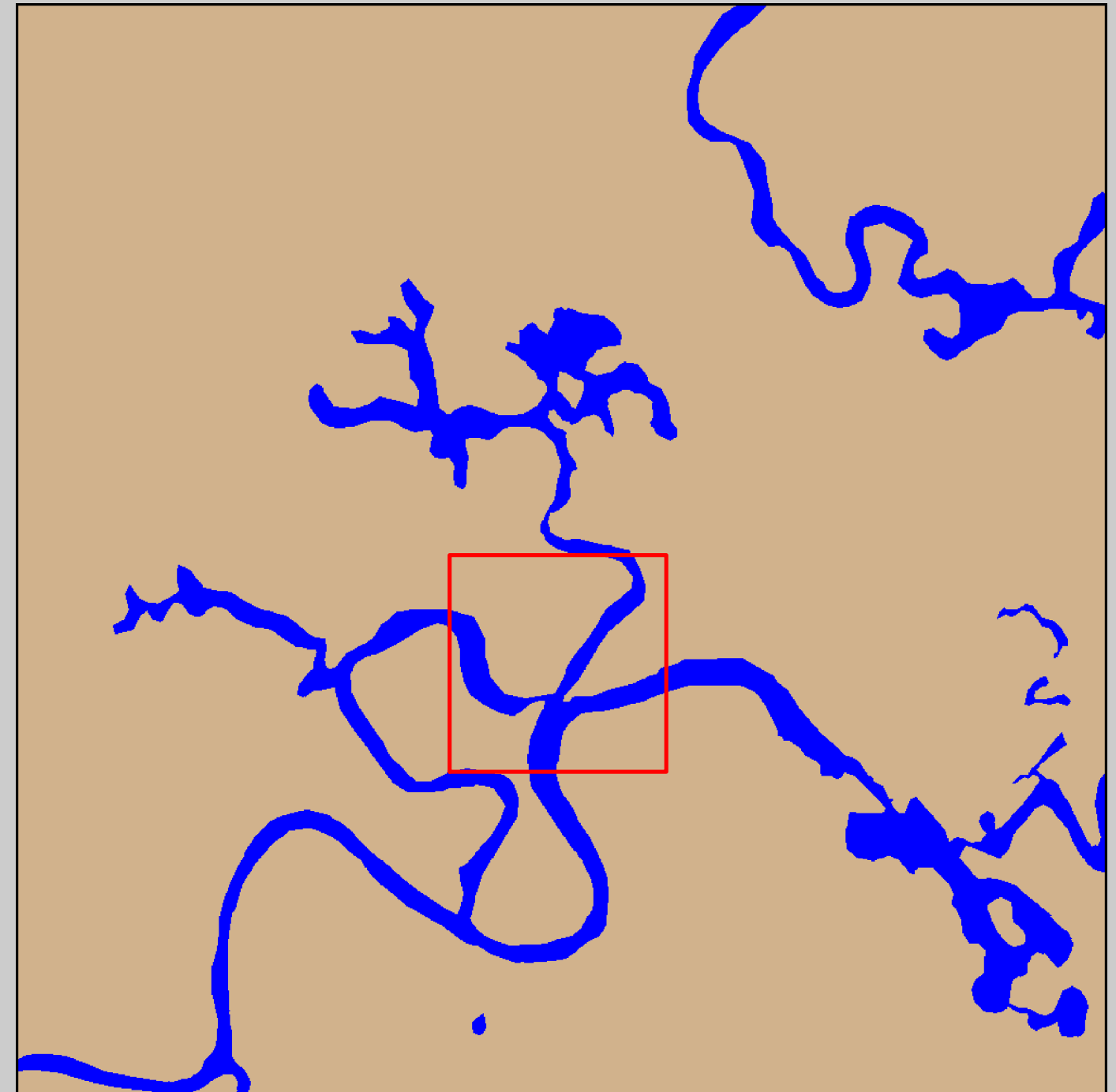


2008 Digital Image



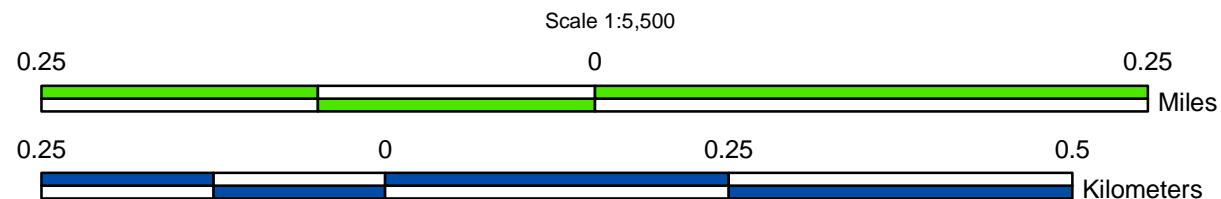
2008 Land-Water Classification



Because the work has not yet been approved for publication by the U.S. Geological Survey (USGS), it does not represent any official USGS finding or policy.

Prepared by:
 U.S. Department of the Interior
 U.S. Geological Survey
 National Wetlands Research Center
 Lafayette, Louisiana
 Prepared for:
 Louisiana Coastal Protection and
 Restoration Authority
 Thibodaux Field Office

Data Source:
 The land-water data were obtained from
 digital imagery (Z/I Imaging digital mapping
 camera) with 1-meter resolution, acquired
 October-November 2008. All areas
 characterized by emergent vegetation,
 upland, wetland forest, or scrub-shrub were
 classified as land, while open water, aquatic
 beds, and mudflats were classified as water.



Data
 Collection
 Area
 (DCA)

The DCA includes field
 samplings of water
 level, salinity, vegetation,
 surface elevation
 change, and soils.

2008 Land-Water Acreage Results

Class	Study Area
Land	225
Water	23
Total	248

Project Location



St. Mary Parish