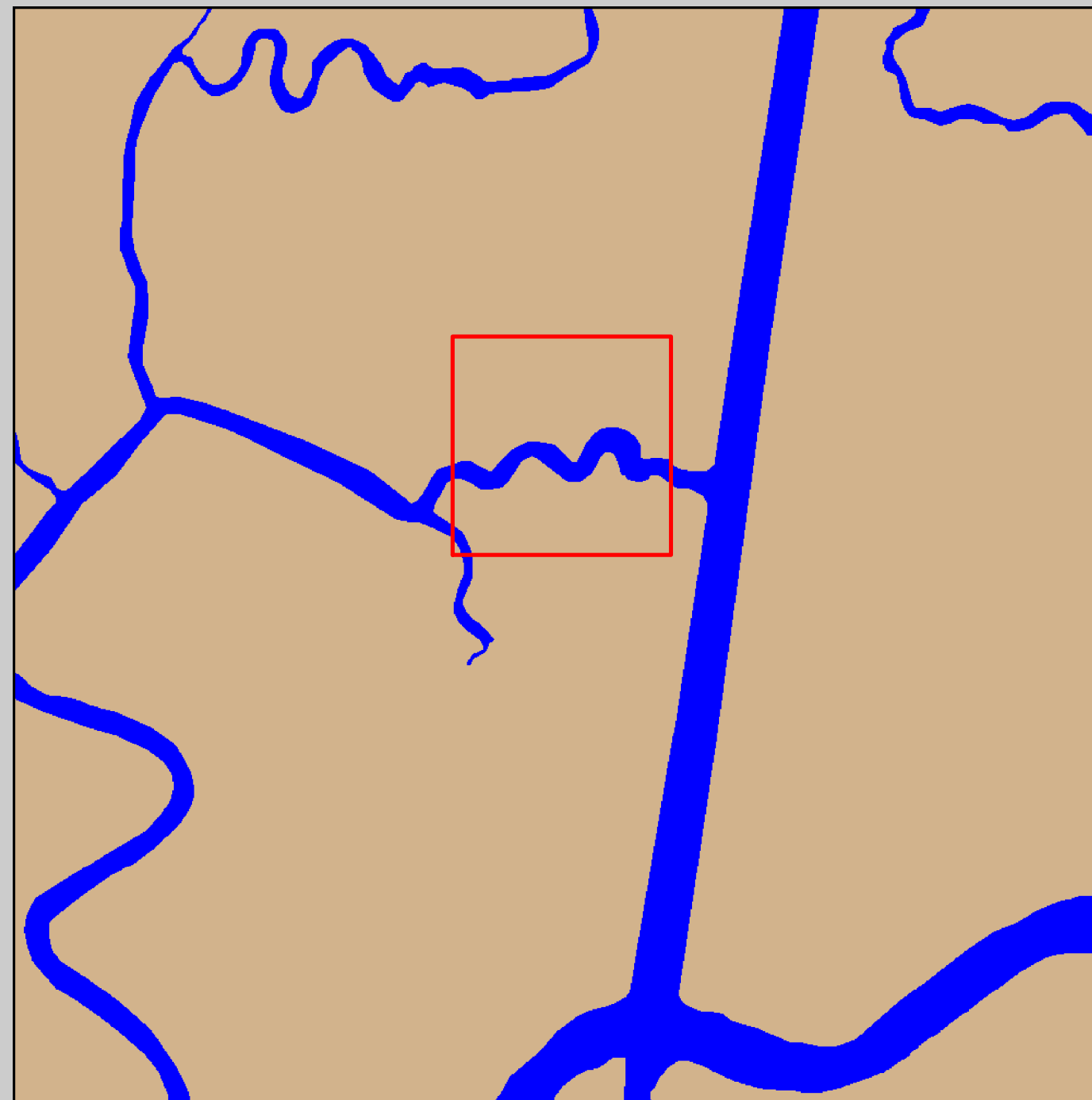
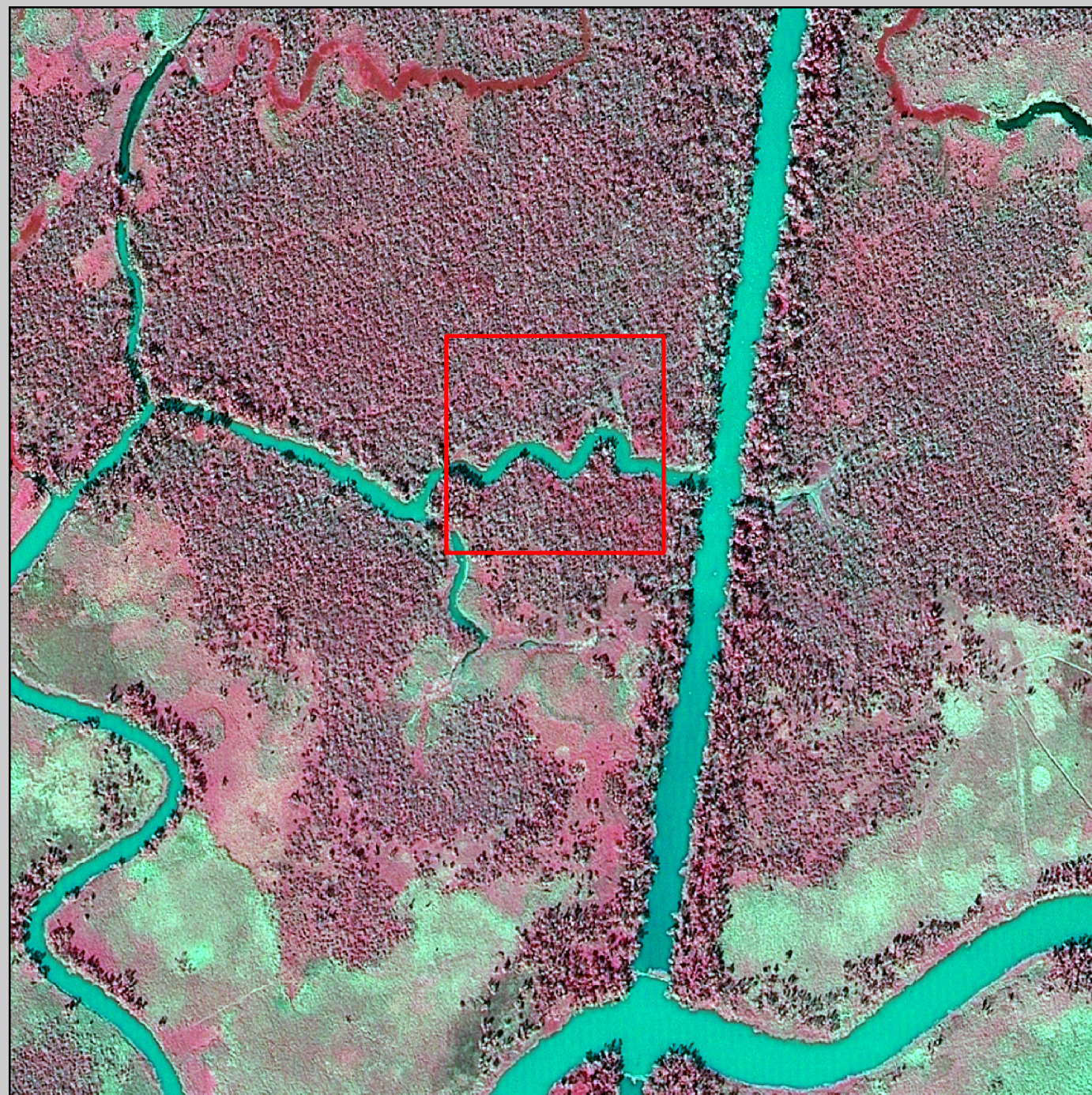


2008 Digital Image

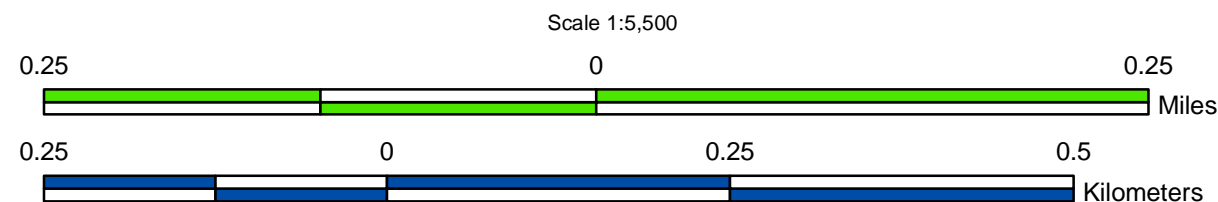
2008 Land-Water Classification



Because the work has not yet been approved for publication by the U.S. Geological Survey (USGS), it does not represent any official USGS finding or policy.

Prepared by:  
 U.S. Department of the Interior  
 U.S. Geological Survey  
 National Wetlands Research Center  
 Lafayette, Louisiana  
 Prepared for:  
 Louisiana Coastal Protection and  
 Restoration Authority  
 Thibodaux Field Office

Data Source:  
 The land-water data were obtained from  
 digital imagery (Z/I Imaging digital mapping  
 camera) with 1-meter resolution, acquired  
 October-November 2008. All areas  
 characterized by emergent vegetation,  
 upland, wetland forest, or scrub-shrub were  
 classified as land, while open water, aquatic  
 beds, and mudflats were classified as water.



**Data Collection Area (DCA)**

The DCA includes field samplings of water level, salinity, vegetation, surface elevation change, and soils.

**2008 Land-Water Acreage Results**

Class	Study Area
Land	221
Water	27
<b>Total</b>	<b>248</b>

Project Location

