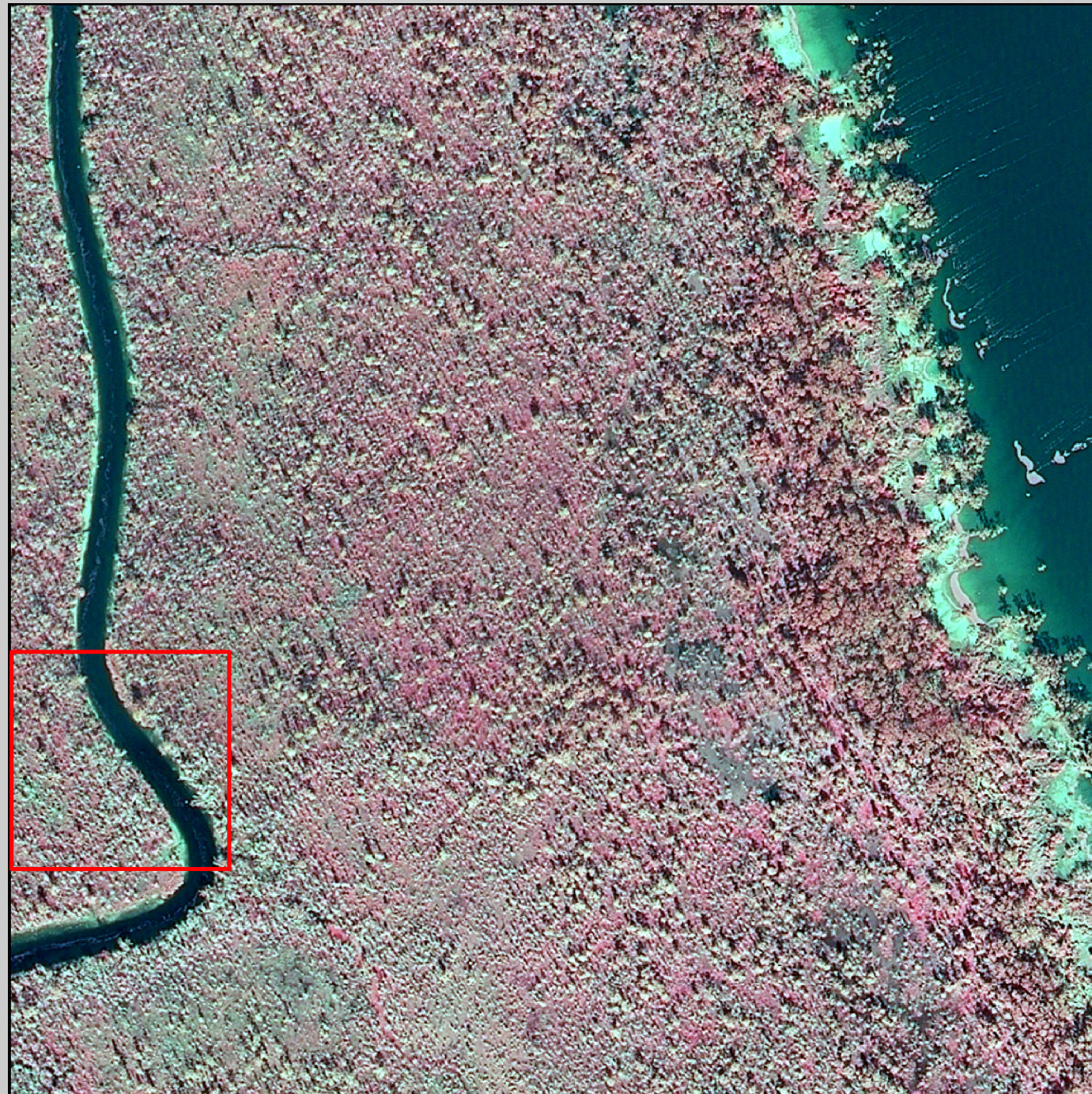


CRMS Site 5255

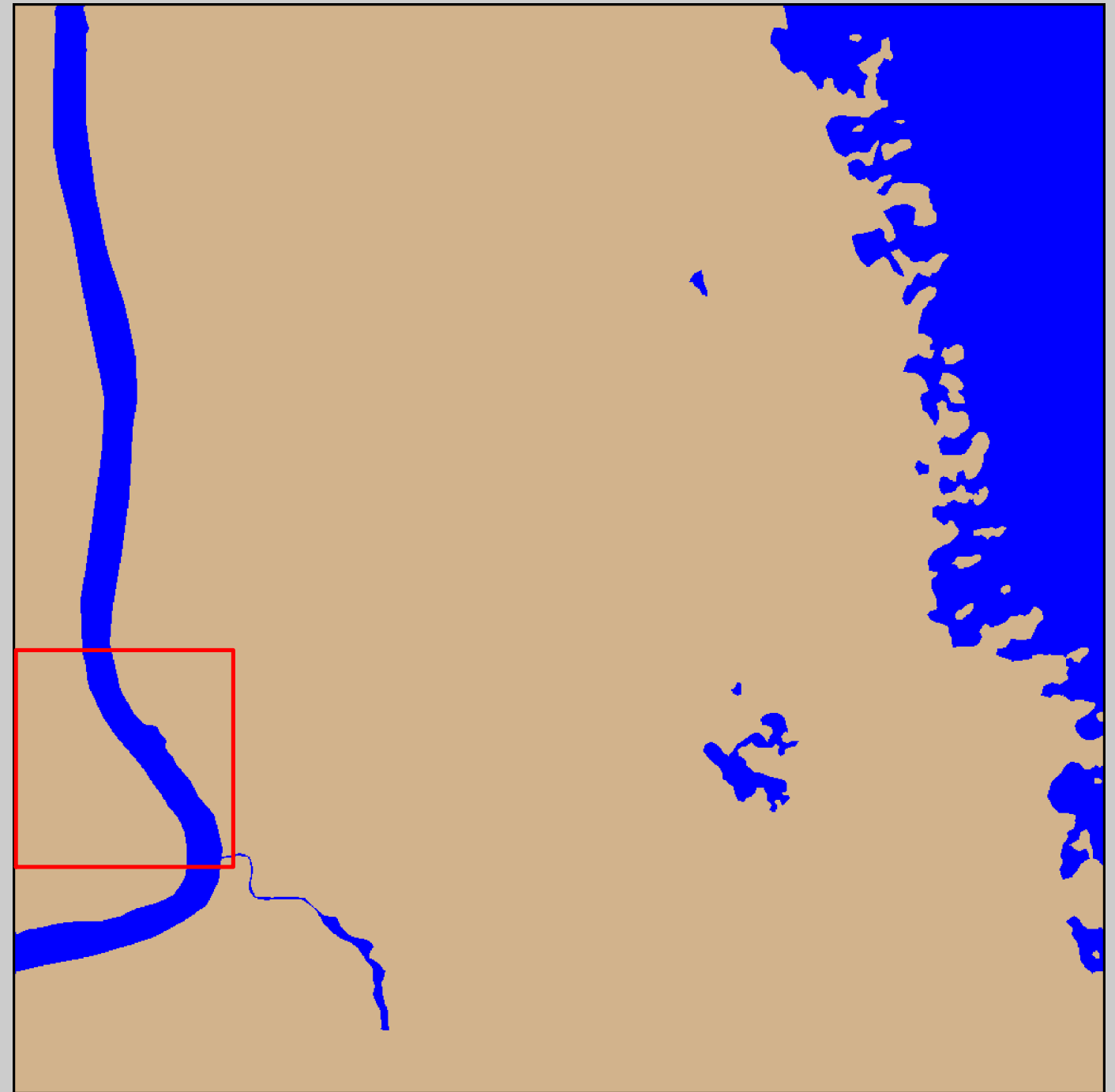
Coastwide Reference Monitoring System (CRMS)

2008 Digital Image and Land-Water Classification

2008 Digital Image



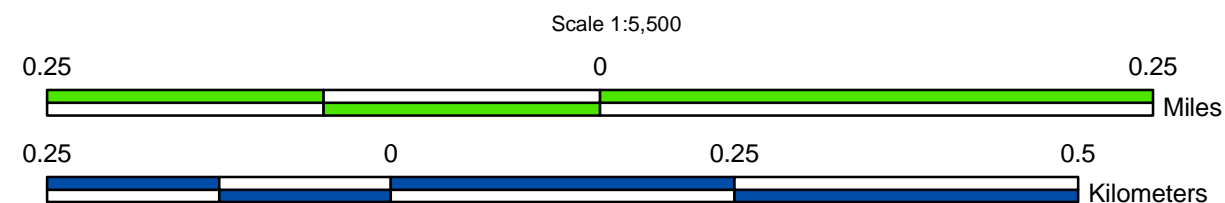
2008 Land-Water Classification



Because the work has not yet been approved for publication by the U.S. Geological Survey (USGS), it does not represent any official USGS finding or policy.

Prepared by:
U.S. Department of the Interior
U.S. Geological Survey
National Wetlands Research Center
Lafayette, Louisiana
Prepared for:
Louisiana Coastal Protection and
Restoration Authority
New Orleans Field Office

Data Source:
The land-water data were obtained from
digital imagery (Z/I Imaging digital mapping
camera) with 1-meter resolution, acquired
October-November 2008. All areas
characterized by emergent vegetation,
upland, wetland forest, or scrub-shrub were
classified as land, while open water, aquatic
beds, and mudflats were classified as water.



Data
Collection
Area
(DCA)

The DCA includes field
samplings of water
level, salinity, vegetation,
surface elevation
change, and soils.

2008 Land-Water Acreage Results

Class	Study Area
Land	211
Water	37
Total	248

Project Location

