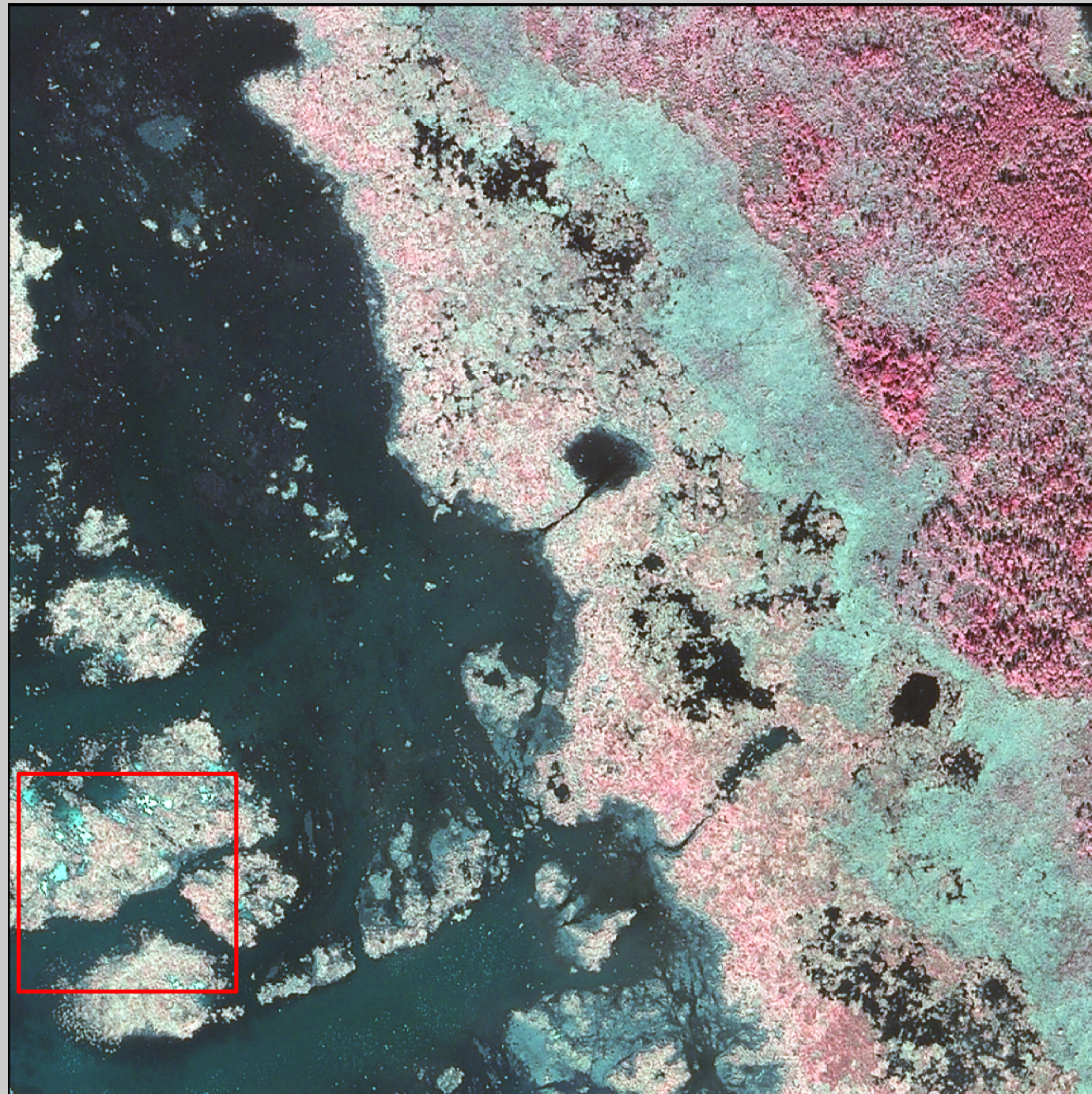
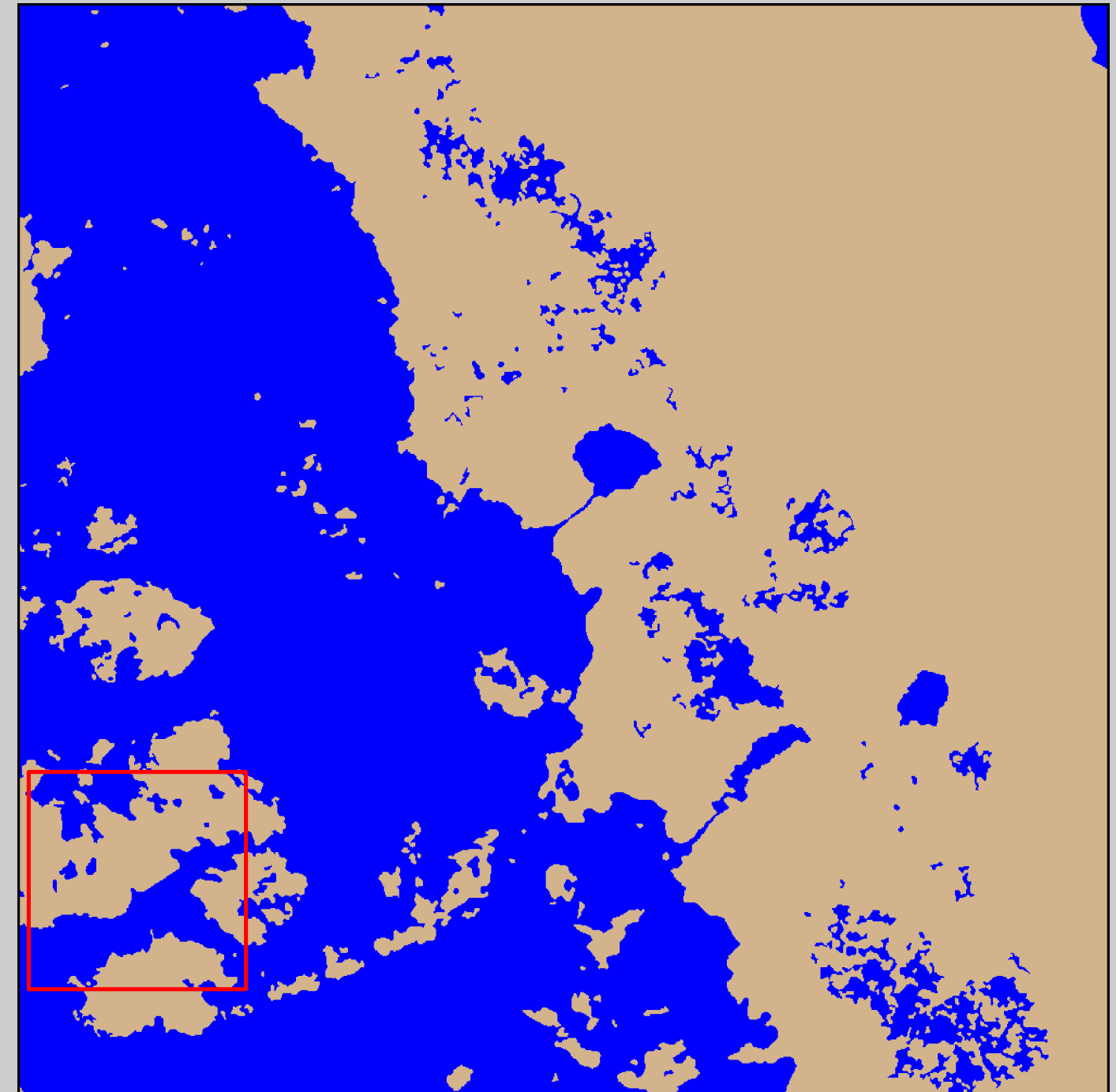


2008 Digital Image



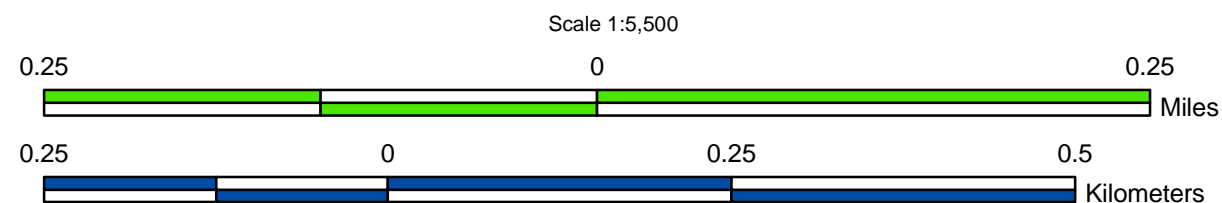
2008 Land-Water Classification



Because the work has not yet been approved for publication by the U.S. Geological Survey (USGS), it does not represent any official USGS finding or policy.

Prepared by:  
 U.S. Department of the Interior  
 U.S. Geological Survey  
 National Wetlands Research Center  
 Lafayette, Louisiana  
 Prepared for:  
 Louisiana Coastal Protection and  
 Restoration Authority  
 New Orleans Field Office

Data Source:  
 The land-water data were obtained from  
 digital imagery (Z/I Imaging digital mapping  
 camera) with 1-meter resolution, acquired  
 October-November 2008. All areas  
 characterized by emergent vegetation,  
 upland, wetland forest, or scrub-shrub were  
 classified as land, while open water, aquatic  
 beds, and mudflats were classified as water.



Data  
 Collection  
 Area  
 (DCA)

The DCA includes field  
 samplings of water  
 level, salinity, vegetation,  
 surface elevation  
 change, and soils.

2008 Land-Water Acreage Results

Class	Study Area
Land	142
Water	106
<b>Total</b>	<b>248</b>

Project Location



St. Tammany Parish