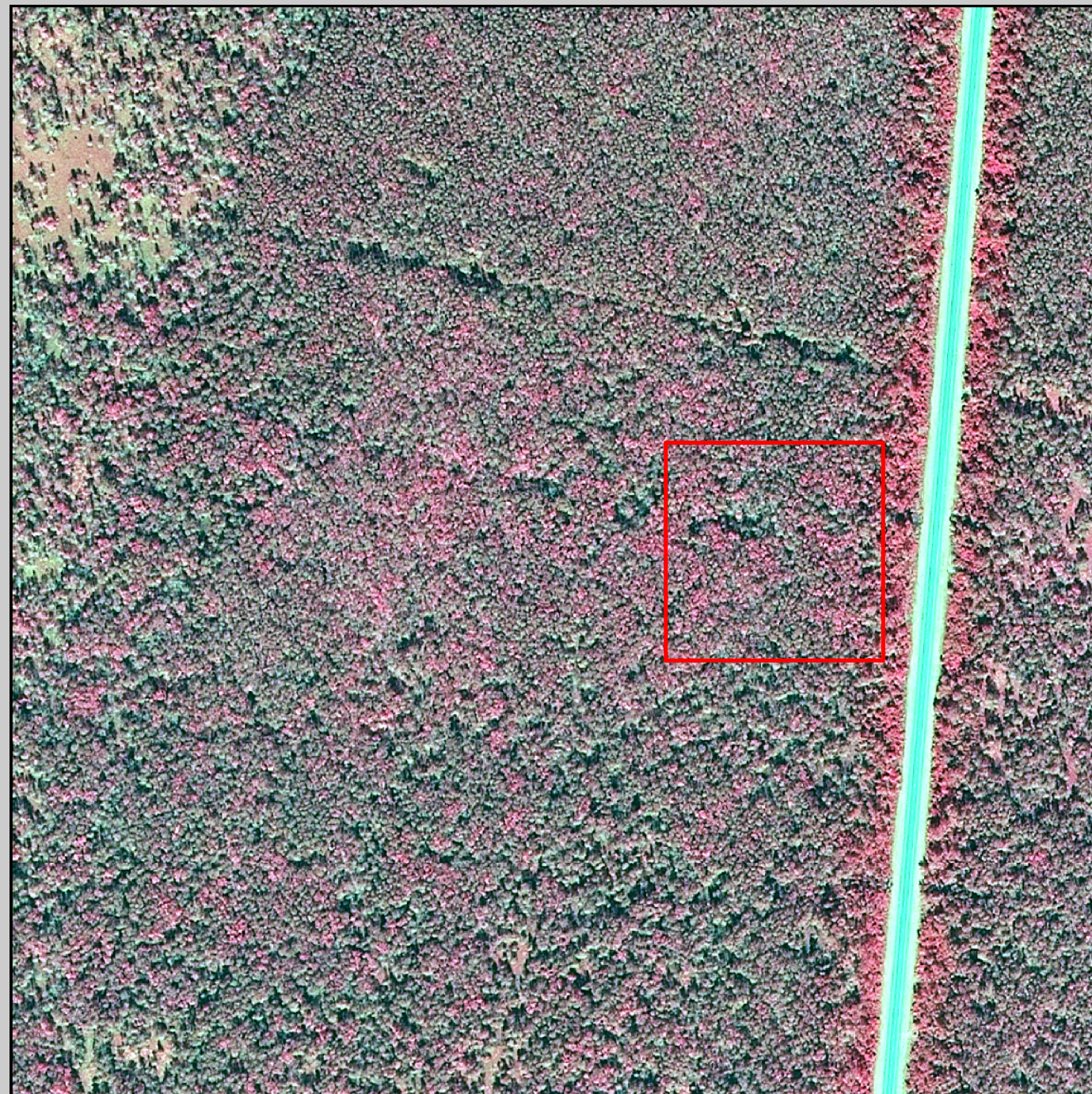
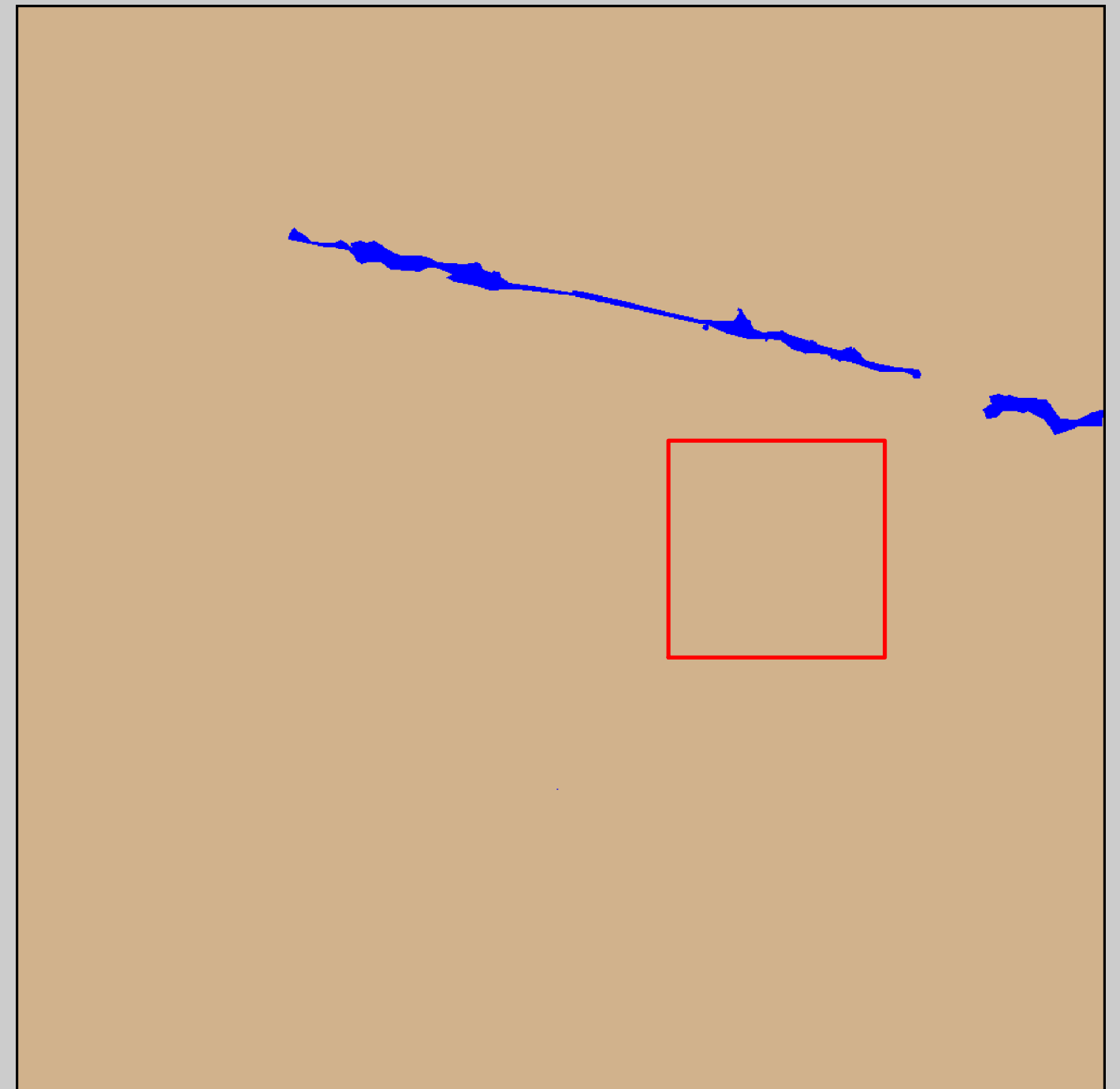


2008 Digital Image



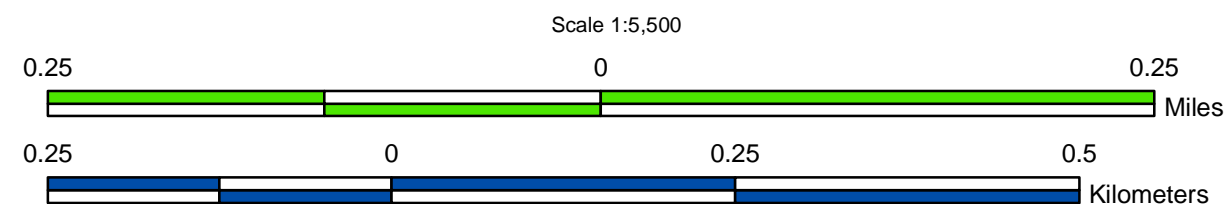
2008 Land-Water Classification



Because the work has not yet been approved for publication by the U.S. Geological Survey (USGS), it does not represent any official USGS finding or policy.

Prepared by:  
U.S. Department of the Interior  
U.S. Geological Survey  
National Wetlands Research Center  
Lafayette, Louisiana  
Prepared for:  
Louisiana Coastal Protection and  
Restoration Authority  
New Orleans Field Office

Data Source:  
The land-water data were obtained from  
digital imagery (Z/I Imaging digital mapping  
camera) with 1-meter resolution, acquired  
October-November 2008. All areas  
characterized by emergent vegetation,  
upland, wetland forest, or scrub-shrub  
were classified as land, while open water, aquatic  
beds, and mudflats were classified as water.



Data  
Collection  
Area  
(DCA)

The DCA includes field  
samplings of water  
level, salinity, vegetation,  
surface elevation  
change, and soils.

2008 Land-Water Acreage Results

Class	Study Area
Land	246
Water	2
<b>Total</b>	<b>248</b>

Project Location

