



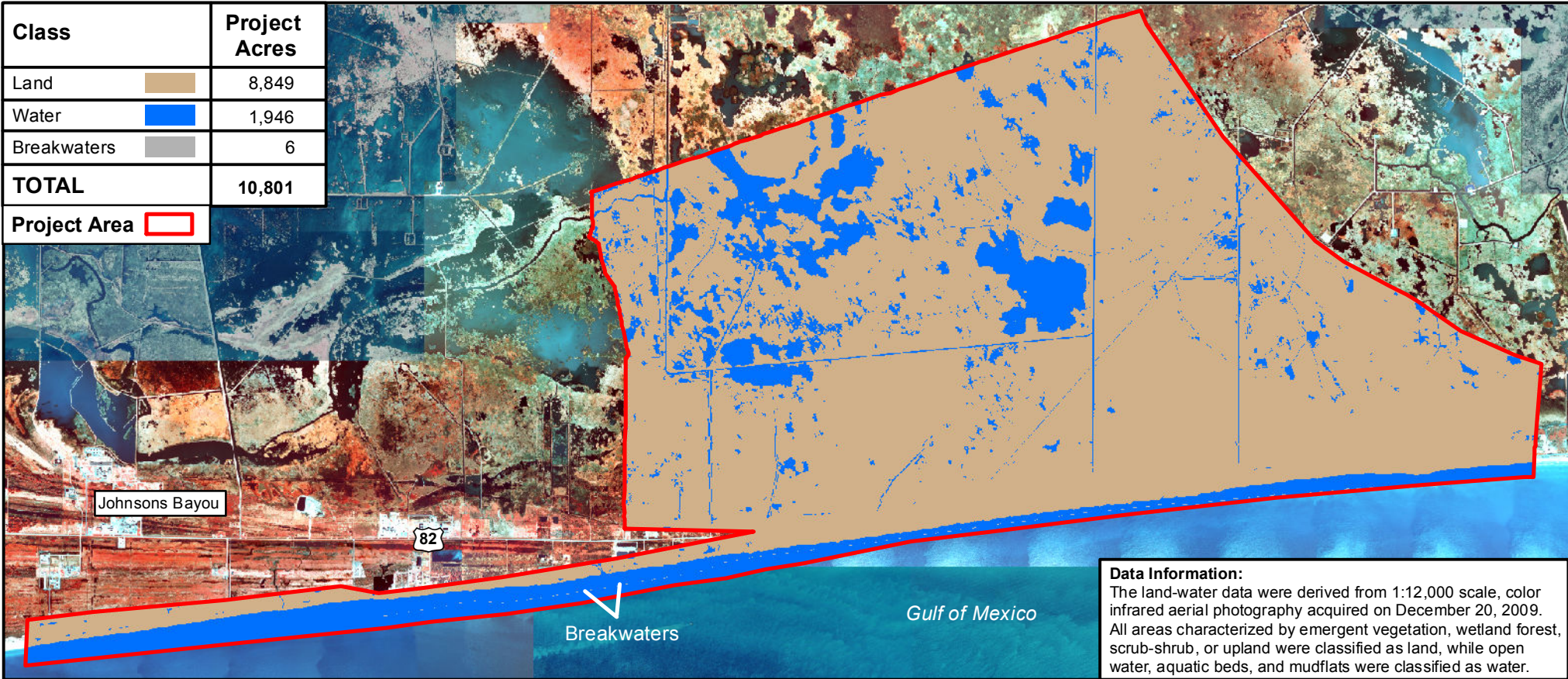
Holly Beach Sand Management (CS-31)

Coastal Wetlands Planning, Protection, and Restoration Act

2009 Land-Water Classification



Class		Project Acres
Land		8,849
Water		1,946
Breakwaters		6
TOTAL		10,801
Project Area		

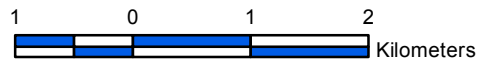


Data Information:
The land-water data were derived from 1:12,000 scale, color infrared aerial photography acquired on December 20, 2009. All areas characterized by emergent vegetation, wetland forest, scrub-shrub, or upland were classified as land, while open water, aquatic beds, and mudflats were classified as water.

Prepared by:
U.S. Department of the Interior
U.S. Geological Survey
National Wetlands Research Center
Lafayette, Louisiana
and
Louisiana Coastal Protection and Restoration Authority
Lafayette Field Office



Scale = 1:65,000



Project Location



Federal Sponsor:
U.S. Department of Agriculture
Natural Resources Conservation Service



Map ID: USGS-NWRC-2011-02-0011