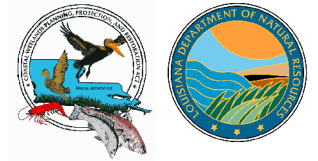


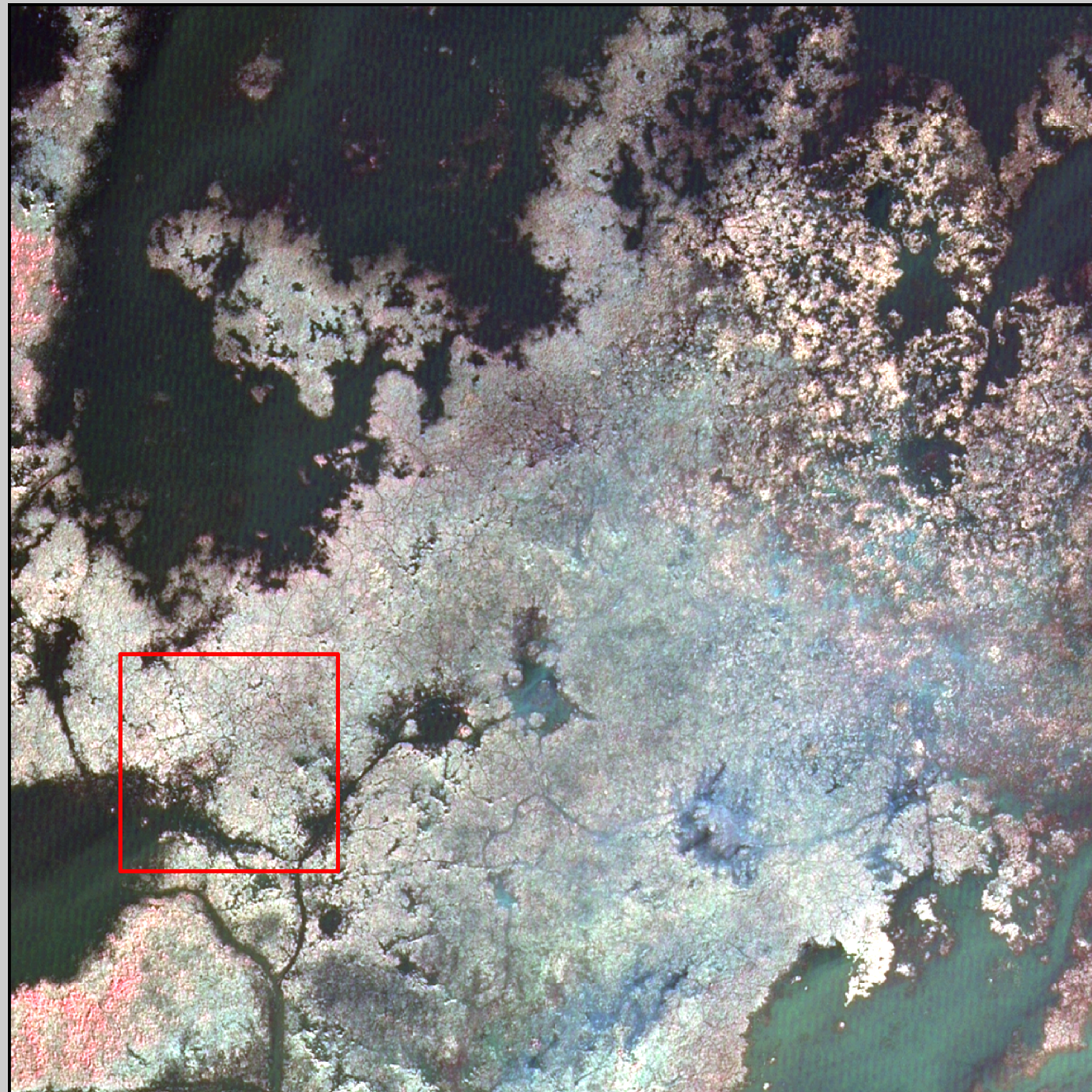
# CRMS Site 570

## Coastwide Reference Monitoring System (CRMS)

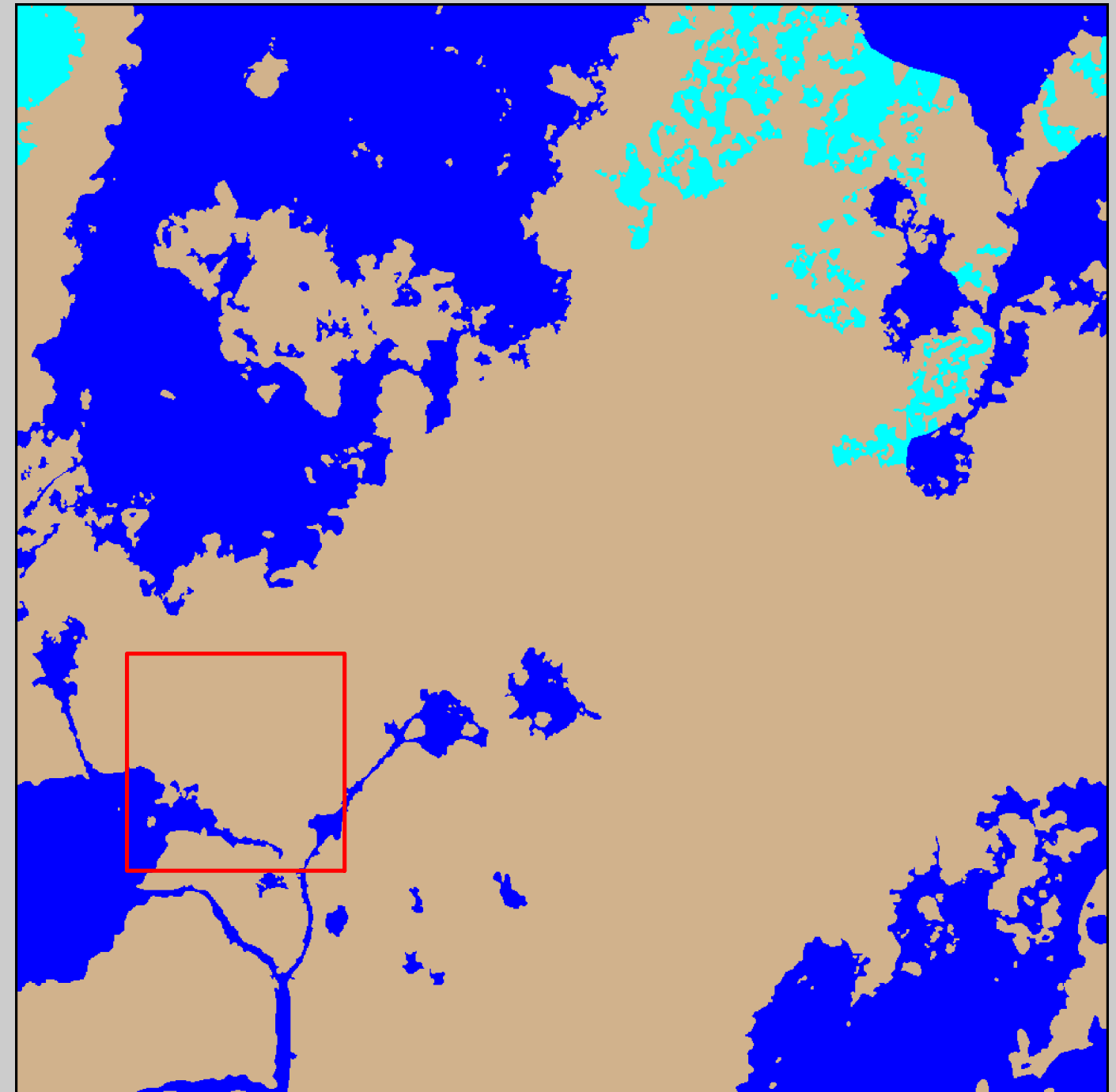
### 2005 Digital Image and Land-Water Classification



2005 Digital Image

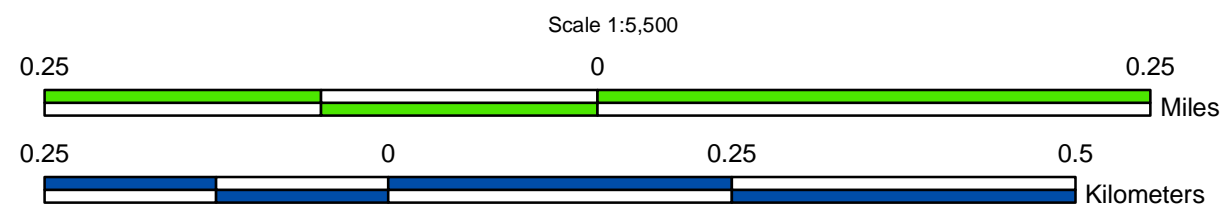


2005 Land-Water Classification



Prepared by:  
U.S. Department of the Interior  
U.S. Geological Survey  
National Wetlands Research Center  
Lafayette, Louisiana  
Prepared for:  
Louisiana Department of Natural Resources  
Coastal Restoration Division  
Lafayette Field Office

Data Source:  
The land-water data were obtained from digital imagery (Z/I Imaging digital mapping camera) with 1-meter resolution, acquired October-November 2005. All areas characterized by emergent vegetation, upland, wetland forest, or scrub-shrub were classified as land, while open water, aquatic beds, and mudflats were classified as water.



Data  
Collection  
Area  
(DCA)

The DCA includes field samplings of water level, salinity, vegetation, surface elevation change, and soils.

#### 2005 Land-Water Acreage Results

Class	Study Area
Land	167
Water	73
Flooded Land	8
<b>Total</b>	<b>248</b>

#### Project Location

