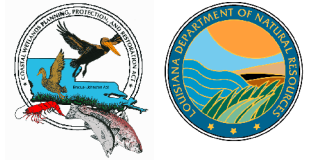


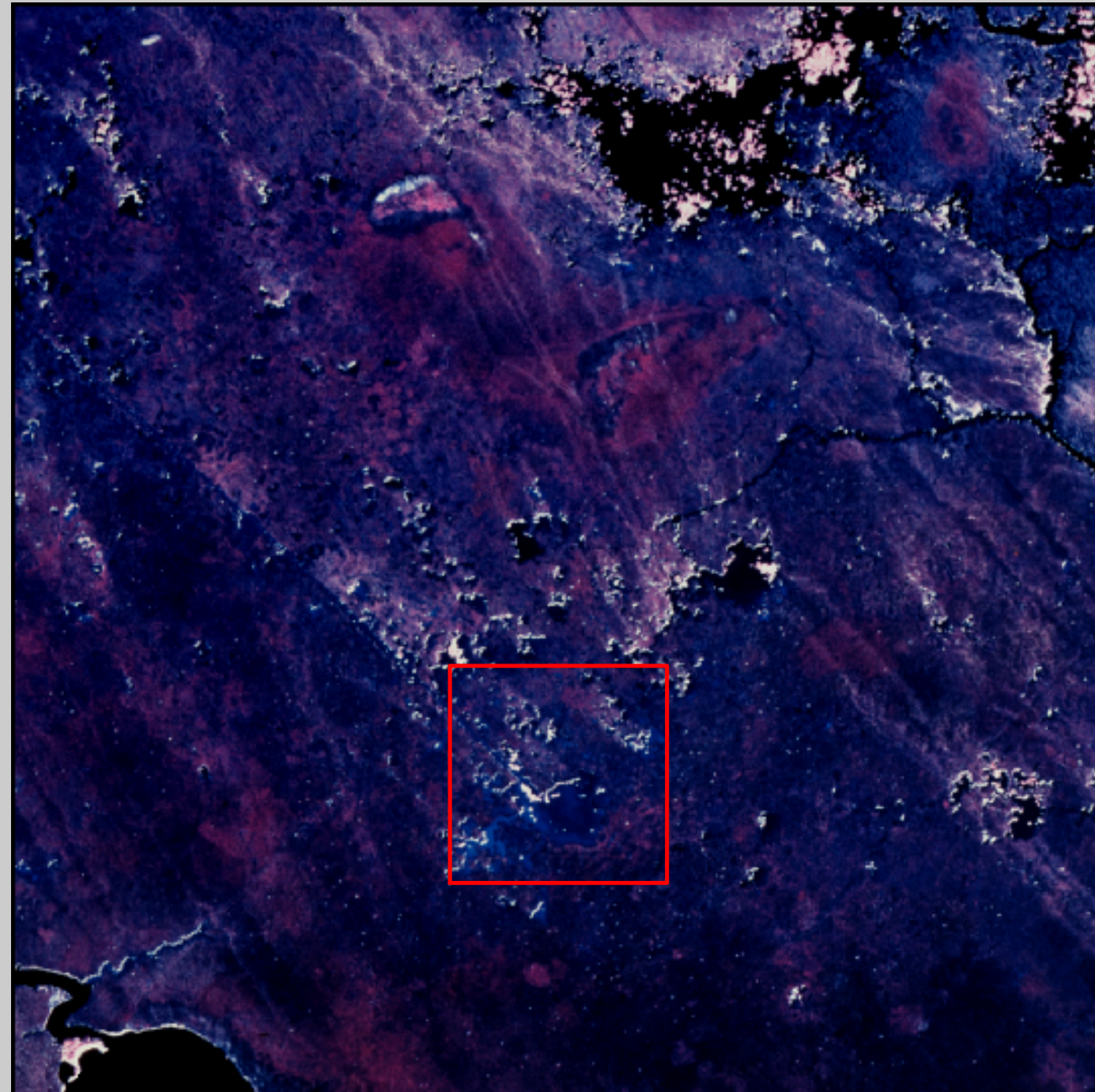
# CRMS Site 2166

## Coastwide Reference Monitoring System (CRMS)

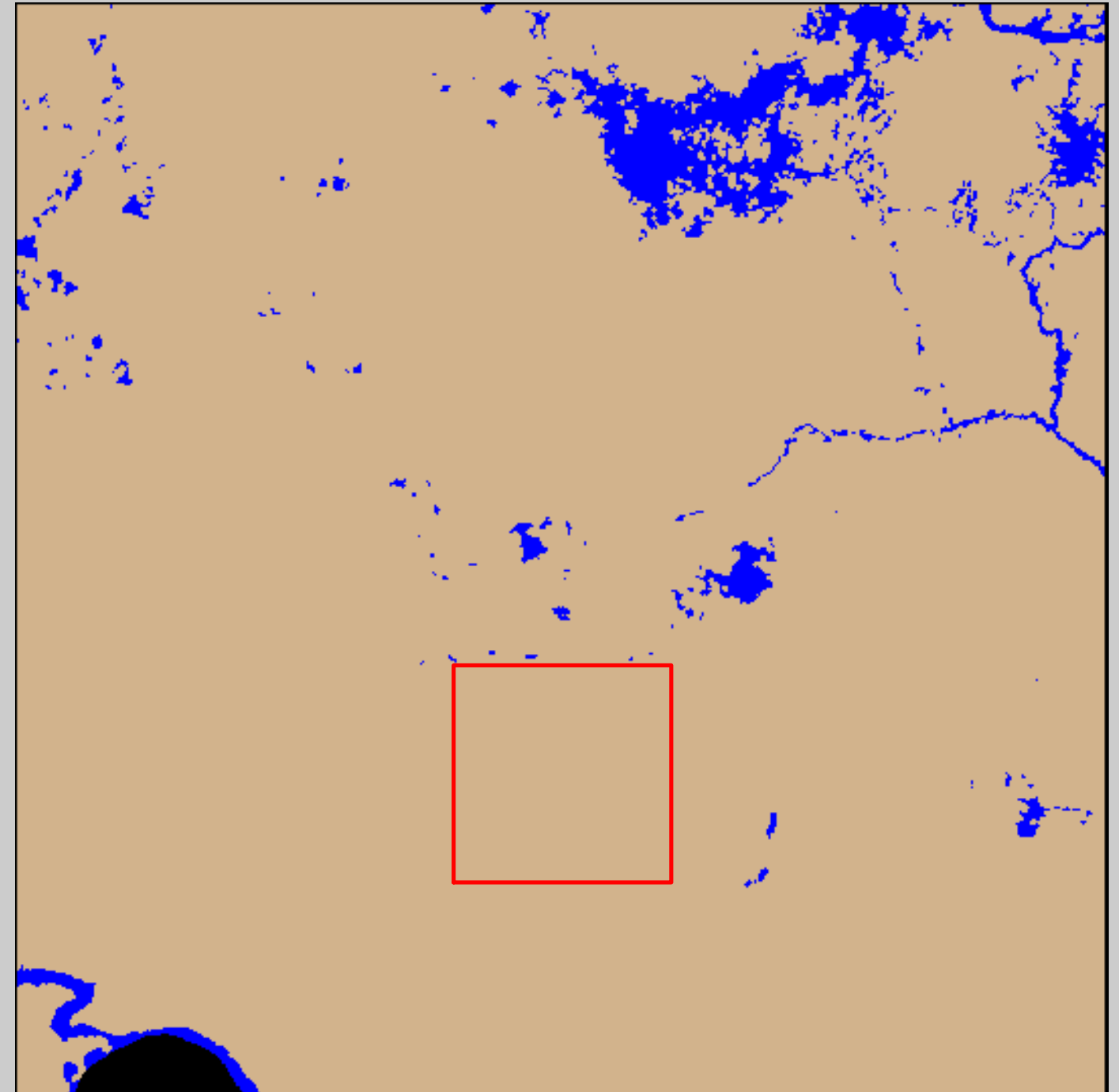
### 2000 Photomosaic and Land-Water Analysis



2000 Photomosaic

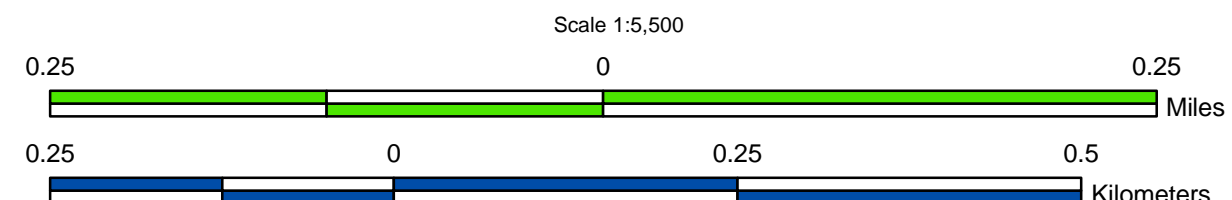


2000 Land-Water Analysis



Prepared by:  
U.S. Department of the Interior  
U.S. Geological Survey  
National Wetlands Research Center  
Lafayette, Louisiana  
Prepared for:  
Louisiana Department of Natural Resources  
Coastal Restoration Division  
Lafayette Field Office

Data Source:  
The land-water data were obtained from color infrared aerial photography acquired November 27, 2000 at 1:24,000 scale. All areas characterized by emergent vegetation, upland, wetland forest, or scrub-shrub were classified as land, while open water, aquatic beds, and mudflats were classified as water.



Data  
Collection  
Area  
(DCA)

The DCA includes field samplings of water level, salinity, vegetation, surface elevation change, and soils.

**2000 Land-Water Acreage Results**

Class	Study Area
Land	237
Water	11
<b>Total</b>	<b>248</b>

Project Location

