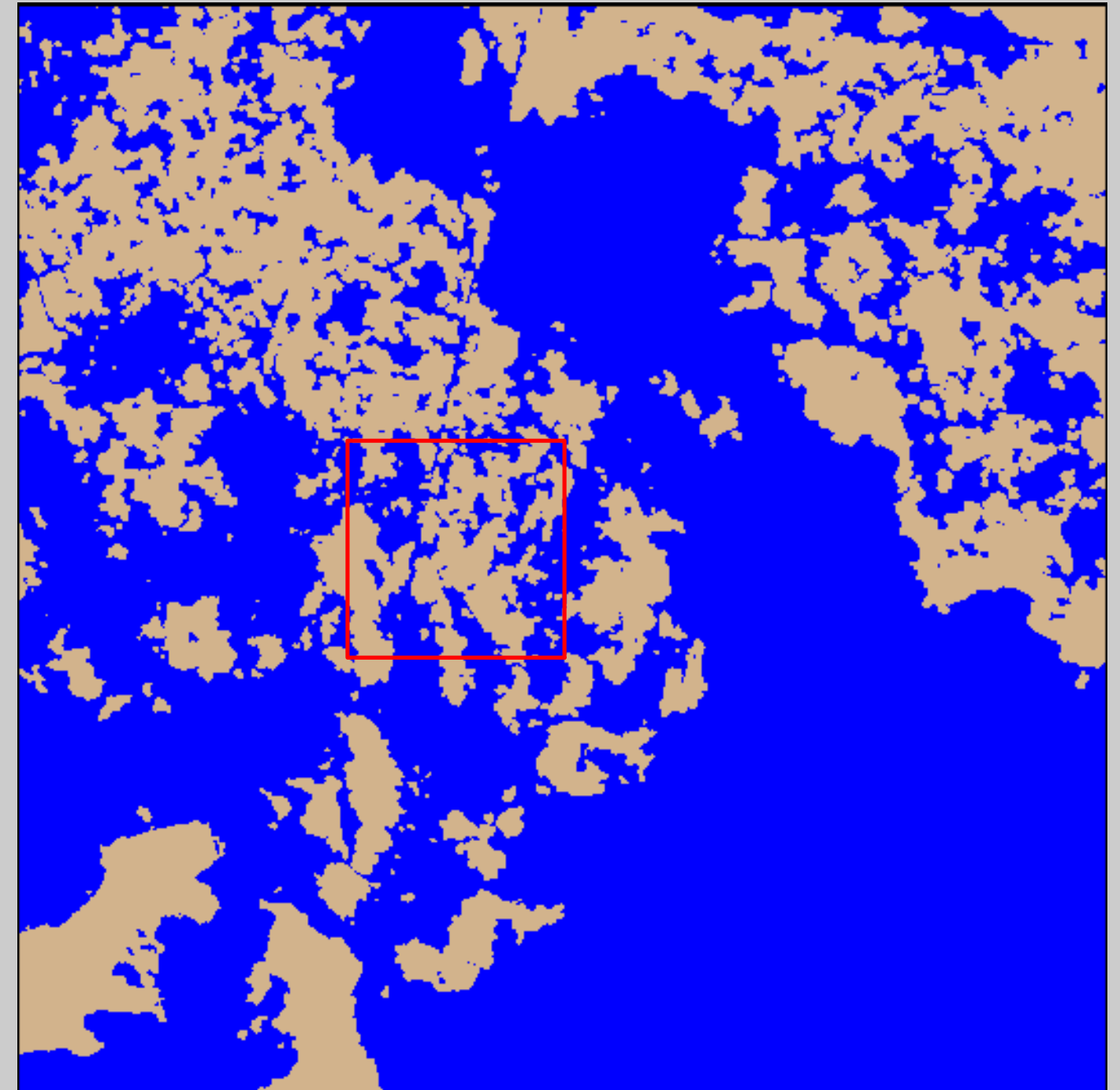
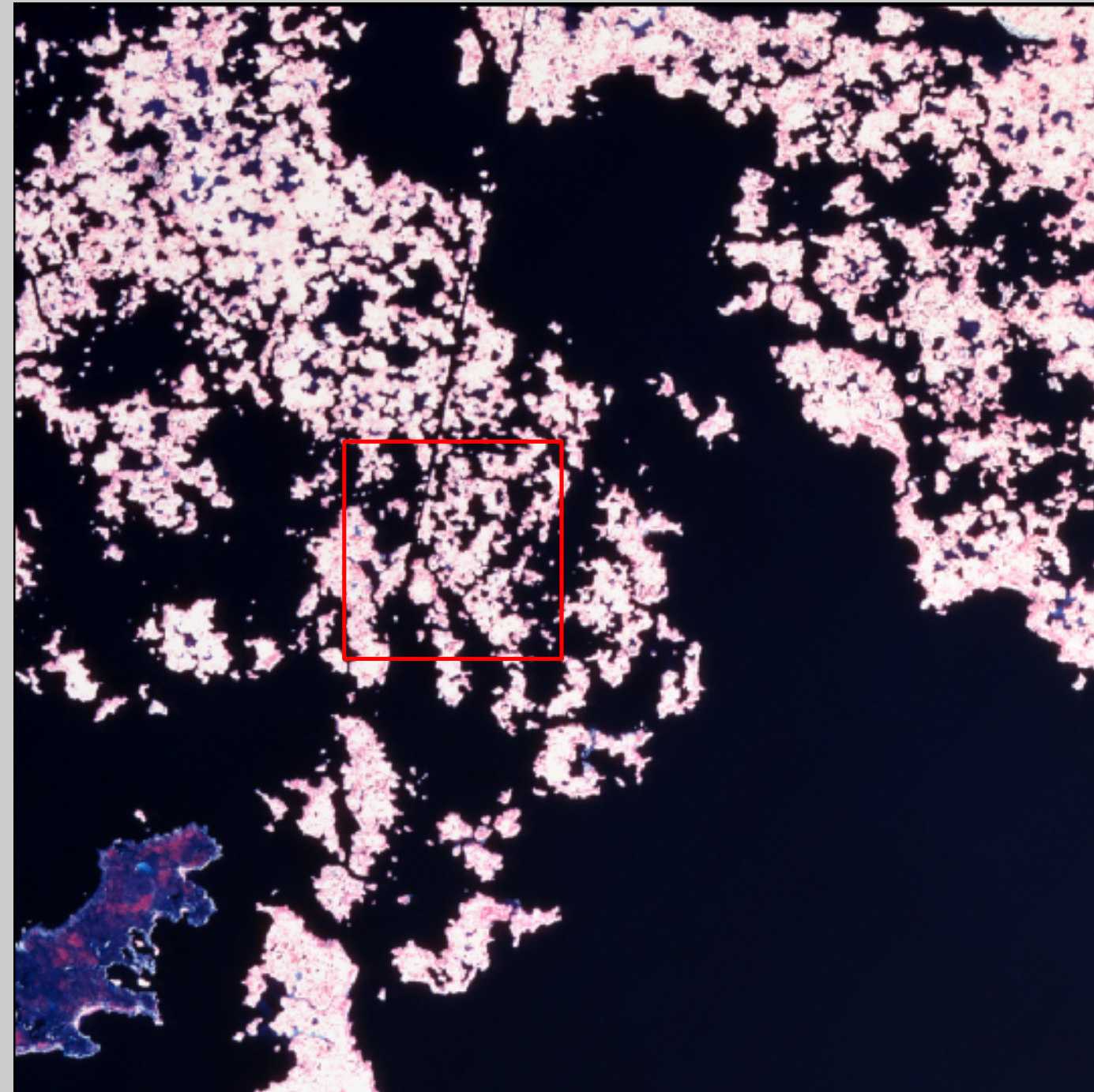


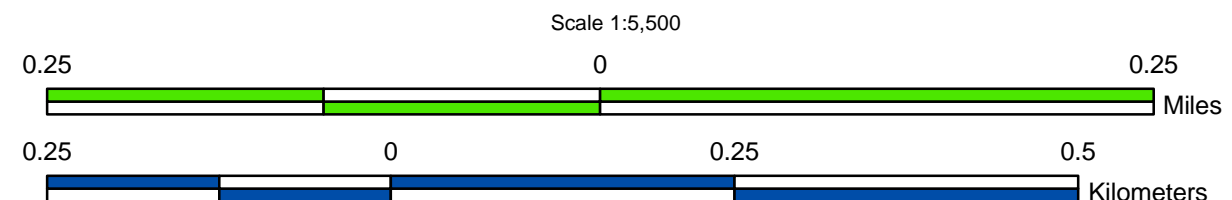
2000 Photomosaic

2000 Land-Water Analysis



Prepared by:  
 U.S. Department of the Interior  
 U.S. Geological Survey  
 National Wetlands Research Center  
 Lafayette, Louisiana  
 Prepared for:  
 Louisiana Department of Natural Resources  
 Coastal Restoration Division  
 Lafayette Field Office

Data Source:  
 The land-water data were obtained from color infrared aerial photography acquired November 27, 2000 at 1:24,000 scale. All areas characterized by emergent vegetation, upland, wetland forest, or scrub-shrub were classified as land, while open water, aquatic beds, and mudflats were classified as water.



Data Collection Area (DCA)

The DCA includes field samplings of water level, salinity, vegetation, surface elevation change, and soils.

2000 Land-Water Acreage Results

Class	Study Area
Land	84
Water	164
<b>Total</b>	<b>248</b>

Project Location

