

# CRMS Site 593

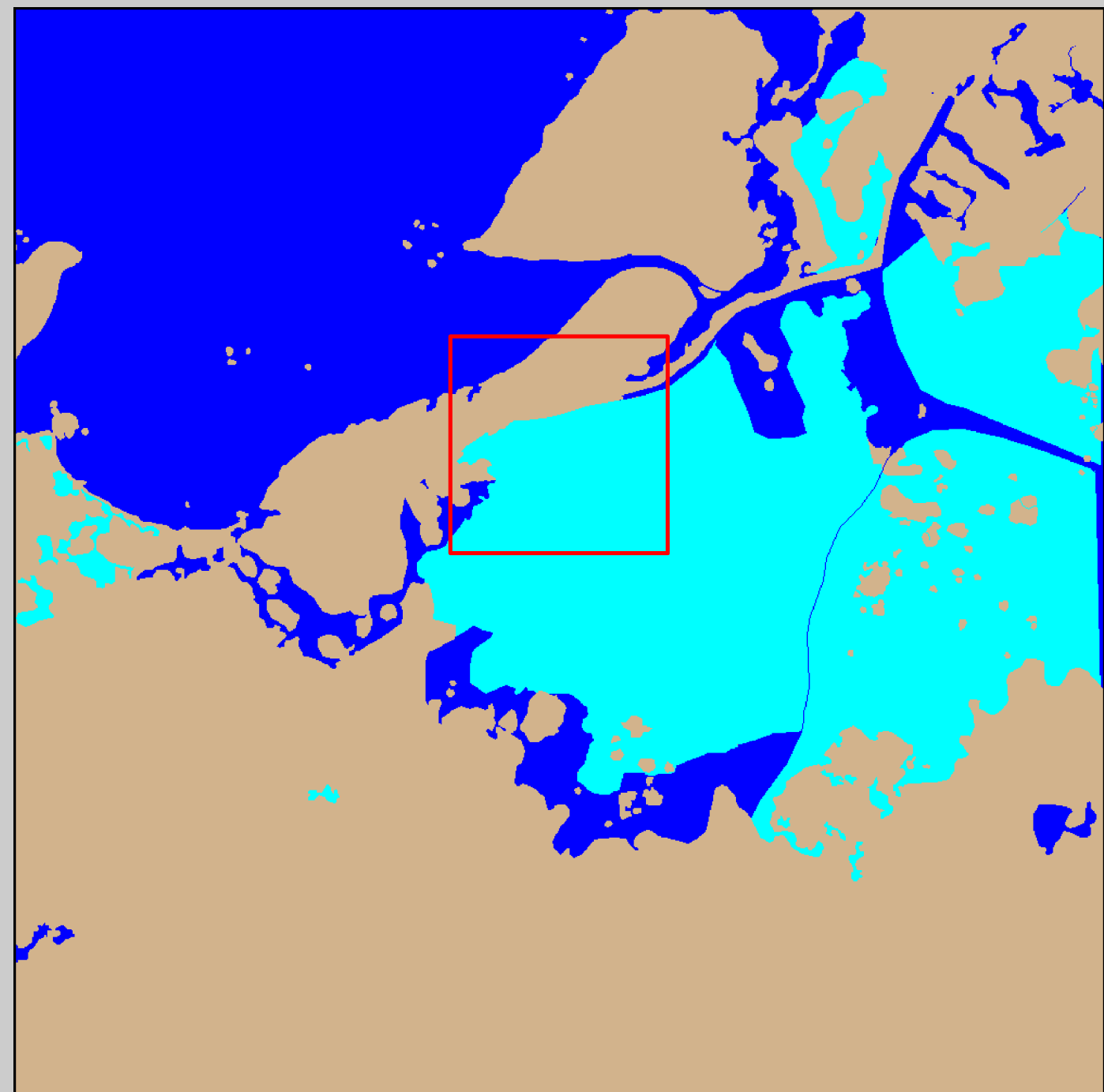
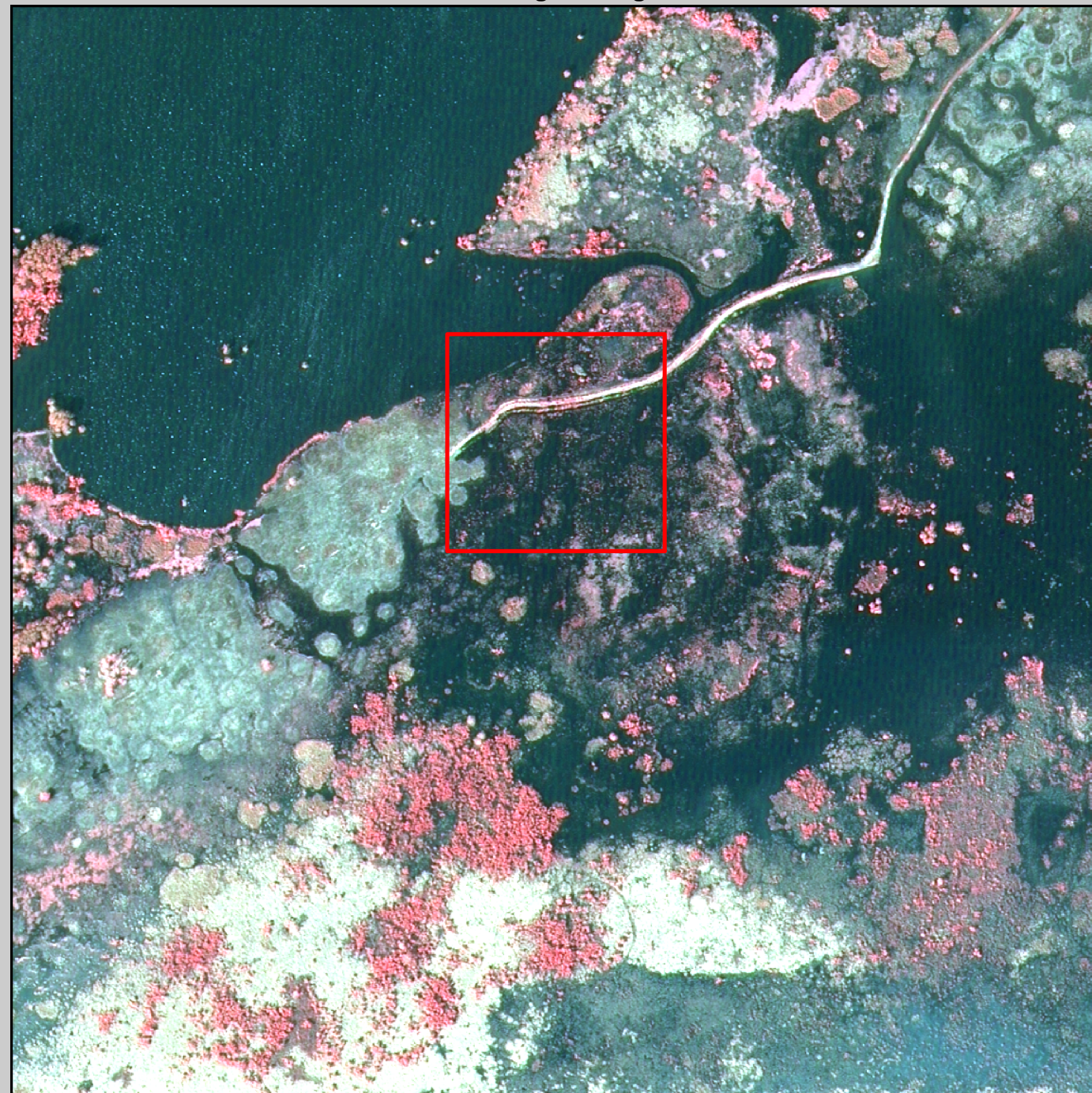
## Coastwide Reference Monitoring System (CRMS)

### 2005 Digital Image and Land-Water Classification



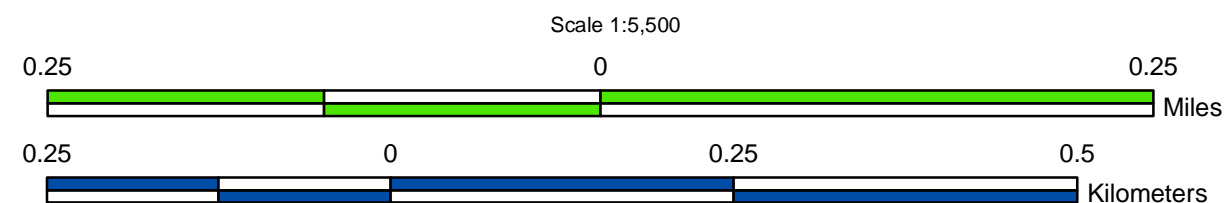
2005 Digital Image

2005 Land-Water Classification



Prepared by:  
U.S. Department of the Interior  
U.S. Geological Survey  
National Wetlands Research Center  
Lafayette, Louisiana  
Prepared for:  
Louisiana Department of Natural Resources  
Coastal Restoration Division  
Lafayette Field Office

Data Source:  
The land-water data were obtained from digital imagery (Z/I Imaging digital mapping camera) with 1-meter resolution, acquired October-November 2005. All areas characterized by emergent vegetation, upland, wetland forest, or scrub-shrub were classified as land, while open water, aquatic beds, and mudflats were classified as water.



Data Collection Area (DCA)

The DCA includes field samplings of water level, salinity, vegetation, surface elevation change, and soils.

#### 2005 Land-Water Acreage Results

Class	Study Area
Land	131
Water	66
Flooded Land	51
<b>Total</b>	<b>248</b>

Project Location



Cameron Parish

Map ID: USGS-NWRC 2007-02-0332